

# 0.57± ACRE LOT IN COLLINS COVINGTON COUNTY, MS



This 0.57± acre lot in Covington County offers easy street access, making it perfect for building a home. Conveniently located just off Highway 49 in Collins, MS, and near various restaurants, it's also an excellent opportunity for adding a rental property to your portfolio. Additional lots available.



COLBY  
**WATSON**

REALTOR®

Office: 601.898.2772

Cell: 601.668.8096

Colby@TomSmithLand.com



Expect More. Get More.

A Real Estate Expert You Can Trust

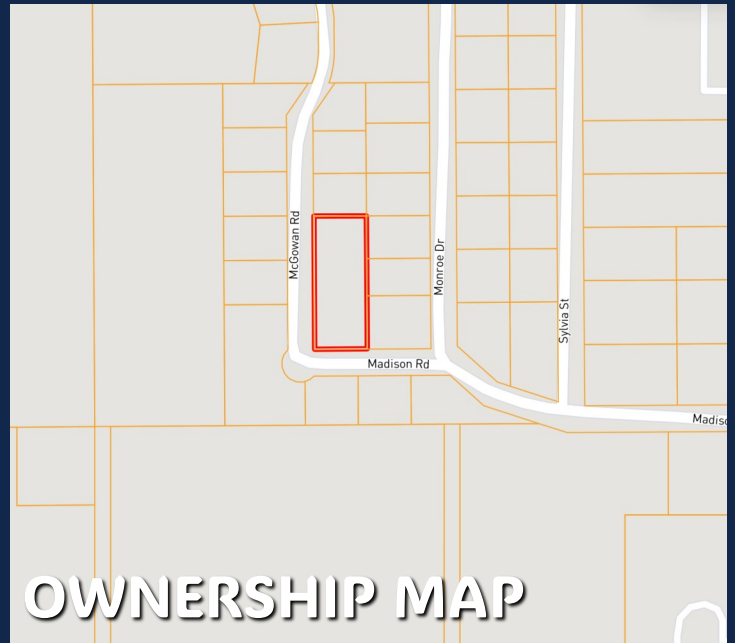
TomSmithLandandHomes.com

Information is believed to be accurate but not guaranteed.

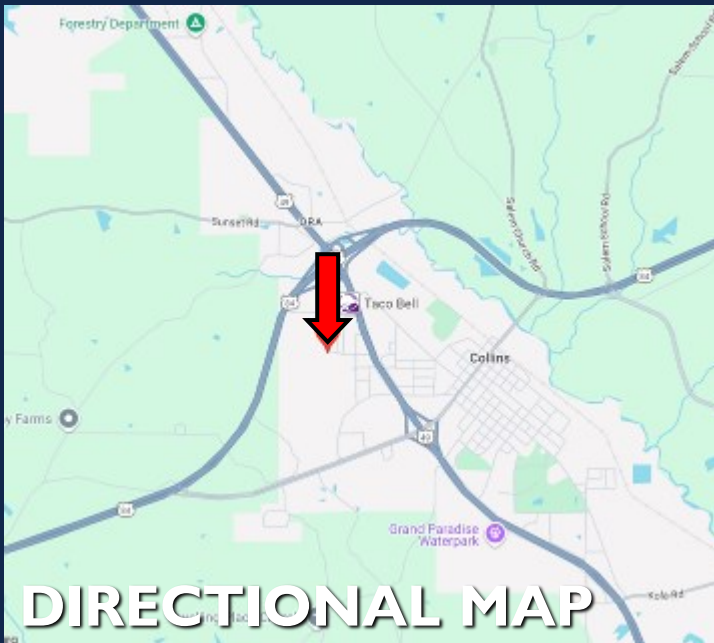




**AERIAL MAP**



**OWNERSHIP MAP**



**DIRECTIONAL MAP**

**Directions from the intersection Hwy 49 and Hwy 84 in Collins, MS:** Travel southeast on Hwy 49 for 0.5 miles Turn right onto Sylvania St. and travel 0.3 miles. Turn right onto Madison Rd. After .2 miles, the property will be on your right.

**[Google Map Link](#)**  
**[Click Here for the LandId](#)**  
**[Interactive Map Link](#)**



**COLBY  
WATSON**

REALTOR®

Office: 601.898.2772

Cell: 601.668.8096

Colby@TomSmithLand.com



Expect More. Get More.

**A Real Estate Expert You Can Trust**

TomSmithLandandHomes.com

Information is believed to be accurate but not guaranteed.

