

RENOVATED BRICK HOME IN COAHOMA COUNTY

260 Crestline Avenue, Clarksdale, MS 38614 | \$239,950



Welcome to this charming, newly renovated brick home at 260 Crestline Ave in Clarksdale, MS. With three bedrooms, 2.5 bathrooms, and 2,032 square feet of heated and cooled space, this Coahoma County property is designed for comfort and style. Inside, enjoy a beautifully updated kitchen with granite countertops, a cozy fireplace, and a vaulted ceiling in the living room that flows effortlessly from the kitchen. The home also features a new architectural roof, a privacy-fenced yard, and a spacious 22x30 shop with a 15x30 overhang that shelters an outdoor bar area. Just a short walk from Lee Academy, this inviting home is ready for you to make it your own.



**ANTHONY
STEEN**

REALTOR®

Office: 662.441.2500

Cell: 662.645.5151

Anthony@TomSmithLand.com



Expect More. Get More.

A Real Estate Expert You Can Trust

TomSmithLandandHomes.com

Information is believed to be accurate but not guaranteed.





A Real Estate Expert
You Can Trust!

ANTHONY STEEN
REALTOR®

O: 662.441.2500 C: 662.645.5151

Anthony@TomSmithLand.com

TomSmithLandandHomes.com

Tom Smith
LAND AND HOMES

Expect More. Get More.

2011-2024
BEST
REALTORS

Information is believed to be accurate but not guaranteed.



A Real Estate Expert
You Can Trust!

ANTHONY STEEN
REALTOR®
O: 662.441.2500 C: 662.645.5151
Anthony@TomSmithLand.com
TomSmithLandandHomes.com

Tom Smith
LAND AND HOMES
Expect More. Get More.

2011-2024
BEST
BROKERAGES

Information is believed to be accurate but not guaranteed.



A Real Estate Expert
You Can Trust!

ANTHONY STEEN
REALTOR®

O: 662.441.2500 C: 662.645.5151

Anthony@TomSmithLand.com

TomSmithLandandHomes.com

Tom Smith
LAND AND HOMES

Expect More. Get More.

2011-2024
BEST
REALTORS

Information is believed to be accurate but not guaranteed.



A Real Estate Expert
You Can Trust!

ANTHONY STEEN
REALTOR®

O: 662.441.2500 C: 662.645.5151

Anthony@TomSmithLand.com

TomSmithLandandHomes.com

Tom Smith
LAND AND HOMES

Expect More. Get More.

2011-2024
BEST
FRANCHISES

Information is believed to be accurate but not guaranteed.



A Real Estate Expert
You Can Trust!

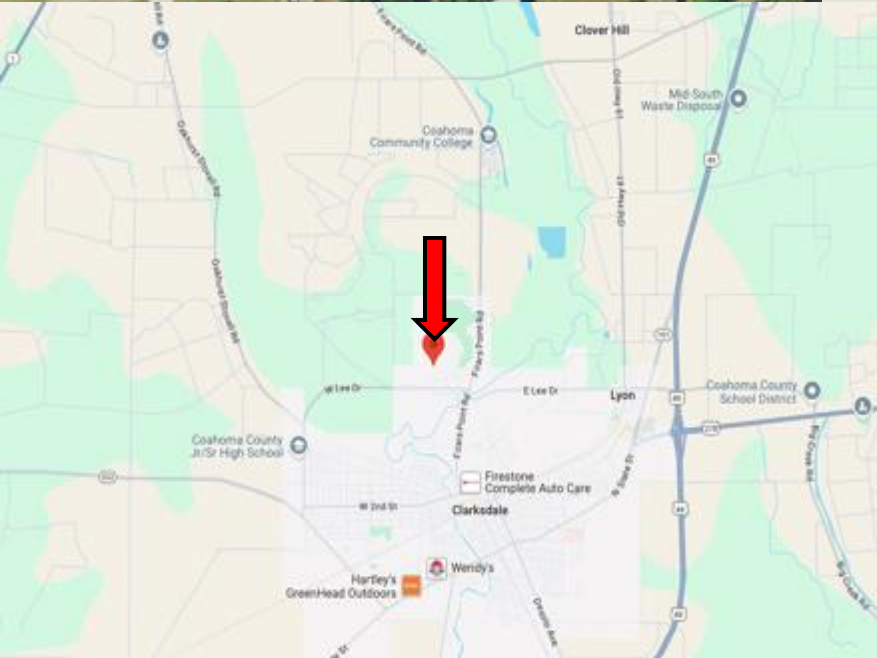
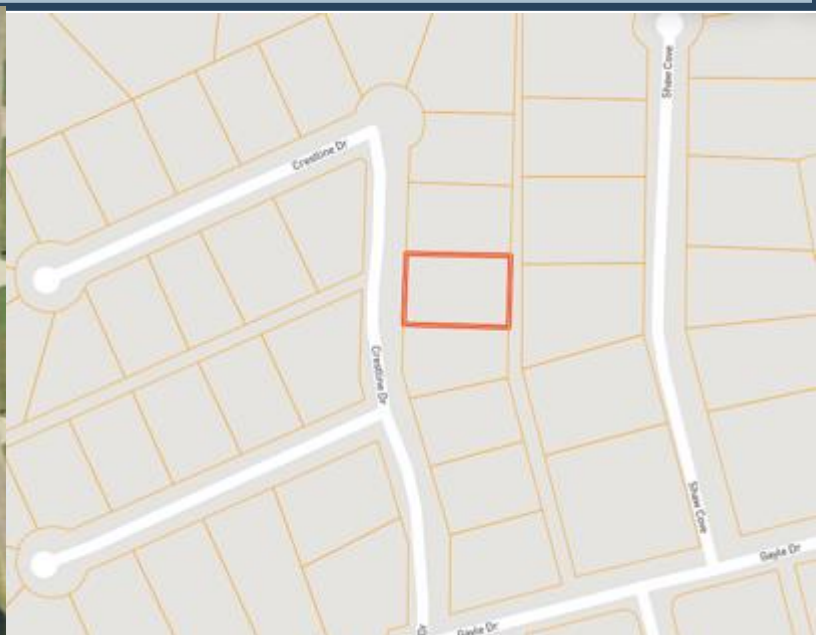
ANTHONY STEEN
REALTOR®
O: 662.441.2500 C: 662.645.5151
Anthony@TomSmithLand.com
TomSmithLandandHomes.com

Tom Smith
LAND AND HOMES
Expect More. Get More.

2011-2024
BEST
FRANCHISES

Information is believed to be accurate but not guaranteed.

MAPS | [Click for the Interactive](#)



Address: 260 Crestline Ave.
Clarksdale, MS 38614

Directions from Hwy 6 & Hwy 49 in Clarksdale, MS: Travel west on Hwy 6 for 0.6 miles. Turn right onto Hwy 161 N and travel 0.6 miles. Turn left onto Hopson St. and travel 0.4 miles. Continue onto Lee Dr. and travel 2.2 miles. Turn right onto Crestline Ave. After 0.3 miles, the house will be on the right.

[Google Map Link](#)



**ANTHONY
STEEN**

REALTOR®

Office: 662.441.2500

Cell: 662.645.5151

Anthony@TomSmithLand.com



Expect More. Get More.

A Real Estate Expert You Can Trust

TomSmithLandandHomes.com

Information is believed to be accurate but not guaranteed.

