

INVESTMENT PROPERTY

607 Deering Street, Cleveland, MS | \$89,950



Attention investors! This well-maintained two-bedroom, one-bathroom home in Cleveland, Bolivar County, MS, is a fantastic addition to any investment portfolio. With a durable metal roof, concrete driveway, and a fenced backyard, this property is move-in ready. It also serves as a perfect starter home. Don't miss out—contact Tracey Bell today to schedule a private showing and discover all this property offers!



**TRACEY
BELL**

MANAGING BROKER

Office: 662.441.2500

Cell: 662.719.4720

Tracey@TomSmithLand.com



Expect More. Get More.

A Real Estate Expert You Can Trust

TomSmithLandandHomes.com

Information is believed to be accurate but not guaranteed.





A Real Estate Expert
You Can Trust!

TRACEY BELL

MANAGING BROKER

O: 662.441.2500 C: 662.719.4720

Tracey@TomSmithLand.com

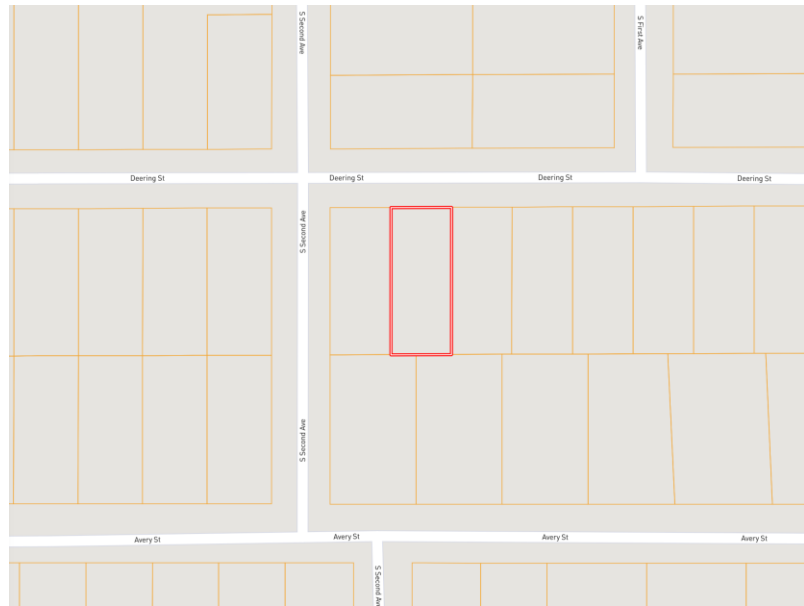
TomSmithLandandHomes.com



Expect More. Get More.



Information is believed to be accurate but not guaranteed.

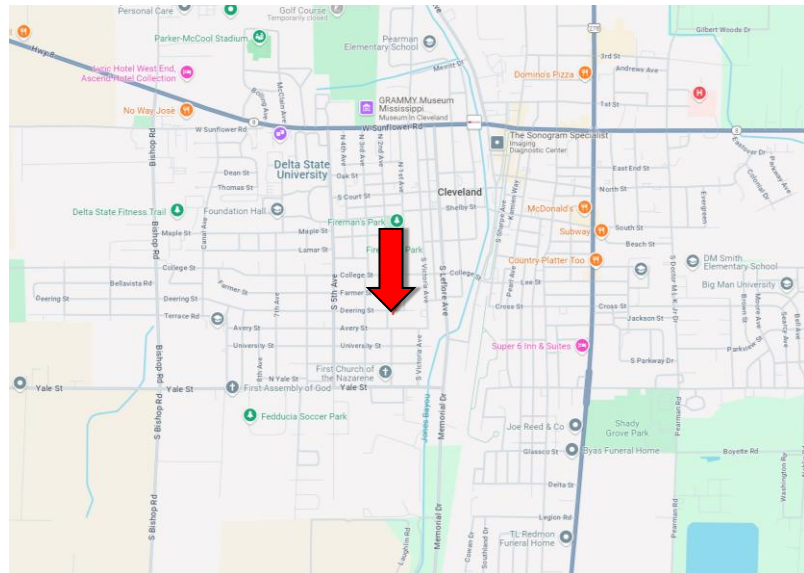


Directions from Hwy 8 & Hwy 61 in Cleveland:

Travel south on Hwy 61 for 0.6 miles. Turn right onto Lee Street, then continue onto College Street for 0.7 miles. Turn left onto S. 1st Avenue and travel 0.1 miles. Turn right onto Deering Street, the property will be on the left in 233 feet.

Address:

607 Deering Street, Cleveland, MS 38732



0.21± Acres
33.7373, -90.7292

[Google Maps Link](#)



TRACEY BELL

MANAGING BROKER

Office: 662.441.2500

Cell: 662.719.4720

Tracey@TomSmithLand.com



Expect More. Get More.

A Real Estate Expert You Can Trust

TomSmithLandandHomes.com

Information is believed to be accurate but not guaranteed.

