

RECREATIONAL HUNTING TRACT

138.83 Acres in Holmes County, MS



\$319,000

This surveyed 138.83±-acre tract in Holmes County, MS, is ready for its next owner. The property offers extensive trails, multiple food plots with shooting houses, and a few small ponds—two have bass and bream. The food plots have multiple shooting lanes cut into the timber, giving better opportunities to catch those deer slipping through the woods. During my initial inspection, plenty of signs of deer and turkey were present. Located just off Highway 14, the entrance features a homesite ready for construction, with water, power, and septic systems already in place. The property also has over 750 feet of road frontage on Highway 14 and 1,100 feet along Church Road in Goodman, MS. Conveniently positioned, it's only 2 minutes from Holmes Community College, 50 minutes from Jackson, and 30 minutes from Kosciusko. This property is a rare find with its multiple access points, well-maintained trails, shooting houses, food plots, and prime location. For a private showing, call or text Walker Trnum today!



**WALKER
TRANUM**
REALTOR®

Office: 662.268.6333

Cell: 662.769.1442

Walker@TomSmithHomes.com



Expect More. Get More.

A Real Estate Expert You Can Trust

TomSmithLandandHomes.com

Information is believed to be accurate but not guaranteed.





A Real Estate Expert
You Can Trust!

WALKER TRANUM

REALTOR®

O: 662.268.6333 C: 662.769.1442

Walker@TomSmithHomes.com

TomSmithLandandHomes.com



Expect More. Get More.





A Real Estate Expert *You Can Trust!*

WALKER TRANUM

REALTOR®

O: 662.268.6333 C: 662.769.1442

Walker@TomSmithHomes.com

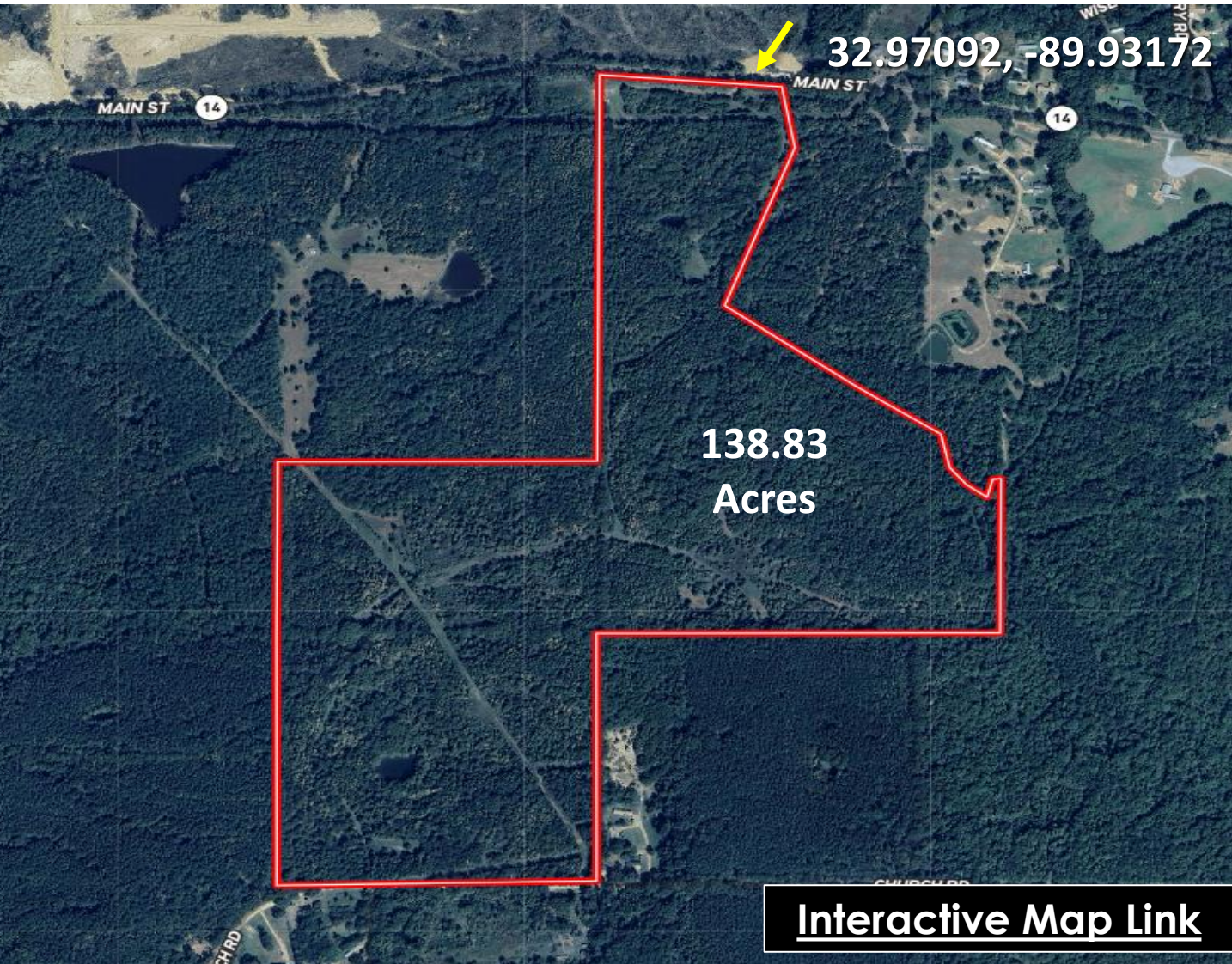
TomSmithLandandHomes.com



Expect More. Get More.



Aerial Map



A Real Estate Expert
You Can Trust!

WALKER TRANUM

REALTOR®

O: 662.268.6333 C: 662.769.1442

Walker@TomSmithHomes.com

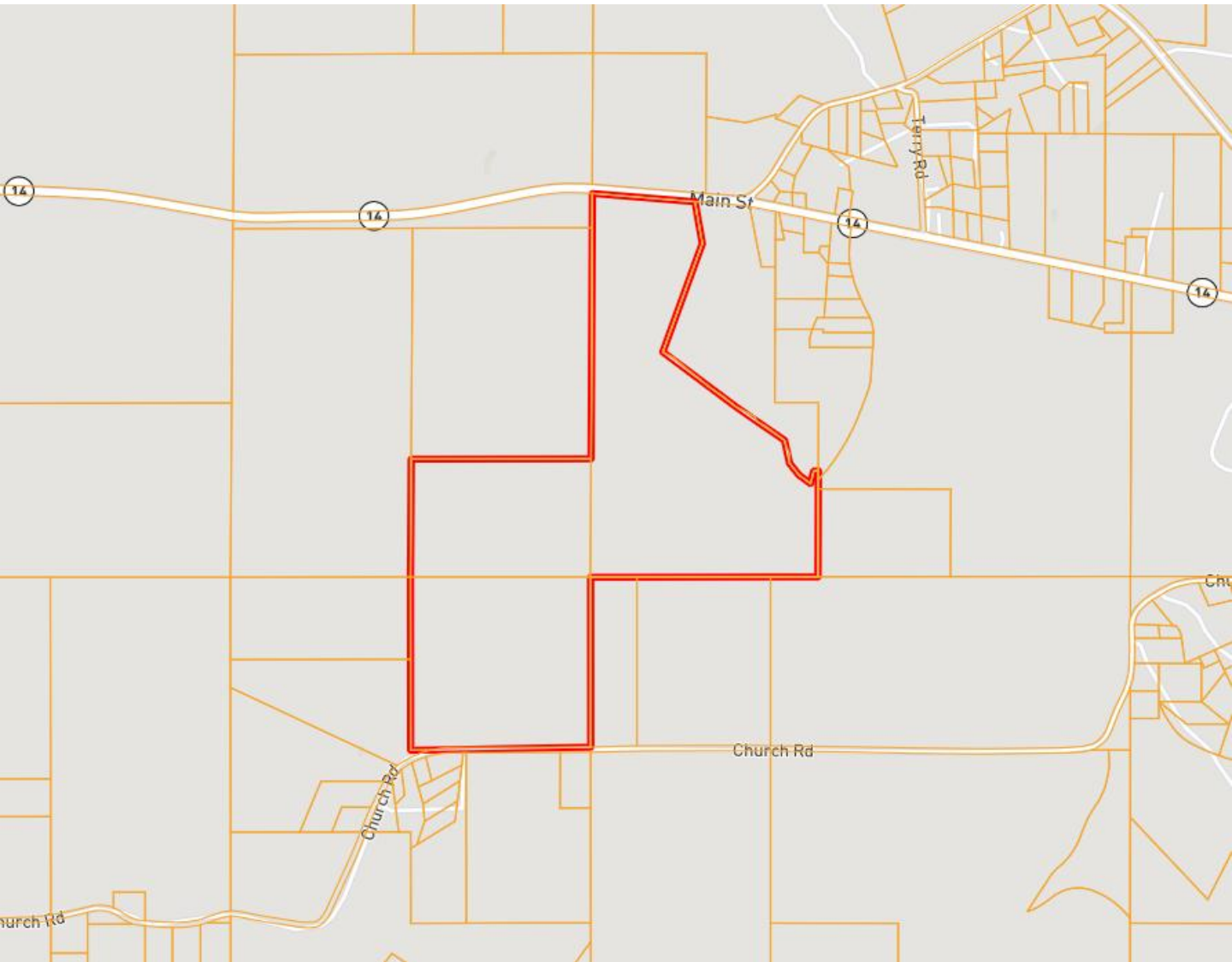
TomSmithLandandHomes.com



Expect More. Get More.



Ownership Map



A Real Estate Expert
You Can Trust!

WALKER TRANUM

REALTOR®

O: 662.268.6333 C: 662.769.1442

Walker@TomSmithHomes.com

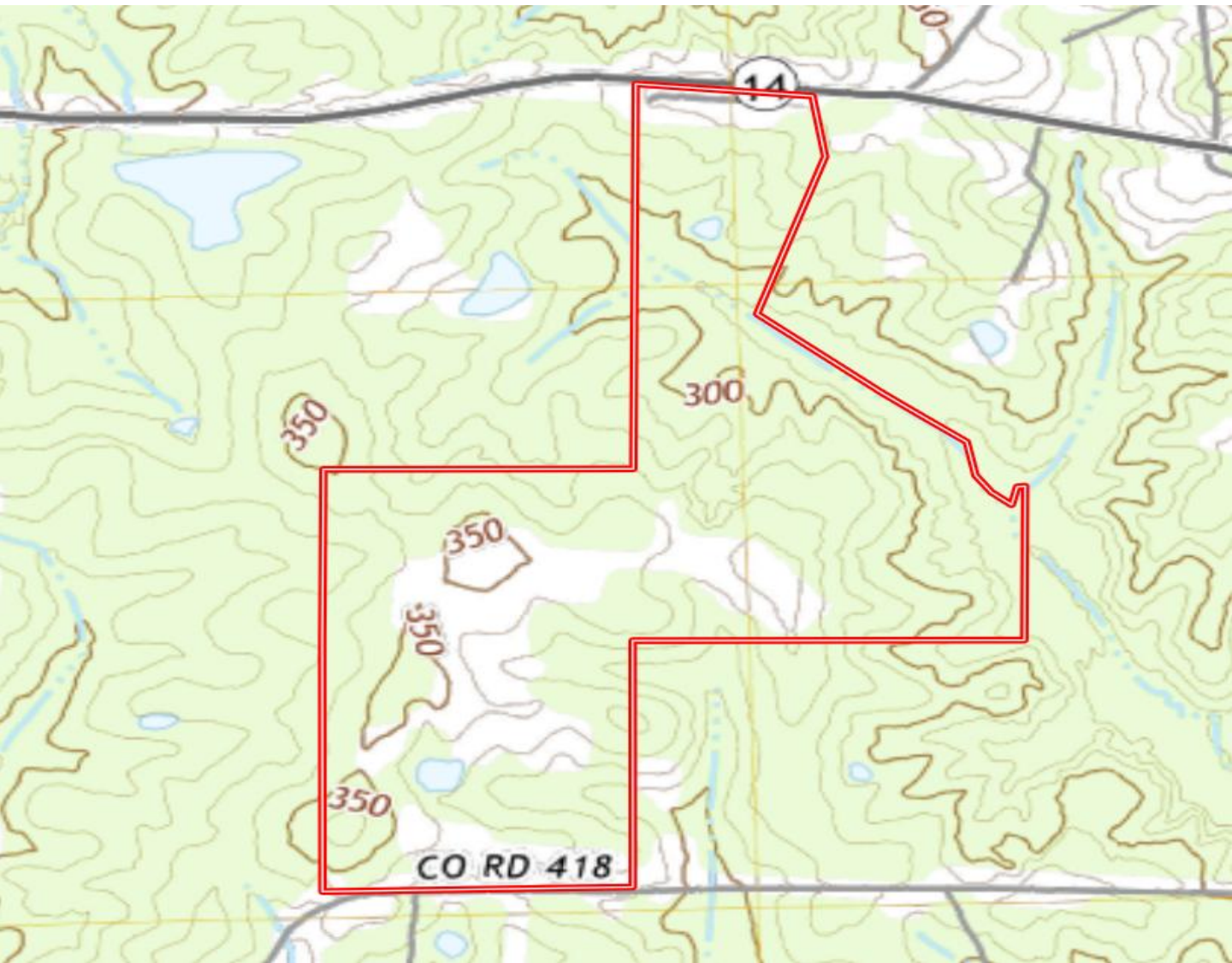
TomSmithLandandHomes.com



Expect More. Get More.



Topo Map



A Real Estate Expert
You Can Trust!

WALKER TRANUM

REALTOR®

O: 662.268.6333 C: 662.769.1442

Walker@TomSmithHomes.com

TomSmithLandandHomes.com

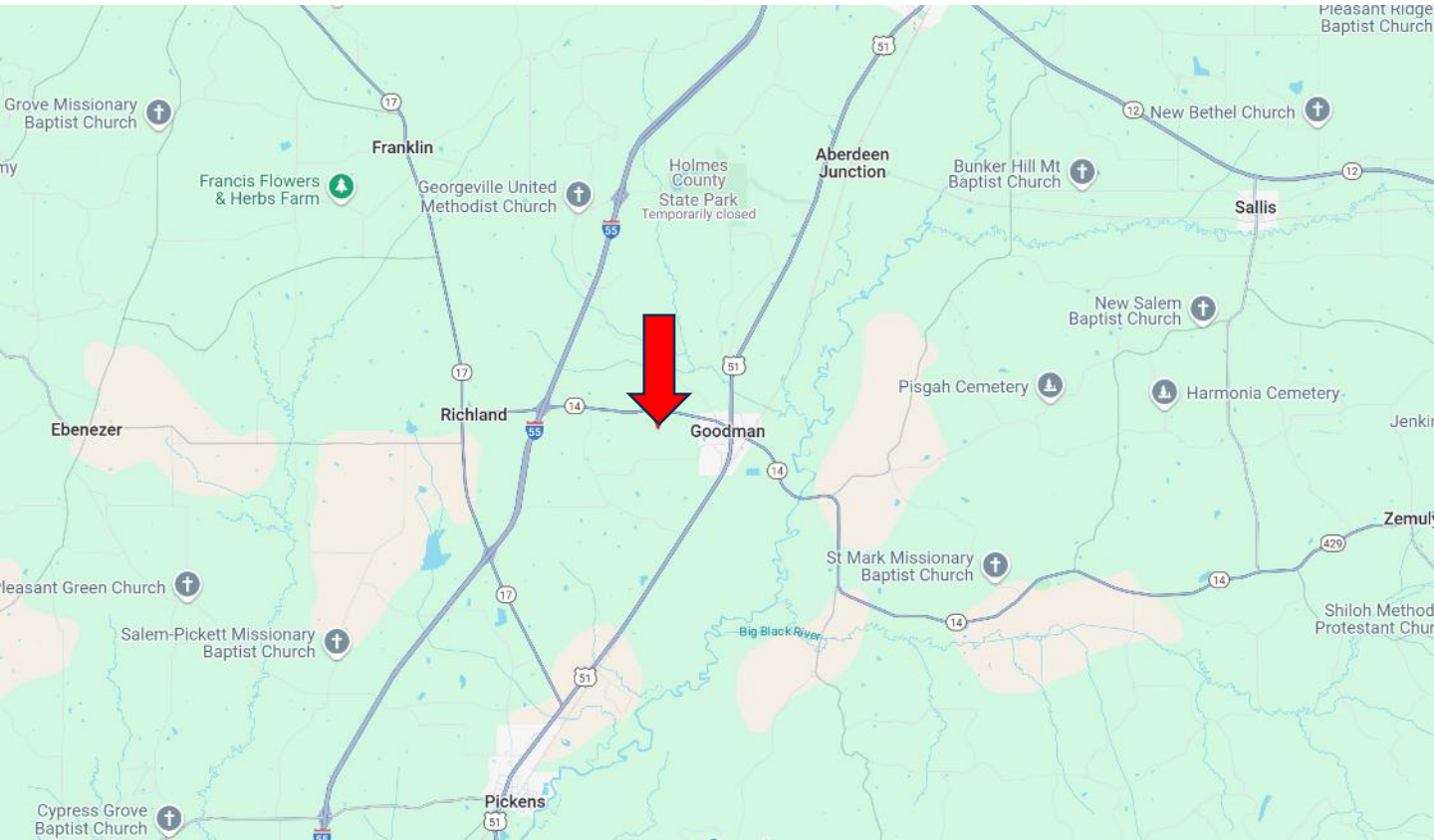


Expect More. Get More.



Information is believed to be accurate but not guaranteed.

Directional Map



Directions from the Intersection of Hwy 51 and Hwy 14 in Goodman, MS: Travel Hwy 14 West for 1.1 miles. The property will be on your left. [GOOGLE MAP LINK](#)



**WALKER
TRANUM**
REALTOR®

Office: 662.268.6333

Cell: 662.769.1442

Walker@TomSmithHomes.com



Expect More. Get More.

A Real Estate Expert You Can Trust

TomSmithLandandHomes.com

Information is believed to be accurate but not guaranteed.

