

# WASHINGTON COUNTY CAMPSITE

188 Richardson Road, Hollandale, MS 38748



- 1± Acre Lot
- Very Private & Remote
- Surrounded by Row Crops
- Two Water Wells
- Private Road
- Concrete Slab with Rough Plumbing, Septic System
- Close to Multiple MS Wildlife Reserves
- Perfect Location for Hunting Camp

**\$40,000**



**EMERSON  
LOVELACE**

REALTOR®

Office: 662.441.2500

Cell: 601.715.3302

Emerson@TomSmithLand.com



Expect More. Get More.

**A Real Estate Expert You Can Trust**

TomSmithLandandHomes.com

Information is believed to be accurate but not guaranteed.







Look at this secluded 1± acre lot in Washington County, MS, ideal for a hunting camp or weekend getaway. Located among row crops, this property offers unmatched privacy and is accessible via a private road. It comes ready with two water wells, a septic system, and a concrete slab with rough plumbing already in place. Enjoy easy access to nearby Mississippi wildlife reserves, making it a prime spot for hunting and outdoor adventures. Call Emerson to schedule your tour today!



## A Real Estate Expert You Can Trust!

**EMERSON LOVELACE**  
REALTOR®

O: 662.441.2500 C: 601.715.3302

Emerson@TomSmithLand.com

TomSmithLandandHomes.com

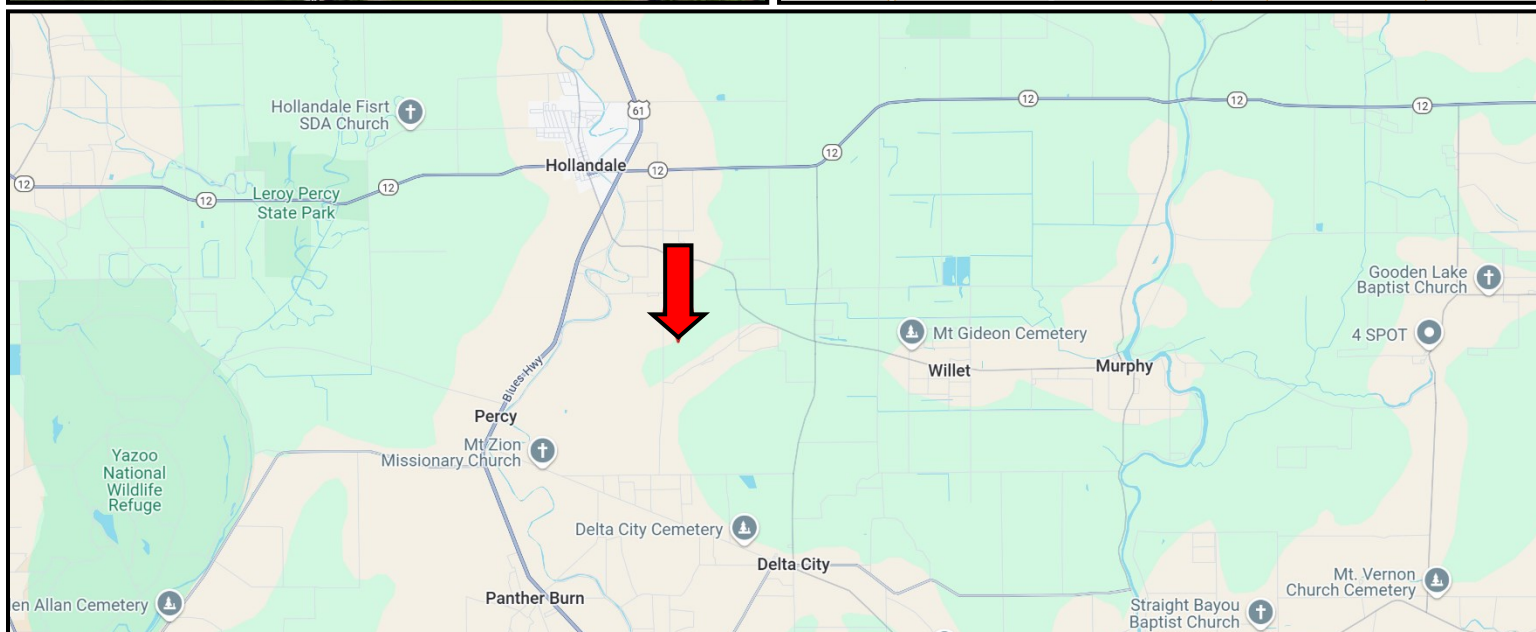
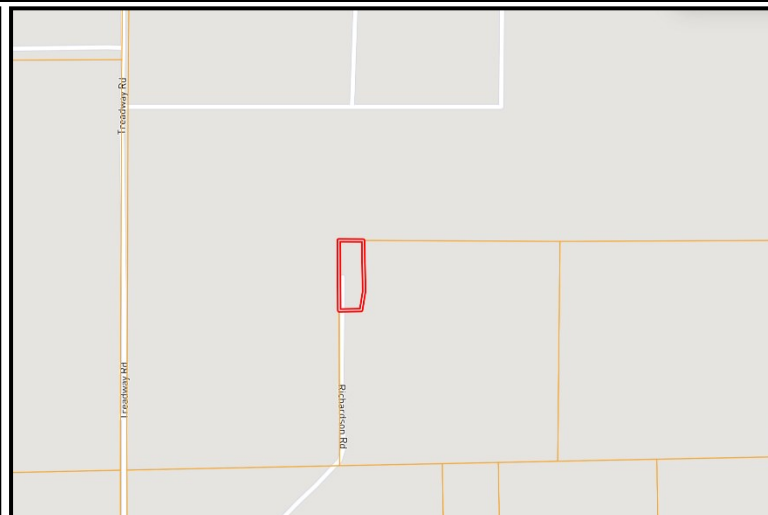


Expect More. Get More.





# MAPS | [Click Here for the Interactive Map Link](#)



Directions from Hwy 61 and Hwy 12 in Hollandale, MS: Travel Southwest on on Hwy 61 for 1.1 mile. Turn right onto Treadway Rd. and travel 1.9 miles. Turn left onto Richardson Rd. After 0.5 miles, the property will be on the right. [188 Richardson Rd., Hollandale, MS 38748](#)—[Click for Google Map Link](#)



**EMERSON  
LOVELACE**

REALTOR®

Office: 662.441.2500

Cell: 601.715.3302

[Emerson@TomSmithLand.com](mailto:Emerson@TomSmithLand.com)



Expect More. Get More.

**A Real Estate Expert You Can Trust**

[TomSmithLandandHomes.com](http://TomSmithLandandHomes.com)

Information is believed to be accurate but not guaranteed.

