

Charming Three-Bedroom Home on a Corner Lot in Sunflower County, MS  
701 West Gresham Street, Indianola, MS 38751 • \$235,000



Discover a beautifully maintained three-bedroom, two-bath home on a desirable corner lot in Sunflower County, MS. This property is in excellent condition and offers a range of modern updates. The kitchen and bathrooms have been updated, featuring stainless steel appliances, while the gas log fireplace in the living area adds warmth and charm. An inviting sunroom offers the perfect spot for relaxing, with quality hardwood floors and scored concrete throughout, enhancing the home's appeal. With a new roof, washer, and dryer included, as well as a two-car garage, this home is truly move-in ready and ideally located. Don't miss the chance to make it yours!



**EMERSON  
LOVELACE**

REALTOR®

Office: 662.441.2500

Cell: 601.715.3302

Emerson@TomSmithLand.com



Expect More. Get More.

**A Real Estate Expert You Can Trust**

TomSmithLandandHomes.com

Information is believed to be accurate but not guaranteed.





# A Real Estate Expert You Can Trust!

**EMERSON LOVELACE**  
REALTOR®

O: 662.441.2500 C: 601.715.3302

Emerson@TomSmithLand.com

TomSmithLandandHomes.com



Expect More. Get More.



Information is believed to be accurate but not guaranteed.



## A Real Estate Expert You Can Trust!

**EMERSON LOVELACE**  
REALTOR®

O: 662.441.2500 C: 601.715.3302

Emerson@TomSmithLand.com

TomSmithLandandHomes.com

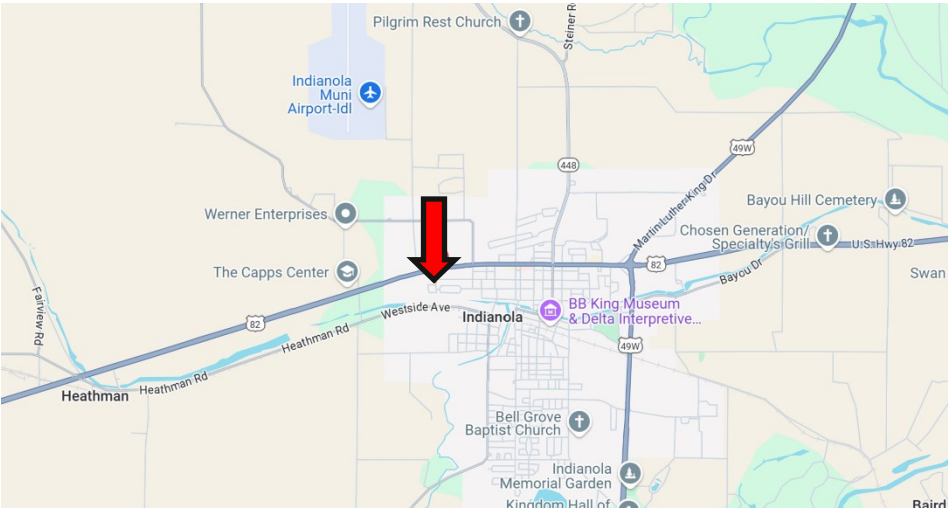
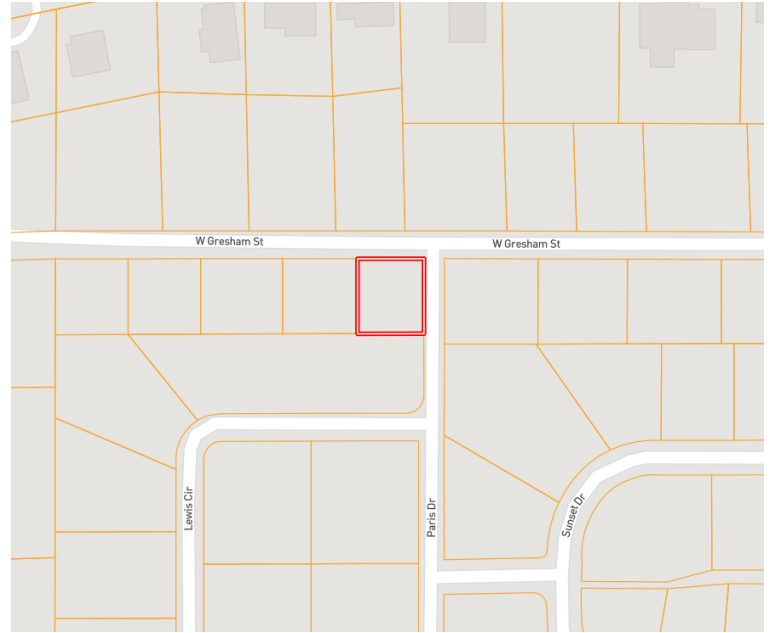


Expect More. Get More.

Information is believed to be accurate but not guaranteed.



# MAPS | INTERACTIVE MAP LINK



Directions from the intersection of Hwy 49W and Hwy 82 in Indianola, MS: Travel Hwy 82 W for 1.2 miles. Turn left onto Marie Ave. and travel 0.1 miles. Turn right at the second cross street onto Gresham Street and travel 0.4 miles. The home will be on the left at the corner of W Gresham and Paris Dr.

701 W Gresham St., Indianola, MS 38751—Click for Google Map Link



**EMERSON  
LOVELACE**  
REALTOR®

Office: 662.441.2500  
Cell: 601.715.3302

Emerson@TomSmithLand.com



Expect More. Get More.

**A Real Estate Expert You Can Trust**

TomSmithLandandHomes.com

Information is believed to be accurate but not guaranteed.

