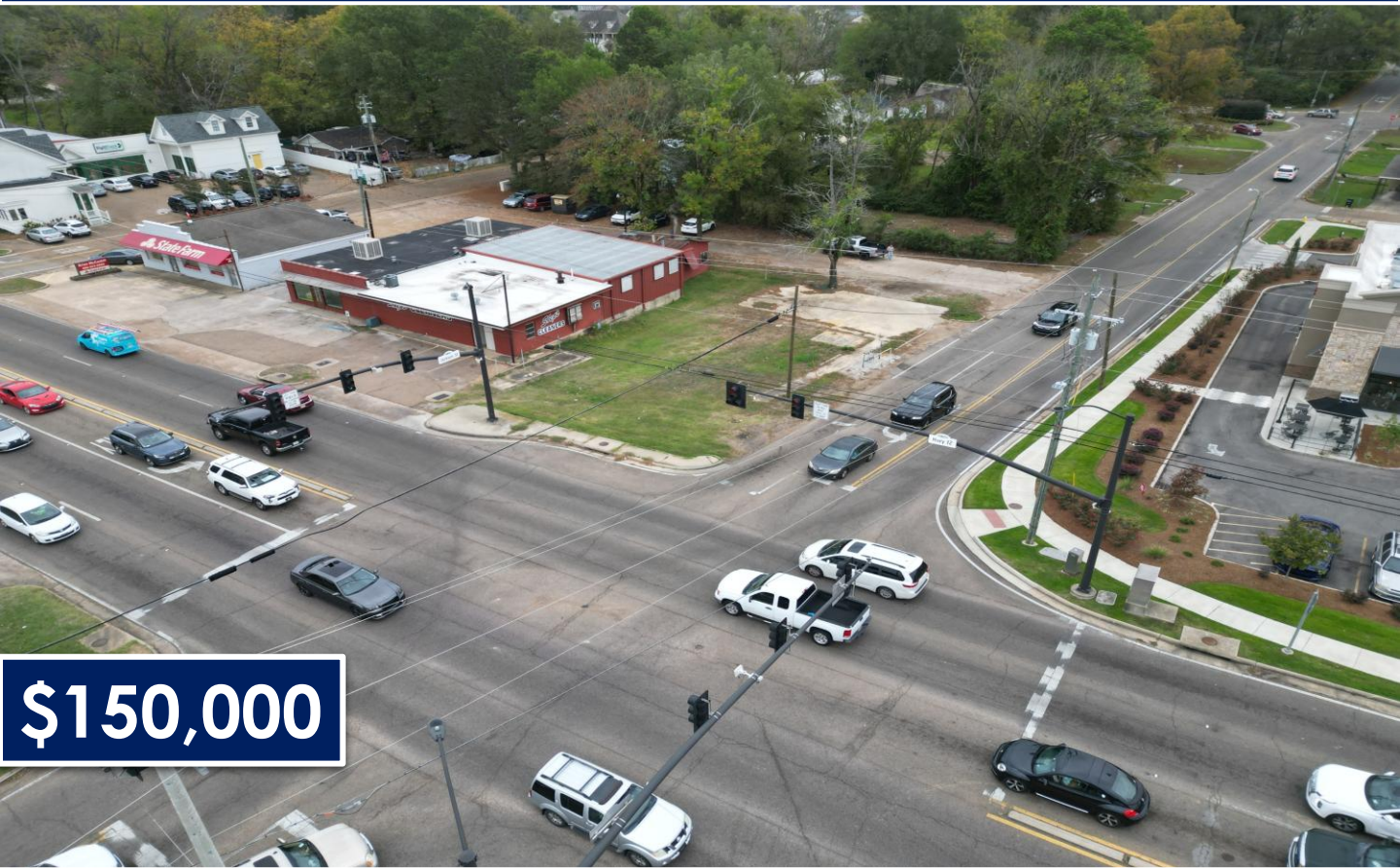


High Traffic Commercial Lot .01+/- Acres in Oktibbeha County, MS



\$150,000

Are you looking for a commercial lot in Starkville, MS? Look no further. This property is located on the corner of Highway 12 and South Jackson Street in the heart of Starkville. It is prime for any type of commercial business, such as retail or office space. It offers quick access to Mississippi State University, downtown Starkville, and all areas of town. A commercial lot with a high traffic count in this location is a rare find. To schedule a private showing, call or text Walker Tranum today!



**WALKER
TRANUM**
REALTOR®

Office: 662.268.6333

Cell: 662.769.1442

Walker@TomSmithHomes.com



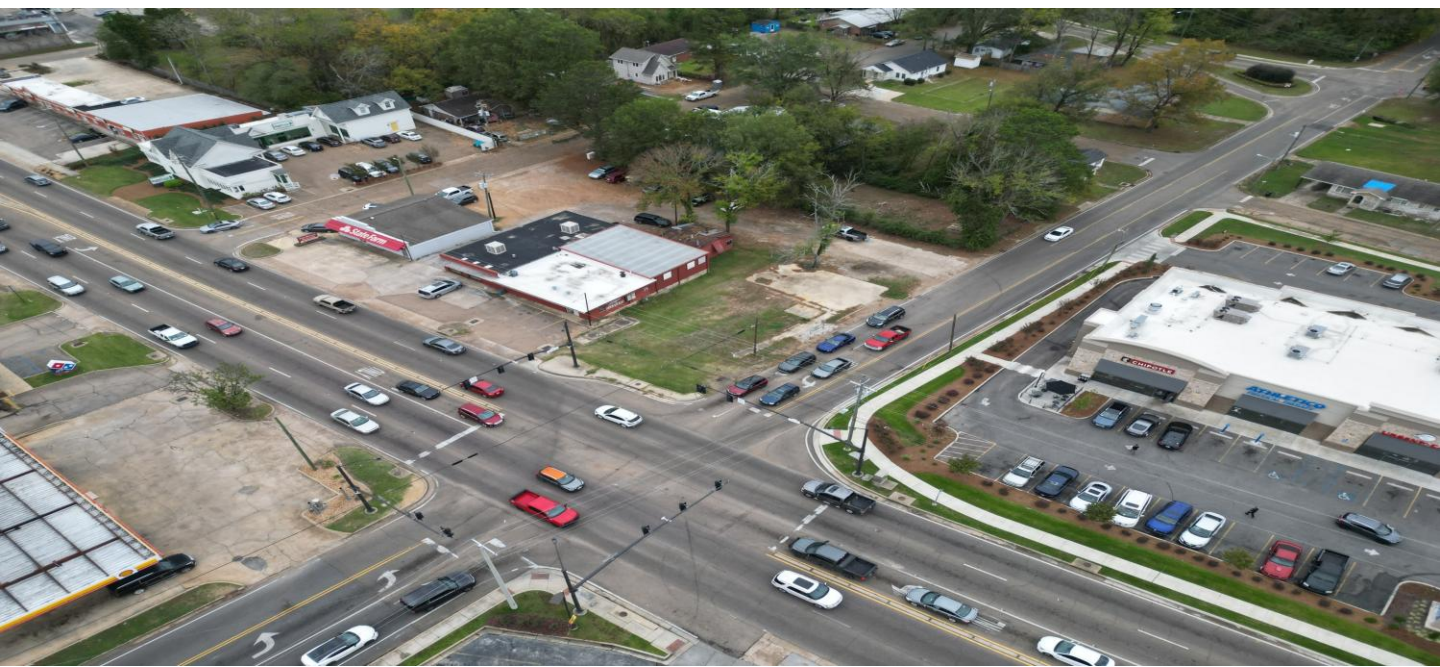
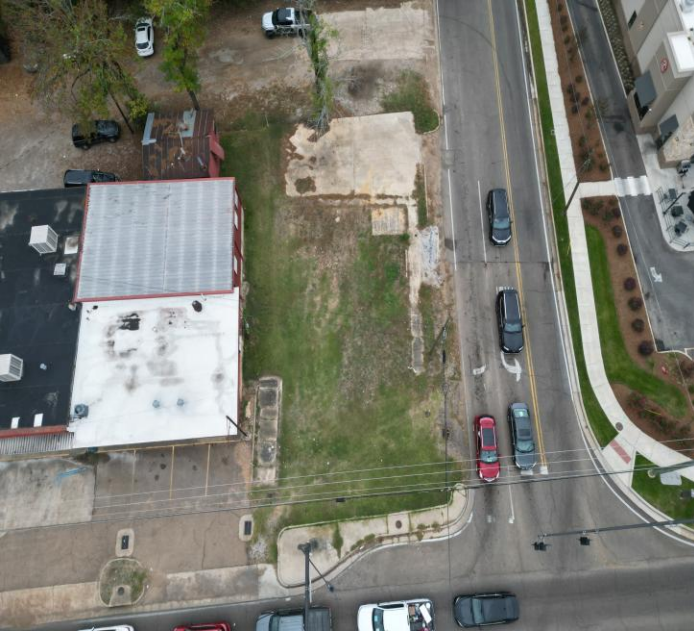
Expect More. Get More.

A Real Estate Expert You Can Trust

TomSmithLandandHomes.com

Information is believed to be accurate but not guaranteed.





**WALKER
TRANUM**

REALTOR®

Office: 662.268.6333

Cell: 662.769.1442

Walker@TomSmithHomes.com



Expect More. Get More.

A Real Estate Expert You Can Trust

TomSmithLandandHomes.com

Information is believed to be accurate but not guaranteed.



Aerial Map



**WALKER
TRANUM**
REALTOR®

Office: 662.268.6333

Cell: 662.769.1442

Walker@TomSmithHomes.com



Expect More. Get More.

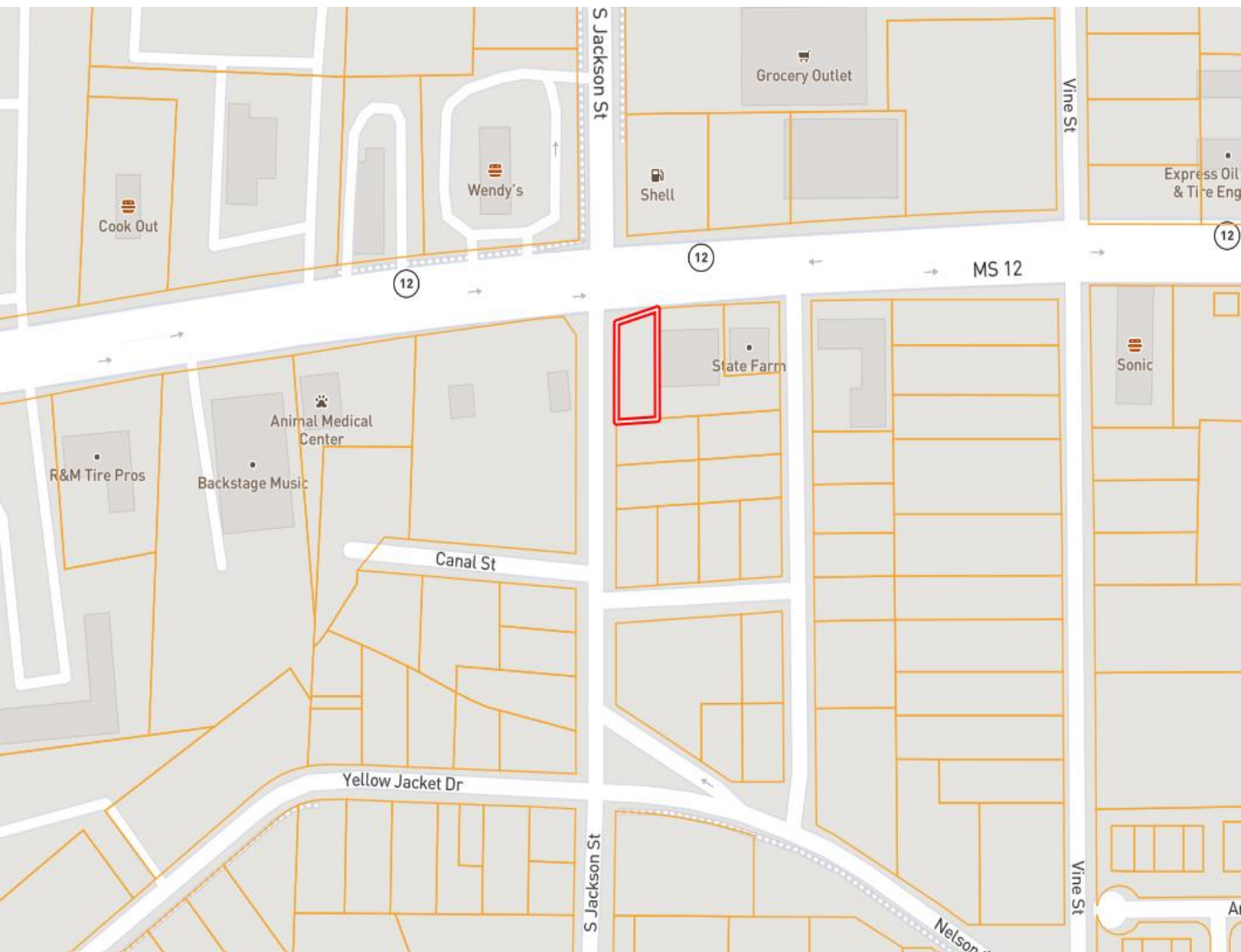
A Real Estate Expert You Can Trust

TomSmithLandandHomes.com

Information is believed to be accurate but not guaranteed.



Ownership Map



**WALKER
TRANUM**
REALTOR®

Office: 662.268.6333

Cell: 662.769.1442

Walker@TomSmithHomes.com



Expect More. Get More.

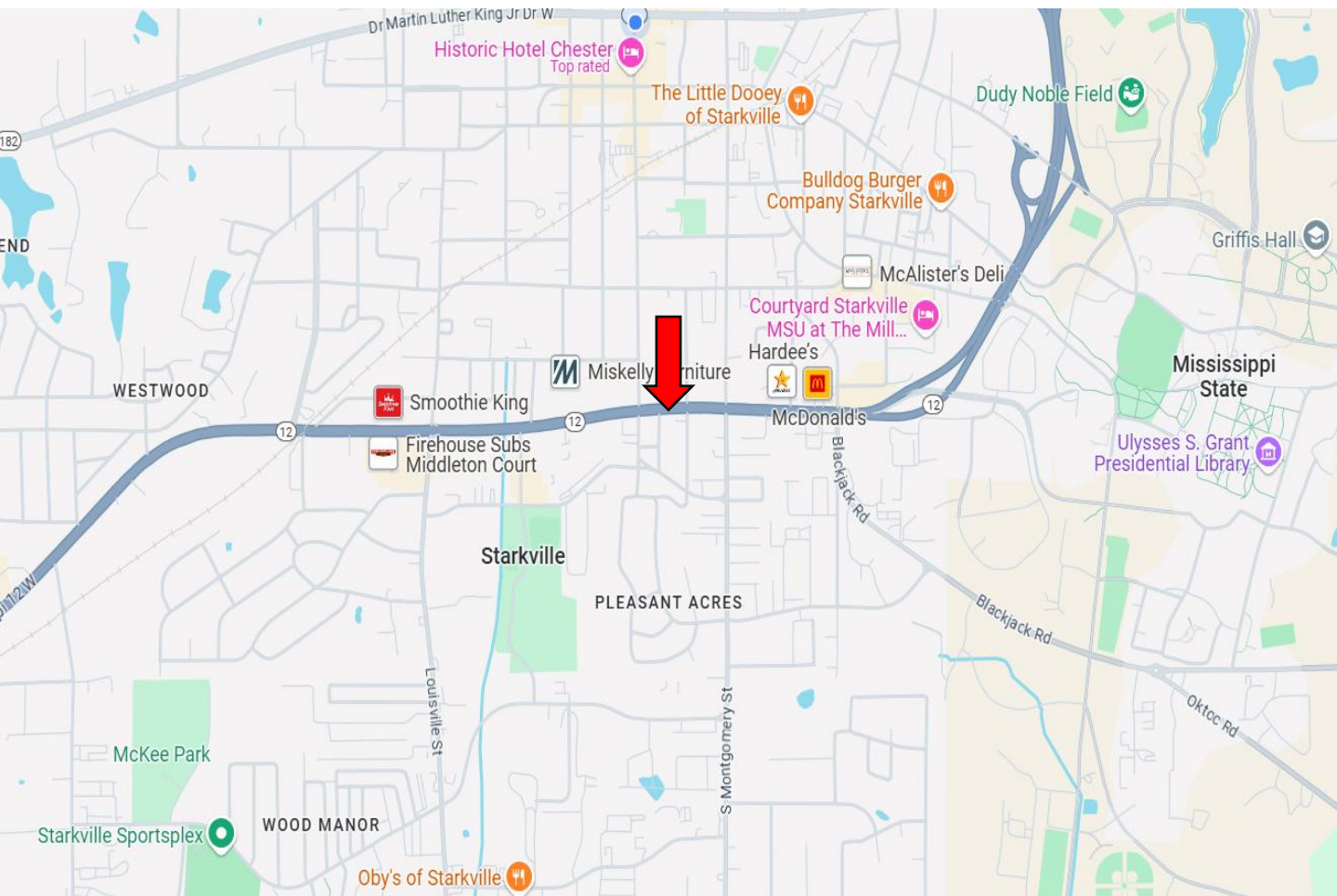
A Real Estate Expert You Can Trust

TomSmithLandandHomes.com

Information is believed to be accurate but not guaranteed.



Directional Map



Directions from Mississippi State University: Take Burney Rd/Walker Rd, Creelman St, and Stone Blvd to MS-12 W, then travel 0.8 miles. Turn left onto MS-12 West and travel 9 miles. Turn left onto South Jackson Street. The property will be on your left. [GOOGLE MAP LINK](#)



**WALKER
TRANUM**
REALTOR®

Office: 662.268.6333

Cell: 662.769.1442

Walker@TomSmithHomes.com



Expect More. Get More.

A Real Estate Expert You Can Trust

TomSmithLandandHomes.com

Information is believed to be accurate but not guaranteed.

