

Prime Commercial Opportunity in Humphreys County

531 Hayden Street, Belzoni, MS 39038



Located in the heart of Belzoni in Humphreys County, this commercial property offers a strategic location and versatile amenities ideal for a variety of business ventures.

- **1± Acre Commercial Lot:** Spacious grounds provide room for business growth or additional development
- **1,456 Sq. Ft. Retail Space:** Well-maintained and ready for customization, perfect for retail, service-oriented businesses, or office space
- **3-Bay Car Wash:** Established facility with potential for steady revenue, easily accessible for customers
- **Large Paved Parking Lot:** Offers convenient access and parking, accommodating high customer flow and multiple vehicle types.

Take advantage of this property's high-traffic location and existing infrastructure to launch or expand your business in a thriving commercial area. Contact Emerson to schedule your tour today!



EMERSON
LOVELACE

REALTOR®

Office: 662.441.2500

Cell: 601.715.3302

Emerson@TomSmithLand.com



Expect More. Get More.

A Real Estate Expert You Can Trust

TomSmithLandandHomes.com

Information is believed to be accurate but not guaranteed.





A Real Estate Expert You Can Trust!

EMERSON LOVELACE
REALTOR®

O: 662.441.2500 C: 601.715.3302

Emerson@TomSmithLand.com

TomSmithLandandHomes.com

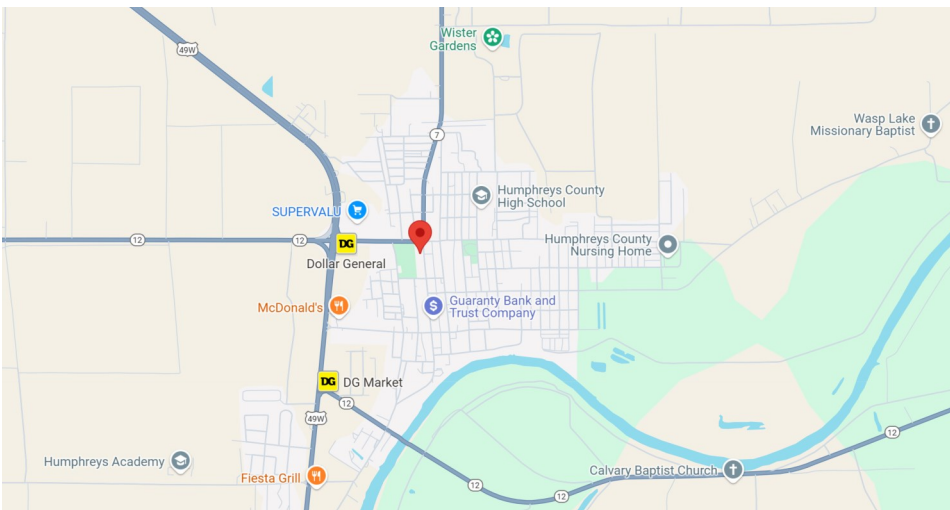
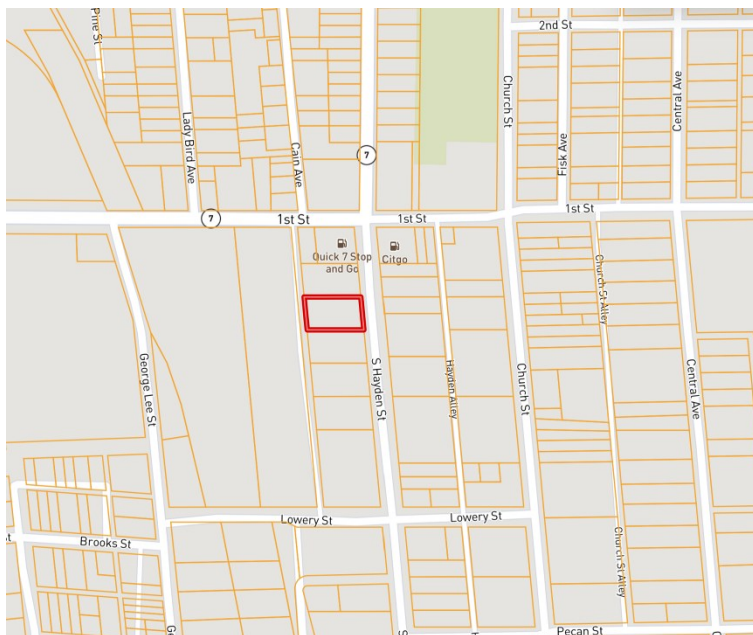


Expect More. Get More.



Information is believed to be accurate but not guaranteed.

MAPS | [CLICK HERE FOR INTERACTIVE MAP LINK](#)



Directions from Hwy 12 and Hwy 49W in Belzoni, MS: Turn onto Hwy 49W North and travel 0.6 miles. Turn right onto 1st Street and travel 0.4 miles. Turn right onto Hayden Street. After 249 feet, the property will be on your right.

531 N Hayden St. Belzoni, MS 39038—
[Click for Google Map Link](#)



**EMERSON
LOVELACE**

REALTOR®

Office: 662.441.2500

Cell: 601.715.3302

Emerson@TomSmithLand.com



Expect More. Get More.

A Real Estate Expert You Can Trust

TomSmithLandandHomes.com

Information is believed to be accurate but not guaranteed.

