

# RECREATIONAL HARDWOOD TRACT

## 15± Acres in Copiah County, MS



\$60,000

Looking for prime property in Copiah County, MS? This 15± acre parcel, located just off MS-27 in the picturesque Rockport community, is a hidden gem. The land features a stunning mix of mature hardwoods and scattered pines, creating a serene and scenic setting. Whether envisioning a recreational retreat or the perfect spot to build your custom home, this property offers endless possibilities. Don't miss the opportunity to own this versatile and beautiful piece of land! Call Clif to schedule your tour today!



CLIF  
**CANNON**

MANAGING BROKER

Office: 601.990.5070

Cell: 601.565.1070

Clif@TomSmithLand.com



Expect More. Get More.

**A Real Estate Expert You Can Trust**

TomSmithLandandHomes.com

Information is believed to be accurate but not guaranteed.







**CLIF CANNON**

REALTOR®

Office: 601.990.5070

Cell: 601.565.1070

Clif@TomSmithLand.com



**A Real Estate Expert You Can Trust**

TomSmithLandandHomes.com

Information is believed to be accurate but not guaranteed.





# Aerial Map



[Click Here for the LandId Interactive Map Link](#)

**CLIF CANNON**

REALTOR®

Office: 601.990.5070

Cell: 601.565.1070

Clif@TomSmithLand.com



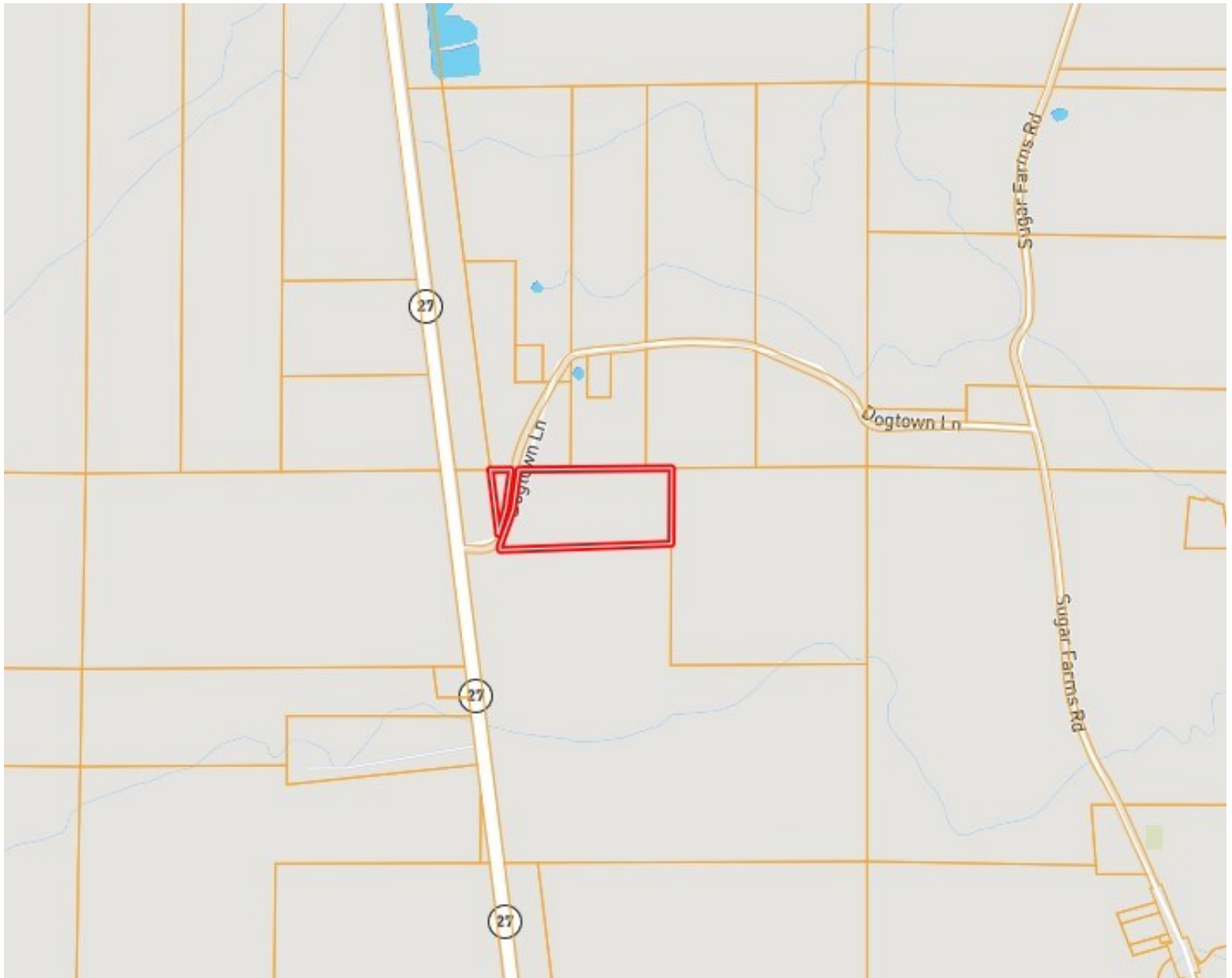
A Real Estate Expert You Can Trust

TomSmithLandandHomes.com

Information is believed to be accurate but not guaranteed.



# Ownership Map



**CLIF CANNON**

REALTOR®

Office: 601.990.5070

Cell: 601.565.1070

Clif@TomSmithLand.com



**A Real Estate Expert You Can Trust**

TomSmithLandandHomes.com

Information is believed to be accurate but not guaranteed.





# Topographic Map



**CLIF CANNON**

REALTOR®

Office: 601.990.5070

Cell: 601.565.1070

Clif@TomSmithLand.com



**A Real Estate Expert You Can Trust**

[TomSmithLandandHomes.com](http://TomSmithLandandHomes.com)

Information is believed to be accurate but not guaranteed.



# Flood Map



**CLIF CANNON**

REALTOR®

Office: 601.990.5070

Cell: 601.565.1070

Clif@TomSmithLand.com



**A Real Estate Expert You Can Trust**

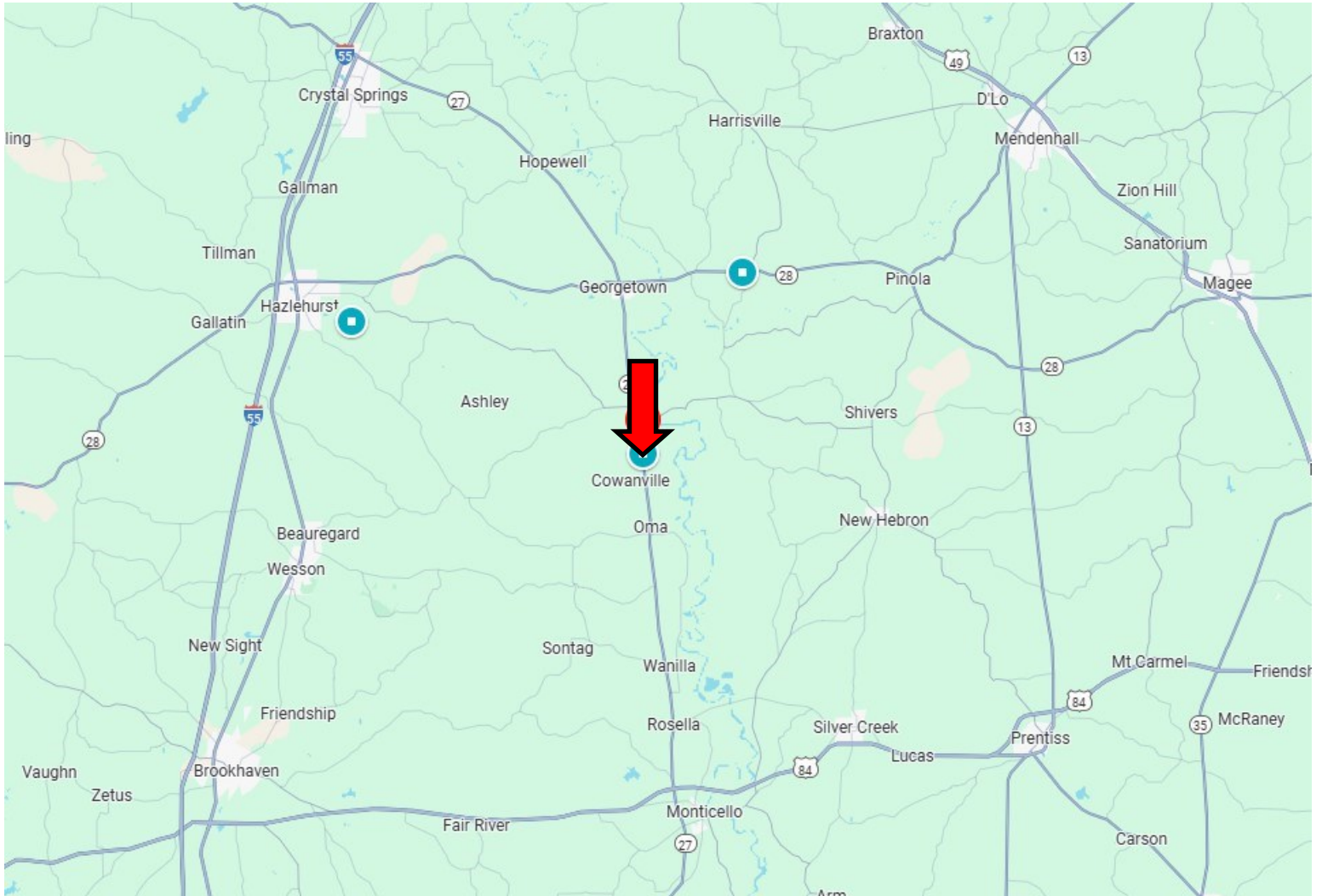
TomSmithLandandHomes.com

Information is believed to be accurate but not guaranteed.





# Directional Map



**Directions from the intersection of I-55 and MS-28 in Hazlehurst, MS: Take exit 61 and travel east onto MS-28 for 14.6 miles. Turn right onto MS-27 and travel for 7.1 miles. Turn left onto Dogtown Lane and travel 300 ft. The property will be on both sides of the road. [Google Map Link](#)**



**CLIF  
CANNON**

MANAGING BROKER

Office: 601.990.5070

Cell: 601.565.1070

Clif@TomSmithLand.com



Expect More. Get More.

**A Real Estate Expert You Can Trust**

TomSmithLandandHomes.com

Information is believed to be accurate but not guaranteed.

