

Recently Remodeled 4 Bedroom, 2.5 Bathroom Home
1007 Maple Street Cleveland, MS 38732 | \$189,500



If you're seeking a move-in-ready home conveniently located across the street from Delta State University, this is the one for you! The home features a spacious living room, a bright sunroom, and a dining room and offers plenty of room for entertaining. Recent updates include a new central heat and air conditioning unit, appliances, flooring, and paint. The large backyard, shaded by mature trees, adds charm and functionality. To explore the many updated features of this Bolivar County, MS property, contact Tracey Bell today!

TRACEY
BELL

MANAGING BROKER

Office: 662.441.2500

Cell: 662.719.4720

Tracey@TomSmithLand.com



Expect More. Get More.

A Real Estate Expert You Can Trust

TomSmithLandandHomes.com

Information is believed to be accurate but not guaranteed.





A Real Estate Expert
You Can Trust!

TRACEY BELL
MANAGING BROKER
O: 662.441.2500 C: 662.719.4720
Tracey@TomSmithLand.com
TomSmithLandandHomes.com

Tom Smith
LAND AND
HOMES
Expect More. Get More.





A Real Estate Expert *You Can Trust!*

TRACEY BELL

MANAGING BROKER

O: 662.441.2500 C: 662.719.4720

Tracey@TomSmithLand.com

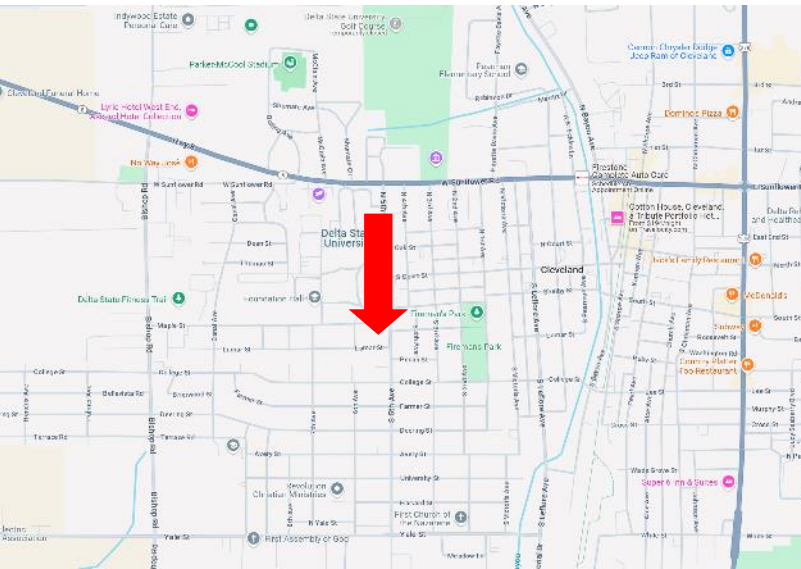
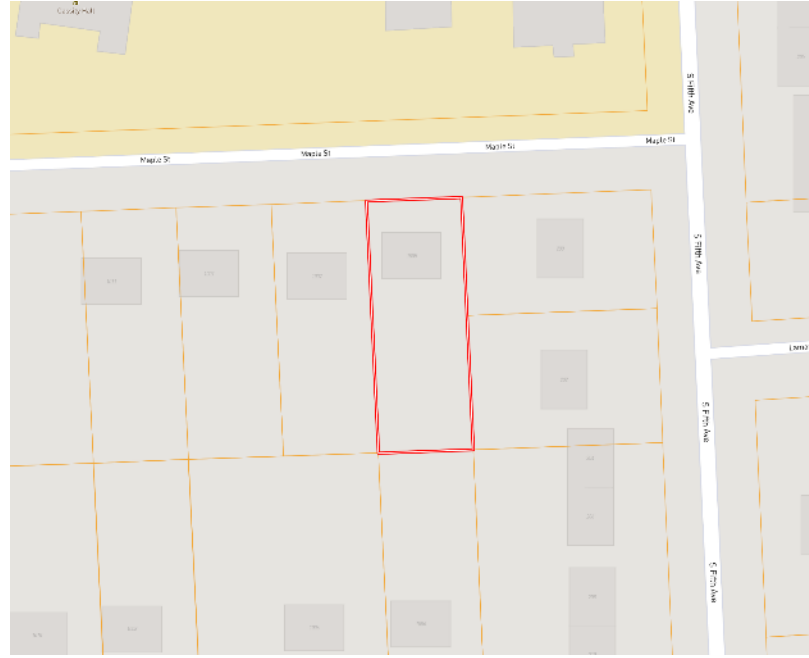
TomSmithLandandHomes.com



Expect More. Get More.



0.22± Acres
33.7417, -90.7341



Directions from Hwy 8 & Hwy 61 in Cleveland:

Travel west on HWY 8 for 1 mile before turning left onto N. Fifth Avenue. After 0.4 miles, turn right onto Maple Street. The destination will be on your left in 246'.

Address: 1007 Maple Street, Cleveland, MS 38732

[Google Maps Link](#)

**TRACEY
BELL**

MANAGING BROKER

Office: 662.441.2500

Cell: 662.719.4720

Tracey@TomSmithLand.com



Expect More. Get More.

A Real Estate Expert You Can Trust

TomSmithLandandHomes.com

Information is believed to be accurate but not guaranteed.

