

Recently Remodeled 4 Bedroom, 2.5 Bathroom Home  
1007 Maple Street Cleveland, MS 38732 | \$184,500



If you're seeking a move-in-ready home conveniently located across the street from Delta State University, this is the one for you! The home features a spacious living room, a bright sunroom, and a dining room and offers plenty of room for entertaining. Recent updates include a new central heat and air conditioning unit, appliances, flooring, and paint. The large backyard, shaded by mature trees, adds charm and functionality. To explore the many updated features of this Bolivar County, MS property, contact Tracey Bell today!

**TRACEY  
BELL**

MANAGING BROKER

Office: 662.441.2500

Cell: 662.719.4720

Tracey@TomSmithLand.com



Expect More. Get More.

**A Real Estate Expert You Can Trust**

TomSmithLandandHomes.com

Information is believed to be accurate but not guaranteed.





**A Real Estate Expert**  
*You Can Trust!*

**TRACEY BELL**

MANAGING BROKER

O: 662.441.2500 C: 662.719.4720

Tracey@TomSmithLand.com

TomSmithLandandHomes.com



Expect More. Get More.





## A Real Estate Expert *You Can Trust!*

**TRACEY BELL**

MANAGING BROKER

O: 662.441.2500 C: 662.719.4720

Tracey@TomSmithLand.com

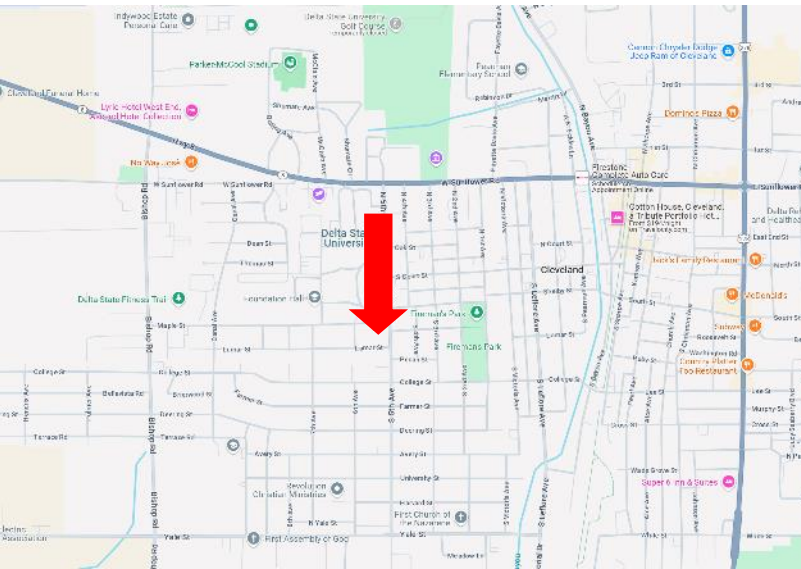
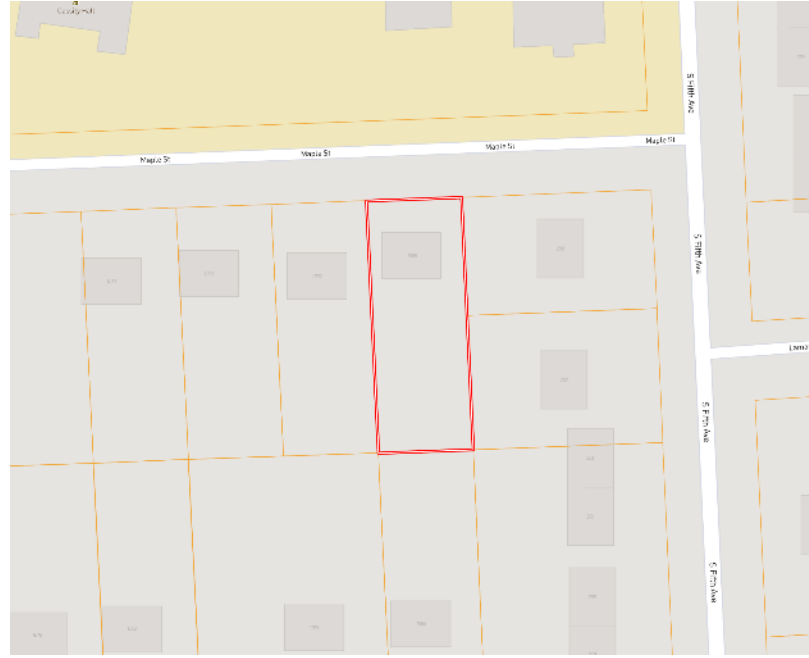
TomSmithLandandHomes.com



Expect More. Get More.



0.22± Acres  
33.7417, -90.7341



### Directions from Hwy 8 & Hwy 61 in Cleveland:

Travel west on HWY 8 for 1 mile before turning left onto N. Fifth Avenue. After 0.4 miles, turn right onto Maple Street. The destination will be on your left in 246'.

Address: 1007 Maple Street, Cleveland, MS 38732

[Google Maps Link](#)

**TRACEY  
BELL**

MANAGING BROKER

Office: 662.441.2500

Cell: 662.719.4720

Tracey@TomSmithLand.com



Expect More. Get More.

**A Real Estate Expert You Can Trust**

TomSmithLandandHomes.com

Information is believed to be accurate but not guaranteed.

