

RECREATIONAL HUNTING TRACT

49+/- Surveyed Acres in Scott County, MS



\$150,000

Are you looking for a property in the country that is still close to town? This 49+/- acre tract in Scott County, MS, is worth a look. Approximately 27+/- acres feature pine timber and hardwood bottoms, while the remaining area was cut about four years ago and has since been re-seeded with pines. A small pond is also located at the back of the property, adding to its charm. Whether you're interested in hunting, recreation, or building your dream home, this property has plenty of potential. It has over 500 feet of road frontage on North Little River Road and 300 feet on Hwy 35, with all utilities available. Conveniently located just 10 minutes from Forest, 20 minutes from Carthage, and 50 minutes from Jackson, MS, it offers the perfect balance of accessibility and privacy. Schedule your private showing today by calling or texting Walker Trnum!



**WALKER
TRANUM**
REALTOR®

Office: 662.268.6333

Cell: 662.769.1442

Walker@TomSmithHomes.com



Expect More. Get More.

A Real Estate Expert You Can Trust

TomSmithLandandHomes.com

Information is believed to be accurate but not guaranteed.





A Real Estate Expert *You Can Trust!*

WALKER TRANUM
REALTOR®

O: 662.268.6333 C: 662.769.1442

Walker@TomSmithHomes.com

TomSmithLandandHomes.com



Expect More. Get More.



Information is believed to be accurate but not guaranteed

Aerial Map



[Interactive Link](#)

A Real Estate Expert
You Can Trust!

WALKER TRANUM
REALTOR®

O: 662.268.6333 C: 662.769.1442

Walker@TomSmithHomes.com

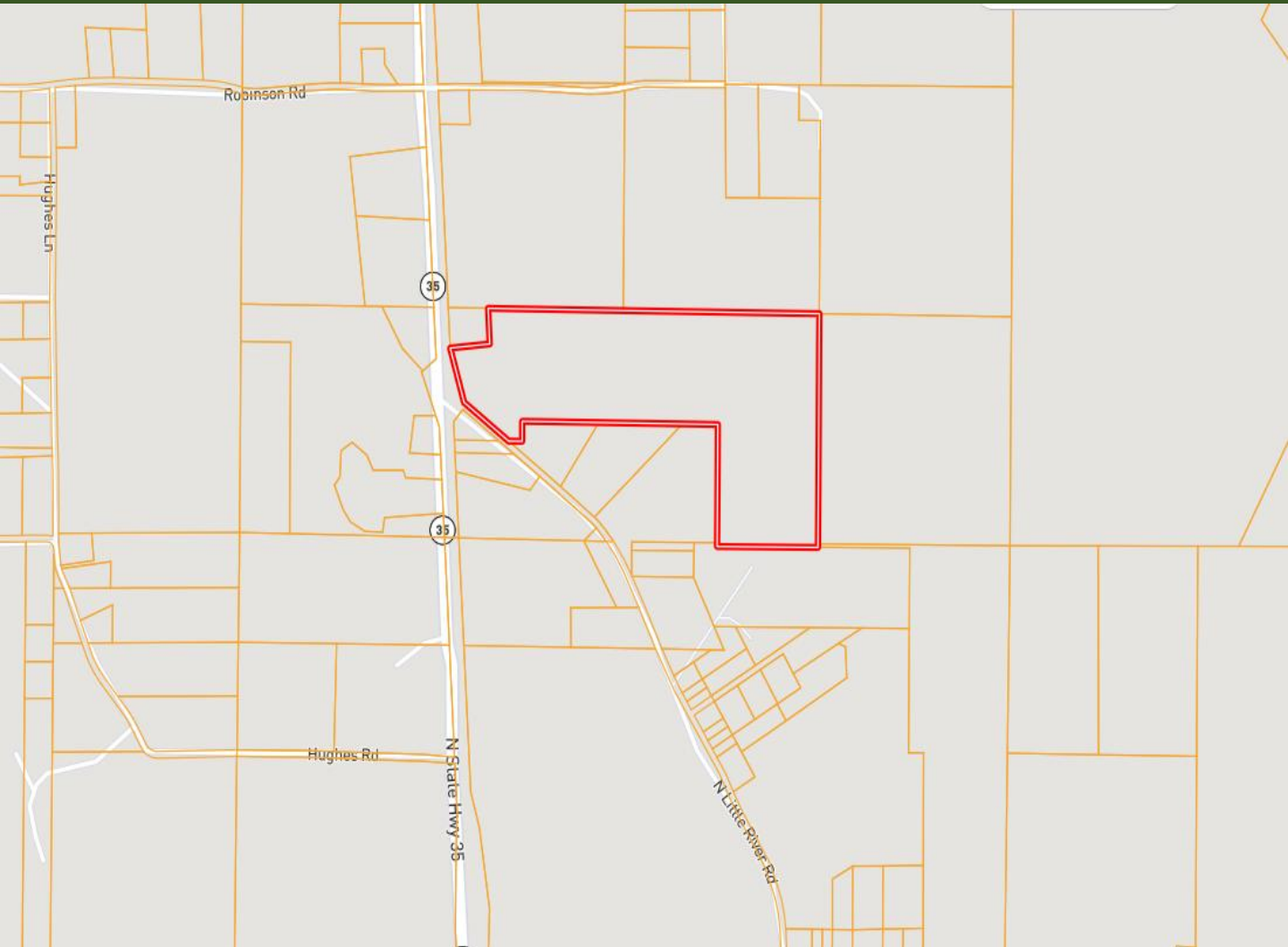
TomSmithLandandHomes.com



Expect More. Get More.



Ownership Map



A Real Estate Expert
You Can Trust!

WALKER TRANUM
REALTOR®

O: 662.268.6333 C: 662.769.1442

Walker@TomSmithHomes.com

TomSmithLandandHomes.com

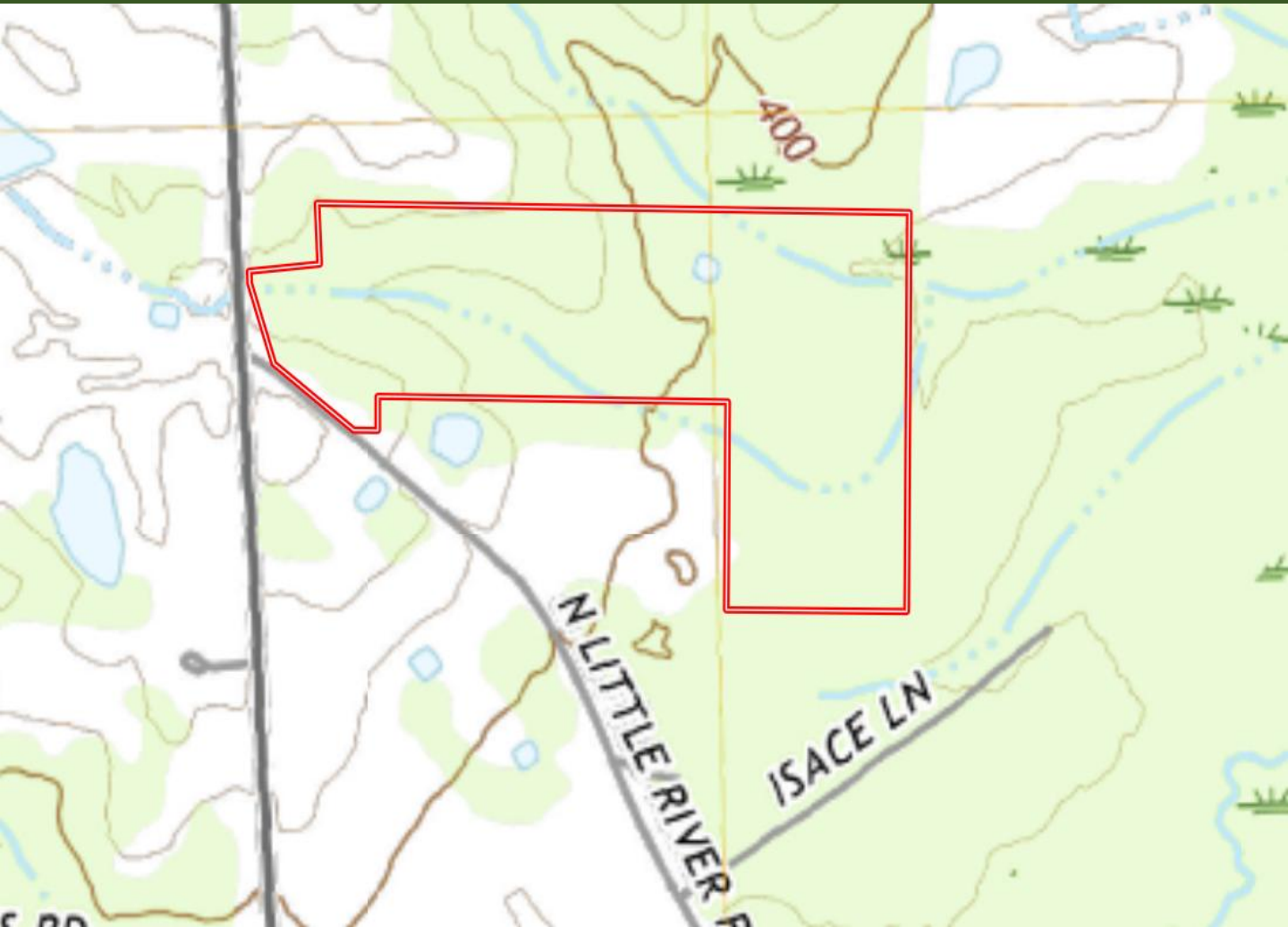


Expect More. Get More.



Information is believed to be accurate but not guaranteed.

Topo Map



A Real Estate Expert
You Can Trust!

WALKER TRANUM
REALTOR®

O: 662.268.6333 C: 662.769.1442

Walker@TomSmithHomes.com

TomSmithLandandHomes.com

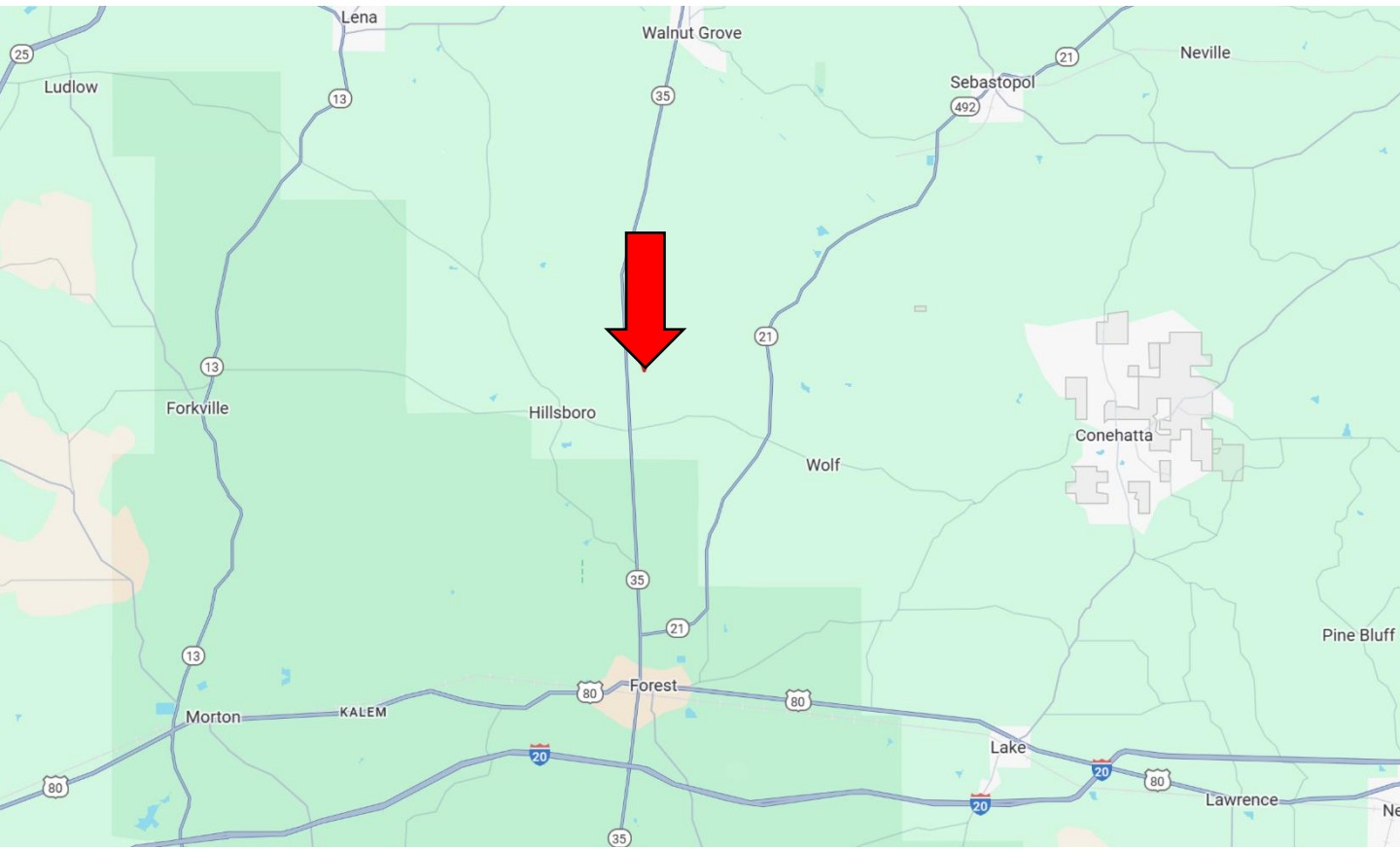


Expect More. Get More.



Information is believed to be accurate but not guaranteed.

Directional Map



Directions from I-20 and Hwy 35 in Forest, MS: Take exit 88 towards Forest. Turn onto Hwy 35N and travel 9.6 miles. Turn right onto N Little River Road. After 0.3 miles, the property will be on left.

[GOOGLE MAP LINK](#)



**WALKER
TRANUM**
REALTOR®

Office: 662.268.6333

Cell: 662.769.1442

Walker@TomSmithHomes.com



Expect More. Get More.

A Real Estate Expert You Can Trust

TomSmithLandandHomes.com

Information is believed to be accurate but not guaranteed.

