



DREAM HOME SITE

2.5± ACRES IN SIMPSON COUNTY, MS • \$29,875



Are you looking for the perfect spot to build your dream home or cabin? This 2.5± acre lakefront property in Simpson County offers stunning views and partial lake ownership. Conveniently located just 9 miles from Florence and 30 minutes from Mendenhall, this tranquil setting is ideal for creating your private retreat. Don't miss this unique opportunity! Call Chad today to schedule your tour!



**CHAD
WILSON**

REALTOR®

Office: 601.898.2772

Cell: 601.750.1970

Chad@TomSmithLand.com



Expect More. Get More.

A Real Estate Expert You Can Trust

TomSmithLandandHomes.com

Information is believed to be accurate but not guaranteed.





A Real Estate Expert *You Can Trust!*

CHAD WILSON
REALTOR®

O: 601.898.2772 C: 601.750.1970

Chad@TomSmithLand.com

TomSmithLandandHomes.com



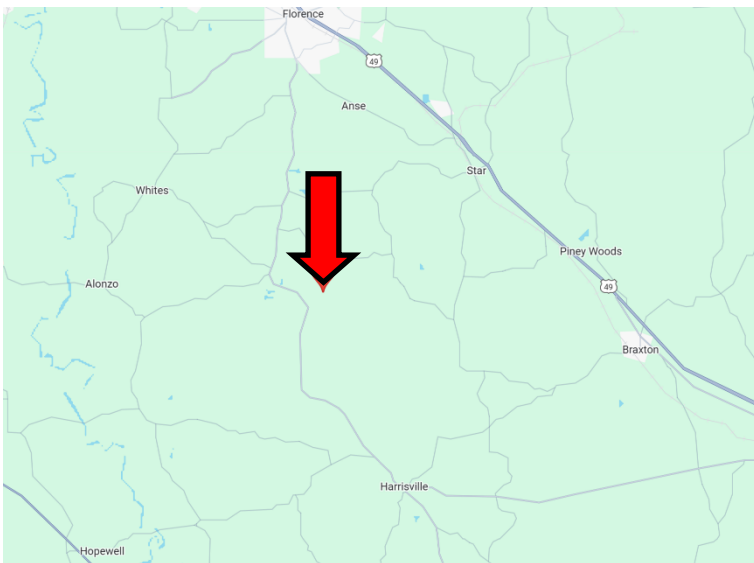
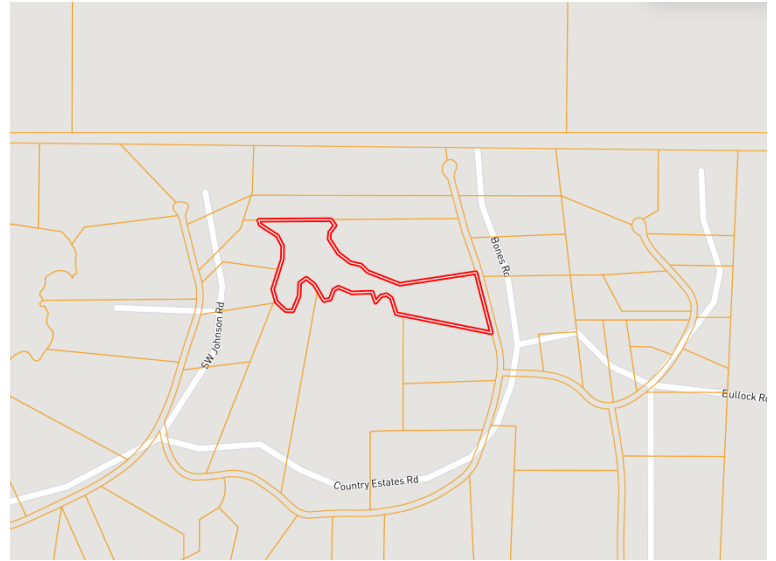
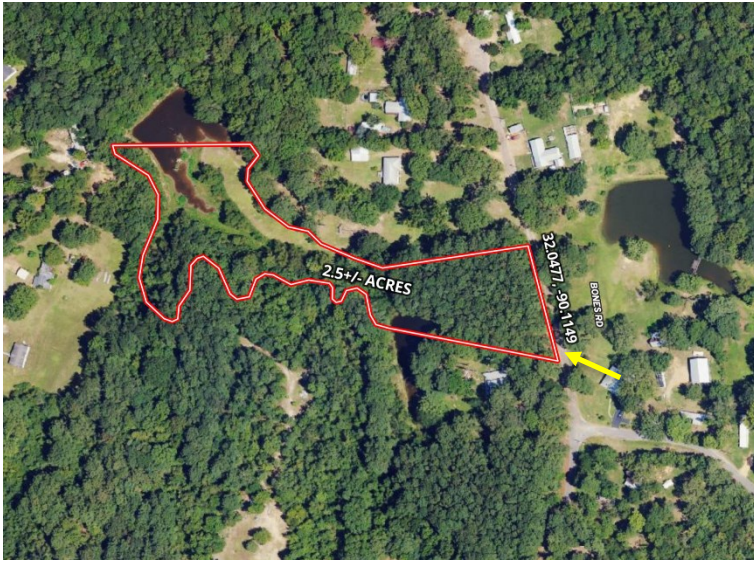
Expect More. Get More.



Information is believed to be accurate but not guaranteed.

MAPS

[Click Here for the LandID Interactive Map Link](#)



Directions from Hwy 49 and Hwy 469 in Florence, MS: Turn on Hwy 469 and travel 0.5 miles. Turn left onto Hwy 469 and travel 8.3 miles. Turn left onto Country Estates Rd. and travel 0.4 miles. Turn right to stay on Country Estates Rd. and travel 0.4 miles. Continue onto Bones Rd. After 210 feet, the property will be on the left.

[Google Map Link](#)



CHAD WILSON
REALTOR®

Office: 601.898.2772
Cell: 601.750.1970
Chad@TomSmithLand.com



Expect More. Get More.

A Real Estate Expert You Can Trust

TomSmithLandandHomes.com

Information is believed to be accurate but not guaranteed.

