

ELEGANT LIVING IN CLARKSDALE

Spacious 4-Bedroom Home on a
0.82± Acre Lot in Coahoma County, MS



340 Porter Drive Clarksdale, MS 38614

\$330,000

Welcome to your dream home in Coahoma County. The impressive 3,300-square-foot home was built in 1997 and features four bedrooms and two bathrooms on a spacious 0.82-acre lot—perfect for families and entertaining. The heart of the house is the generously sized kitchen, complete with stainless steel appliances, abundant cabinetry, and room for dining. Just off the kitchen, a convenient laundry room adds practicality to your daily routine. The primary suite provides a luxurious retreat featuring double sinks, a jetted tub, and a walk-in shower with dual shower heads for a spa-like experience. The oversized walk-in closet offers plenty of space for all your belongings. Outside, the large yard invites relaxation, play, or the chance to bring your landscaping ideas to life. Don't miss the opportunity to make this exceptional property yours! Schedule a showing today to experience everything 340 Porter Dr has to offer.



**ANTHONY
STEEN**
REALTOR®
Office: 662.441.2500
Cell: 662.645.5151
Anthony@TomSmithLand.com



A Real Estate Expert You Can Trust
TomSmithLandandHomes.com

Information is believed to be accurate but not guaranteed.





A Real Estate Expert
You Can Trust!

ANTHONY STEEN
REALTOR®

O: 662.441.2500 C: 662.645.5151

Anthony@TomSmithLand.com

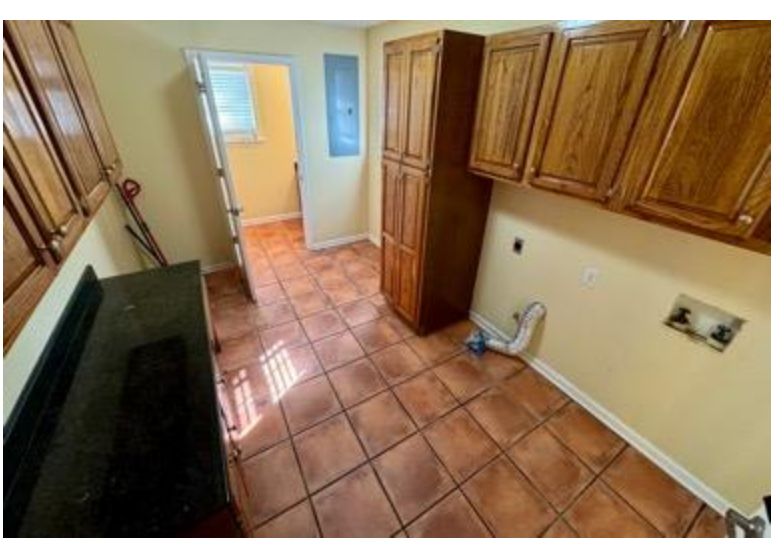
TomSmithLandandHomes.com



Expect More. Get More.



Information is believed to be accurate but not guaranteed.



A Real Estate Expert
You Can Trust!

ANTHONY STEEN
REALTOR®

O: 662.441.2500 C: 662.645.5151

Anthony@TomSmithLand.com

TomSmithLandandHomes.com

**Tom
Smith
LAND AND
HOMES**

Expect More. Get More.

2011-2024
**BEST
FRANCHISES**

Information is believed to be accurate but not guaranteed.



A Real Estate Expert
You Can Trust!

ANTHONY STEEN
REALTOR®

O: 662.441.2500 C: 662.645.5151

Anthony@TomSmithLand.com

TomSmithLandandHomes.com



Expect More. Get More.



Information is believed to be accurate but not guaranteed.



A Real Estate Expert
You Can Trust!

ANTHONY STEEN
REALTOR®

O: 662.441.2500 C: 662.645.5151

Anthony@TomSmithLand.com

TomSmithLandandHomes.com



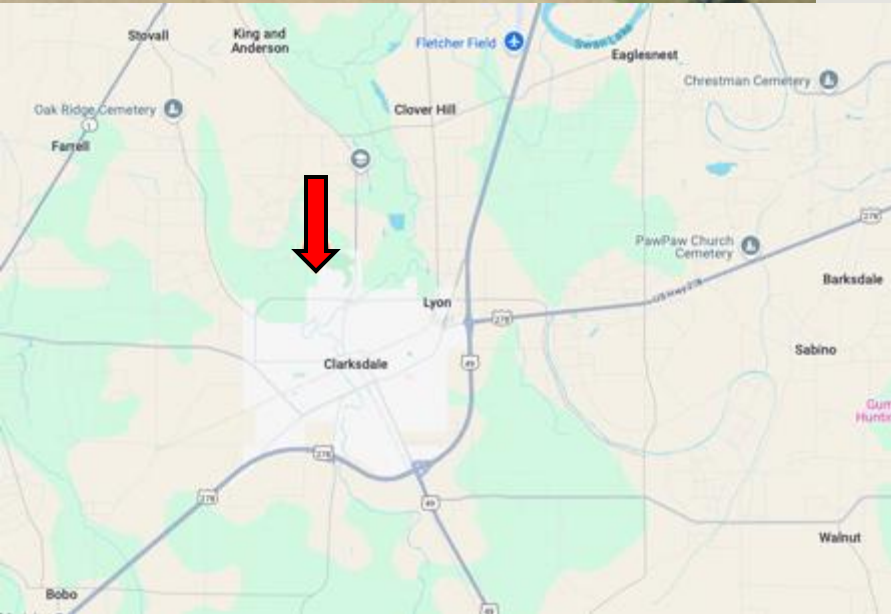
Expect More. Get More.



Information is believed to be accurate but not guaranteed.

MAPS

[Click for the Interactive Map](#)



Address: 340 Porter Drive Clarksdale, MS
38614

Directions from US-61 & US 49 in Clarksdale,

MS: Take the exit off Hwy 49 toward Clarksdale. Merge onto Desoto Ave. and travel 3.4 miles. Turn left onto E Lee Dr. and travel 0.2 miles. Continue straight onto Westover Dr. for 0.6 miles. Turn left onto Porter Dr. After 0.6 miles, the house will be on the left.

[Google Map Link](#)



**ANTHONY
STEEN**

REALTOR®

Office: 662.441.2500

Cell: 662.645.5151

Anthony@TomSmithLand.com



Expect More. Get More.

A Real Estate Expert You Can Trust

TomSmithLandandHomes.com

Information is believed to be accurate but not guaranteed.

