

437 Sunrise Drive, Cleveland, MS 38732

Charming Home on 1.09± Acres in Bolivar County, MS | \$144,900



This charming brick home in Bolivar County, MS, is on a generous 1.09± acre lot and offers 1,851± square feet of well-designed living space. Upon entering, you'll find a formal dining room seamlessly transitioning into a spacious living room and a functional kitchen. Just off the kitchen is a laundry room with plenty of storage, ensuring convenience and organization. Each bedroom features roomy closets, providing plenty of storage options. Step outside to the large backyard with a shed, a dog kennel, and plenty of space to create your ideal outdoor retreat. Call Charlie Heinsz today to schedule your private showing!



**CHARLIE
HEINSZ**

REALTOR®

Office: 662.441.2500

Cell: 662.719.7218

Charlie@TomSmithLand.com

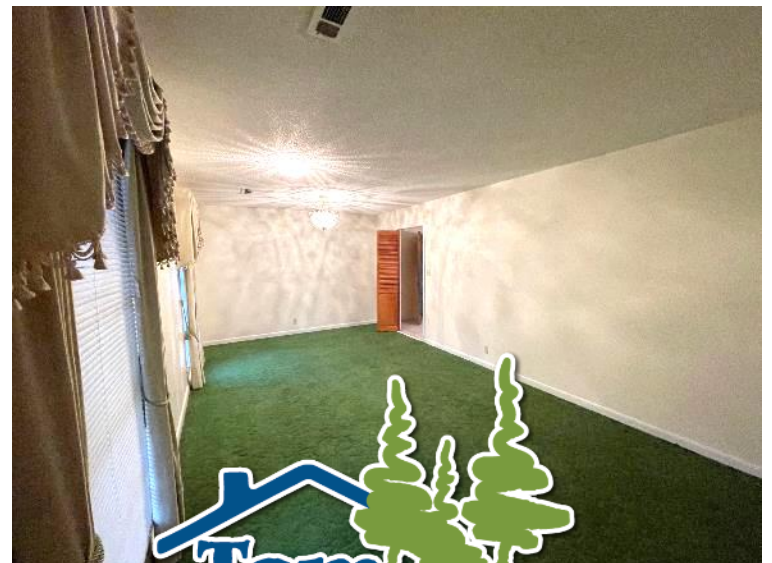


A Real Estate Expert You Can Trust

TomSmithLandandHomes.com

Information is believed to be accurate but not guaranteed.





CHARLIE HEINSZ
REALTOR®

Office: 662.441.2500

Cell: 662.719.7218

Charlie@TomSmithLand.com



A Real Estate Expert You Can Trust
TomSmithLandandHomes.com

Information is believed to be accurate but not guaranteed.





CHARLIE HEINSZ
REALTOR®

Office: 662.441.2500

Cell: 662.719.7218

Charlie@TomSmithLand.com



A Real Estate Expert You Can Trust
TomSmithLandandHomes.com

Information is believed to be accurate but not guaranteed.





CHARLIE HEINSZ
 REALTOR®
 Office: 662.441.2500
 Cell: 662.719.7218
 Charlie@TomSmithLand.com

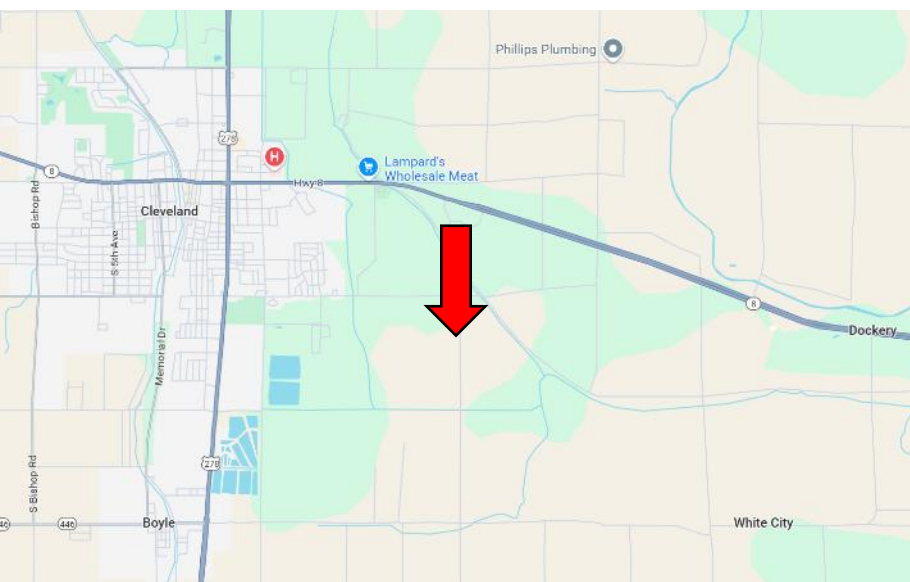
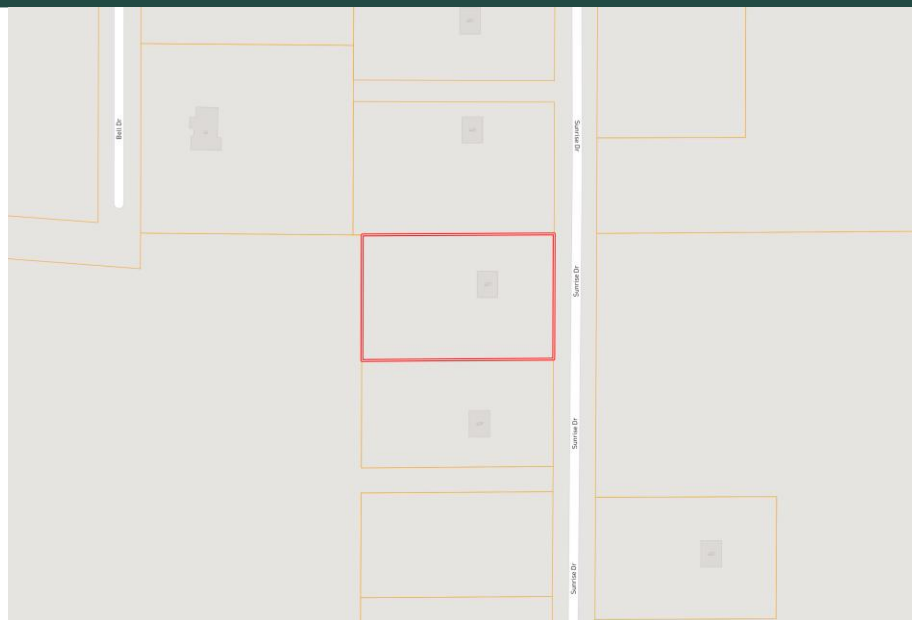
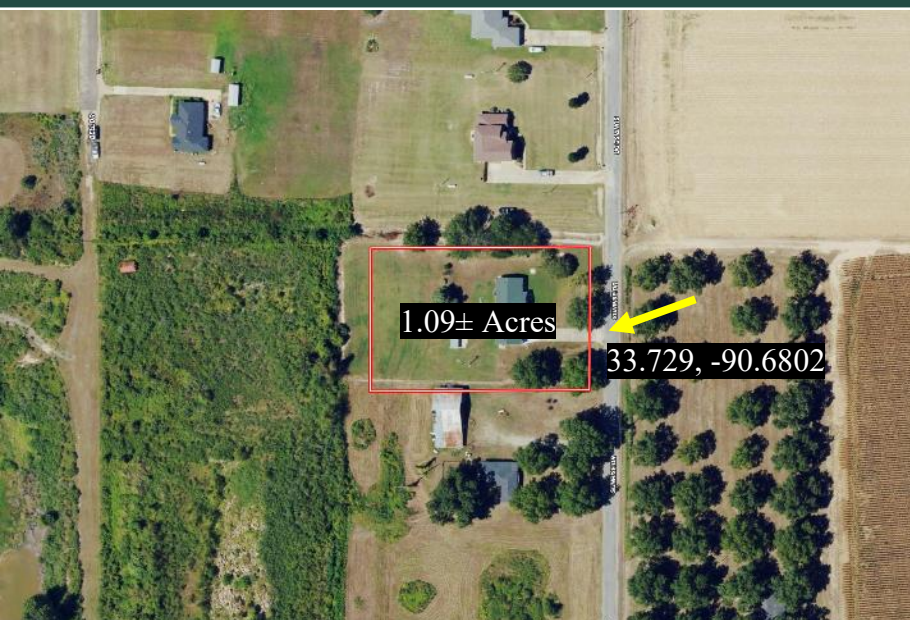


A Real Estate Expert You Can Trust
 TomSmithLandandHomes.com

Information is believed to be accurate but not guaranteed.



MAPS | [Click for Interactive Map](#)



**Address: 437 Sunrise Drive,
Cleveland, MS 38732**

Directions from Hwy 8 & Hwy 61 in Cleveland, MS: Travel east on HWY 61 for 1.4 miles. Turn right onto Old Ruleville Road and travel 1.3 miles. Turn right onto White Street and travel 0.2 miles. Turn left onto Sunrise Drive. After 0.3 miles, the home will be your right. [Click for Google Maps.](#)



**CHARLIE
HEINSZ**

REALTOR®

Office: 662.441.2500

Cell: 662.719.7218

Charlie@TomSmithLand.com



A Real Estate Expert You Can Trust

TomSmithLandandHomes.com

Information is believed to be accurate but not guaranteed.

