

# .01± ACRE LOT IN THE BROWNING CREEK SUBDIVISION OF OKTIBBEHA COUNTY, MS



## \$16,500

Are you looking to build your getaway in one of the most sought-after neighborhoods in Starkville, MS? Here's your chance! This .01+/- acre lot is one of the last lots remaining in The Retreats in the Browning Creek subdivision of Oktibbeha County. The Retreat lots offer an affordable price to live in this private neighborhood. It also provides ready-to-use utilities and fiber optic internet. Browning Creek also allows exclusive access to a large private lake stocked with trophy bass, bream, crappie, and striped bass. If you are looking for a homesite with great neighbors and privacy, look no further! To schedule a private showing, call or text Walker!



**WALKER  
TRANUM**  
REALTOR®

Office: 662.268.6333

Cell: 662.769.1442

Walker@TomSmithHomes.com



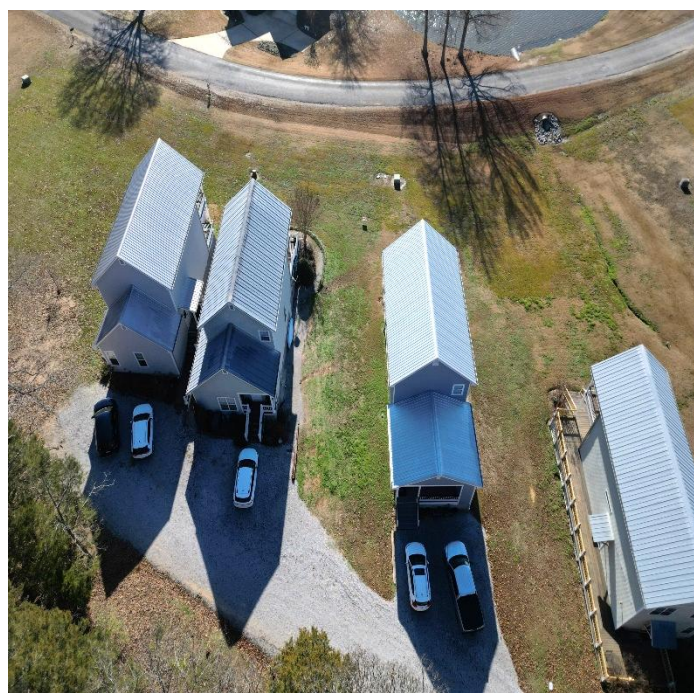
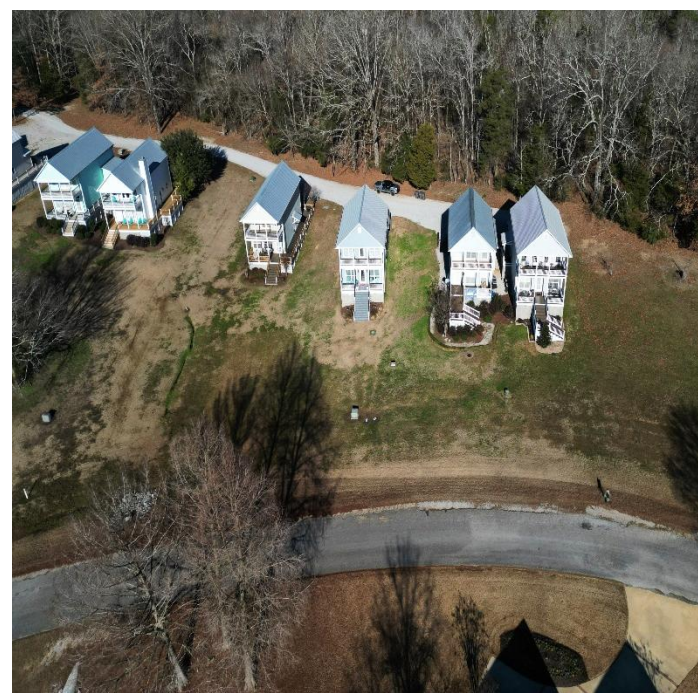
Expect More. Get More.

**A Real Estate Expert You Can Trust**

TomSmithLandandHomes.com

Information is believed to be accurate but not guaranteed.





# A Real Estate Expert *You Can Trust!*

**WALKER TRANUM**  
REALTOR®  
O: 662.268.6333 C: 662.769.1442  
Walker@TomSmithHomes.com  
TomSmithLandandHomes.com



Expect More. Get More.



Information is believed to be accurate but not guaranteed.

# Aerial Map



Click [Here](#) for the Interactive Map Link

A Real Estate Expert  
*You Can Trust!*

**WALKER TRANUM**  
REALTOR®

O: 662.268.6333 C: 662.769.1442

Walker@TomSmithHomes.com

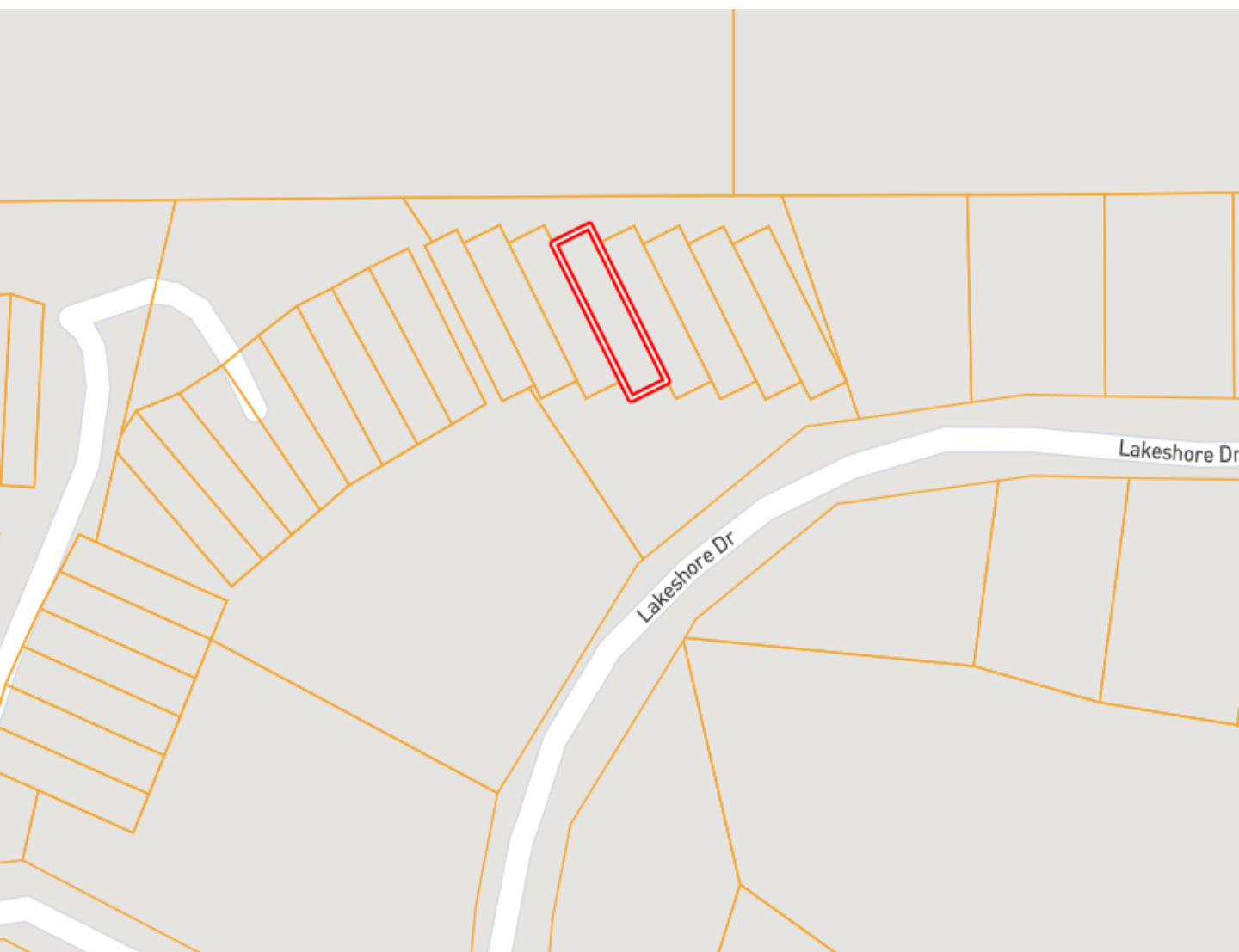
TomSmithLandandHomes.com



Expect More. Get More.



# Ownership Map



**A Real Estate Expert**  
*You Can Trust!*

**WALKER TRANUM**

REALTOR®

O: 662.268.6333 C: 662.769.1442

Walker@TomSmithHomes.com

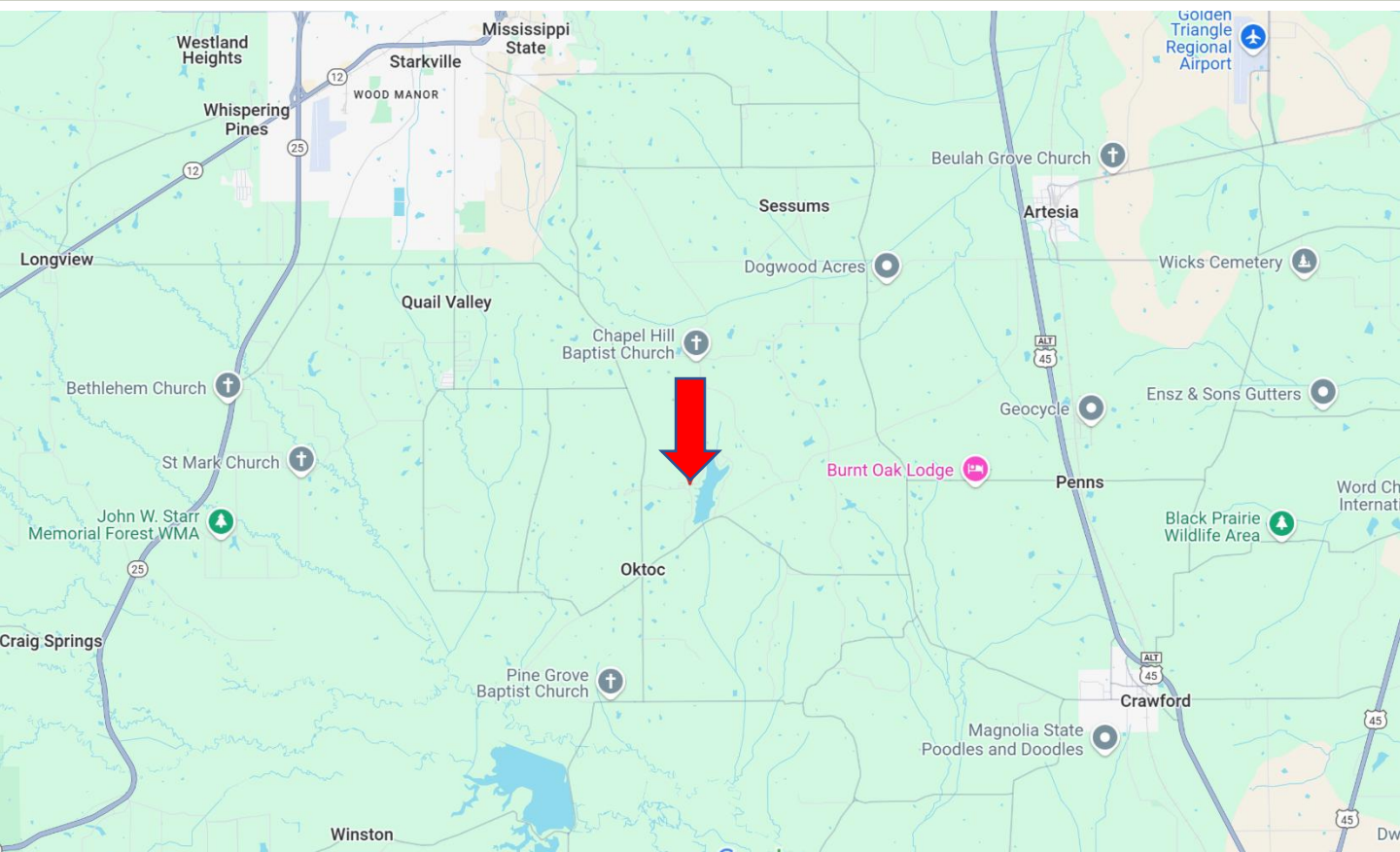
TomSmithLandandHomes.com



Expect More. Get More.



# Directional Map



**Directions from Hwy 12 and Blackjack Road in Starkville, MS:** Travel south on Blackjack Road for 1 mile. At the traffic circle, take the first exit onto Oktoc Road and travel 7.4 miles. Turn onto Browning Creek Road and travel 0.7 miles. Turn left onto Lucy Lane and travel 450 feet. Turn right onto Misty Meadows Drive. After 0.2 miles, the property will be on your right.

[Google Map Link](#)



**WALKER  
TRANUM**

REALTOR®

Office: 662.268.6333

Cell: 662.769.1442

Walker@TomSmithHomes.com



Expect More. Get More.

**A Real Estate Expert You Can Trust**

TomSmithLandandHomes.com

Information is believed to be accurate but not guaranteed.

