

BUILD YOUR DREAM HOME!

1.06± ACRE LOT IN RANKIN COUNTY

116 Marsman Rd, Brandon, MS 39047



\$75,000

This 1.06± acre lot in Rankin County is located at 116 Marsman Rd, Brandon, MS, and offers excellent potential! The property features a spacious 1,500-square-foot drive-through workshop, ideal for various uses such as projects, storage, or working on vehicles. With drive-through access, it's designed for convenience and functionality. Marsman Road is just off Highway 471, making this property an ideal location in the heart of Rankin County. It also provides easy access to Downtown Brandon and the numerous attractions and amenities off Lakeland Drive. A single-wide mobile home (of no value) sits on the east side of the property, leaving you with a blank slate to create your vision in the Northwest Rankin School District. Schedule your tour today to explore the possibilities of this Rankin County gem! Don't wait—contact Dale or David to see it for yourself!



DALE WILDS
REALTOR®

O: 601.898.2772 | C: 662.715.7109
Dale@TomSmithLand.com



Expect More. Get More.



DAVID BELDEN
ALC®, REALTOR®

O: 601.898.2772 | C: 601.415.3884
DBelden@TomSmithLand.com

TomSmithLandandHomes.com

Information is believed to be accurate but not guaranteed.





DALE WILDS
REALTOR®

O: 601.898.2772 | C: 662.715.7109
Dale@TomSmithLand.com



DAVID BELDEN
ALC®, REALTOR®

O: 601.898.2772 | C: 601.415.3884
DBelden@TomSmithLand.com

TomSmithLandandHomes.com

Information is believed to be accurate but not guaranteed.



AERIAL MAP



[CLICK HERE FOR THE LANDID INTERACTIVE MAP](#)

DALE WILDS
REALTOR®

O: 601.898.2772 | C: 662.715.7109
Dale@TomSmithLand.com



DAVID BELDEN
ALC®, REALTOR®

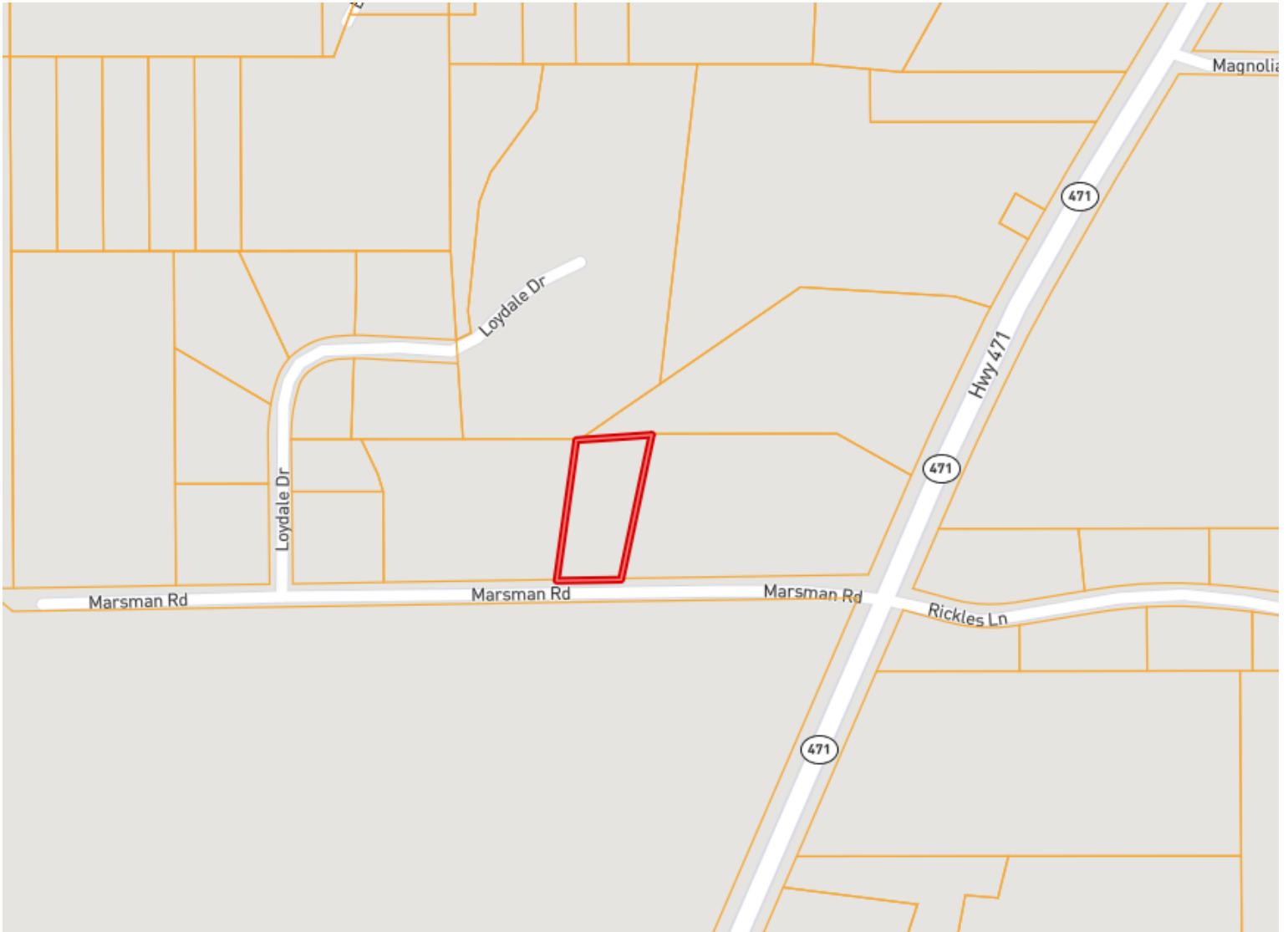
O: 601.898.2772 | C: 601.415.3884
DBelden@TomSmithLand.com

TomSmithLandandHomes.com

Information is believed to be accurate but not guaranteed.



OWNERSHIP MAP



DALE WILDS
REALTOR®

O: 601.898.2772 | C: 662.715.7109
Dale@TomSmithLand.com



DAVID BELDEN
ALC®, REALTOR®

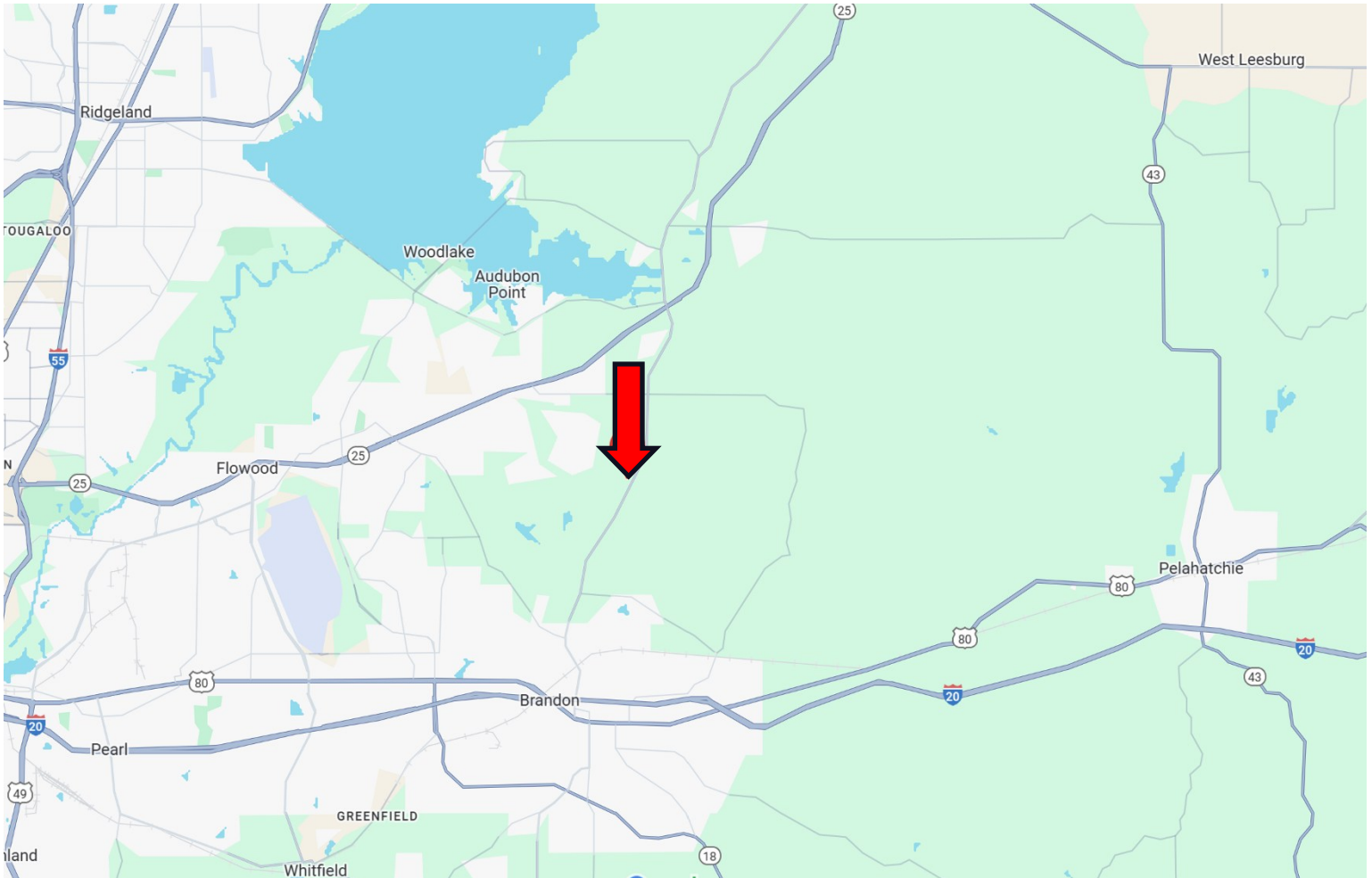
O: 601.898.2772 | C: 601.415.3884
DBelden@TomSmithLand.com

TomSmithLandandHomes.com

Information is believed to be accurate but not guaranteed.



DIRECTIONAL MAP



Directions from the intersection of Highway 25 and MS-471: Travel South on MS-471 for 3.1 miles. Turn right onto Marsman Rd. After 600 feet, the property will be on the right.

[GOOGLE MAP LINK](#)



DALE WILDS
REALTOR®

O: 601.898.2772 | C: 662.715.7109
Dale@TomSmithLand.com



Expect More. Get More.



DAVID BELDEN
ALC®, REALTOR®

O: 601.898.2772 | C: 601.415.3884
DBelden@TomSmithLand.com

TomSmithLandandHomes.com

Information is believed to be accurate but not guaranteed.

