

Bolivar County Duplex

510 Murphy St, Cleveland, MS 38732 | \$89,000



This duplex is for sale at 510 Murphy Street in Cleveland, Bolivar County, MS, and features two bedrooms and one full bathroom in each unit. It currently generates a monthly income of \$850 per unit, totaling \$1,700 monthly. With an asking price of \$89,000, this property presents an excellent investment opportunity. Don't miss out on this fantastic chance to invest!



**ANTHONY
STEEN**

REALTOR®

Office: 601.898.2772

Cell: 662.645.5151

Anthony@TomSmithLand.com



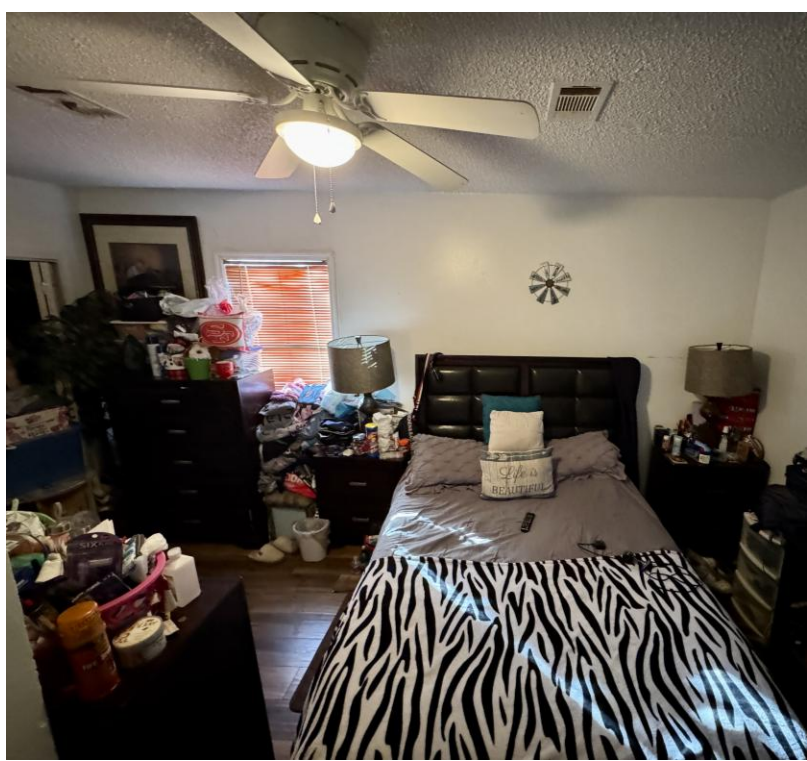
Expect More. Get More.

A Real Estate Expert You Can Trust

TomSmithLandandHomes.com

Information is believed to be accurate but not guaranteed.

LandReport
2011-2024
BEST
BROKERAGES

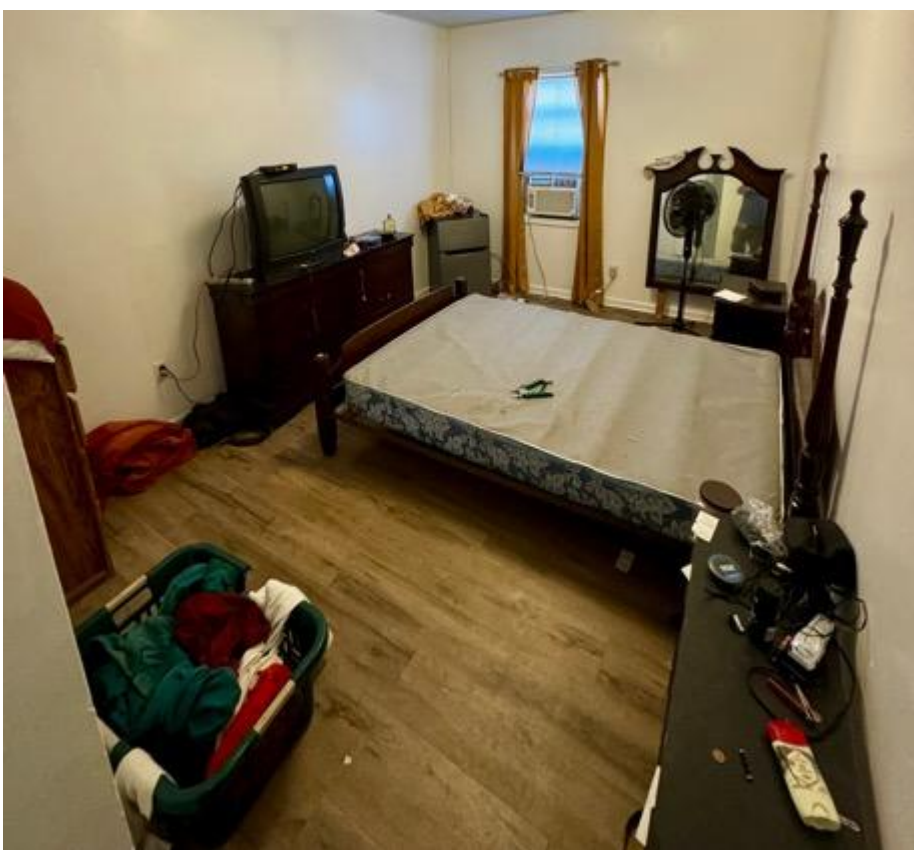


A Real Estate Expert *You Can Trust!*

ANTHONY STEEN
REALTOR®
O: 601.898.2772 C: 662.645.5151
Anthony@TomSmithLand.com
TomSmithLandandHomes.com



Information is believed to be accurate but not guaranteed.



A Real Estate Expert *You Can Trust!*

ANTHONY STEEN
REALTOR®
O: 601.898.2772 C: 662.645.5151
Anthony@TomSmithLand.com
TomSmithLandandHomes.com

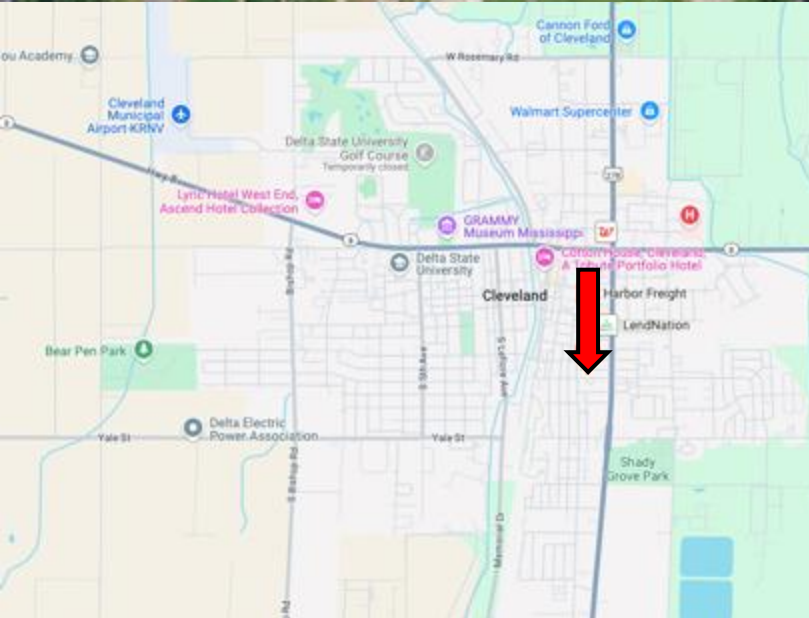
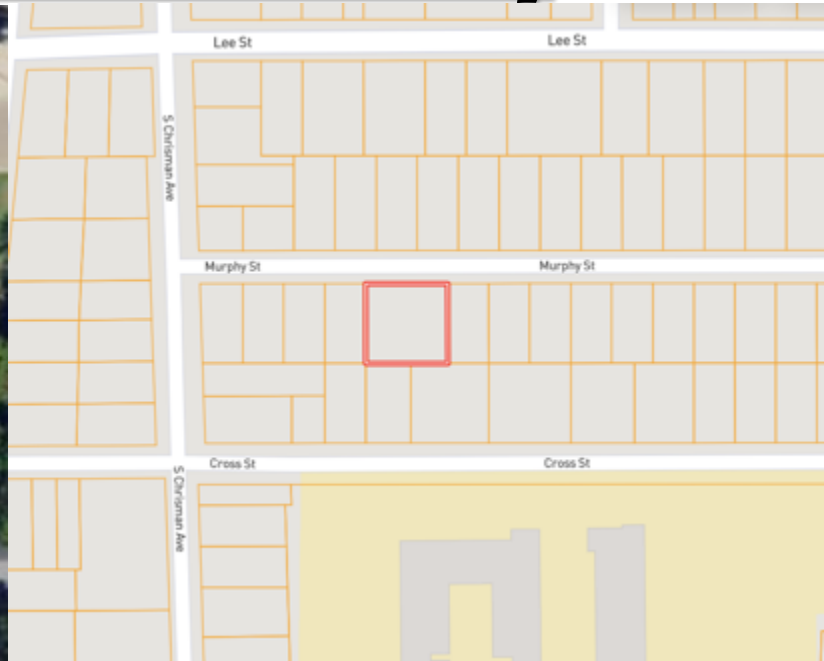


Expect More. Get More.

Information is believed to be accurate but not guaranteed.



MAPS | [Click for the Interactive Map](#)



Address: 510 Murphy St, Cleveland, MS 38732

Directions from US-61 & MS-8 in Cleveland,

MS: Travel south on N Davis Ave. for 0.6 miles. Turn right onto Murphy St. After 0.1 miles, the duplex will be on the left.

[Google Map Link](#)



**ANTHONY
STEEN**

REALTOR®

Office: 601.898.2772

Cell: 662.645.5151

Anthony@TomSmithLand.com



Expect More. Get More.

A Real Estate Expert You Can Trust

TomSmithLandandHomes.com

Information is believed to be accurate but not guaranteed.

