

# Bolivar County Duplex

510 Murphy St, Cleveland, MS 38732 | \$99,000



This duplex is for sale at 510 Murphy Street in Cleveland, Bolivar County, MS, and features two bedrooms and one full bathroom in each unit. It currently generates a monthly income of \$850 per unit, totaling \$1,700 monthly. With an asking price of \$99,000, this property presents an excellent investment opportunity. Don't miss out on this fantastic chance to invest!



**ANTHONY  
STEEN**

REALTOR®

Office: 601.898.2772

Cell: 662.645.5151

Anthony@TomSmithLand.com



Expect More. Get More.

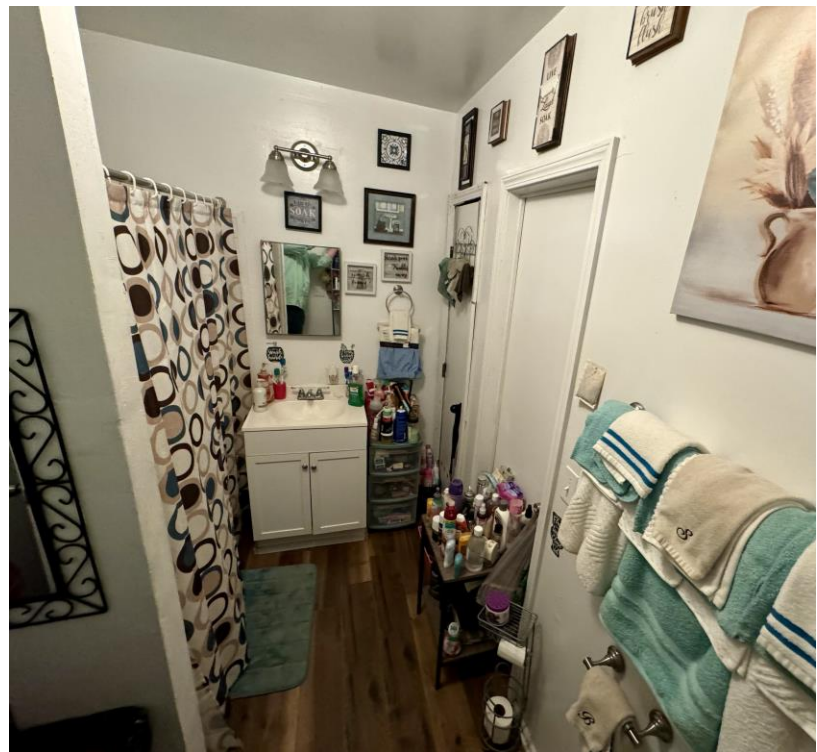
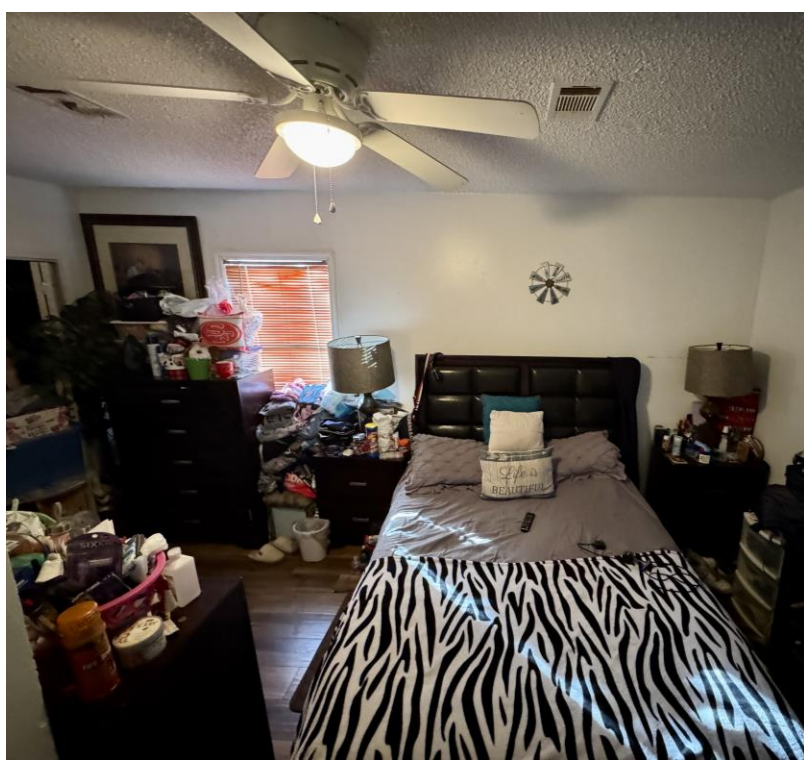
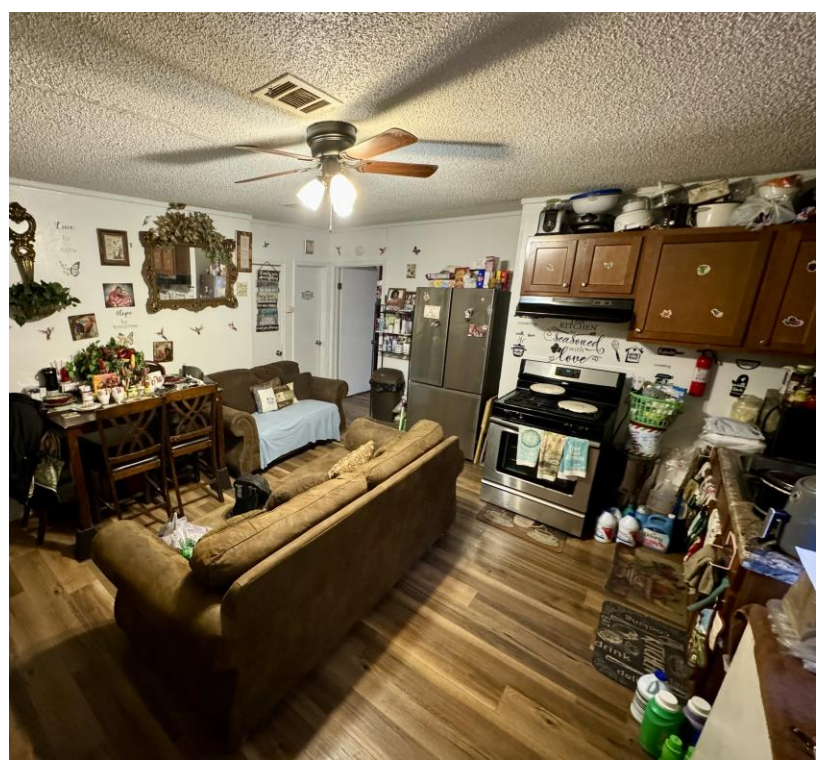
**A Real Estate Expert You Can Trust**

TomSmithLandandHomes.com

Information is believed to be accurate but not guaranteed.

LandReport  
2011-2024  
BEST  
BROKERAGES





## A Real Estate Expert You Can Trust!

**ANTHONY STEEN**  
REALTOR®  
O: 601.898.2772 C: 662.645.5151  
Anthony@TomSmithLand.com  
TomSmithLandandHomes.com

**Tom  
Smith  
LAND AND  
HOMES**  
Expect More. Get More.

LandReport  
2011-2024  
BEST  
BROKERAGES

Information is believed to be accurate but not guaranteed.





## A Real Estate Expert *You Can Trust!*

**ANTHONY STEEN**  
REALTOR®  
O: 601.898.2772 C: 662.645.5151  
Anthony@TomSmithLand.com  
TomSmithLandandHomes.com

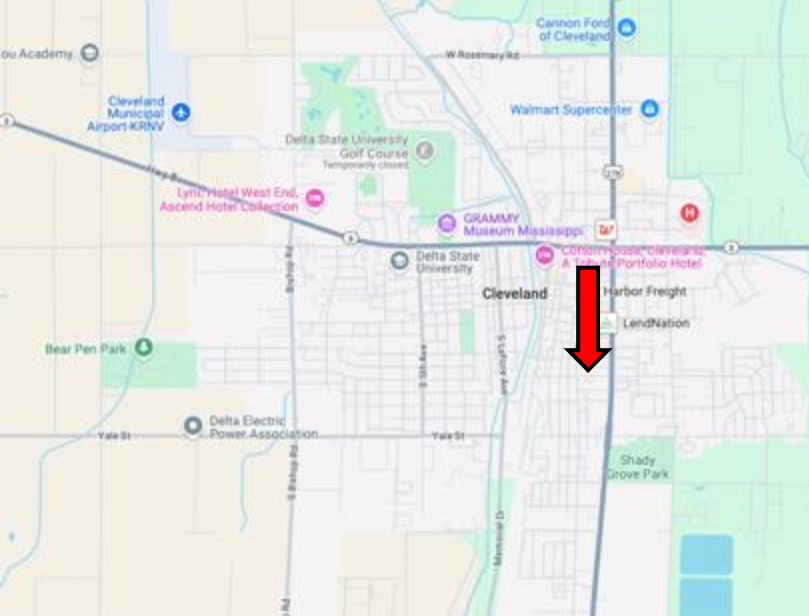
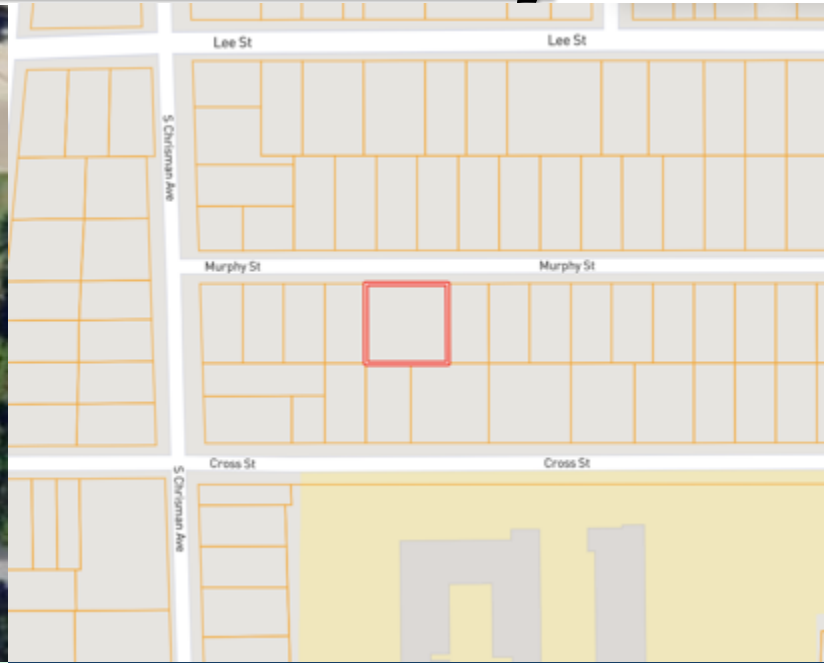
**Tom  
Smith  
LAND AND  
HOMES**

Expect More. Get More.





# MAPS | [Click for the Interactive Map](#)



**Address:** 510 Murphy St, Cleveland, MS 38732

**Directions from US-61 & MS-8 in Cleveland,**

**MS:** Travel south on N Davis Ave. for 0.6 miles. Turn right onto Murphy St. After 0.1 miles, the duplex will be on the left.

**[Google Map Link](#)**



**ANTHONY  
STEEN**

REALTOR®

Office: 601.898.2772

Cell: 662.645.5151

Anthony@TomSmithLand.com



Expect More. Get More.

**A Real Estate Expert You Can Trust**

TomSmithLandandHomes.com

Information is believed to be accurate but not guaranteed.

