

# Prime Hunting and Country Living Potential 10± Acres in Holmes County, MS



**\$50,000**

Seize the opportunity to own 10 ± acres in Holmes County, located along Monroe Meek Road with road frontage and easy access to Highway 17, just north of Lexington, MS. This property already has water, electricity, and road access, making it an ideal spot for a home or recreational getaway. Situated in prime deer hunting territory, this land is perfect for outdoor enthusiasts. Whether you're looking to create a hunting retreat, build a home, or secure your own slice of Mississippi, this property offers endless possibilities. Call KRISTY today to explore this Holmes County treasure!



**KRISTY  
INGOLD**  
REALTOR®

Office: 601.898.2772  
Cell: 662.792.9949  
Kristy@TomSmithLand.com



Expect More. Get More.

**A Real Estate Expert You Can Trust**

TomSmithLandandHomes.com

Information is believed to be accurate but not guaranteed.





# A Real Estate Expert *You Can Trust!*

**KRISTY INGOLD**  
REALTOR®

O: 601.898.2772 C: 662.792.9949

Kristy@TomSmithLand.com

TomSmithLandandHomes.com



Expect More. Get More.







# A Real Estate Expert *You Can Trust!*

**KRISTY INGOLD**  
REALTOR®

O: 601.898.2772 C: 662.792.9949

Kristy@TomSmithLand.com

TomSmithLandandHomes.com



Expect More. Get More.





# A Real Estate Expert *You Can Trust!*

**KRISTY INGOLD**  
REALTOR®

O: 601.898.2772 C: 662.792.9949  
Kristy@TomSmithLand.com  
TomSmithLandandHomes.com



Expect More. Get More.





# Aerial Map



[Click Here for a LandId Interactive Map Link](#)

**A Real Estate Expert**  
*You Can Trust!*

**KRISTY INGOLD**  
REALTOR®

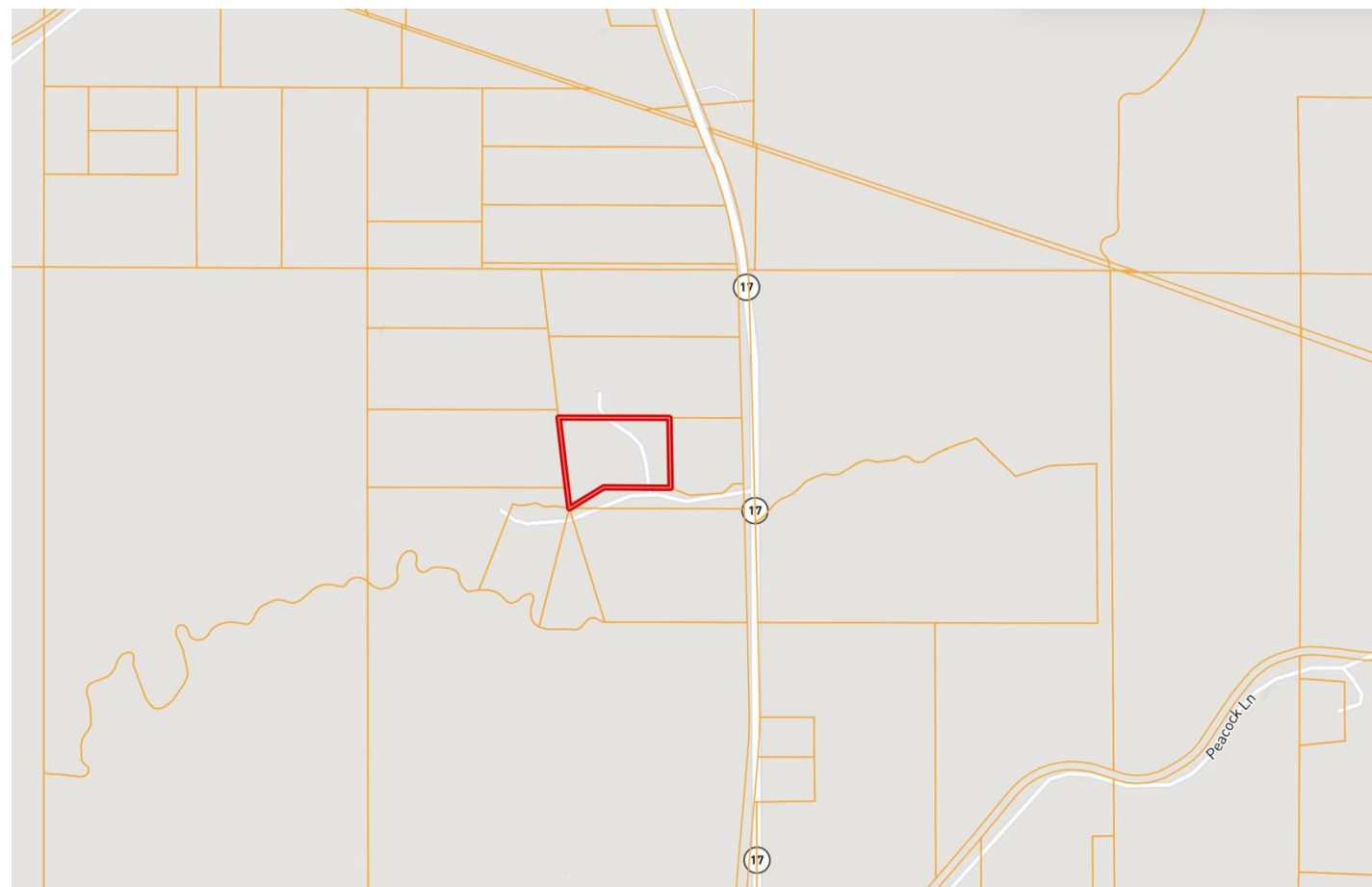
O: 601.898.2772 C: 662.792.9949

Kristy@TomSmithLand.com

TomSmithLandandHomes.com



# Ownership Map



**A Real Estate Expert**  
*You Can Trust!*

**KRISTY INGOLD**  
REALTOR®

O: 601.898.2772 C: 662.792.9949

Kristy@TomSmithLand.com

TomSmithLandandHomes.com

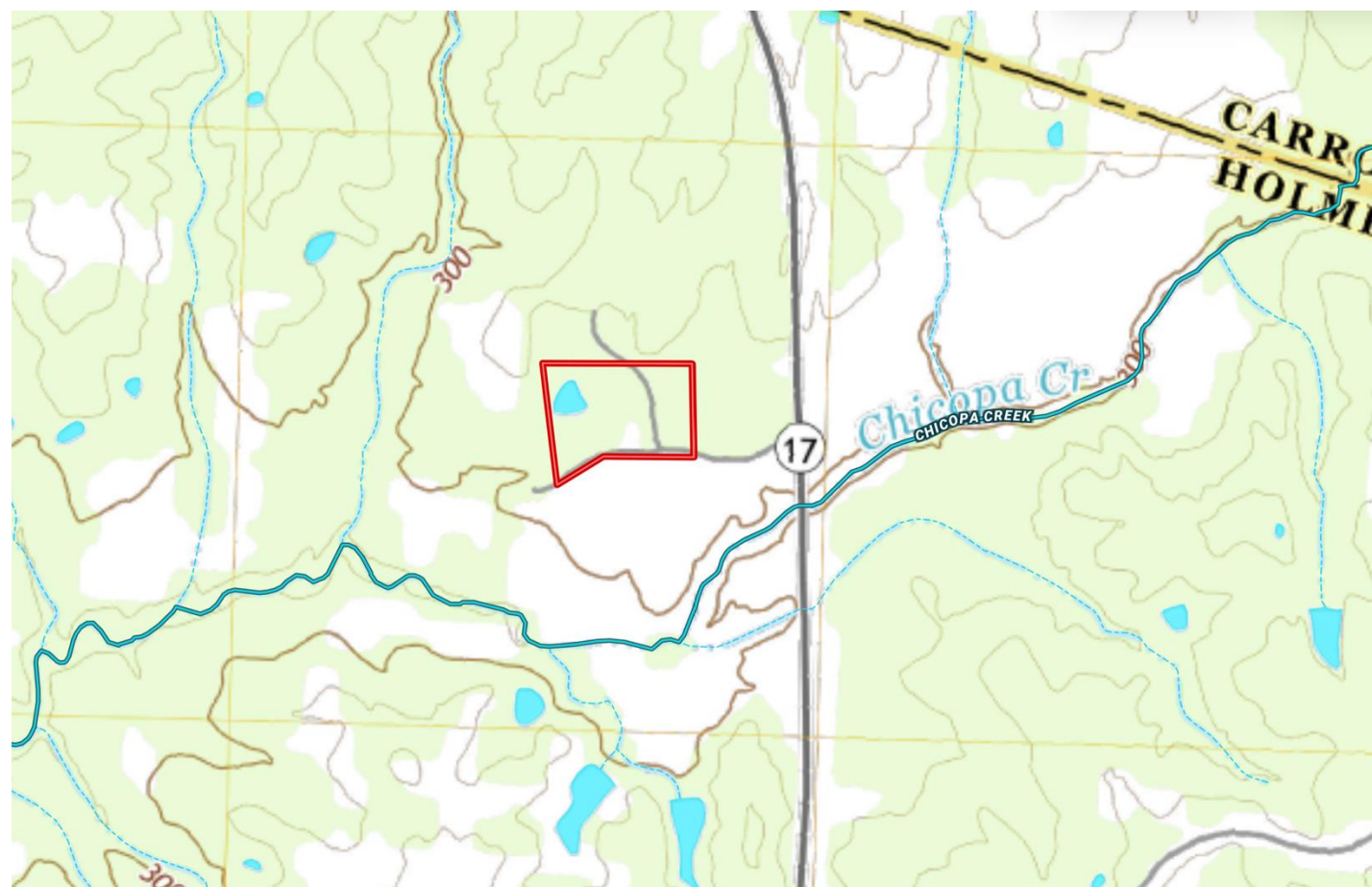


Expect More. Get More.





# Topography Map



**A Real Estate Expert**  
*You Can Trust!*

**KRISTY INGOLD**  
REALTOR®

O: 601.898.2772 C: 662.792.9949

Kristy@TomSmithLand.com

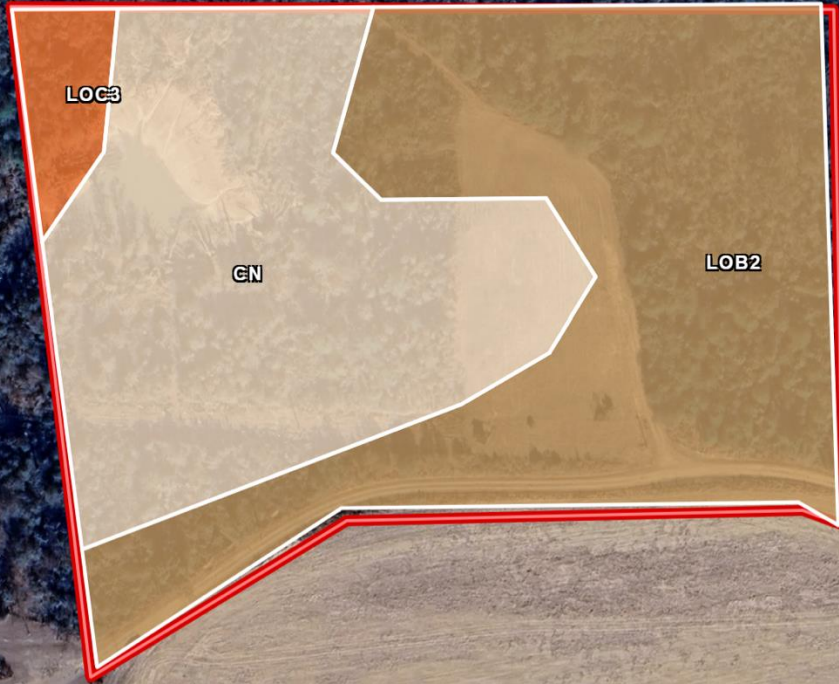
TomSmithLandandHomes.com



Expect More. Get More.



# Soil Map



SOIL CODE	SOIL DESCRIPTION	ACRES	%	CPI	NCCPI	CAP
LoB2	Loring silt loam, 2 to 5 percent slopes, moderately eroded, central	5.11	52.79	0	55	3e
Cn	Collins silt loam, occasionally flooded	4.19	43.29	0	86	2w
LoC3	Loring silt loam, 5 to 8 percent slopes, severely eroded, central	0.38	3.93	0	46	4e

**A Real Estate Expert**  
*You Can Trust!*



**KRISTY INGOLD**  
 REALTOR®

O: 601.898.2772 C: 662.792.9949

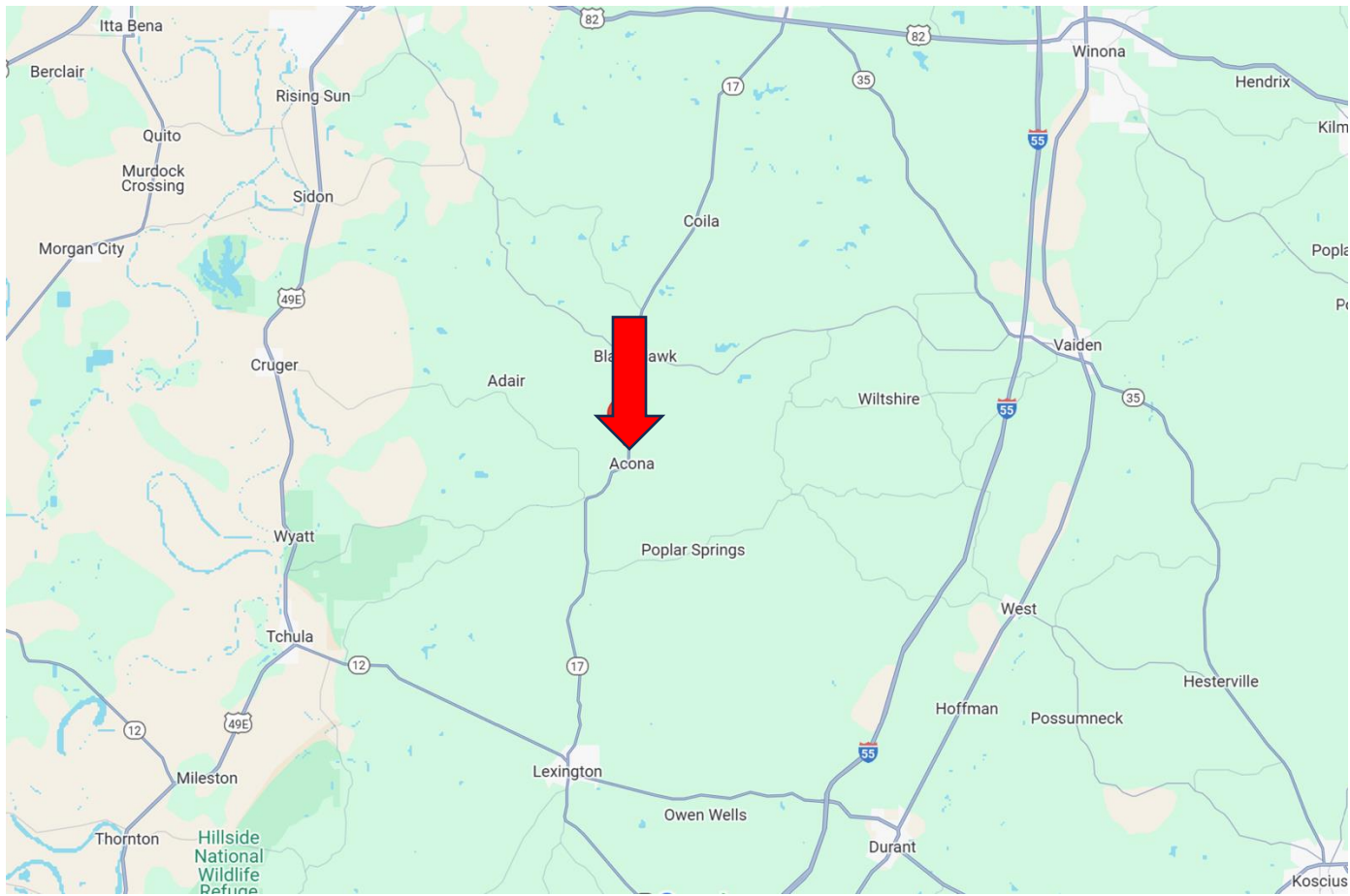
Kristy@TomSmithLand.com

TomSmithLandandHomes.com





# Directional Map



**Directions from the intersection of Hwy 12 and Hwy 17 in Lexington, MS:** Travel Hwy 17 N for 18 miles. Turn left onto Monroe Road. The property will be on your right.

[GOOGLE MAP LINK](#)



**KRISTY  
INGOLD**  
REALTOR®

Office: 601.898.2772  
Cell: 662.792.9949  
Kristy@TomSmithLand.com



Expect More. Get More.

**A Real Estate Expert You Can Trust**

TomSmithLandandHomes.com

Information is believed to be accurate but not guaranteed.

