

**CHARMING BRICK HOME ON 3.47± ACRES IN BOLIVAR COUNTY**  
**2907 HWY 8 W. Cleveland, MS 38732 | \$399,000**



Welcome to your new charming home in Bolivar County, MS! The brick house features three bedrooms, three full bathrooms, a spacious living area highlighted by stunning vaulted ceilings, and a cozy gas fireplace. The living room seamlessly connects to the kitchen, with plenty of counter space and storage. A large sunroom at the back of the home provides a serene retreat for relaxation or entertaining. Situated on 3.47± picturesque acres, the property features breathtaking Delta sunsets and numerous mature trees. Discover all the excellent features this home offers by calling Lindsay Williams today!

**LINDSAY**  
**WILLIAMS**  
REALTOR®

Office: 662.441.2500

Cell: 662.719.8118

[Lindsay@TomSmithLand.com](mailto:Lindsay@TomSmithLand.com)



Expect More. Get More.

**A Real Estate Expert You Can Trust**

[TomSmithLandandHomes.com](http://TomSmithLandandHomes.com)

Information is believed to be accurate but not guaranteed.







**A Real Estate Expert**  
*You Can Trust!*

**LINDSAY WILLIAMS**

REALTOR®

O: 662.441.2500 C: 662.719.8118

Lindsay@TomSmithLand.com

TomSmithLandandHomes.com

**Tom  
Smith  
LAND AND  
HOMES**

Expect More. Get More.

2011-2024  
**BEST**  
REALTORS

Information is believed to be accurate but not guaranteed.





**A Real Estate Expert**  
*You Can Trust!*

**LINDSAY WILLIAMS**

REALTOR®

O: 662.441.2500 C: 662.719.8118

Lindsay@TomSmithLand.com

TomSmithLandandHomes.com

**Tom  
Smith  
LAND AND  
HOMES**

Expect More. Get More.

2011-2024  
**BEST**  
REAL ESTATE AGENTS

Information is believed to be accurate but not guaranteed.





The primary bedroom offers wooden floors with ample natural light. A large bathroom is connected with a double vanity, make-up station, and plenty of cabinet space. There is also a large walk-in closet with built-in shelves and drawers.



**A Real Estate Expert  
You Can Trust!**

**LINDSAY WILLIAMS**

REALTOR®

O: 662.441.2500 C: 662.719.8118

Lindsay@TomSmithLand.com

TomSmithLandandHomes.com



Expect More. Get More.



Information is believed to be accurate but not guaranteed.





**A Real Estate Expert**  
*You Can Trust!*

**LINDSAY WILLIAMS**  
REALTOR®  
O: 662.441.2500 C: 662.719.8118  
Lindsay@TomSmithLand.com  
TomSmithLandandHomes.com

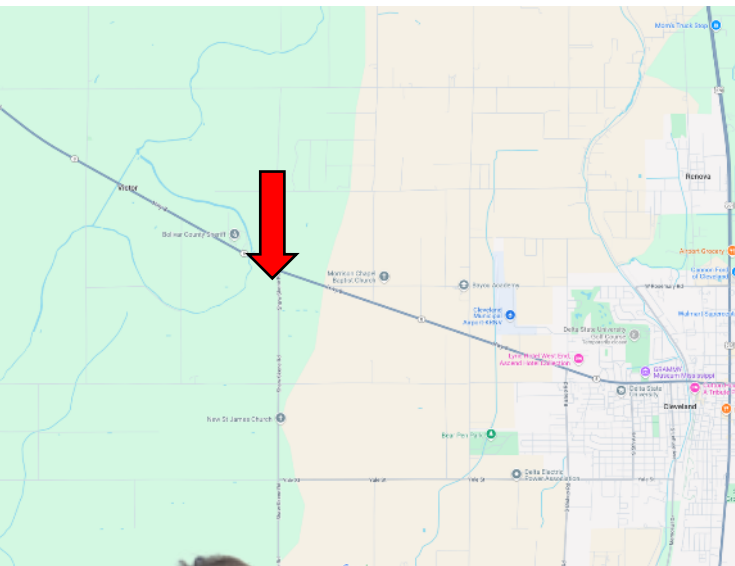
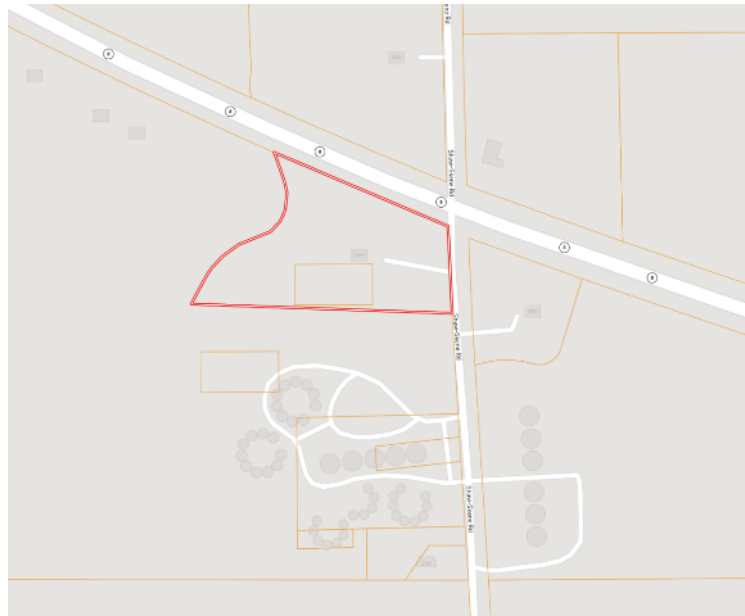
**Tom  
Smith  
LAND AND  
HOMES**  
Expect More. Get More.

2011-2024  
**BEST  
REALTORS**

Information is believed to be accurate but not guaranteed.



# MAPS | [Click for Interactive Map](#)



**Address:** 2907 HWY 8 W.  
Cleveland, MS 38732

**Directions from Hwy 8 & Hwy 61 in Cleveland, MS:** Travel west on Highway 8 for 4.9 miles. The home will be on the left at the intersection of Hwy 8 and Shaw-Skene Road.

**[Click for the Google Maps Link](#)**



**LINDSAY  
WILLIAMS**  
REALTOR®

Office: 662.441.2500

Cell: 662.719.8118

[Lindsay@TomSmithLand.com](mailto:Lindsay@TomSmithLand.com)



**A Real Estate Expert You Can Trust**

[TomSmithLandandHomes.com](http://TomSmithLandandHomes.com)

Information is believed to be accurate but not guaranteed.

