

CHARMING BRICK HOME ON 3.47± ACRES IN BOLIVAR COUNTY
2907 HWY 8 W. Cleveland, MS 38732 | \$375,000



Welcome to your new charming home in Bolivar County, MS! The brick house features three bedrooms, three full bathrooms, a spacious living area highlighted by stunning vaulted ceilings, and a cozy gas fireplace. The living room seamlessly connects to the kitchen, with plenty of counter space and storage. A large sunroom at the back of the home provides a serene retreat for relaxation or entertaining. Situated on 3.47± picturesque acres, the property features breathtaking Delta sunsets and numerous mature trees. Discover all the excellent features this home offers by calling Lindsay Williams today!

LINDSAY
WILLIAMS
REALTOR®

Office: 662.441.2500

Cell: 662.719.8118

Lindsay@TomSmithLand.com



Expect More. Get More.

A Real Estate Expert You Can Trust

TomSmithLandandHomes.com

Information is believed to be accurate but not guaranteed.





A Real Estate Expert
You Can Trust!

LINDSAY WILLIAMS
REALTOR®
O: 662.441.2500 C: 662.719.8118
Lindsay@TomSmithLand.com
TomSmithLandandHomes.com

Tom Smith
LAND AND
HOMES
Expect More. Get More.

2011-2024
BEST
REAL ESTATE AGENTS

Information is believed to be accurate but not guaranteed.



A Real Estate Expert
You Can Trust!

LINDSAY WILLIAMS

REALTOR®

O: 662.441.2500 C: 662.719.8118

Lindsay@TomSmithLand.com

TomSmithLandandHomes.com

**Tom
Smith
LAND AND
HOMES**

Expect More. Get More.

2011-2024
BEST
REALTORS

Information is believed to be accurate but not guaranteed.



The primary bedroom offers wooden floors with ample natural light. A large bathroom is connected with a double vanity, make-up station, and plenty of cabinet space. There is also a large walk-in closet with built-in shelves and drawers.



A Real Estate Expert
You Can Trust!

LINDSAY WILLIAMS

REALTOR®

O: 662.441.2500 C: 662.719.8118

Lindsay@TomSmithLand.com

TomSmithLandandHomes.com



Expect More. Get More.



Information is believed to be accurate but not guaranteed.



A Real Estate Expert
You Can Trust!

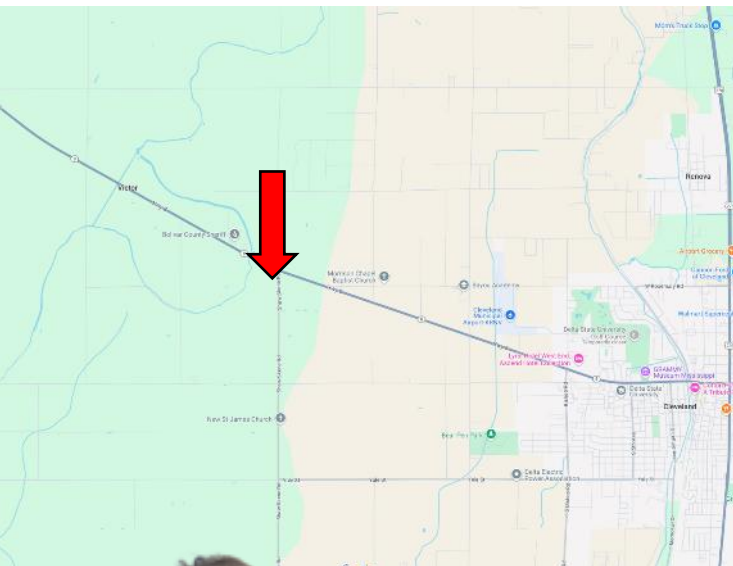
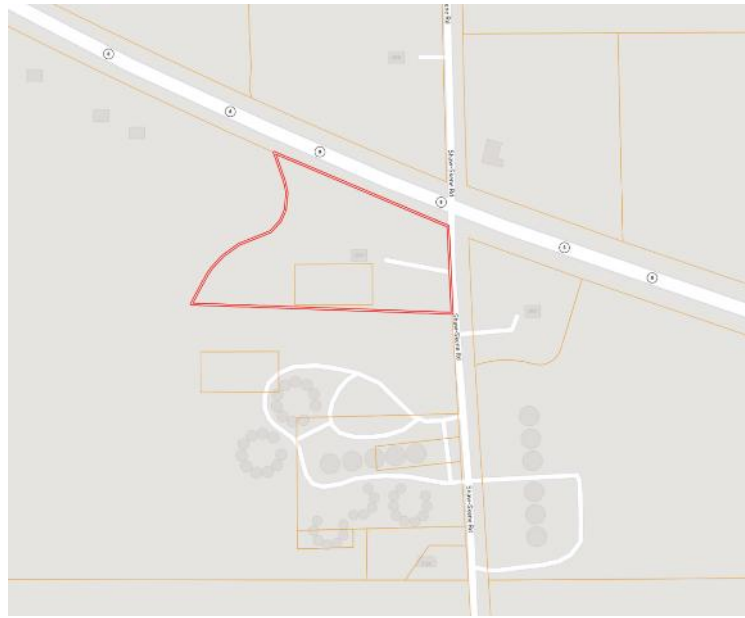
LINDSAY WILLIAMS
REALTOR®
O: 662.441.2500 C: 662.719.8118
Lindsay@TomSmithLand.com
TomSmithLandandHomes.com

**Tom
Smith
LAND AND
HOMES**
Expect More. Get More.

2011-2024
**BEST
REALTORS**

Information is believed to be accurate but not guaranteed.

MAPS | [Click for Interactive Map](#)



Address: 2907 HWY 8 W.
Cleveland, MS 38732

Directions from Hwy 8 & Hwy 61 in Cleveland, MS: Travel west on Highway 8 for 4.9 miles. The home will be on the left at the intersection of Hwy 8 and Shaw-Skene Road.

[Click for the Google Maps Link](#)



**LINDSAY
WILLIAMS**
REALTOR®

Office: 662.441.2500

Cell: 662.719.8118

Lindsay@TomSmithLand.com



A Real Estate Expert You Can Trust

TomSmithLandandHomes.com

Information is believed to be accurate but not guaranteed.

