

6.2 +/- ACRE LOT
Hwy 35, Mize, MS



This prime piece of Smith County land is situated along Highway 35 in the heart of Mize, offering 1,300 +/- feet of road frontage on a peaceful 6.2 +/- acre wooded property. Imagine building your dream home tucked away among the trees, with plenty of space for a workshop or other personal projects. Whether you're looking for a serene place to settle down or simply want your own slice of Mississippi, this property has incredible potential.

Opportunities like this are rare—don't miss out.! Contact Dale or David today to make it yours!



DALE WILDS
REALTOR®

O: 601.898.2772 | C: 662.715.7109
Dale@TomSmithLand.com



DAVID BELDEN
ALC®, REALTOR®

O: 601.898.2772 | C: 601.415.3884
DBelden@TomSmithLand.com

TomSmithLandandHomes.com

Information is believed to be accurate but not guaranteed.





DALE WILDS
REALTOR®

O: 601.898.2772 | C: 662.715.7109
Dale@TomSmithLand.com



DAVID BELDEN
ALC®, REALTOR®

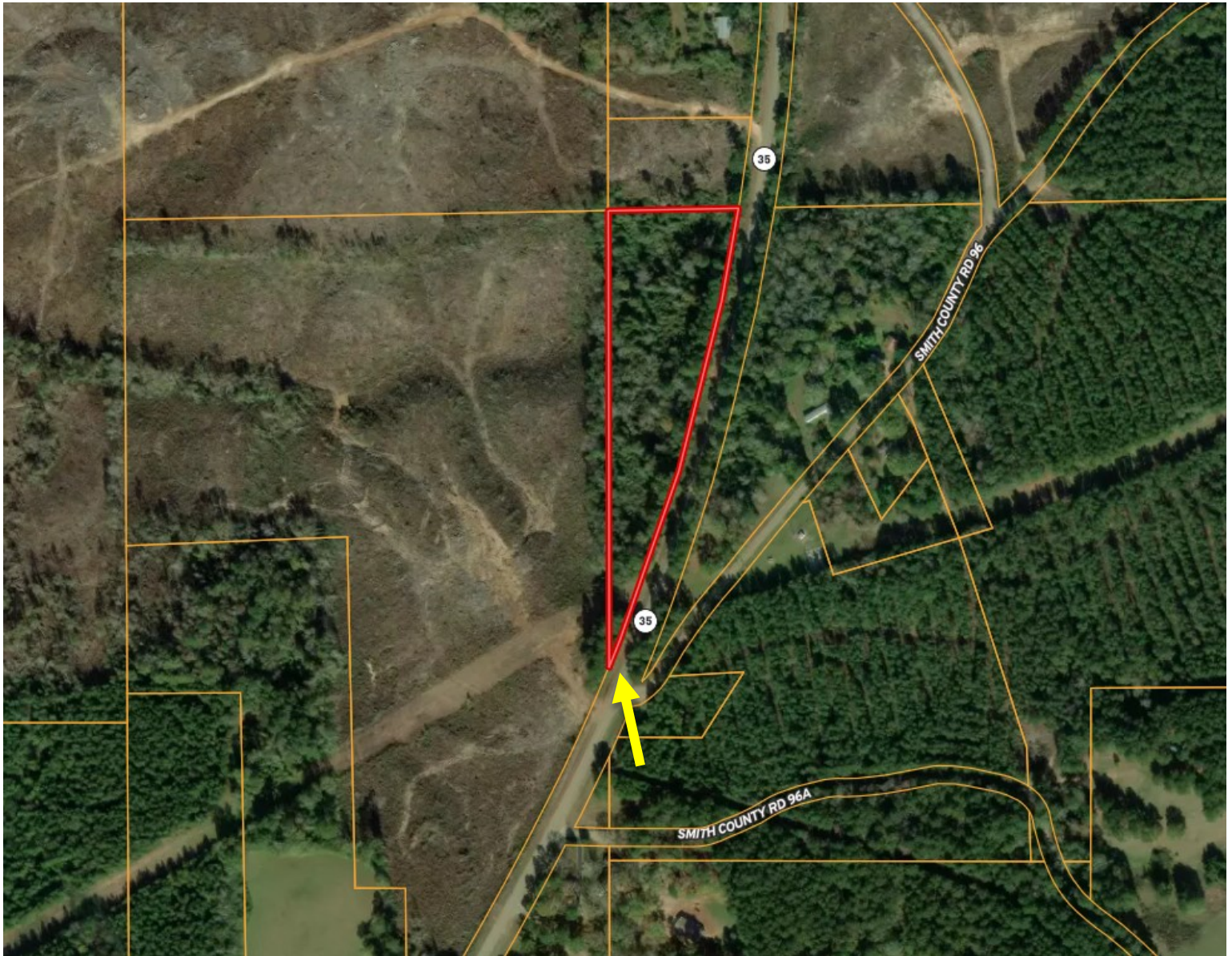
O: 601.898.2772 | C: 601.415.3884
DBelden@TomSmithLand.com

TomSmithLandandHomes.com

Information is believed to be accurate but not guaranteed.



AERIAL MAP



[CLICK HERE FOR THE LANDID INTERACTIVE MAP](#)

DALE WILDS
REALTOR®

O: 601.898.2772 | C: 662.715.7109
Dale@TomSmithLand.com



DAVID BELDEN
ALC®, REALTOR®

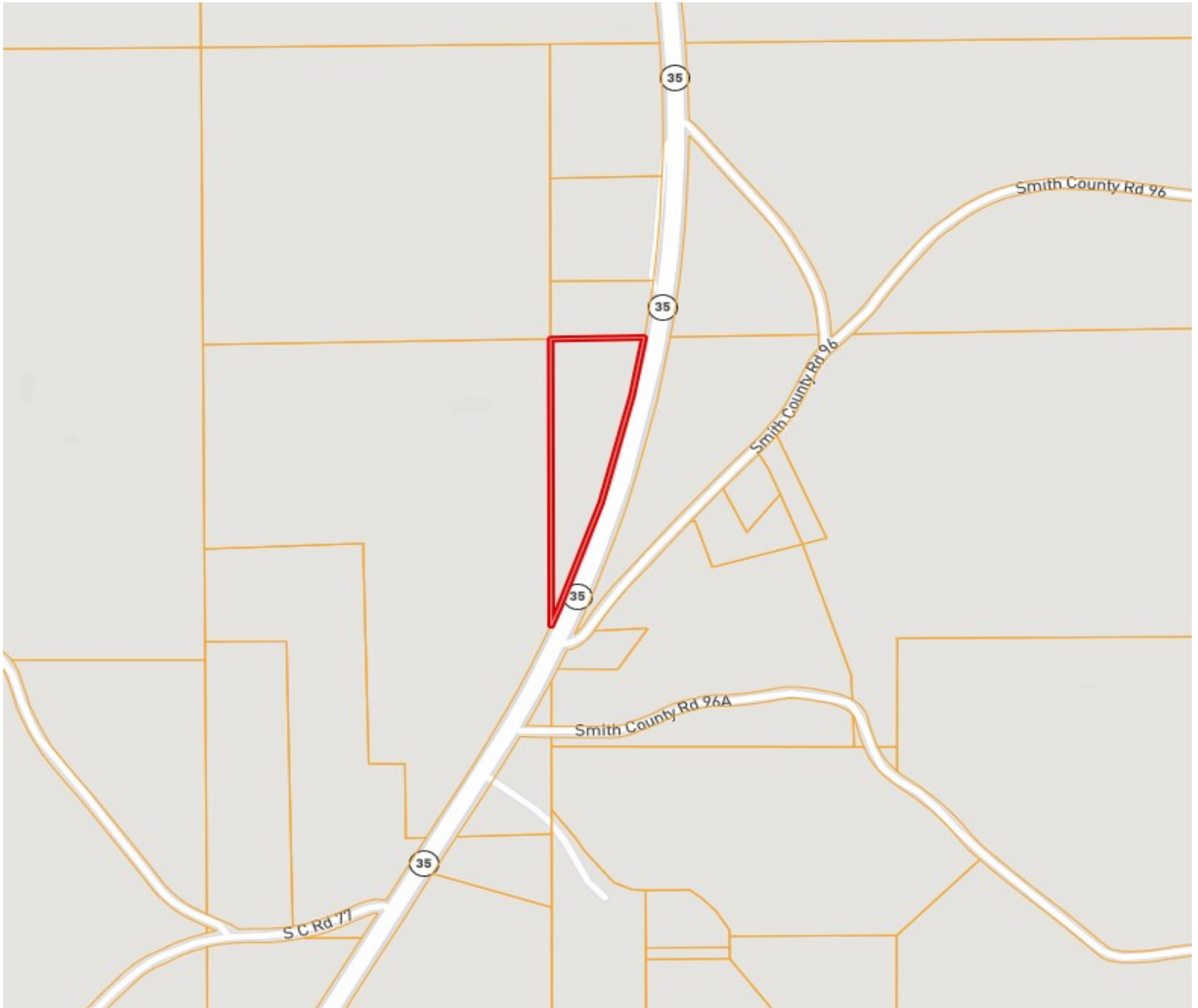
O: 601.898.2772 | C: 601.415.3884
DBelden@TomSmithLand.com

TomSmithLandandHomes.com

Information is believed to be accurate but not guaranteed.



OWNERSHIP MAP



DALE WILDS
REALTOR®

O: 601.898.2772 | C: 662.715.7109
Dale@TomSmithLand.com



DAVID BELDEN
ALC®, REALTOR®

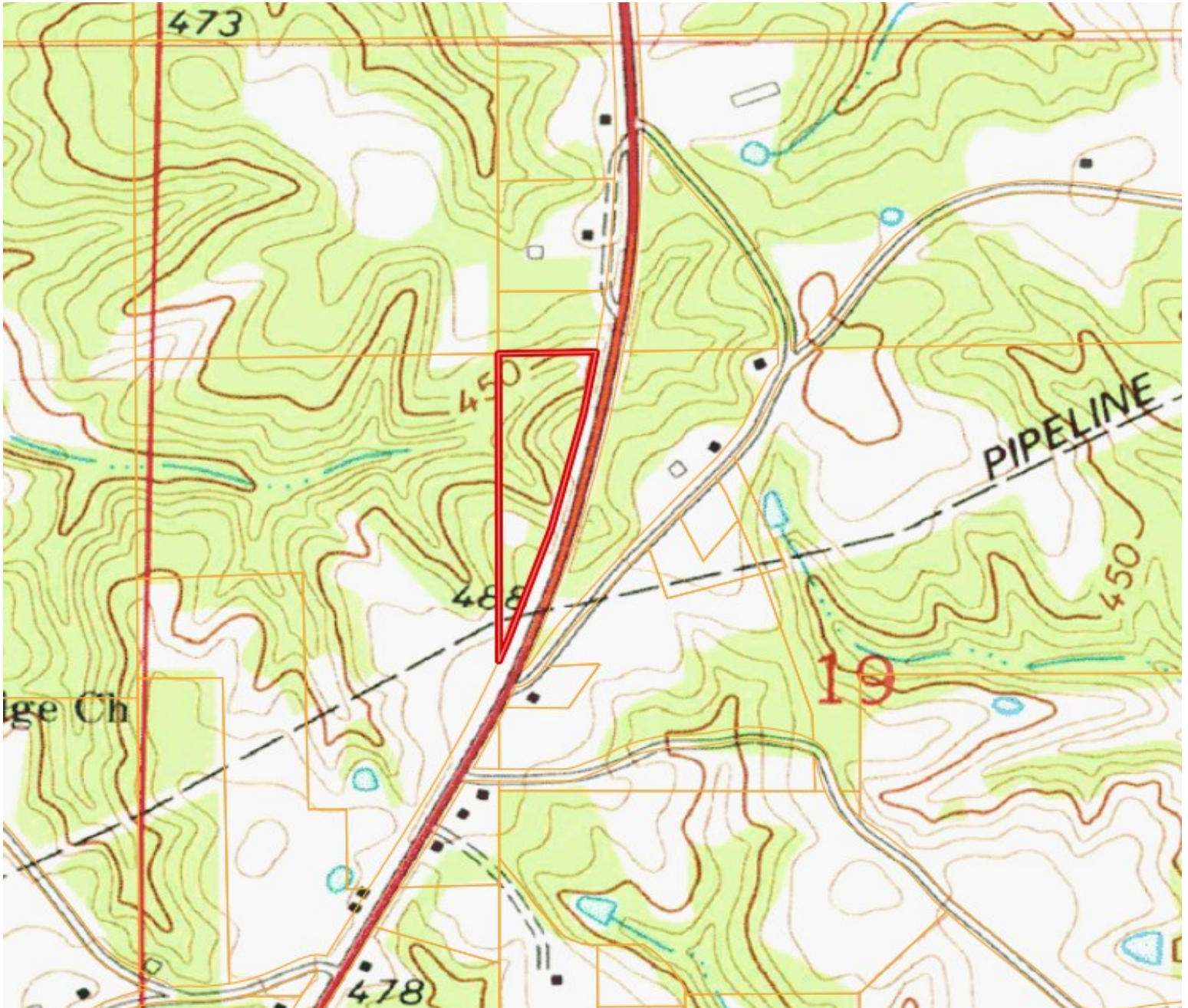
O: 601.898.2772 | C: 601.415.3884
DBelden@TomSmithLand.com

TomSmithLandandHomes.com

Information is believed to be accurate but not guaranteed.



TOPO MAP



DALE WILDS
REALTOR®

O: 601.898.2772 | C: 662.715.7109
Dale@TomSmithLand.com



DAVID BELDEN
ALC®, REALTOR®

O: 601.898.2772 | C: 601.415.3884
DBelden@TomSmithLand.com

TomSmithLandandHomes.com

Information is believed to be accurate but not guaranteed.



DIRECTIONAL MAP



Directions from the Mize intersection of Highway 28 and Highway 35: Travel North on Hwy 35 for 5.0 miles until reaching the fork at Hwy 35 and Co Rd 96. Property is on the left side of Hwy 35.

Directions from the Raleigh intersection of MS-37 and Highway 35: Travel South on Hwy 35 for 6.4 miles until reaching the fork at Hwy 35 and Co Rd 96. Property is on the right side of Hwy 35.

[GOOGLE MAP LINK](#)



DALE WILDS
REALTOR®

O: 601.898.2772 | C: 662.715.7109
Dale@TomSmithLand.com



Expect More. Get More.



DAVID BELDEN
ALC®, REALTOR®

O: 601.898.2772 | C: 601.415.3884
DBelden@TomSmithLand.com

TomSmithLandandHomes.com

Information is believed to be accurate but not guaranteed.

