

# WOODED HOMESITE 6.5± ACRES IN SMITH COUNTY, MS



## \$45,000

This 6.5± acre wooded tract is in a prime location in Smith County between Raleigh and Mize within the Mize School District. The property offers 1,300+/-feet of road frontage along Highway 35. Imagine building your dream home tucked away among the trees, with plenty of space for a workshop or other personal projects. Whether you're looking for a serene place to settle down or simply want your slice of Mississippi, this property has incredible potential. Opportunities like this are rare—don't miss out! Contact Dale or David today to make it yours!



**DALE WILDS**  
REALTOR®

O: 601.898.2772 | C: 662.715.7109  
Dale@TomSmithLand.com



Expect More. Get More.



**DAVID BELDEN**  
ALC®, REALTOR®

O: 601.898.2772 | C: 601.415.3884  
DBelden@TomSmithLand.com

**TomSmithLandandHomes.com**

Information is believed to be accurate but not guaranteed.

100%  
2011-2024  
BEST  
BROKERAGES



**DALE WILDS**  
REALTOR®

O: 601.898.2772 | C: 662.715.7109  
Dale@TomSmithLand.com



**DAVID BELDEN**  
ALC®, REALTOR®

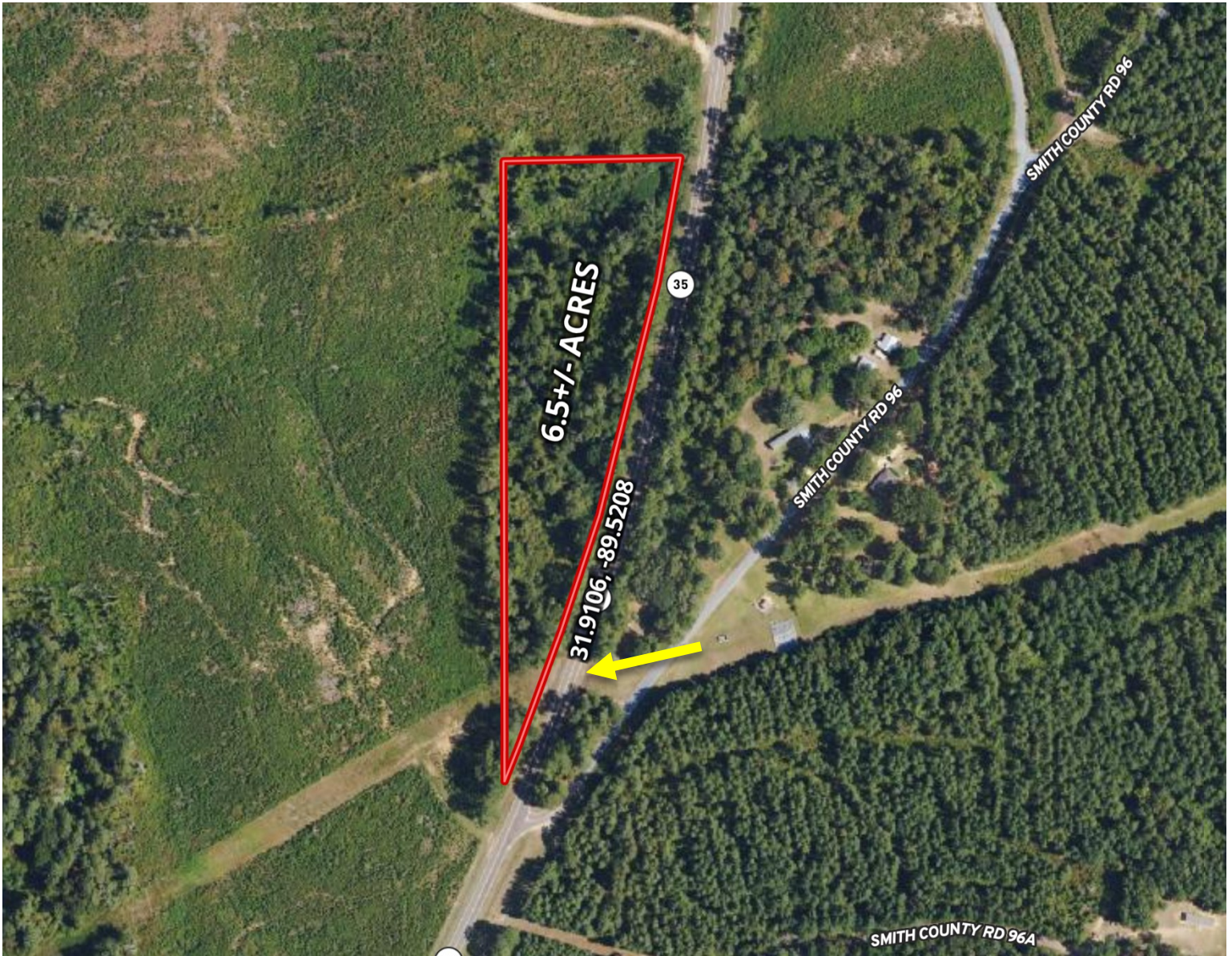
O: 601.898.2772 | C: 601.415.3884  
DBelden@TomSmithLand.com

**TomSmithLandandHomes.com**

Information is believed to be accurate but not guaranteed.



# AERIAL MAP



[CLICK HERE FOR THE LANDID INTERACTIVE MAP](#)

**DALE WILDS**  
REALTOR®

O: 601.898.2772 | C: 662.715.7109  
Dale@TomSmithLand.com



**DAVID BELDEN**  
ALC®, REALTOR®

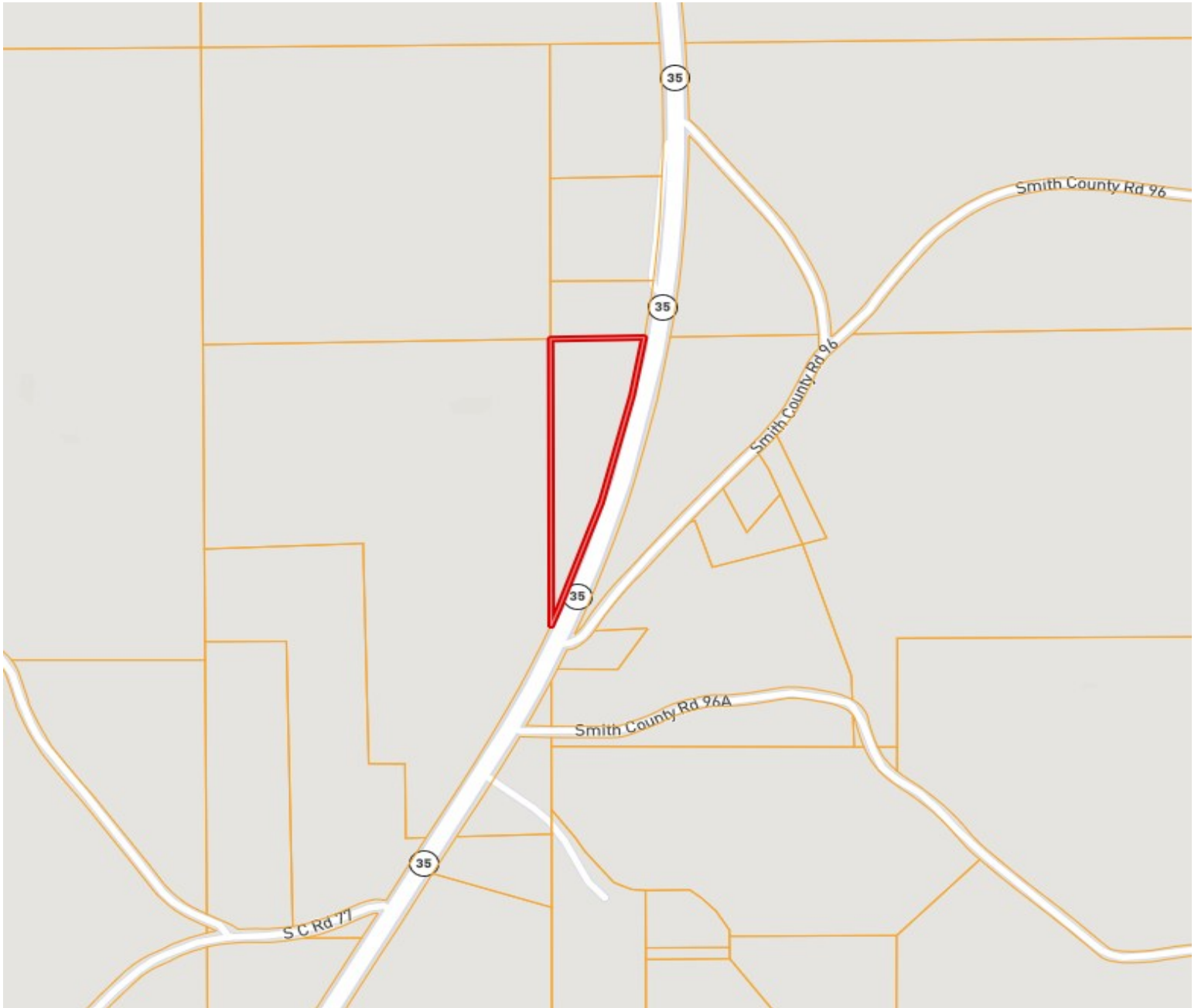
O: 601.898.2772 | C: 601.415.3884  
DBelden@TomSmithLand.com

[TomSmithLandandHomes.com](http://TomSmithLandandHomes.com)

Information is believed to be accurate but not guaranteed.



# OWNERSHIP MAP



**DALE WILDS**  
REALTOR®

O: 601.898.2772 | C: 662.715.7109  
Dale@TomSmithLand.com



**DAVID BELDEN**  
ALC®, REALTOR®

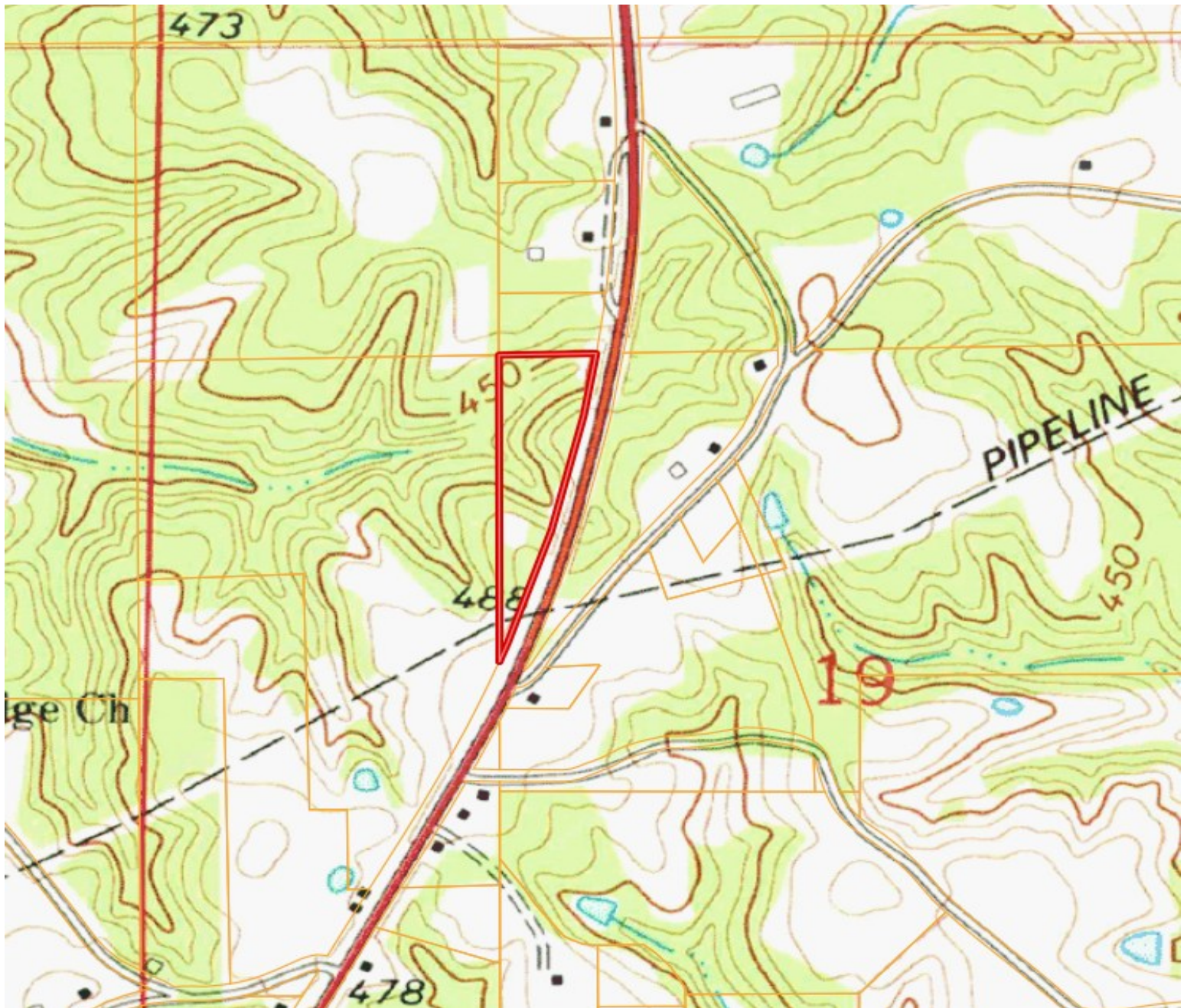
O: 601.898.2772 | C: 601.415.3884  
DBelden@TomSmithLand.com

**TomSmithLandandHomes.com**

Information is believed to be accurate but not guaranteed.



# TOPO MAP



**DALE WILDS**  
REALTOR®

O: 601.898.2772 | C: 662.715.7109  
Dale@TomSmithLand.com



**DAVID BELDEN**  
ALC®, REALTOR®

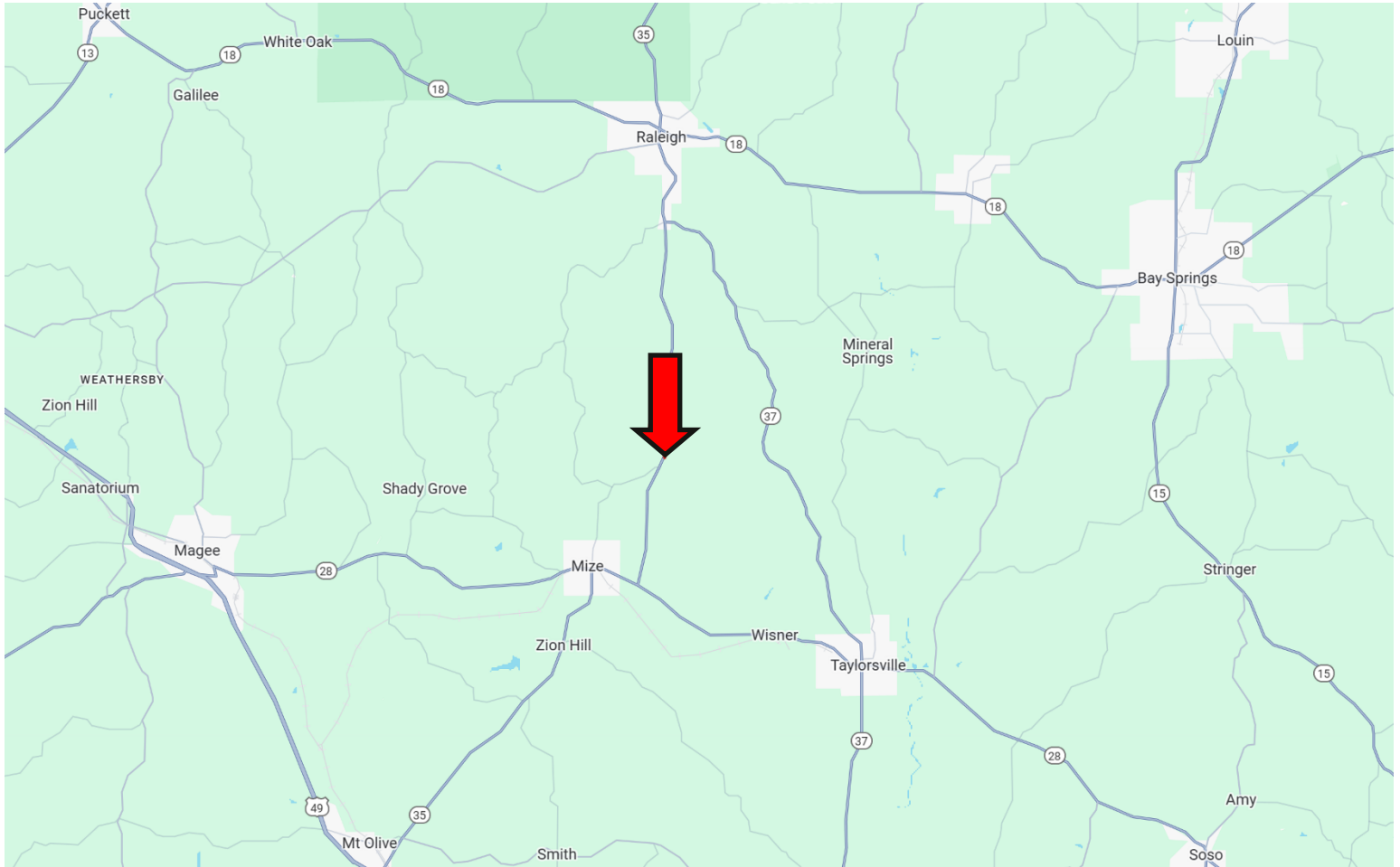
O: 601.898.2772 | C: 601.415.3884  
DBelden@TomSmithLand.com

**TomSmithLandandHomes.com**

Information is believed to be accurate but not guaranteed.



# DIRECTIONAL MAP



**Directions from intersection of Highway 28 and Highway 35 in Mize, MS: Travel North on Hwy 35 for 5.0 miles until reaching the fork at Hwy 35 and Co Rd 96. The property will be on the left side of Hwy 35.**

**Directions from the intersection of Hwy 18 and Hwy 35 in Raleigh, MS : Travel South on Hwy 35 for 8.7 miles until reaching the fork at Hwy 35 and Co Rd 96. The property will be on the right side of Hwy 35.**

**GOOGLE MAP LINK**



**DALE WILDS**  
REALTOR®

O: 601.898.2772 | C: 662.715.7109  
Dale@TomSmithLand.com



Expect More. Get More.



**DAVID BELDEN**  
ALC®, REALTOR®

O: 601.898.2772 | C: 601.415.3884  
DBelden@TomSmithLand.com

**TomSmithLandandHomes.com**

Information is believed to be accurate but not guaranteed.

