

# PRIME COMMERCIAL LOT 0.4± ACRES IN RANKIN COUNTY, MS



**\$107,000**

**CHAD  
WILSON**

REALTOR®

Office: 601.898.2772

Cell: 601.750.1970

Chad@TomSmithLand.com



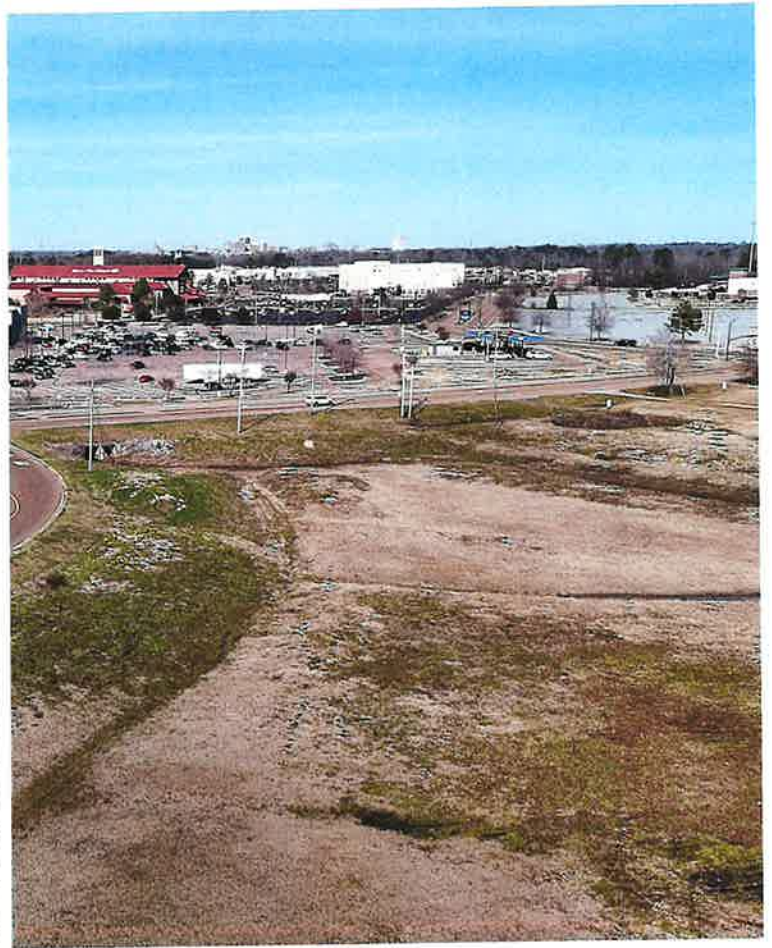
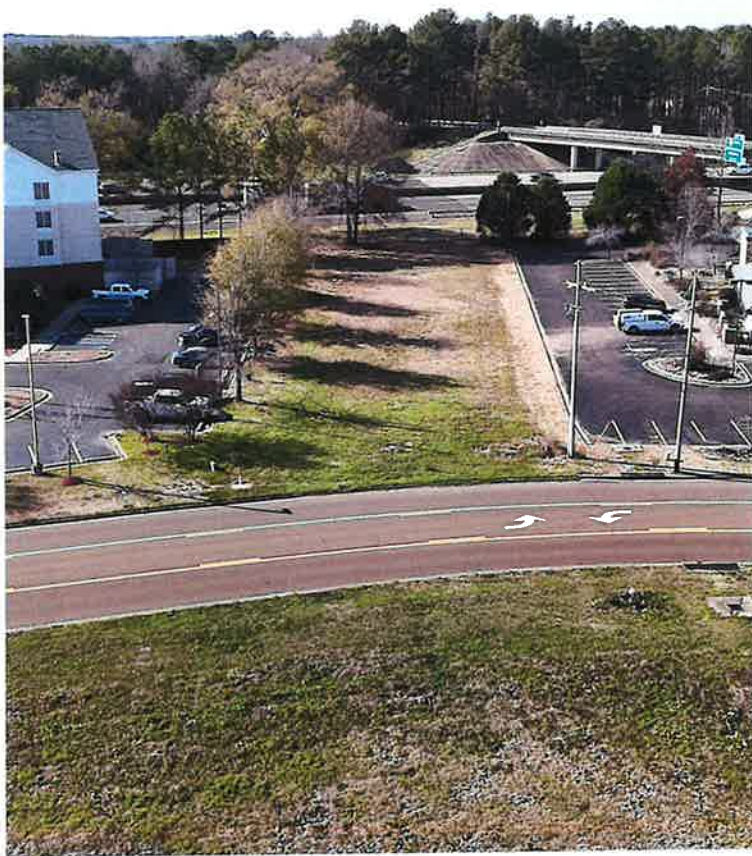
Expect More. Get More.

**A Real Estate Expert You Can Trust**

TomSmithLandandHomes.com

Information is believed to be accurate but not guaranteed.





Looking to build your dream business in one of Mississippi's fastest-growing commercial areas? This 0.4± acre Rankin County lot is ideally situated in Pearl, MS, offering exceptional visibility near Bass Pro Shops, Trustmark Park, and a wide array of thriving businesses. Zoned C2, it's ideal for a variety of commercial ventures. Conveniently located off I-20, with easy access to I-55 and US 49, this property provides the perfect combination of accessibility and opportunity in a rapidly expanding commercial area. Don't miss the chance to make your business vision come true in this prime location! Call Chad to schedule your tour today!

**A Real Estate Expert**  
*You Can Trust!*

**CHAD WILSON**  
REALTOR®

O: 601.898.2772 C: 601.750.1970

Chad@TomSmithLand.com

TomSmithLandandHomes.com



Expect More. Get More.



Information is believed to be accurate but not guaranteed.



**A Real Estate Expert**  
*You Can Trust!*

**CHAD WILSON**  
REALTOR®

O: 601.898.2772 C: 601.750.1970

Chad@TomSmithLand.com

TomSmithLandandHomes.com



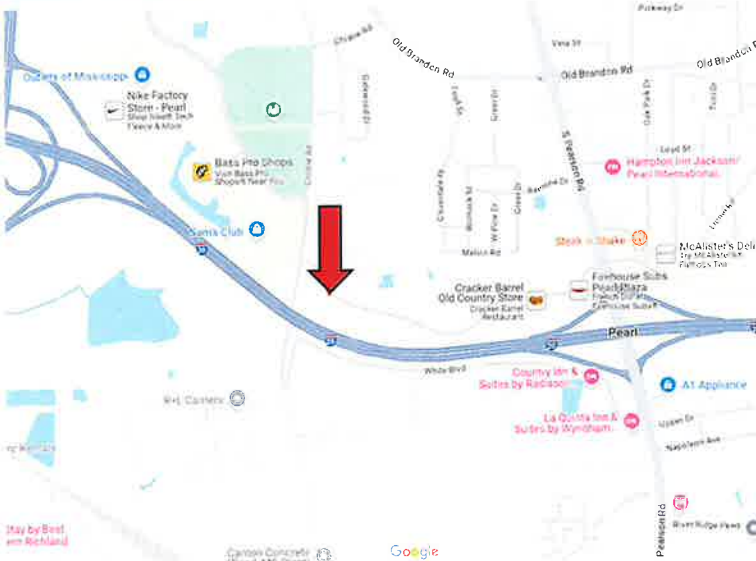
Expect More. Get More.



Information is believed to be accurate but not guaranteed.

# MAPS

[Click Here for the LandID Interactive Map Link](#)



**Directions from I-20 and Pearson Road in Pearl, MS: Take exit 48 for Pearl. Turn left onto Pearson Road and travel 0.2 miles. Turn left onto Riverwind Drive. After 0.7 miles, the property will be on the left.**

[Google Map Link](#)

**CHAD WILSON**  
REALTOR

Office: 601.898.2772  
Cell: 601.750.1970  
Chad@TomSmithLand.com



Expect More. Get More.

**A Real Estate Expert You Can Trust**  
TomSmithLandandHomes.com



Information is believed to be accurate but not guaranteed.