

# JUST A SLICE OF HEAVEN!

## 43± ACRES IN LEAKE COUNTY, MS

### \$148,350

This 43± acre Leake County property is tucked between the Natchez Trace and Highway 43 in the McVille Community, just north of Thomastown, MS. The property is fully wooded with a great mix of hardwood and pine. A gas line traversing the property provides for outstanding food plots, and you know that properties along the Trace have a reputation for trophy bucks, and the turkey population is strong! There are several good spots to build a home along Highway 43, and none of the land is in a flood zone. If you're looking for a peaceful place to build your dream home with your dream shop and raise your family surrounded by nature with the convenience of being close to town, this property has much to offer. Call The Land Man to schedule your tour before it's gone!



**TOM  
SMITH**

ALC®, BROKER

Office: 601.898.2772

Cell: 601.454.9397

Tom@TomSmithLand.com



Expect More. Get More.

## Call The Land Man Today!

TomSmithLandandHomes.com

Information is believed to be accurate but not guaranteed.





# The Land & Homes Expert *You Can Trust!*

**TOM SMITH**

ALC®, BROKER

O: 601.898.2772 C: 601.454.9397

Tom@TomSmithLand.com

TomSmithLandandHomes.com



Expect More. Get More.



Information is believed to be accurate but not guaranteed.

# Aerial Map



The Land & Homes Expert  
You Can Trust!

**TOM SMITH**

ALC®, BROKER

O: 601.898.2772 C: 601.454.9397

Tom@TomSmithLand.com

TomSmithLandandHomes.com

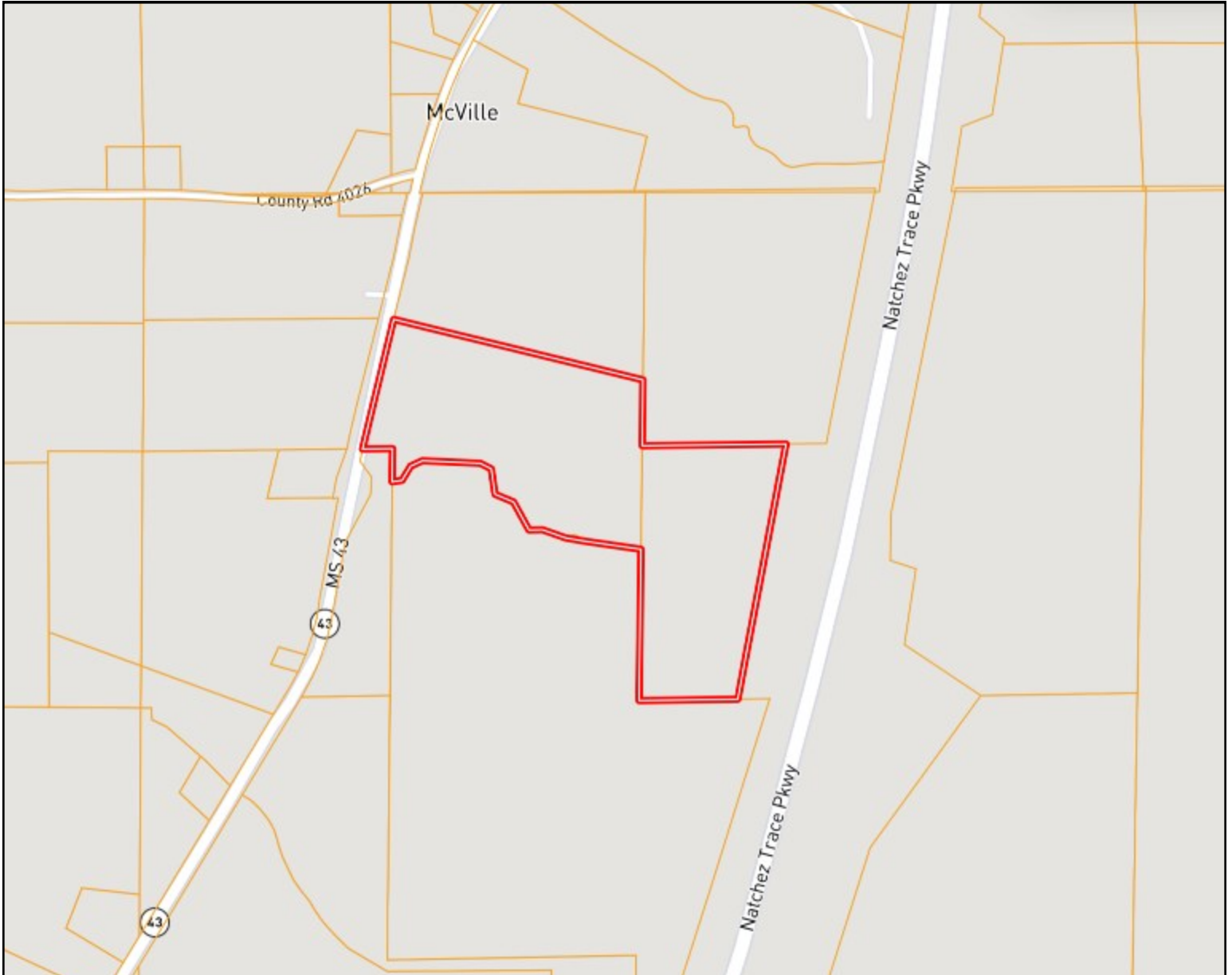


Expect More. Get More.



Information is believed to be accurate but not guaranteed.

# Ownership Map



**The Land & Homes Expert**  
*You Can Trust!*

**TOM SMITH**

ALC®, BROKER

O: 601.898.2772 C: 601.454.9397

Tom@TomSmithLand.com

TomSmithLandandHomes.com

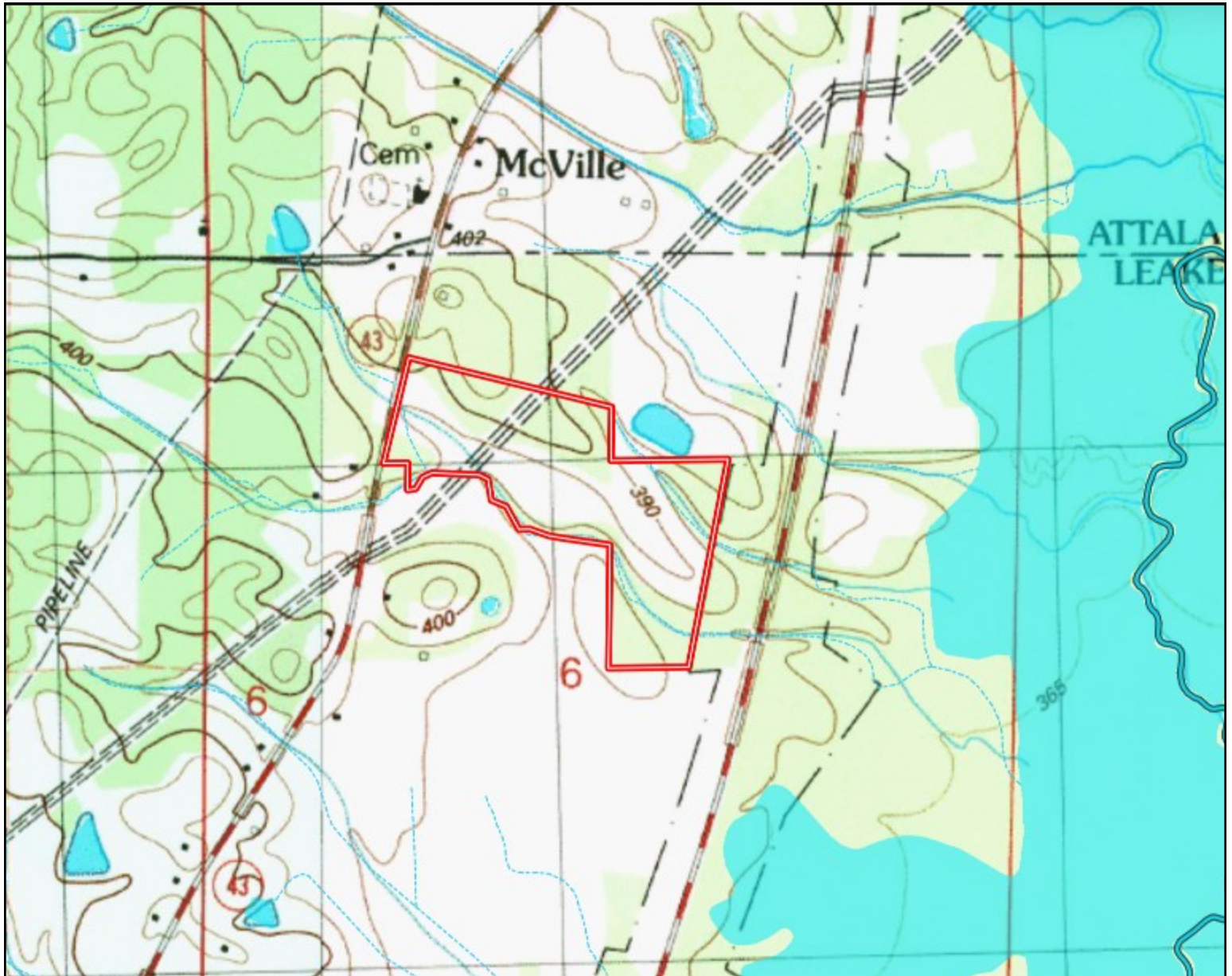


Expect More. Get More.



Information is believed to be accurate but not guaranteed.

# Topography Map



**The Land & Homes Expert**  
*You Can Trust!*

**TOM SMITH**

ALC®, BROKER

O: 601.898.2772 C: 601.454.9397

Tom@TomSmithLand.com

TomSmithLandandHomes.com



Expect More. Get More.



Information is believed to be accurate but not guaranteed.

# Soil Map



SOIL CODE	SOIL DESCRIPTION	ACRES	%	CPI	NCCPI	CAP
PrB	Providence silt loam, 2 to 5 percent slopes	24.8	53.47	0	63	2e
RK	Rosebloom and Arkabutla soils, frequently flooded	14.89	32.1	0	59	5w
PrC2	Providence silt loam, 5 to 8 percent slopes, eroded	6.63	14.29	0	28	3e
BdA	Bude silt loam, 0 to 2 percent slopes	0.06	0.13	0	57	2w

The Land & Homes Expert  
You Can Trust!

**TOM SMITH**

ALC®, BROKER

O: 601.898.2772 C: 601.454.9397

Tom@TomSmithLand.com

TomSmithLandandHomes.com

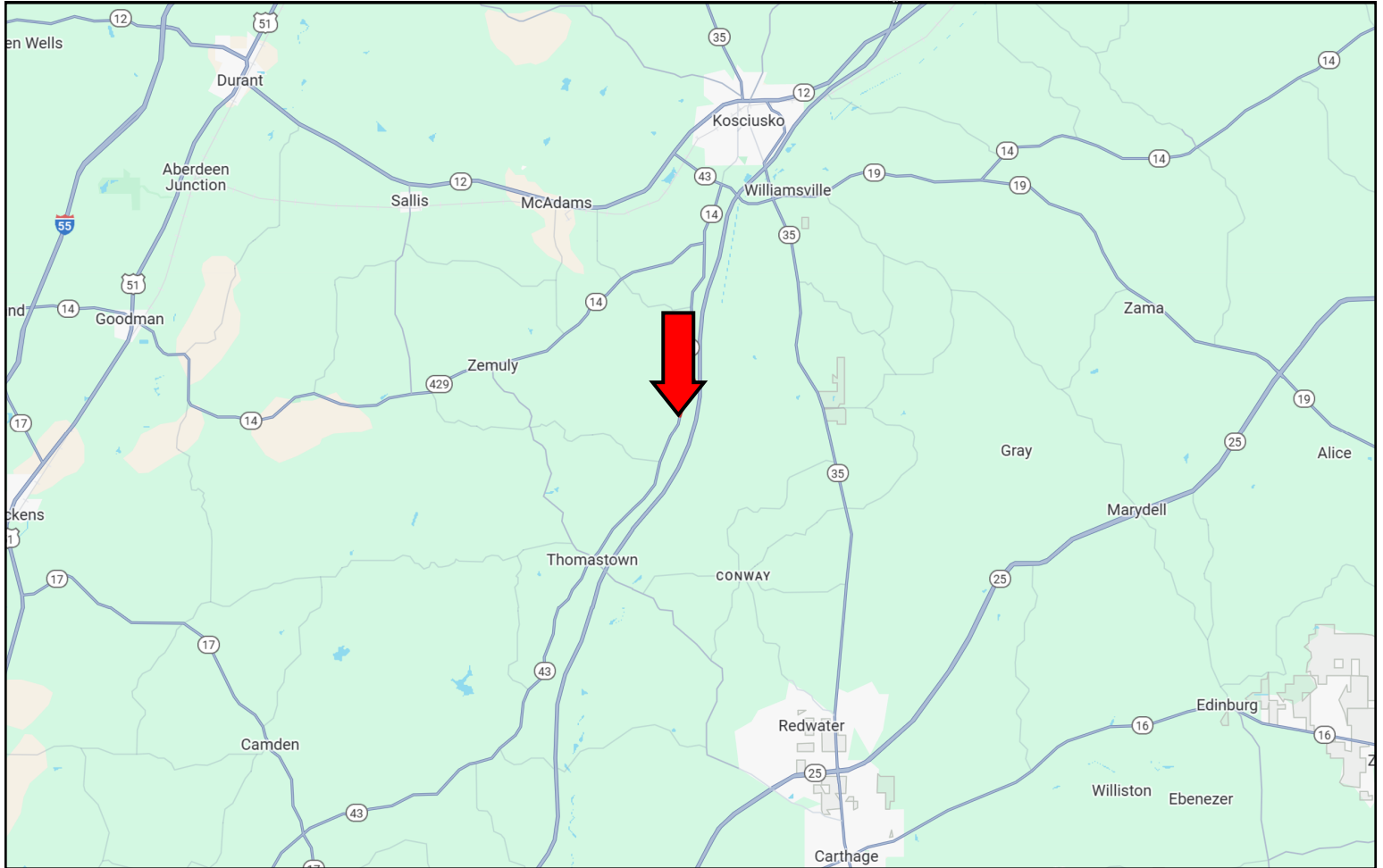


Expect More. Get More.



Information is believed to be accurate but not guaranteed.

# Directional Map



**Directions from the intersection of Hwy 429 and Hwy 43 in Thomastown, MS: Travel Hwy 43 North for 5.2 miles. The property will be on your right. [GOOGLE MAP LINK](#)**



**TOM SMITH**  
ALC®, BROKER  
Office: 601.898.2772  
Cell: 601.454.9397  
Tom@TomSmithLand.com



Expect More. Get More.

**Call The Land Man Today!**

TomSmithLandandHomes.com

Information is believed to be accurate but not guaranteed.

