



**Move-In Ready 3-Bedroom, 2-Bathroom Home
709 Yale Street, Cleveland, MS | \$189,500**

This 1,782± SF move-in ready home offers three bedrooms and two bathrooms and was built in 1940 on a corner lot. It features beautiful wood floors throughout the house and two living areas for the family and friends to gather. In the kitchen, you will find a new cooktop and vent-a-hood, built-in oven, dishwasher, and window overlooking the backyard. The spacious den has a fireplace, which makes the room feel cozy, and the utility room and bathroom feature built-in storage. The carport features a convenient storage closet for tools and outdoor gear. A new roof and HVAC System has recently been installed. Call Tracey Bell today to schedule your private showing!
*Agent Owned

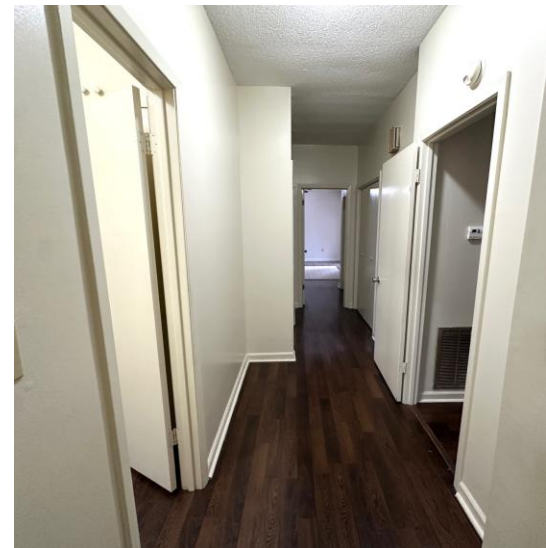


**TRACEY
BELL**
MANAGING BROKER
Office: 662.441.2500
Cell: 662.719.4720
Tracey@TomSmithLand.com



A Real Estate Expert You Can Trust
TomSmithLandandHomes.com





A Real Estate Expert *You Can Trust!*

TRACEY BELL

MANAGING BROKER

O: 662.441.2500 C: 662.719.4720

Tracey@TomSmithLand.com

TomSmithLandandHomes.com



Expect More. Get More.



Information is believed to be accurate but not guaranteed.



A Real Estate Expert *You Can Trust!*

TRACEY BELL

MANAGING BROKER

O: 662.441.2500 C: 662.719.4720

Tracey@TomSmithLand.com

TomSmithLandandHomes.com

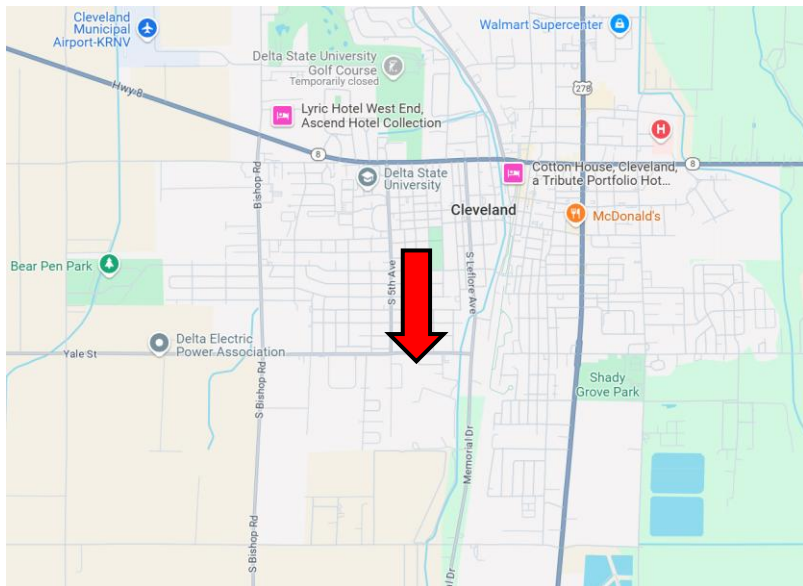
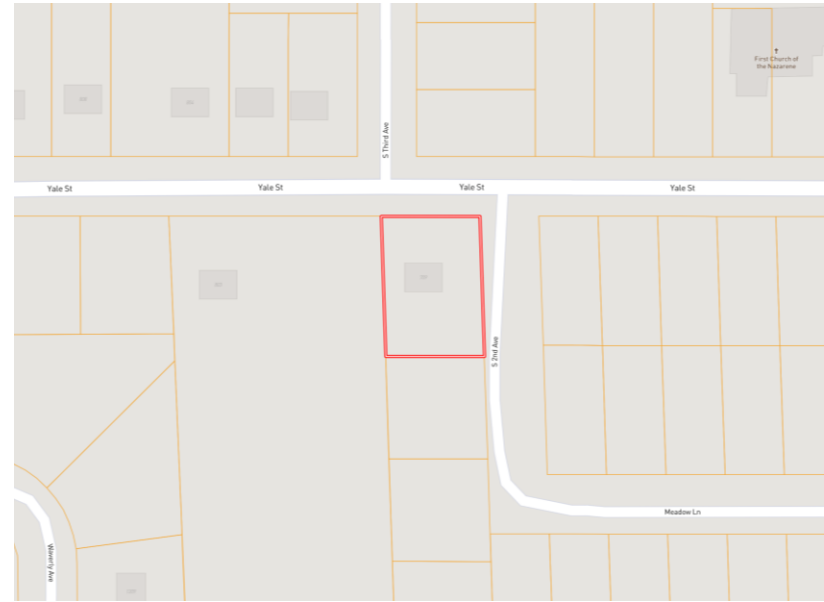


Expect More. Get More.



Information is believed to be accurate but not guaranteed.

0.32± Acres
33.7329, -90.7311



Directions from Hwy 8 & Hwy 61 in Cleveland, MS: Travel west on East Sunflower Road for 0.6 miles. Turn left onto N. Leflore Avenue and travel 1 mile. Turn onto Yale Street. After 0.3 miles, the home will be on the left.

Address: 709 Yale Street, Cleveland, MS 38732

[Google Maps Link](#)



TRACEY BELL
MANAGING BROKER
Office: 662.441.2500
Cell: 662.719.4720
Tracey@TomSmithLand.com



Expect More. Get More.

A Real Estate Expert You Can Trust

TomSmithLandandHomes.com

Information is believed to be accurate but not guaranteed.

