

# BOLIVAR COUNTY HOMESITE

408 East End St, Cleveland, MS 38732



**\$29,000**

Discover the perfect place to build your forever home at 408 E End St, Cleveland, MS! This 0.36±acre lot, located in Bolivar County, offers an excellent opportunity to create the home you've always dreamed of— all for just \$29,000. Don't miss out on this fantastic chance to bring your vision to life. Ready to take the next step? Call Anthony today!



**ANTHONY STEEN**  
REALTOR®  
Office: 601.898.2772  
Cell: 662.645.5151  
Anthony@TomSmithLand.com



**A Real Estate Expert You Can Trust**  
TomSmithLandandHomes.com

Information is believed to be accurate but not guaranteed.



# AERIAL MAP



[Click for the Interactive Map](#)

**A Real Estate Expert**  
*You Can Trust!*

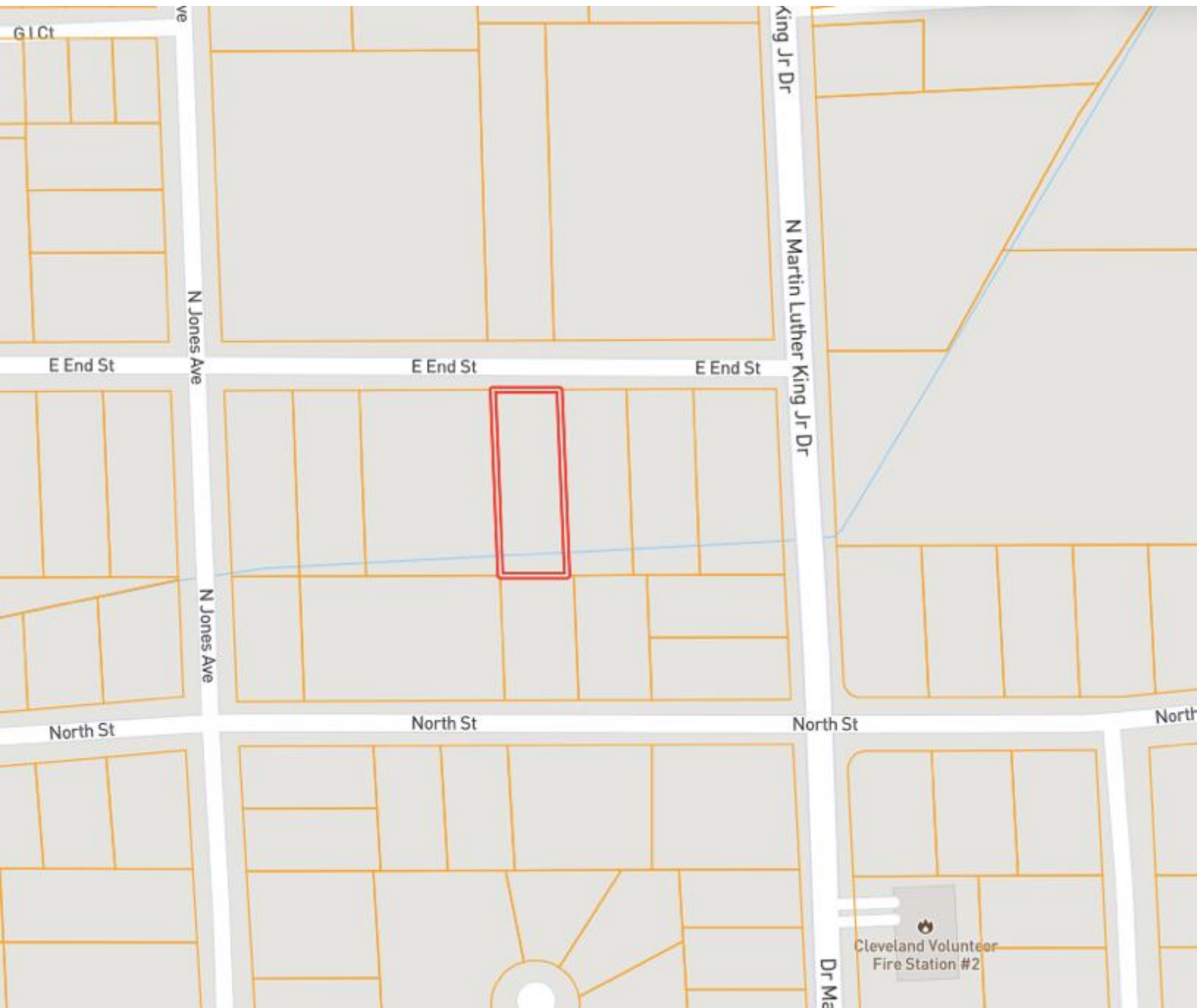
**ANTHONY STEEN**  
REALTOR®  
O: 601.898.2772 C: 662.645.5151  
Anthony@TomSmithLand.com  
TomSmithLandandHomes.com



Information is believed to be accurate but not guaranteed.



# OWNERSHIP MAP



**A Real Estate Expert**  
*You Can Trust!*

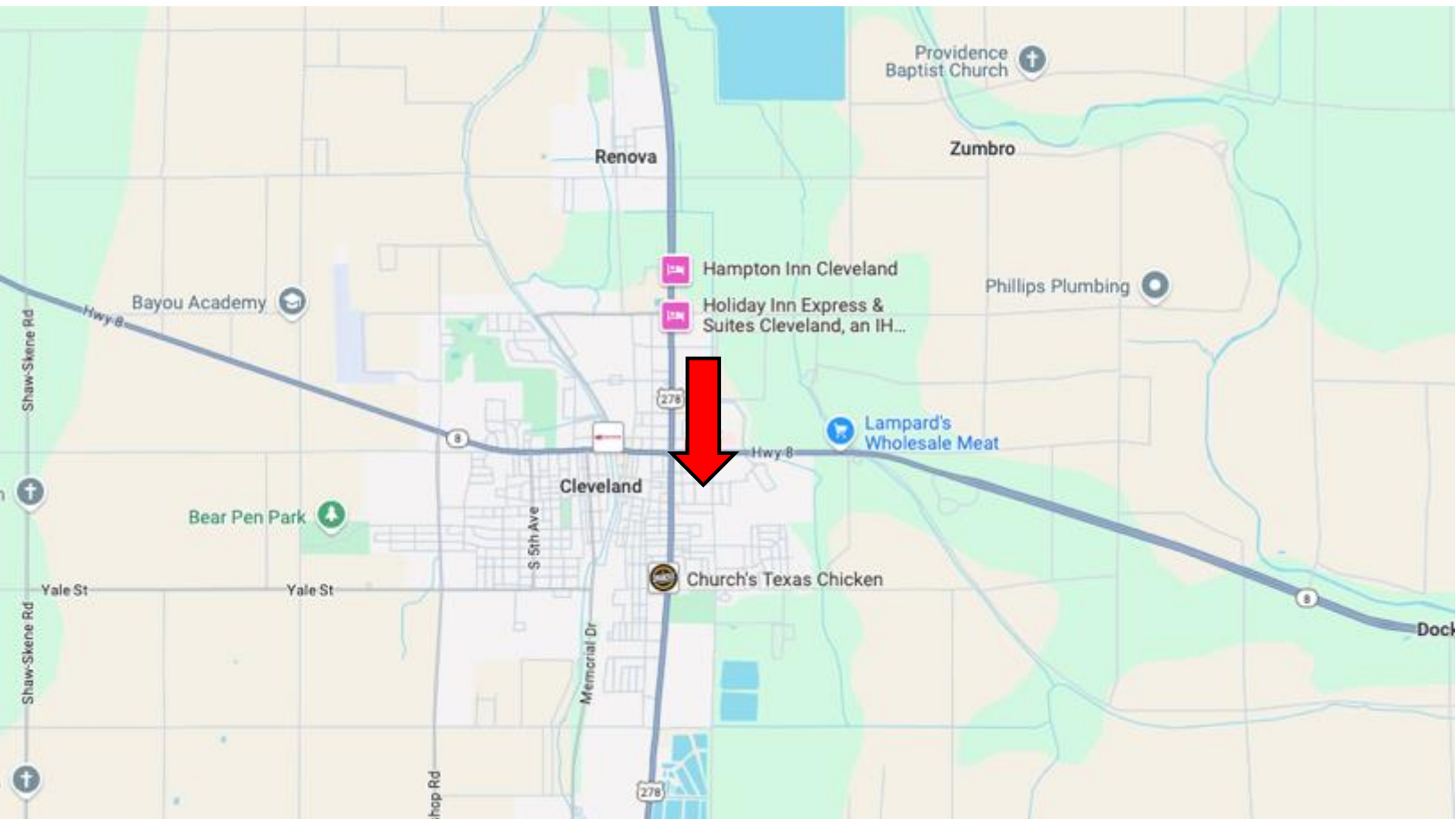
**ANTHONY STEEN**  
REALTOR®  
O: 601.898.2772 C: 662.645.5151  
Anthony@TomSmithLand.com  
TomSmithLandandHomes.com



Information is believed to be accurate but not guaranteed.



# DIRECTIONAL MAP



**Address: 408 East End St, Cleveland, MS 38732**

**Directions from the intersection of US-61 & MS-8 in Cleveland, MS:**

Travel south on N Davis Ave for 0.1 miles. Turn left onto East End St. After 0.2 miles, the lot will be on the right. [Google Map Link](#)



**ANTHONY  
STEEN**

REALTOR®

Office: 601.898.2772

Cell: 662.645.5151

Anthony@TomSmithLand.com



Expect More. Get More.

**A Real Estate Expert You Can Trust**

TomSmithLandandHomes.com

Information is believed to be accurate but not guaranteed.

