

Home on 1.37± Acres with Commercial-Grade Building  
**103 Lombardy Road, Drew, MS 38737**



Located on 1.37± acres in Sunflower County, MS, this property offers a blend of comfort and versatility. It features a 1,268± SF home with three spacious bedrooms and two bathrooms, as well as a 1,250± SF commercial-grade building equipped with electricity and plumbing. Inside the home, the living room seamlessly connects to the dining area, leading to a galley-style kitchen. Adjacent to the kitchen, a walk-in laundry room provides ample space for cleaning supplies and home essentials, keeping everything organized. Surrounded by mature trees, this peaceful retreat features stunning sunset views and plenty of room for a garden or outdoor activities for kids. Call Tracey Bell today to schedule your private showing!

**\$145,000**



**TRACEY  
BELL**  
MANAGING BROKER  
Office: 662.441.2500  
Cell: 662.719.4720  
Tracey@TomSmithLand.com



**A Real Estate Expert You Can Trust**  
TomSmithLandandHomes.com

Information is believed to be accurate but not guaranteed.







**A Real Estate Expert**  
*You Can Trust!*

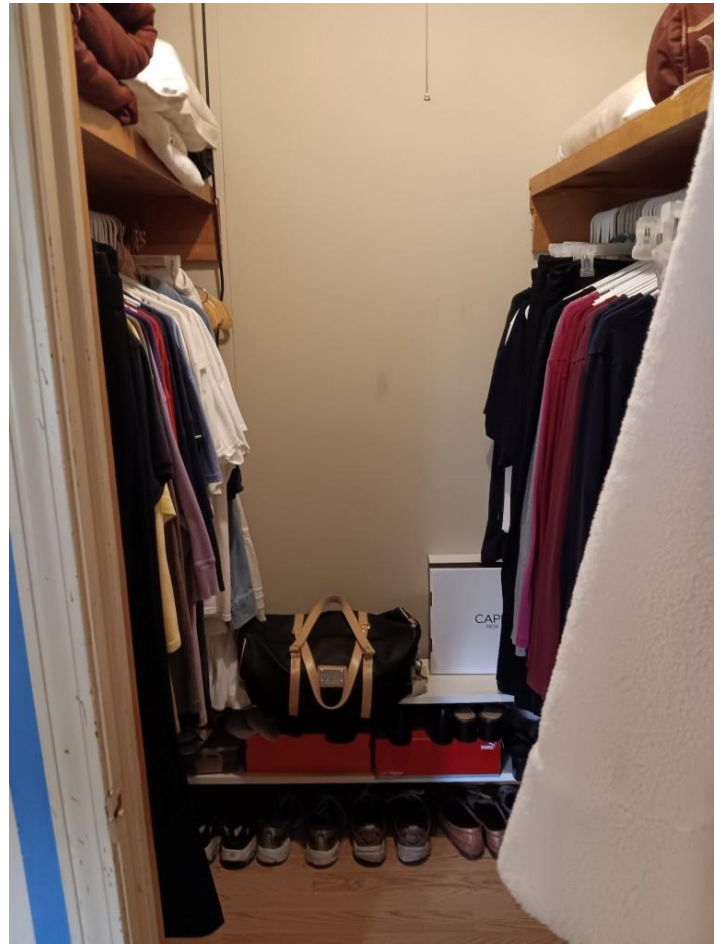
**TRACEY BELL**  
MANAGING BROKER  
O: 662.441.2500 C: 662.719.4720  
Tracey@TomSmithLand.com  
TomSmithLandandHomes.com

**Tom Smith**  
**LAND AND HOMES**  
Expect More. Get More.

LandReport  
2011-2024  
AMERICA'S  
**BEST**  
BROKERAGES

Information is believed to be accurate but not guaranteed.





**A Real Estate Expert**  
*You Can Trust!*

**TRACEY BELL**

MANAGING BROKER

O: 662.441.2500 C: 662.719.4720

Tracey@TomSmithLand.com

TomSmithLandandHomes.com



Expect More. Get More.



Information is believed to be accurate but not guaranteed.





This commercial-grade shop consists of 1,250± SF partitioned with the front having many built-in shelves and counters while the back portion has hookups for a commercial kitchen. The kitchen has a propane line, two 240 outlets for ovens, a double sink, drains for a commercial dishwasher, a 50-gallon propane hot water heater, and a half bathroom. Currently, the building has central AC and a 3-burner propane heater. The open concept serves as a blank canvas to fulfill the next lucky owner's dreams for their home business.



## A Real Estate Expert You Can Trust!

**TRACEY BELL**

MANAGING BROKER

O: 662.441.2500 C: 662.719.4720

Tracey@TomSmithLand.com

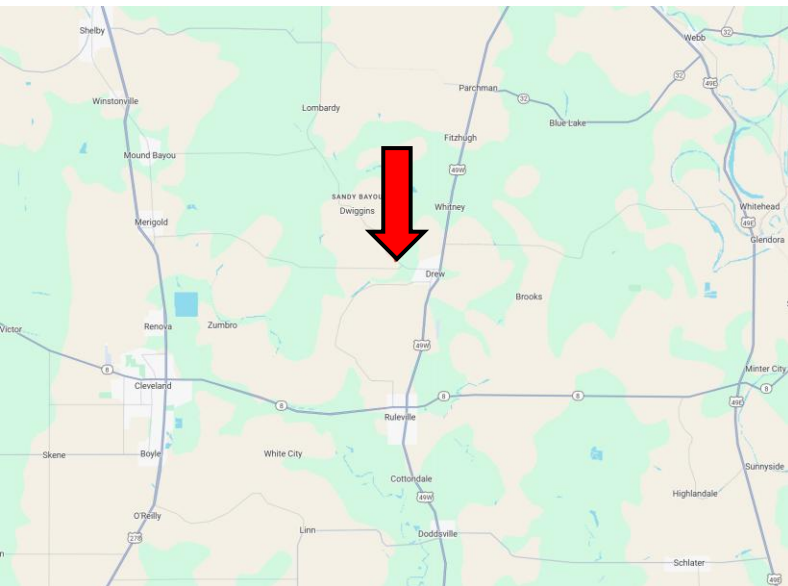
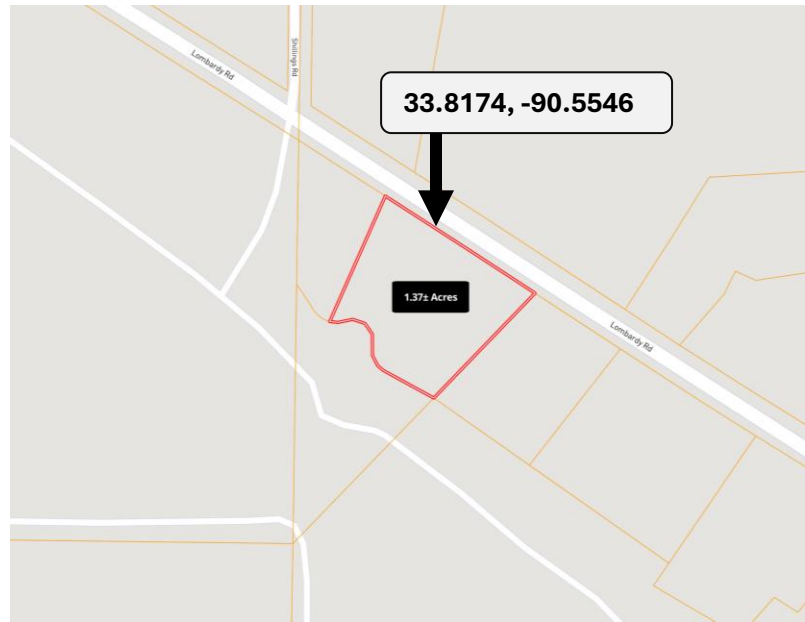
TomSmithLandandHomes.com



Expect More. Get More.







**Directions from Hwy 8 & Hwy 49 in Ruleville, MS:** Travel north on Hwy 49W for 5.8 miles. Turn left onto E. Park Avenue and travel 0.8 miles, then continue onto Lombardy Road. After 1.1 miles, the property will be on the left.

**Address:**

103 Lombardy Road, Drew, MS  
38737

[Google Maps Link](#)



**TRACEY  
BELL**

MANAGING BROKER

Office: 662.441.2500

Cell: 662.719.4720

[Tracey@TomSmithLand.com](mailto:Tracey@TomSmithLand.com)



Expect More. Get More.

**A Real Estate Expert You Can Trust**

[TomSmithLandandHomes.com](http://TomSmithLandandHomes.com)

Information is believed to be accurate but not guaranteed.

