

# Charming Cedar Home in Sunflower County

103 Park Avenue, Indianola, MS 38751



**\$225,000**

Located in a quiet cul-de-sac along Indian Bayou in Indianola, MS, this home sits on a 0.37± acre lot in Sunflower County. The cedar exterior adds character to the 2,740-square-foot residence, which includes four bedrooms and three updated bathrooms. The kitchen features stainless steel appliances, while scored concrete floors provide a durable and stylish touch. A gas log fireplace adds a cozy element to the living space. The home also includes a new roof, dual HVAC units, and a two-car carport, offering practical updates in a serene setting. Don't miss the chance to make it yours!



**EMERSON  
LOVELACE**

REALTOR®

Office: 662.441.2500

Cell: 601.715.3302

Emerson@TomSmithLand.com



Expect More. Get More.

**A Real Estate Expert You Can Trust**

TomSmithLandandHomes.com

Information is believed to be accurate but not guaranteed.





# A Real Estate Expert You Can Trust!

**EMERSON LOVELACE**  
REALTOR®

O: 662.441.2500 C: 601.715.3302

Emerson@TomSmithLand.com

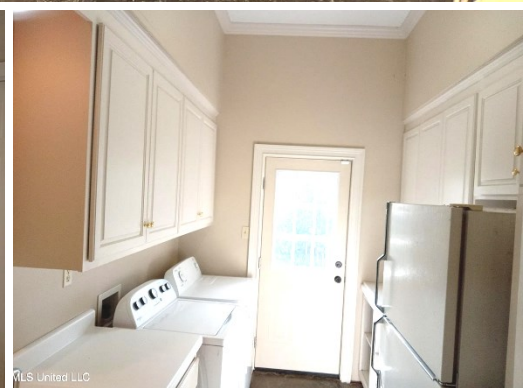
TomSmithLandandHomes.com



Expect More. Get More.



Information is believed to be accurate but not guaranteed.



**A Real Estate Expert**  
*You Can Trust!*

**EMERSON LOVELACE**  
REALTOR®

O: 662.441.2500 C: 601.715.3302

Emerson@TomSmithLand.com

TomSmithLandandHomes.com

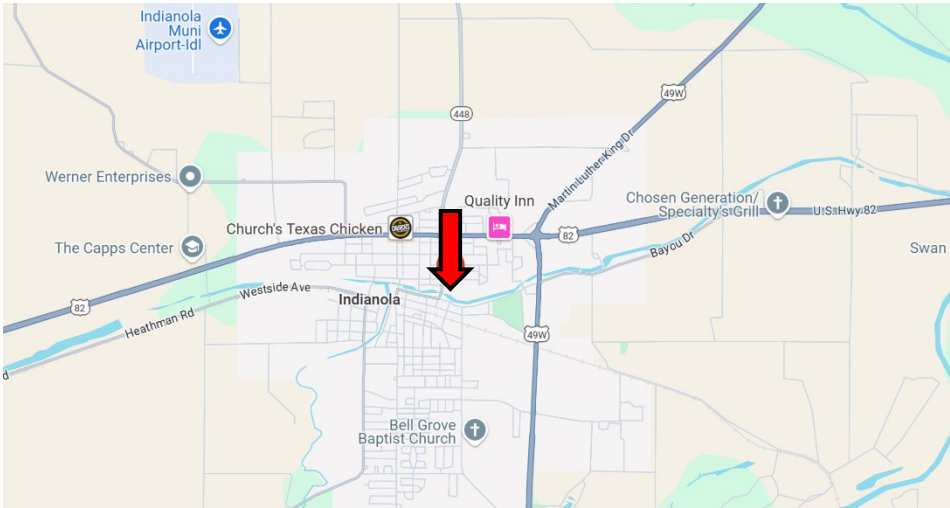
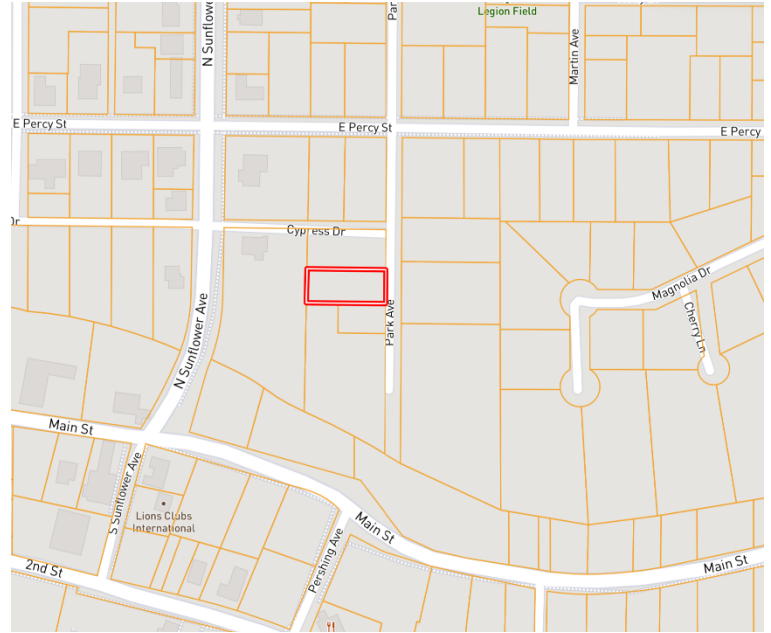


Expect More. Get More.



Information is believed to be accurate but not guaranteed.

# MAPS | [INTERACTIVE MAP LINK](#)



Directions from the Intersection of Hwy 49W and Hwy 82 in Indianola, MS: Travel Hwy 82 W for 0.9 miles. Turn left onto North Sunflower Avenue and travel 0.4 miles. Turn left onto Cypress Street and travel 459 feet. Turn right onto Park Avenue. After 135 feet, the home will be on the right.

103 Park Ave, Indianola, MS 38751  
[-Google Map Link](#)



**EMERSON  
LOVELACE**  
REALTOR®

Office: 662.441.2500  
Cell: 601.715.3302

[Emerson@TomSmithLand.com](mailto:Emerson@TomSmithLand.com)



Expect More. Get More.

**A Real Estate Expert You Can Trust**

[TomSmithLandandHomes.com](http://TomSmithLandandHomes.com)

Information is believed to be accurate but not guaranteed.

