

RECREATIONAL TRACT WITH DEVELOPMENT POTENTIAL

43± Acres in Lawrence County, MS



\$122,550

This 43+/- acre property in Lawrence County, MS, offers recreational and residential potential. With road access and 4.5+/- acres already cleared for a homesite or perfect for a dove/deer field, it provides a prime spot for outdoor activities. The land borders Halls Creek on the northern edge, further diversifying this tract. The remaining area is covered in mixed timber, offering privacy and natural beauty. Whether you want to build, hunt, or enjoy nature, this property is a versatile opportunity. Call Brady for a private showing today!



**BRADY
RICHARDSON**
REALTOR®

Office: 601.898.2772

Cell: 662.418.8791

Brady@TomSmithLand.com



Expect More. Get More.

A Real Estate Expert You Can Trust

TomSmithLandandHomes.com

Information is believed to be accurate but not guaranteed.





A Real Estate Expert *You Can Trust!*

BRADY RICHARDSON

REALTOR®

O: 601.898.2772 C: 662.418.8791

Brady@TomSmithLand.com

TomSmithLandandHomes.com



Expect More. Get More.





A Real Estate Expert You Can Trust!

BRADY RICHARDSON

REALTOR®

O: 601.898.2772 C: 662.418.8791

Brady@TomSmithLand.com

TomSmithLandandHomes.com



Expect More. Get More.



AERIAL MAP



[Click Here for the Land ID Map Link](#)

A Real Estate Expert
You Can Trust!

BRADY RICHARDSON

REALTOR®

O: 601.898.2772 C: 662.418.8791

Brady@TomSmithLand.com

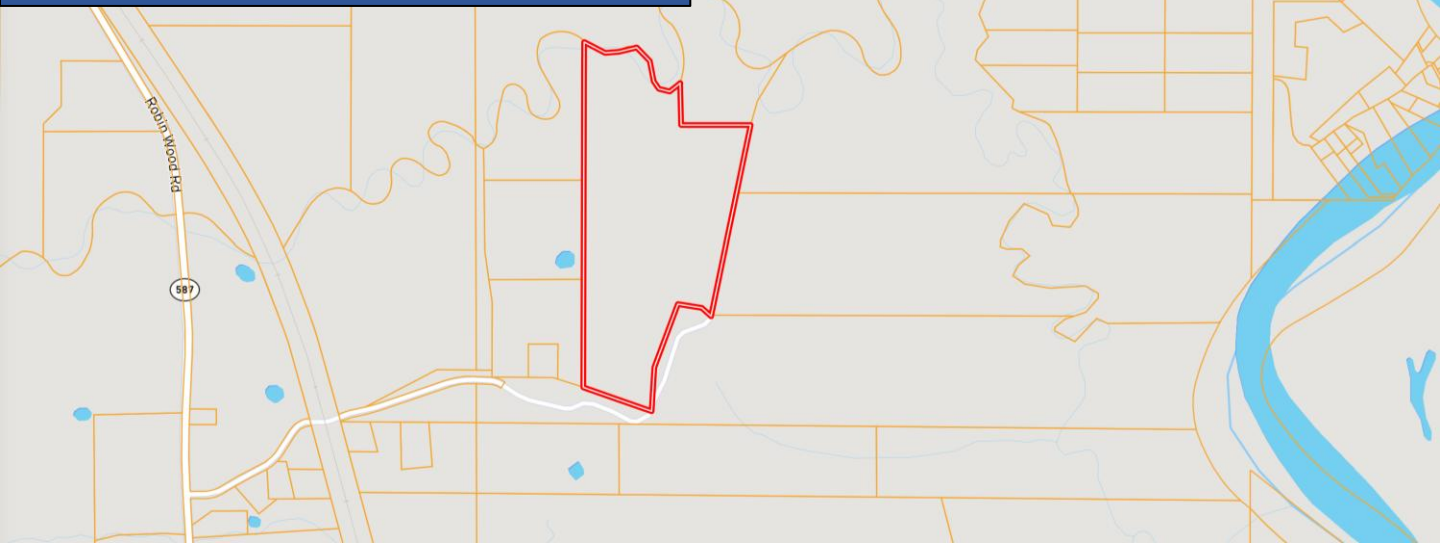
TomSmithLandandHomes.com



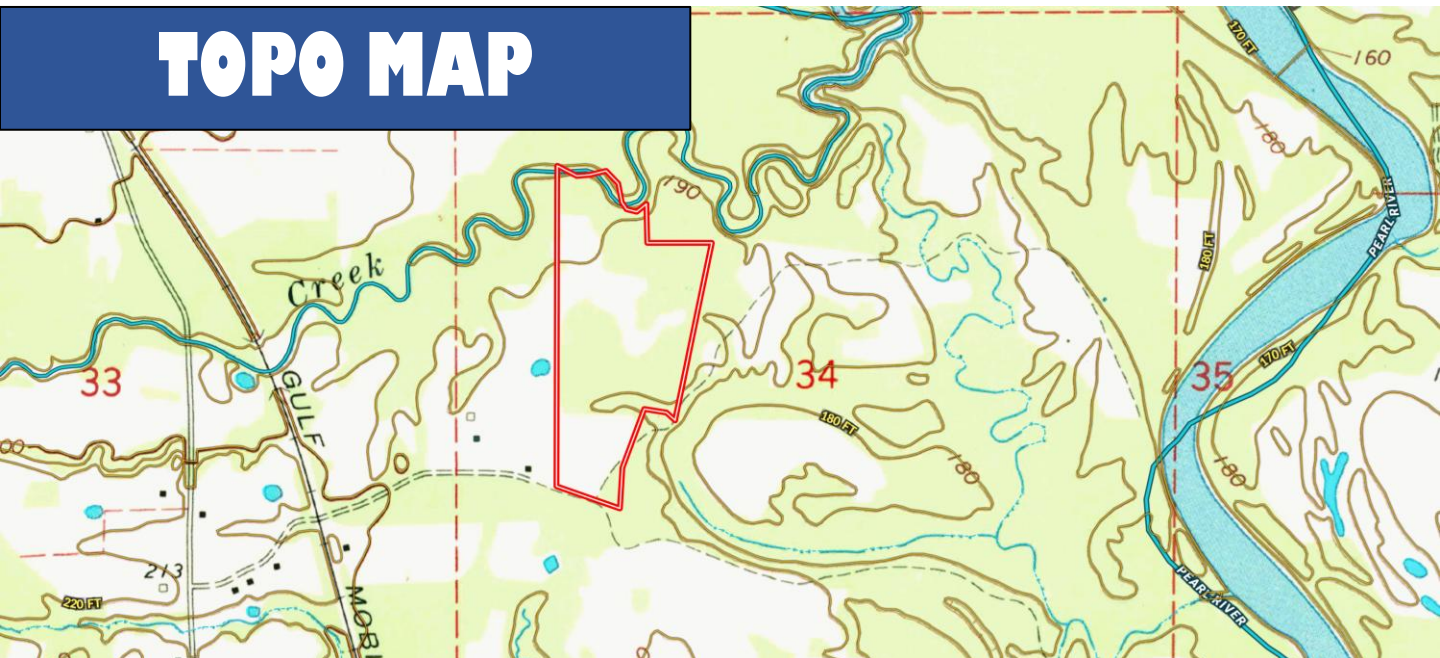
Expect More. Get More.



OWNERSHIP MAP



TOPO MAP



A Real Estate Expert
You Can Trust!

BRADY RICHARDSON

REALTOR®

O: 601.898.2772 C: 662.418.8791

Brady@TomSmithLand.com

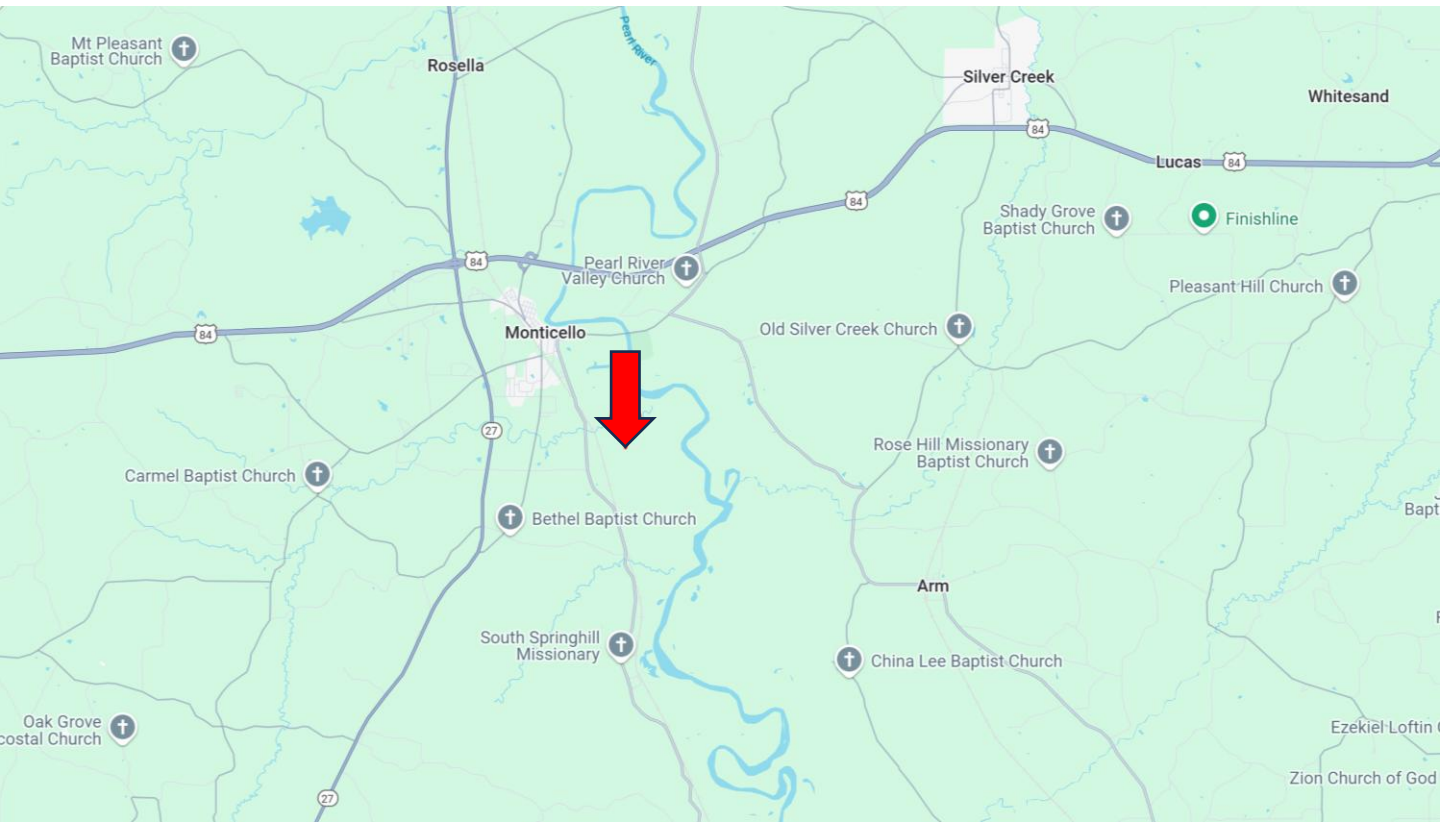
TomSmithLandandHomes.com



Expect More. Get More.



DIRECTIONAL MAP



Directions from Hwy 84 and Hwy 27 in Monticello, MS: Take the exit toward Downtown Monticello. Turn right onto Friendship Rd./Old Hwy 27 and travel 0.9 miles. Turn left onto Brookhaven St. and travel 0.4 miles. Turn left onto E Broad St. and travel 0.2 miles. Turn right onto MS-587 and travel 1.8 miles. Turn left onto Emmanuel Peyton Lane. After 0.7 miles, the property will be on the left.

[Google Map Link](#)



**BRADY
RICHARDSON**
REALTOR®

Office: 601.898.2772

Cell: 662.418.8791

Brady@TomSmithLand.com



Expect More. Get More.

A Real Estate Expert You Can Trust

TomSmithLandandHomes.com

Information is believed to be accurate but not guaranteed.

