

PRIVATE COUNTRY ESTATE ON 4.2+ ACRES IN OKTIBBEHA COUNTY
3237 Old West Point Road Starkville, MS 39759



[Drone Footage – Click Here](#)

\$595,000

Enjoy the convenience of being just 10 minutes from downtown Starkville and Mississippi State University. This spacious Oktibbeha County custom-built home was built in 1973 and features over 5,000 square feet of living space, including five bedrooms, four full baths, and a half bath, all situated on approximately 4.2 acres. The gated entrance ensures privacy, and the pier to Legion Lake adds a peaceful touch. With a pool, brick patio, and outdoor cooking area, the home offers excellent potential for entertaining. Whether you're looking for a permanent home or a game-day retreat, this property provides a quiet country setting in a developing area near Old West Point Road. Call Doyes or Ellen today to schedule a personal tour!



ELLEN SMITH
MANAGING BROKER

O: 601.898.2772 | C: 601.954.9395
Ellen@TomSmithHomes.com



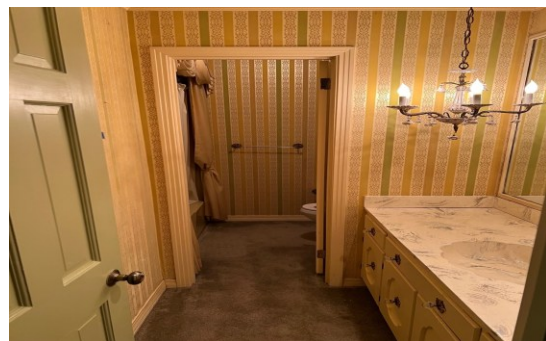
DOYES HOLLAND
REALTOR®

O: 662.268.6333 | C: 662.312.2165
DHolland@TomSmithLand.com

TomSmithLandandHomes.com

Information is believed to be accurate but not guaranteed.





ELLEN SMITH
MANAGING BROKER

O: 601.898.2772 | C: 601.954.9395
Ellen@TomSmithHomes.com



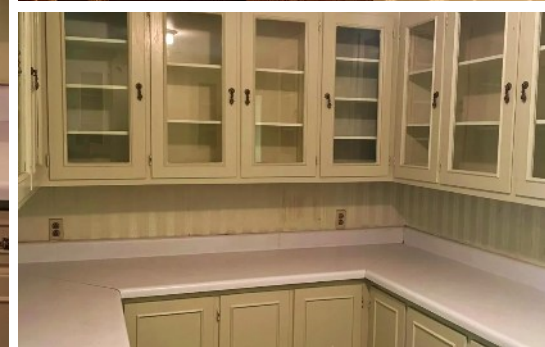
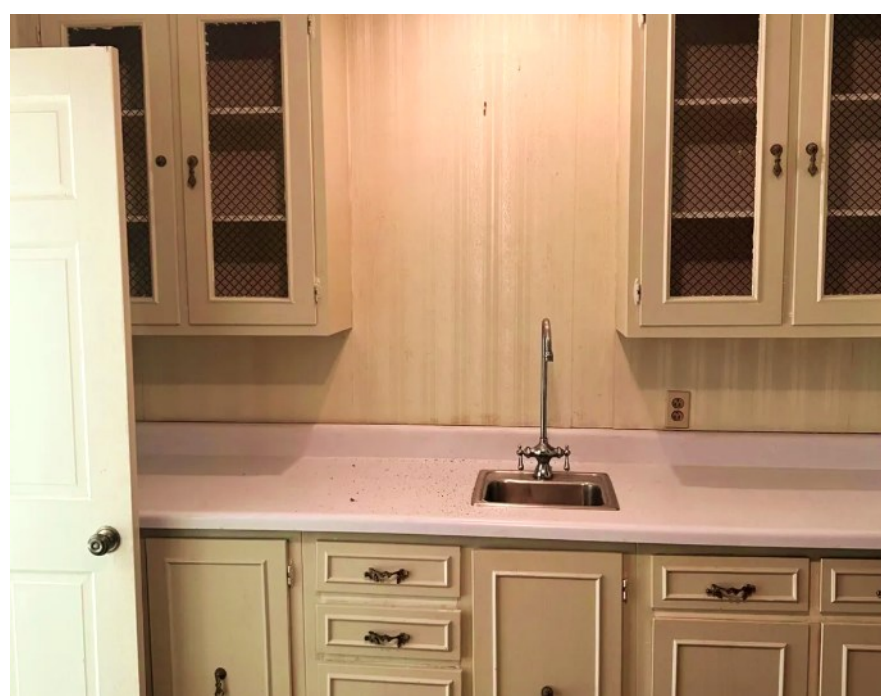
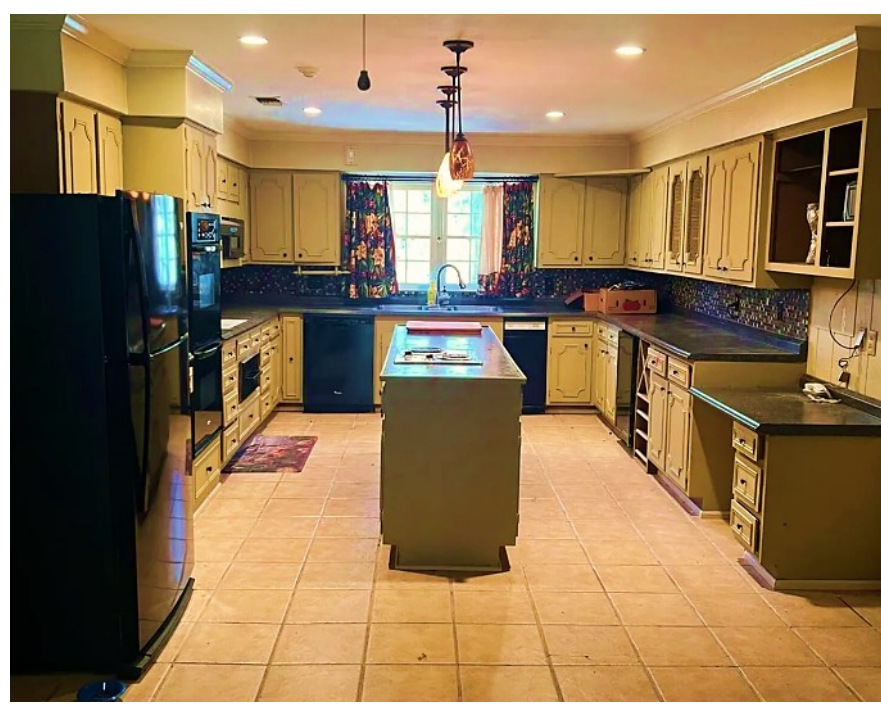
DOYES HOLLAND
REALTOR®

O: 662.268.6333 | C: 662.312.2165
DHolland@TomSmithLand.com

TomSmithLandandHomes.com

Information is believed to be accurate but not guaranteed.





ELLEN SMITH
MANAGING BROKER

O: 601.898.2772 | C: 601.954.9395
Ellen@TomSmithHomes.com



DOYES HOLLAND
REALTOR®

O: 662.268.6333 | C: 662.312.2165
DHolland@TomSmithLand.com

TomSmithLandandHomes.com

Information is believed to be accurate but not guaranteed.





ELLEN SMITH
MANAGING BROKER

O: 601.898.2772 | C: 601.954.9395
Ellen@TomSmithHomes.com



DOYES HOLLAND
REALTOR®

O: 662.268.6333 | C: 662.312.2165
DHolland@TomSmithLand.com

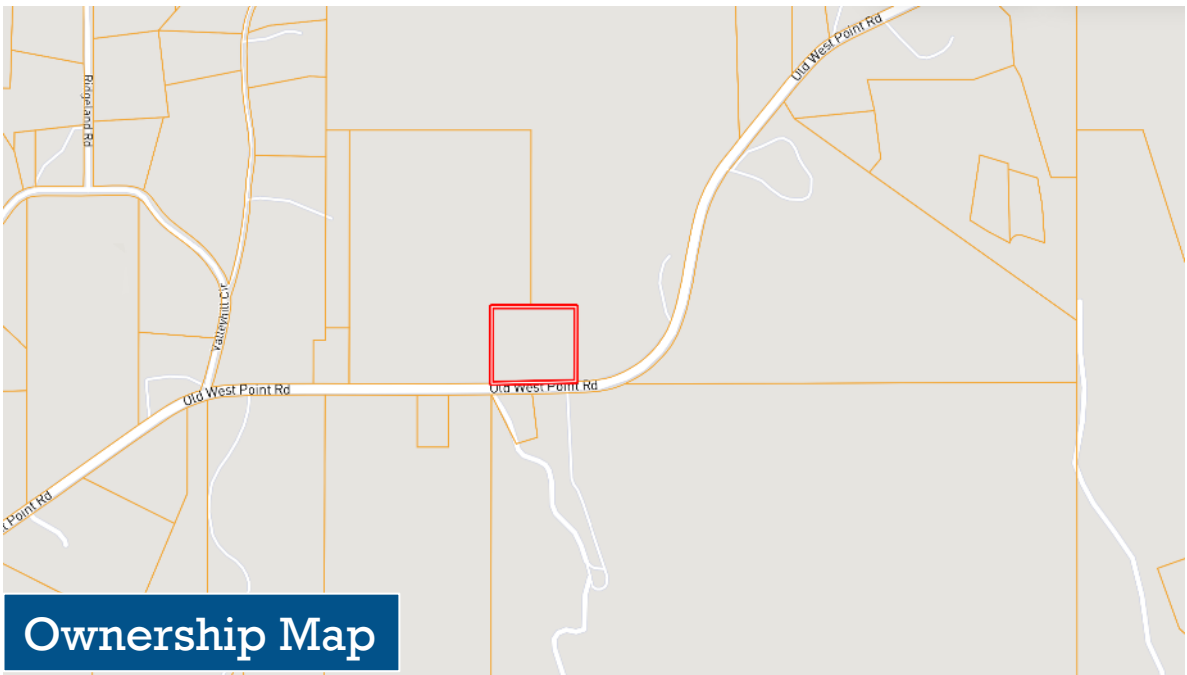
TomSmithLandandHomes.com

Information is believed to be accurate but not guaranteed.





Aerial Map



Ownership Map

[Click Here for the Landid Interactive Map](#)

ELLEN SMITH
MANAGING BROKER

O: 601.898.2772 | C: 601.954.9395
Ellen@TomSmithHomes.com



DOYES HOLLAND
REALTOR®

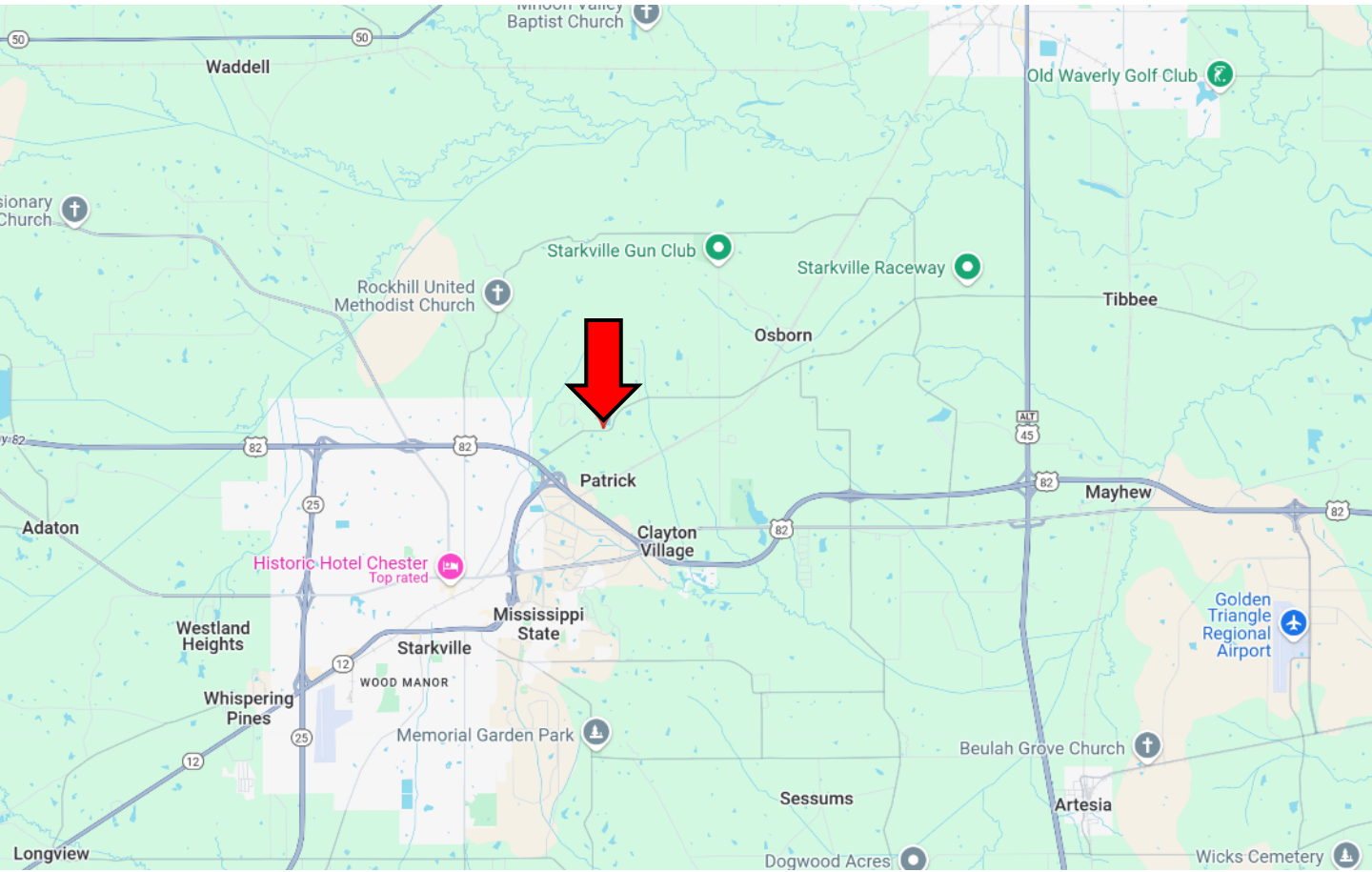
O: 662.268.6333 | C: 662.312.2165
DHolland@TomSmithLand.com

TomSmithLandandHomes.com

Information is believed to be accurate but not guaranteed.



Directional Map



Directions from the intersection of Hwy 182 West and Old West Point Road:
Travel Northeast on Old West Point Road for approximately 3.1 miles. The
gated entrance to the home will be on your left.
3237 Old West Point Road Starkville, MS – Click for Google Map Link



ELLEN SMITH
MANAGING BROKER

O: 601.898.2772 | C: 601.954.9395
Ellen@TomSmithHomes.com



DOYES HOLLAND
REALTOR[®]

O: 662.268.6333 | C: 662.312.2165
DHolland@TomSmithLand.com

TomSmithLandandHomes.com

Information is believed to be accurate but not guaranteed.

