

Newly Built 3 Bed, 2.5 Bath Home | 13 Redbud Road Cleveland, MS

\$317,000



Attention to detail shines in this newly built home in Bolivar County, MS! Step through the arched double doors into a welcoming foyer connecting to the open-concept living room, kitchen, and dining area. The kitchen is designed for style and function, featuring a spacious island, stainless steel appliances, and ample counter space and storage. The primary suite offers a generous walk-in closet and a luxurious bathroom with double sinks, a soaking tub, and a large walk-in shower. Need extra storage? The office could easily be converted into an additional closet for the primary suite. Two additional bedrooms share a hall bathroom with a double vanity and plenty of storage. The laundry room provides extra space for organizing cleaning supplies and equipment. Stained concrete floors throughout the home ensure durability and easy maintenance. Outside, the covered back porch is the perfect spot to relax and take in Delta sunsets over the open fields. A gas fireplace adds warmth and charm, making it a cozy retreat year-round. Don't miss your chance to experience the comfort of this beautiful home—call Tracey Bell today to schedule your private showing!



**TRACEY
BELL**

MANAGING BROKER

Office: 662.441.2500

Cell: 662.719.4720

Tracey@TomSmithLand.com



Expect More. Get More.

A Real Estate Expert You Can Trust

TomSmithLandandHomes.com

Information is believed to be accurate but not guaranteed.





**A Real Estate Expert
You Can Trust!**

TRACEY BELL

MANAGING BROKER

O: 662.441.2500 C: 662.719.4720

Tracey@TomSmithLand.com

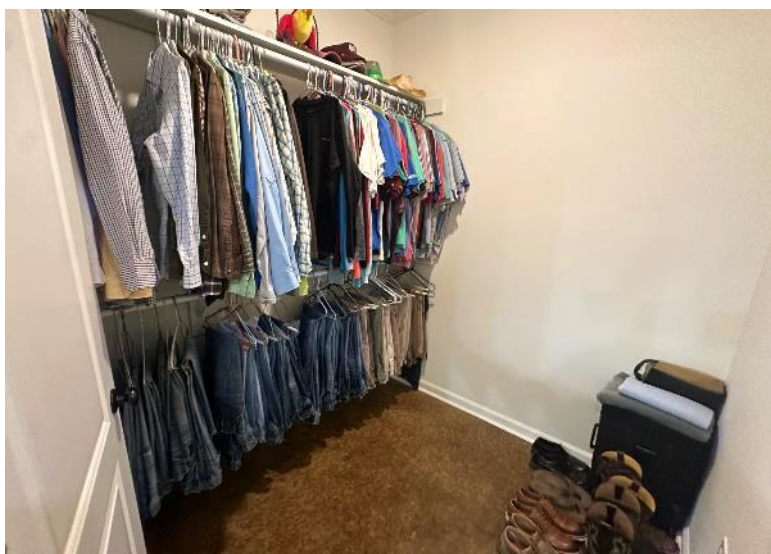
TomSmithLandandHomes.com

**Tom
Smith
LAND AND
HOMES**

Expect More. Get More.

LandReport
2011-2024
BEST
BROKERAGES

Information is believed to be accurate but not guaranteed.



**A Real Estate Expert
You Can Trust!**

TRACEY BELL

MANAGING BROKER

O: 662.441.2500 C: 662.719.4720

Tracey@TomSmithLand.com

TomSmithLandandHomes.com

**Tom
Smith
LAND AND
HOMES**

Expect More. Get More.

2011-2024
NATIONAL
BEST
BROKERAGES

Information is believed to be accurate but not guaranteed.



**A Real Estate Expert
You Can Trust!**

TRACEY BELL

MANAGING BROKER

O: 662.441.2500 C: 662.719.4720

Tracey@TomSmithLand.com

TomSmithLandandHomes.com

**Tom
Smith
LAND AND
HOMES**

Expect More. Get More.

LandReport
2011-2024
NATIONAL
BEST
BROKERAGES

Information is believed to be accurate but not guaranteed.



- Built in 2023
- Located outside Cleveland city limits
- 3 Bedrooms
- 2.5 Bathrooms
- Open Floorplan
- Foyer
- Large Kitchen Island & Pantry
- Wonderful Primary Suite
- Interior & Exterior Gas Fireplaces
- Stained Concrete Floors Throughout
- Fabulous Sunset Views
- 2 Car Garage
- 0.45± Acre Lot in Bolivar County, MS



A Real Estate Expert
You Can Trust!

TRACEY BELL

MANAGING BROKER

O: 662.441.2500 C: 662.719.4720

Tracey@TomSmithLand.com

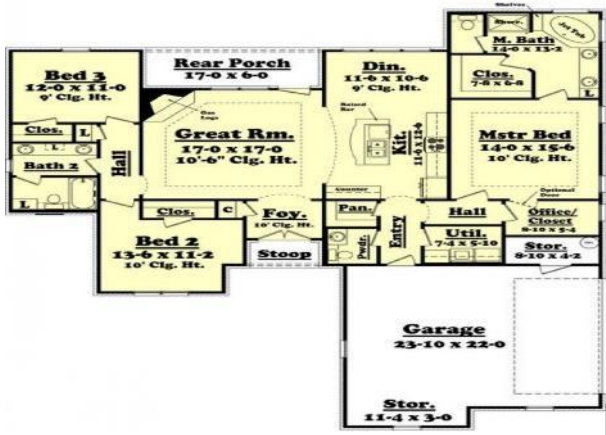
TomSmithLandandHomes.com

Tom Smith
LAND AND HOMES

Expect More. Get More.

LandAgent
2011-2024
NATIONAL
BEST
BROKERAGES

Information is believed to be accurate but not guaranteed.



A Real Estate Expert
You Can Trust!

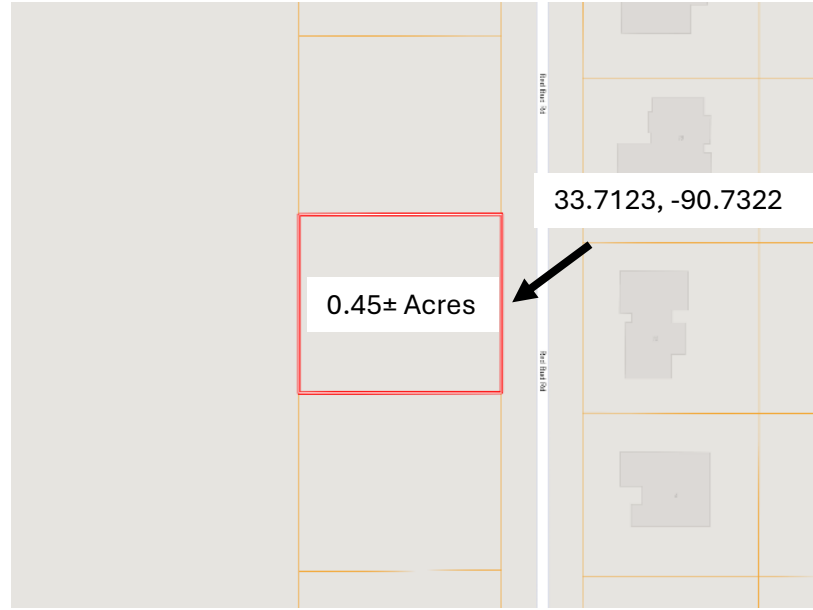
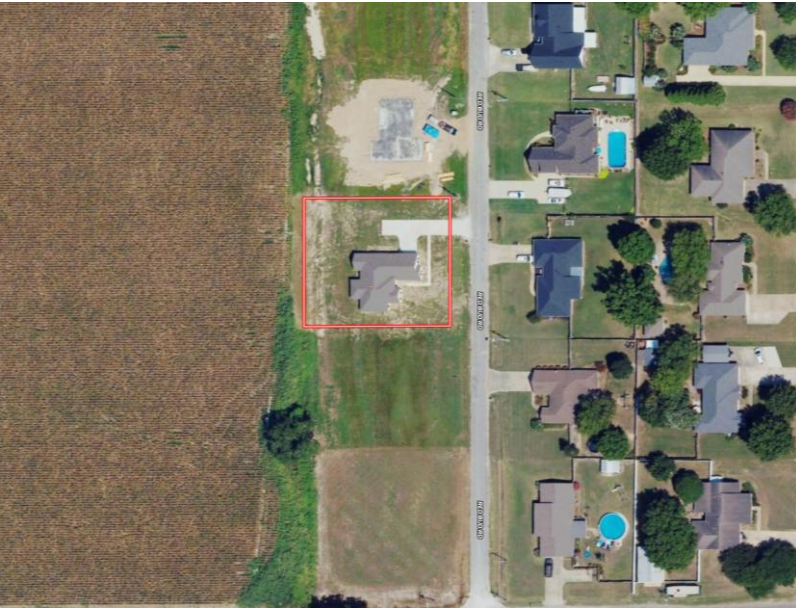


TRACEY BELL
 MANAGING BROKER
 O: 662.441.2500 C: 662.719.4720
 Tracey@TomSmithLand.com
 TomSmithLandandHomes.com

Expect More. Get More.

2011-2024
BEST
 BROKERAGES

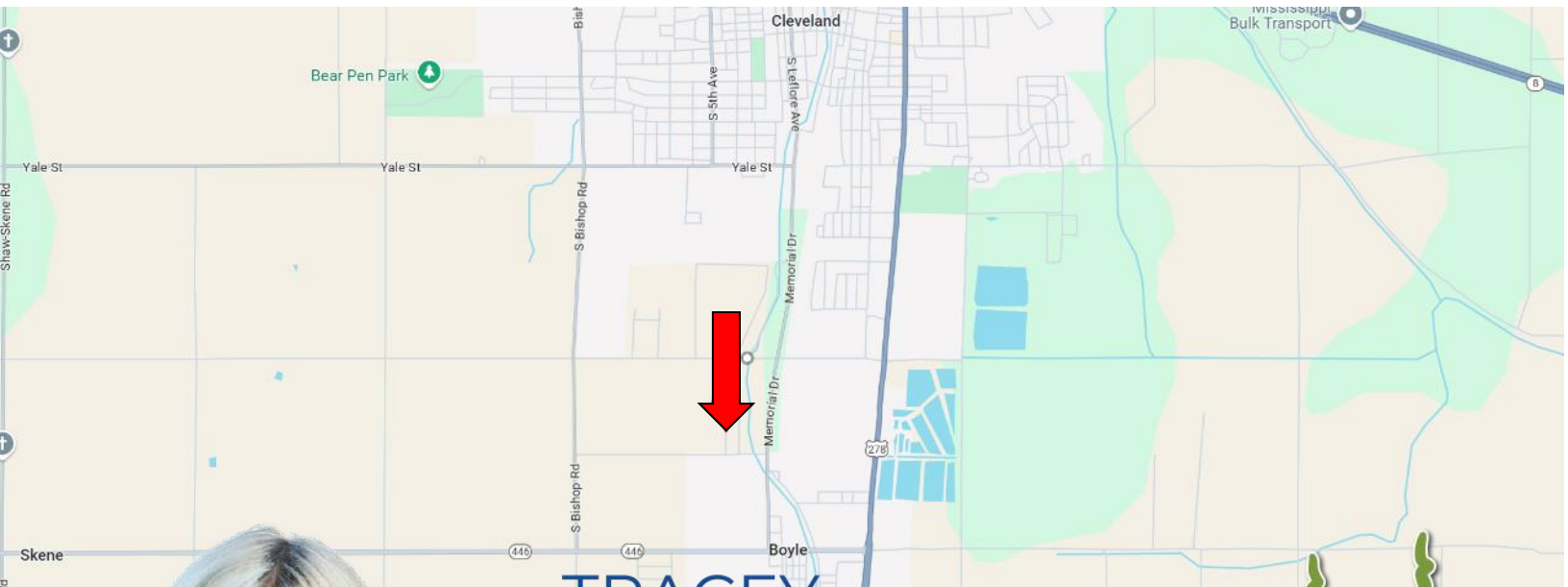
Information is believed to be accurate but not guaranteed.



Directions from Hwy 8 & Hwy 61 in Cleveland, MS: Travel south on Hwy 61 for 2.0 miles. Turn right onto Laughlin Road and travel 0.8 miles. Turn left onto Redbud Road. After 0.4 miles, the home will be on the right.

Address: 13 Redbud Road, Cleveland, MS 38730

Google Maps Link



**TRACEY
BELL**

MANAGING BROKER

Office: 662.441.2500

Cell: 662.719.4720

Tracey@TomSmithLand.com



Expect More. Get More.

A Real Estate Expert You Can Trust

TomSmithLandandHomes.com