

VERSATILE 14.18± ACRE SHARKEY COUNTY PROPERTY 1006 Dry Bend Road, Anguilla, MS 38721



This 14.18± acre property in Sharkey County, MS, offers a unique combination of farmland and functional workspace, making it an ideal investment for agricultural or commercial use. The tract includes approximately 10 acres of cultivatable land currently rented, providing potential for continued income or personal use. A standout feature of this property is the 7,200-square-foot shop/hangar, designed for maximum efficiency. With 20-foot ceilings and folding doors, it easily accommodates large equipment, while the concrete apron ensures a stable work surface even in wet conditions. An additional 4 acres provide ample space for parking or future development, allowing for expansion to suit various needs. Whether for farming, storage, or commercial use, this property is ready to meet your needs. Call Bruce today to schedule your tour!



BRUCE WEST

ALC®, ASSOCIATE BROKER
ACCREDITED LAND CONSULTANT

Office: 662.441.2500

Cell: 662.873.3007

Bruce@TomSmithLand.com



Expect More. Get More.

A Real Estate Expert You Can Trust

TomSmithLandandHomes.com

Information is believed to be accurate but not guaranteed.





A Real Estate Expert You Can Trust!

BRUCE WEST

ALC®, ASSOCIATE BROKER
ACCREDITED LAND CONSULTANT

O: 662.441.2500 C: 662.873.3007

Bruce@TomSmithLand.com

TomSmithLandandHomes.com



Expect More. Get More.



Information is believed to be accurate but not guaranteed.



A Real Estate Expert You Can Trust!

BRUCE WEST

ALC®, ASSOCIATE BROKER
ACCREDITED LAND CONSULTANT

O: 662.441.2500 C: 662.873.3007

Bruce@TomSmithLand.com

TomSmithLandandHomes.com



Expect More. Get More.



Information is believed to be accurate but not guaranteed.

Aerial Map



land id. [Click Here for the LandId Interactive Map Link](#)

A Real Estate Expert
You Can Trust!

BRUCE WEST

ALC®, ASSOCIATE BROKER
ACCREDITED LAND CONSULTANT

O: 662.441.2500 C: 662.873.3007

Bruce@TomSmithLand.com

TomSmithLandandHomes.com

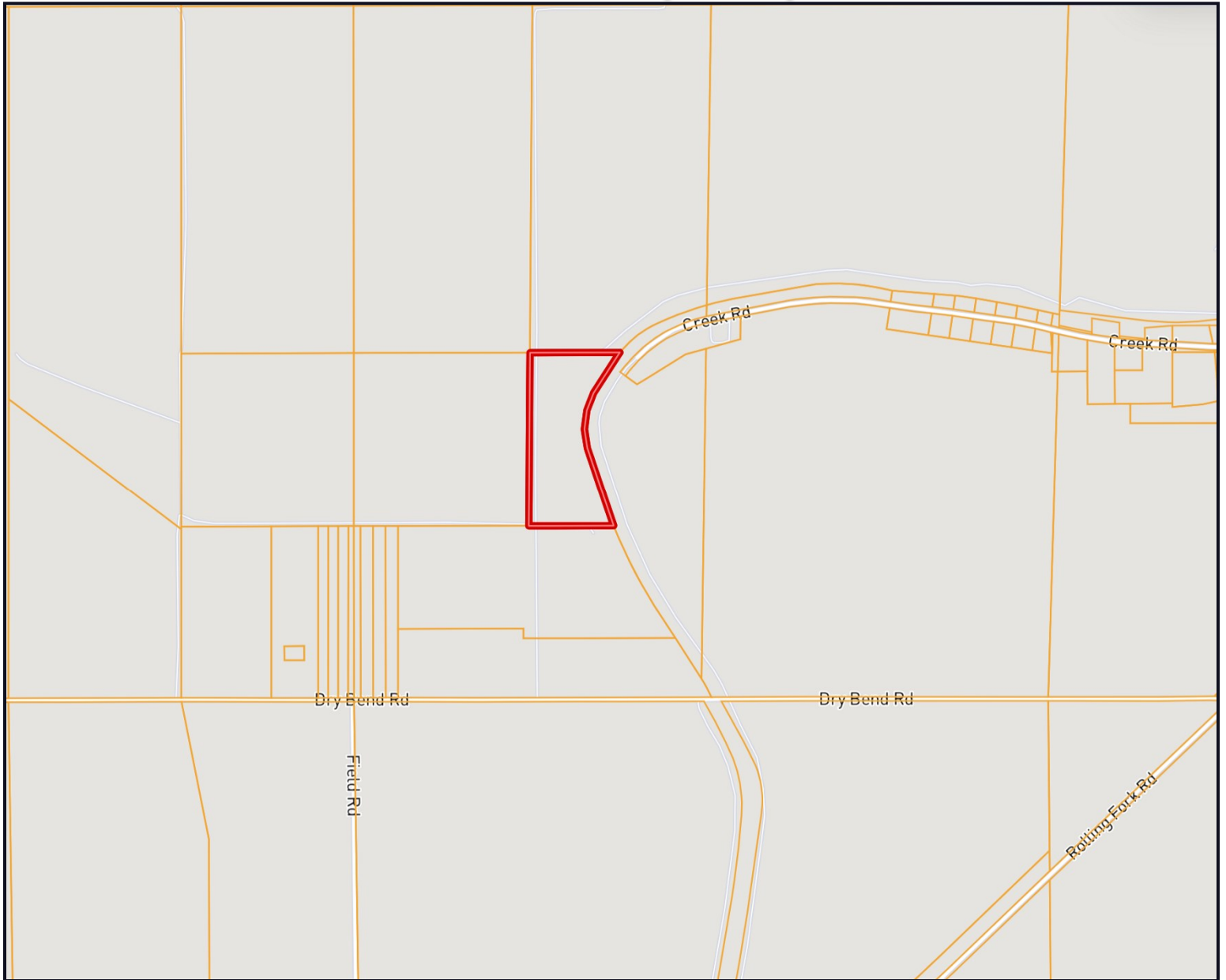


Expect More. Get More.



Information is believed to be accurate but not guaranteed.

Ownership Map



A Real Estate Expert
You Can Trust!

BRUCE WEST

ALC[®], ASSOCIATE BROKER
ACCREDITED LAND CONSULTANT

O: 662.441.2500 C: 662.873.3007

Bruce@TomSmithLand.com

TomSmithLandandHomes.com

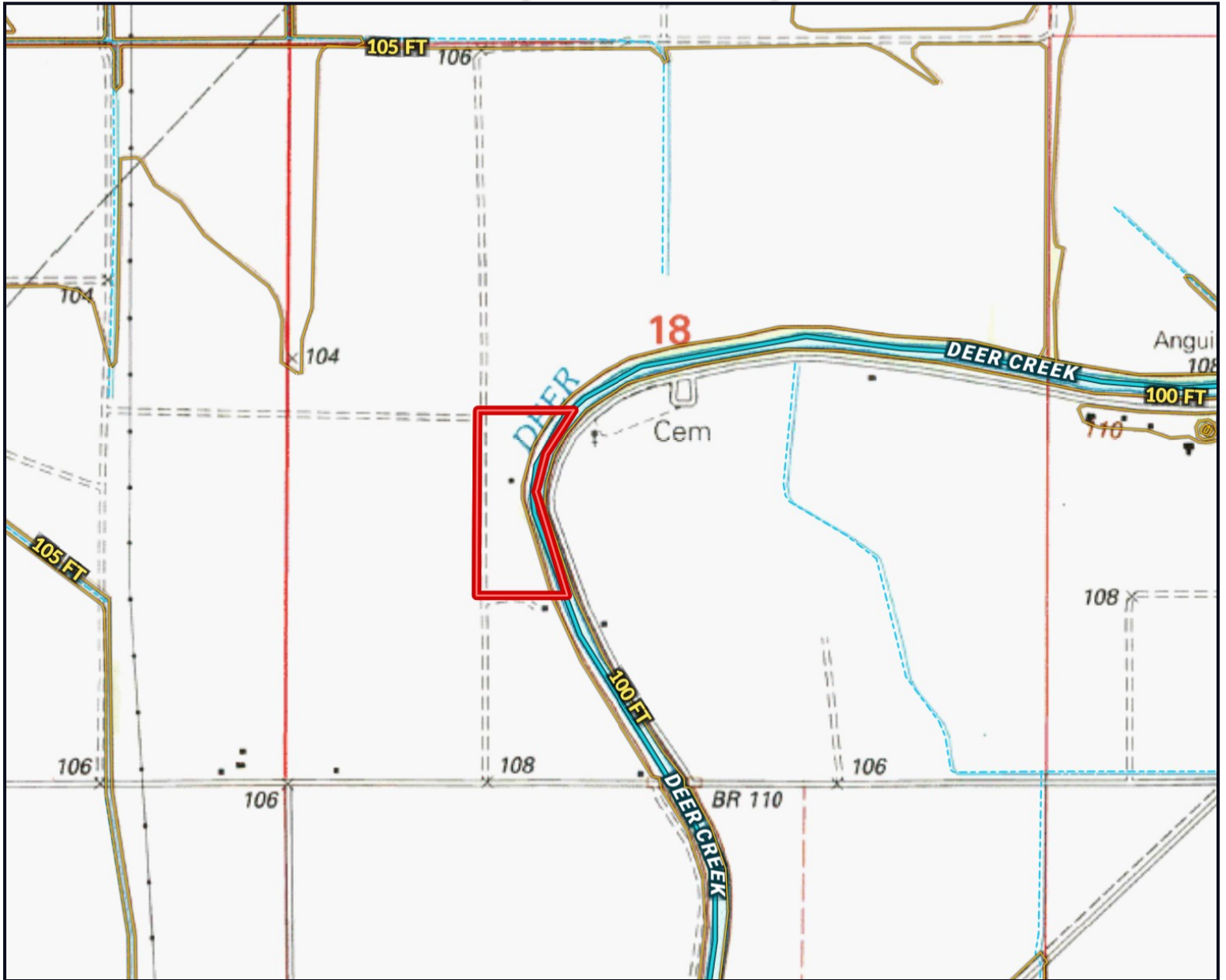


Expect More. Get More.



Information is believed to be accurate but not guaranteed.

Topo Map



A Real Estate Expert
You Can Trust!

BRUCE WEST

ALC®, ASSOCIATE BROKER
ACCREDITED LAND CONSULTANT

O: 662.441.2500 C: 662.873.3007

Bruce@TomSmithLand.com

TomSmithLandandHomes.com

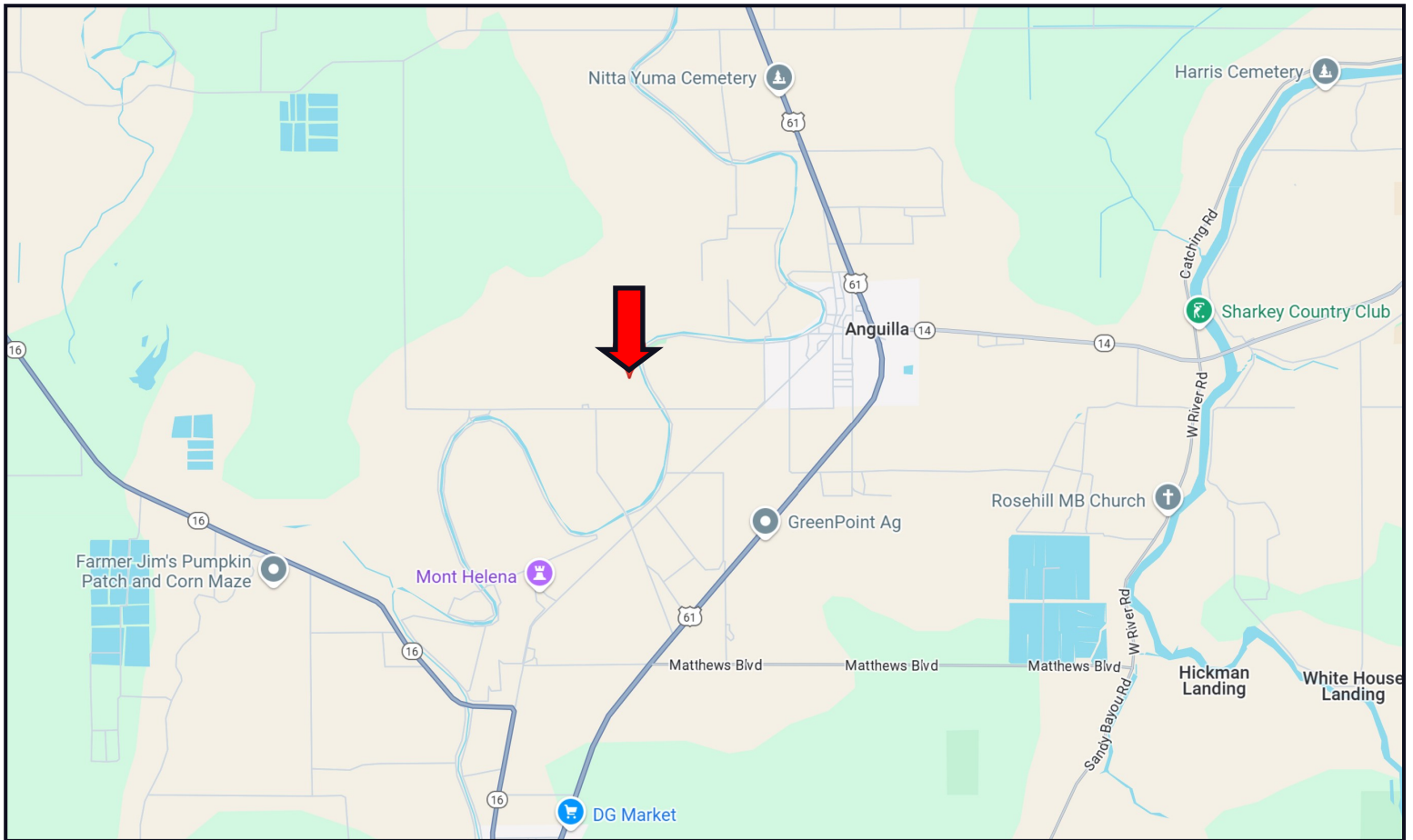


Expect More. Get More.

Information is believed to be accurate but not guaranteed.



Directional Map



Directions from the intersection of Hwy 61 and Hwy 14 in Anguilla, MS: Turn onto Holland Street and travel 0.3 miles. Turn left onto Rolling Fork Road and travel 0.9 miles. Turn left onto Dry Bend Road and travel 1 mile. Turn right onto the dirt road. After 0.3 miles, the property will be on your right.

1006 Dry Bend Road, Anguilla, MS 38721—Click for Google Map Link



**BRUCE
WEST**

ALC®, ASSOCIATE BROKER
ACCREDITED LAND CONSULTANT

Office: 662.441.2500

Cell: 662.873.3007

Bruce@TomSmithLand.com



Expect More. Get More.

A Real Estate Expert You Can Trust

TomSmithLandandHomes.com

Information is believed to be accurate but not guaranteed.

