

7,082 Sqft Commercial Building Coahoma County / \$850,000

819 Desoto Avenue Clarksdale, MS 38614



This exceptional property, located at 819 Desoto Avenue in Clarksdale, MS, is now available for \$850,000. Situated on 1.03 acres in Coahoma County, the 7,082-square-foot metal building—constructed in 2012—houses three thriving business spaces. The building accommodates a laundromat generating between \$6,000 and \$7,000 monthly, a liquor store earning \$30,000 to \$40,000 monthly, and a deli renting for \$1,000 monthly, with tenants covering all additional expenses. Situated in a prime location at the Blues Crossroads behind ABE's BBQ, this ideal location should attract the steady flow of tourists visiting Clarksdale, the renowned birthplace of the blues. With convenient access via Hwy 49, visitors can easily explore local historic sites, including the Delta Blues Museum and the iconic crossroads of Highways 61 and 49. Contact Anthony Steen today to schedule a private showing and discover the potential of this remarkable investment opportunity.



**ANTHONY
STEEN**

REALTOR®

Office: 601.898.2772

Cell: 662.645.5151

Anthony@TomSmithLand.com



Expect More. Get More.

A Real Estate Expert You Can Trust

TomSmithLandandHomes.com

Information is believed to be accurate but not guaranteed.





A Real Estate Expert *You Can Trust!*

ANTHONY STEEN
REALTOR®
O: 601.898.2772 C: 662.645.5151
Anthony@TomSmithLand.com
TomSmithLandandHomes.com

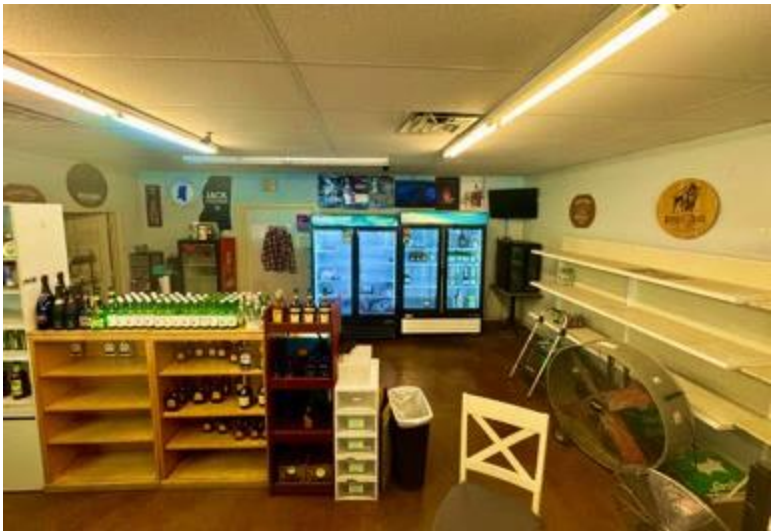




A Real Estate Expert You Can Trust!

ANTHONY STEEN
REALTOR®
O: 601.898.2772 C: 662.645.5151
Anthony@TomSmithLand.com
TomSmithLandandHomes.com





A Real Estate Expert You Can Trust!

ANTHONY STEEN
REALTOR®
O: 601.898.2772 C: 662.645.5151
Anthony@TomSmithLand.com
TomSmithLandandHomes.com



Expect More. Get More.





A Real Estate Expert
You Can Trust!

ANTHONY STEEN
REALTOR®
O: 601.898.2772 C: 662.645.5151
Anthony@TomSmithLand.com
TomSmithLandandHomes.com

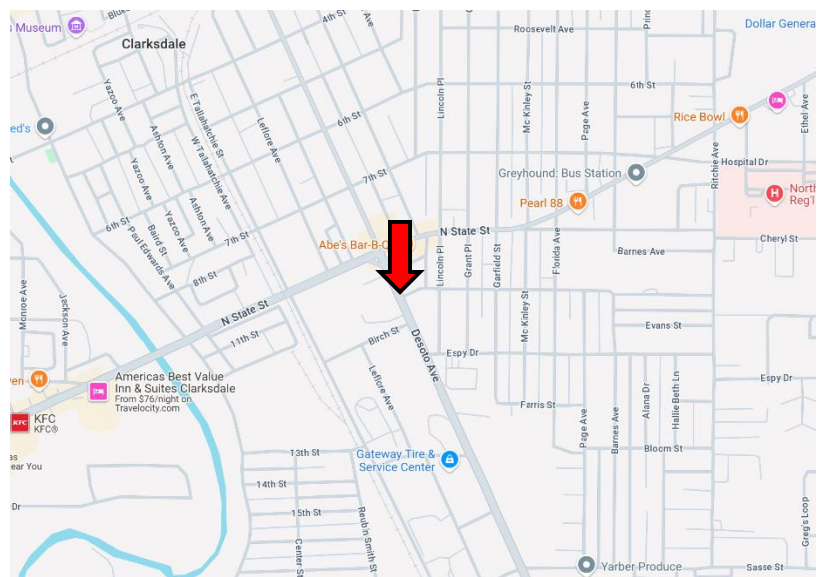
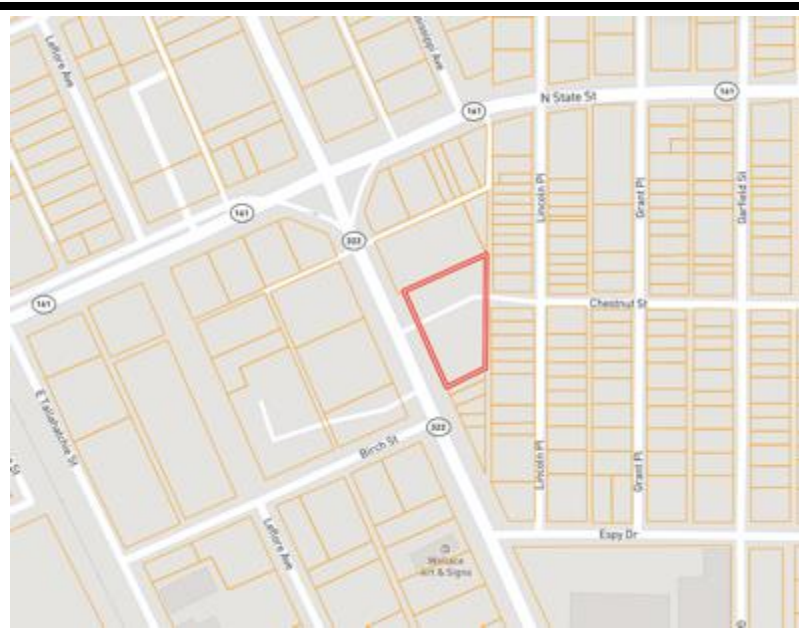
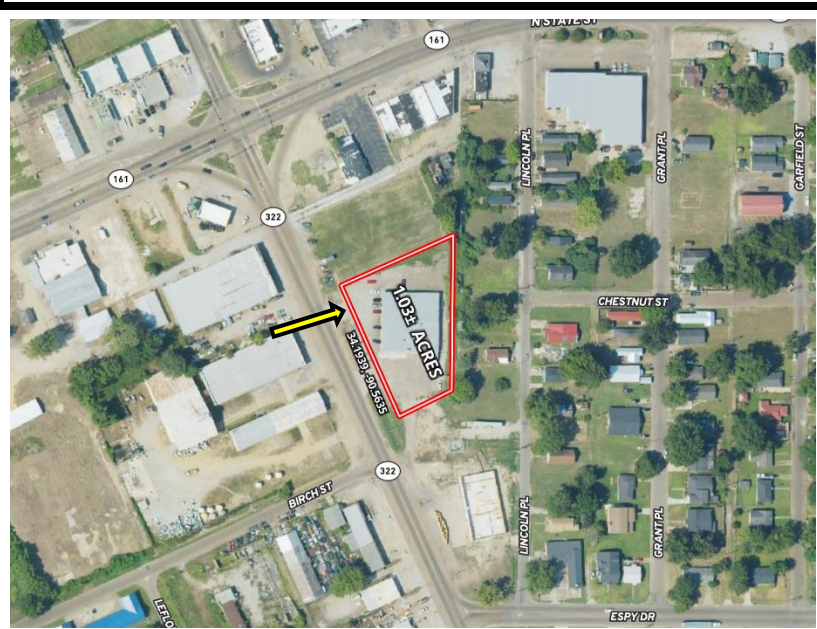


Expect More. Get More.



Information is believed to be accurate but not guaranteed.

MAPS / *Click for the Interactive Map*



**Address: 819 Desoto Avenue
Clarksdale, MS 38614**

**Directions from US-61 & US 49 in
Clarksdale, MS: Take the Hwy 49
exit for towards Clarksdale. Merge
onto Desoto Ave. and travel
1.7 miles. The building will be on
the right.**

[Google Map Link](#)



**ANTHONY
STEEN**
REALTOR®
Office: 601.898.2772
Cell: 662.645.5151
Anthony@TomSmithLand.com



A Real Estate Expert You Can Trust

TomSmithLandandHomes.com

Information is believed to be accurate but not guaranteed.

