

Bolivar County Commercial Building



**1028 S Davis Ave
Cleveland, MS 38732
\$375,000**

Located at 1028 S Davis Ave, just off Hwy 61, this spacious commercial building offers high visibility and easy accessibility. Built in 2003, it features 4,369 sq. ft. of interior space on a 0.85± acre lot, with a 0.48-acre parking area that accommodates 35-40 vehicles—perfect for customers and clients.

With its versatile layout, this property presents endless possibilities. Whether you envision a restaurant, professional office, or another thriving business, a little creativity can transform this space into a hub of activity.

This is more than just a building—it's an investment in the future. Don't miss this opportunity to bring your vision to life! Contact Anthony Steen today to schedule a private viewing.



**ANTHONY
STEEN**
REALTOR®

Office: 601.898.2772

Cell: 662.645.5151

Anthony@TomSmithLand.com



Expect More. Get More.

A Real Estate Expert You Can Trust

TomSmithLandandHomes.com

Information is believed to be accurate but not guaranteed.





A Real Estate Expert *You Can Trust!*

ANTHONY STEEN
REALTOR®
O: 601.898.2772 C: 662.645.5151
Anthony@TomSmithLand.com
TomSmithLandandHomes.com



Expect More. Get More.





A Real Estate Expert
You Can Trust!

ANTHONY STEEN
REALTOR®
O: 601.898.2772 C: 662.645.5151
Anthony@TomSmithLand.com
TomSmithLandandHomes.com

Tom Smith
LAND AND
HOMES
Expect More. Get More.

LandReport
2011-2024
BEST
BROKERAGES

Information is believed to be accurate but not guaranteed.



A Real Estate Expert
You Can Trust!

ANTHONY STEEN
REALTOR®
O: 601.898.2772 C: 662.645.5151
Anthony@TomSmithLand.com
TomSmithLandandHomes.com



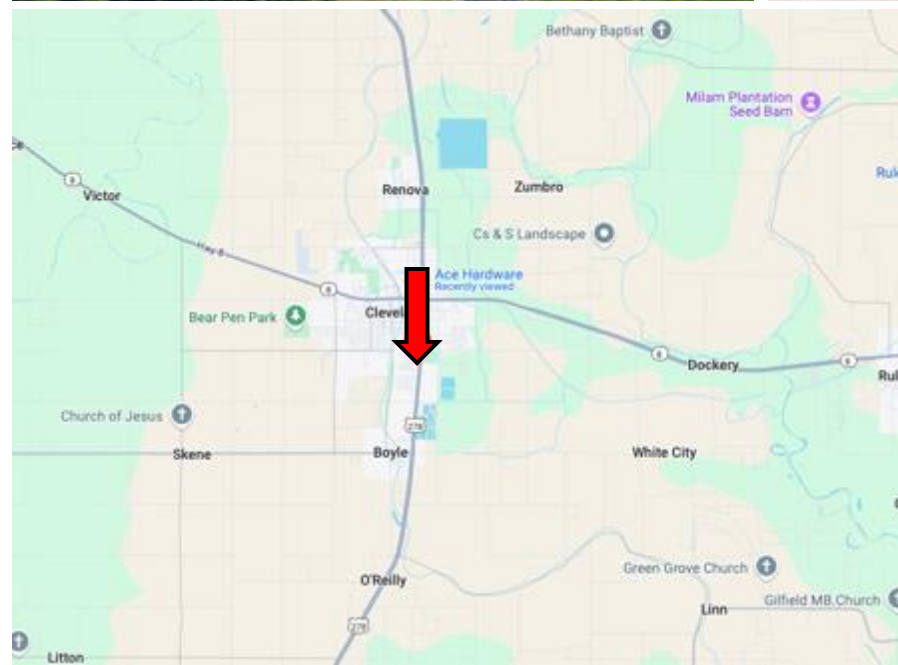
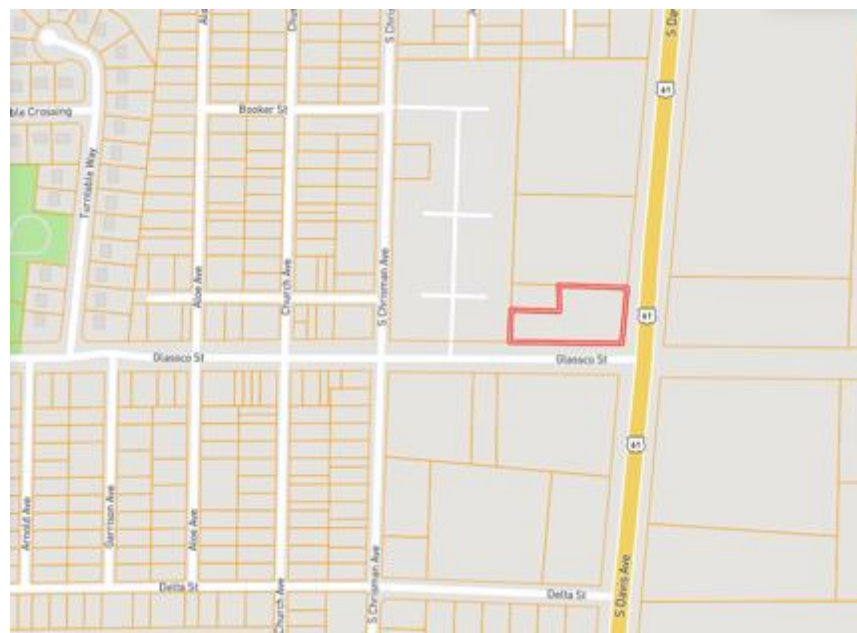
Expect More. Get More.



Information is believed to be accurate but not guaranteed.

MAPS

[Click for the Interactive Map](#)



Address: 1028 S Davis Ave, Cleveland, MS 38732

Directions from US-61 & MS-8 in Cleveland, MS: Travel south on N Davis Ave for 1.2 miles. Turn right onto Glassco St. After 200 feet, the building will be on the right.

Google Map Link



ANTHONY STEEN

REALTOR®

Office: 601.898.2772

Cell: 662.645.5151

Anthony@TomSmithLand.com



Expect More. Get More.

A Real Estate Expert You Can Trust

TomSmithLandandHomes.com

Information is believed to be accurate but not guaranteed.

