

Where the Delta Meets the Hills

132.2± Acres in Yazoo County, MS | \$422,200



DRONE VIDEO FOOTAGE

Looking for the best of both worlds? This unique 132.2± acre property in Yazoo County offers both the Delta and the Hills in one incredible location. You'll find established shooting lanes and prime deer hunting opportunities on the Delta side. Across HWY 49 E, the Hills provide the perfect homesite with stunning views overlooking the Delta, where you can enjoy breathtaking sunsets. Whether you're looking for a hunting retreat or a place to build your dream home, this property delivers. Call Charlie Heinsz today to schedule your private showing!



**CHARLIE
HEINSZ**

REALTOR®

Office: 662.441.2500

Cell: 662.719.7218

Charlie@TomSmithLand.com



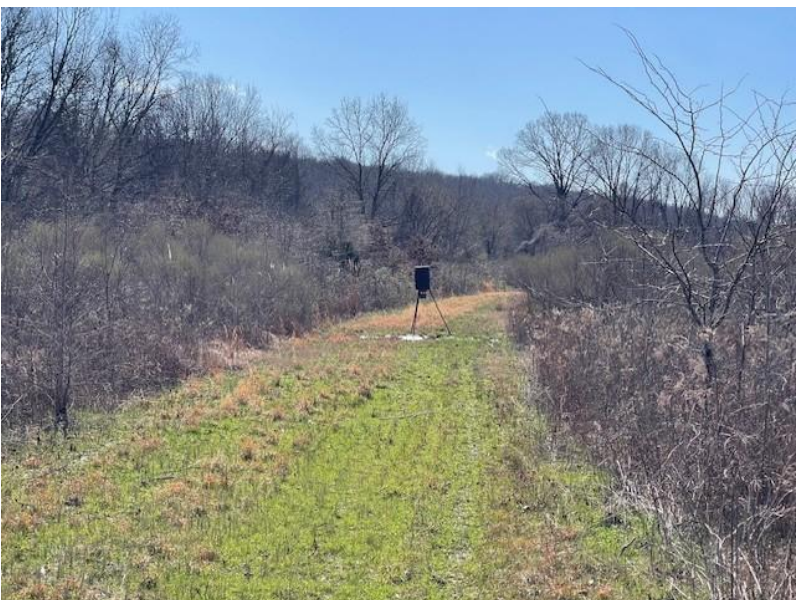
Expect More. Get More.

A Real Estate Expert You Can Trust

TomSmithLandandHomes.com

Information is believed to be accurate but not guaranteed.





CHARLIE HEINSZ

REALTOR®

Office: 662.441.2500

Cell: 662.719.7218

Charlie@TomSmithLand.com

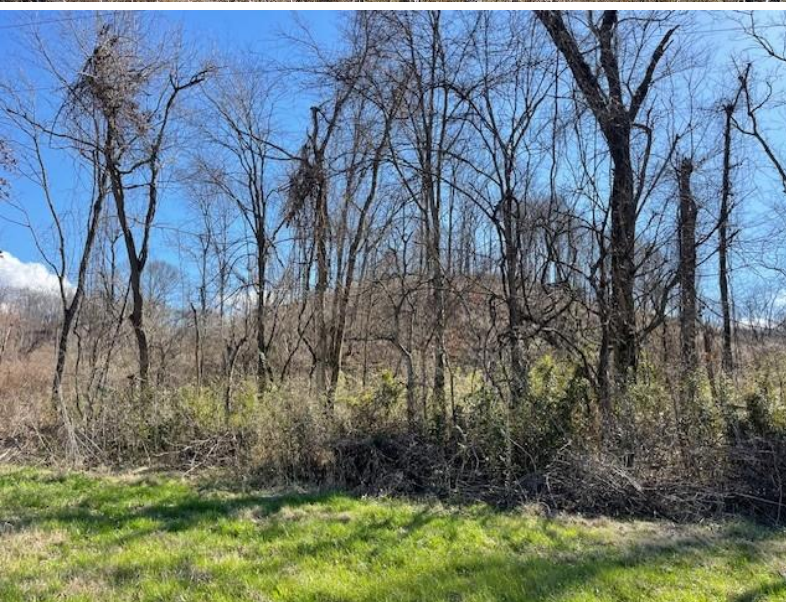


A Real Estate Expert You Can Trust

TomSmithLandandHomes.com

Information is believed to be accurate but not guaranteed.





CHARLIE HEINSZ

REALTOR®

Office: 662.441.2500

Cell: 662.719.7218

Charlie@TomSmithLand.com



A Real Estate Expert You Can Trust

TomSmithLandandHomes.com

Information is believed to be accurate but not guaranteed.





CHARLIE HEINSZ

REALTOR®

Office: 662.441.2500

Cell: 662.719.7218

Charlie@TomSmithLand.com



A Real Estate Expert You Can Trust

TomSmithLandandHomes.com

Information is believed to be accurate but not guaranteed.





AERIAL MAP

CHARLIE HEINSZ

REALTOR®

Office: 662.441.2500

Cell: 662.719.7218

Charlie@TomSmithLand.com

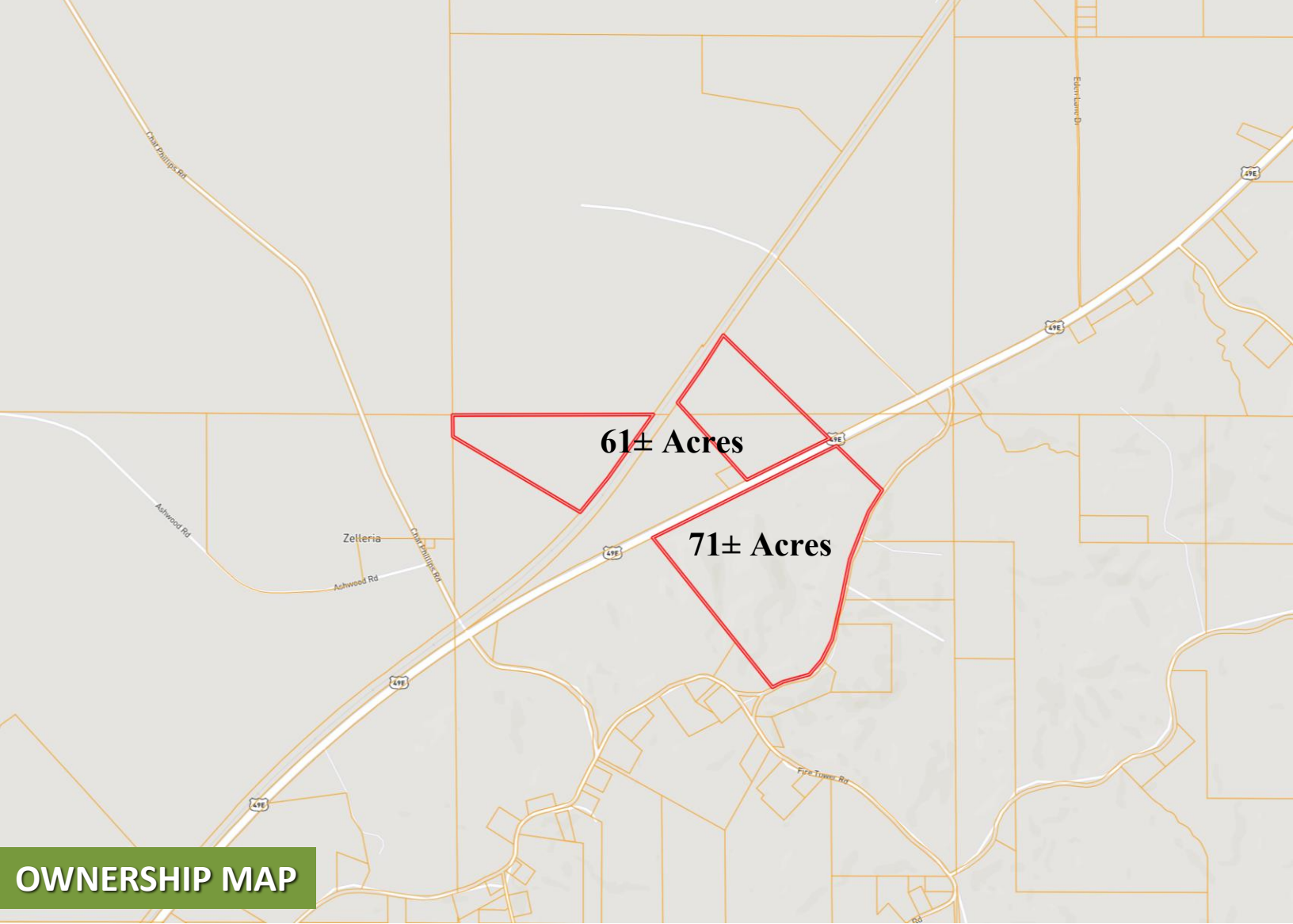


A Real Estate Expert You Can Trust

TomSmithLandandHomes.com

Information is believed to be accurate but not guaranteed.





OWNERSHIP MAP



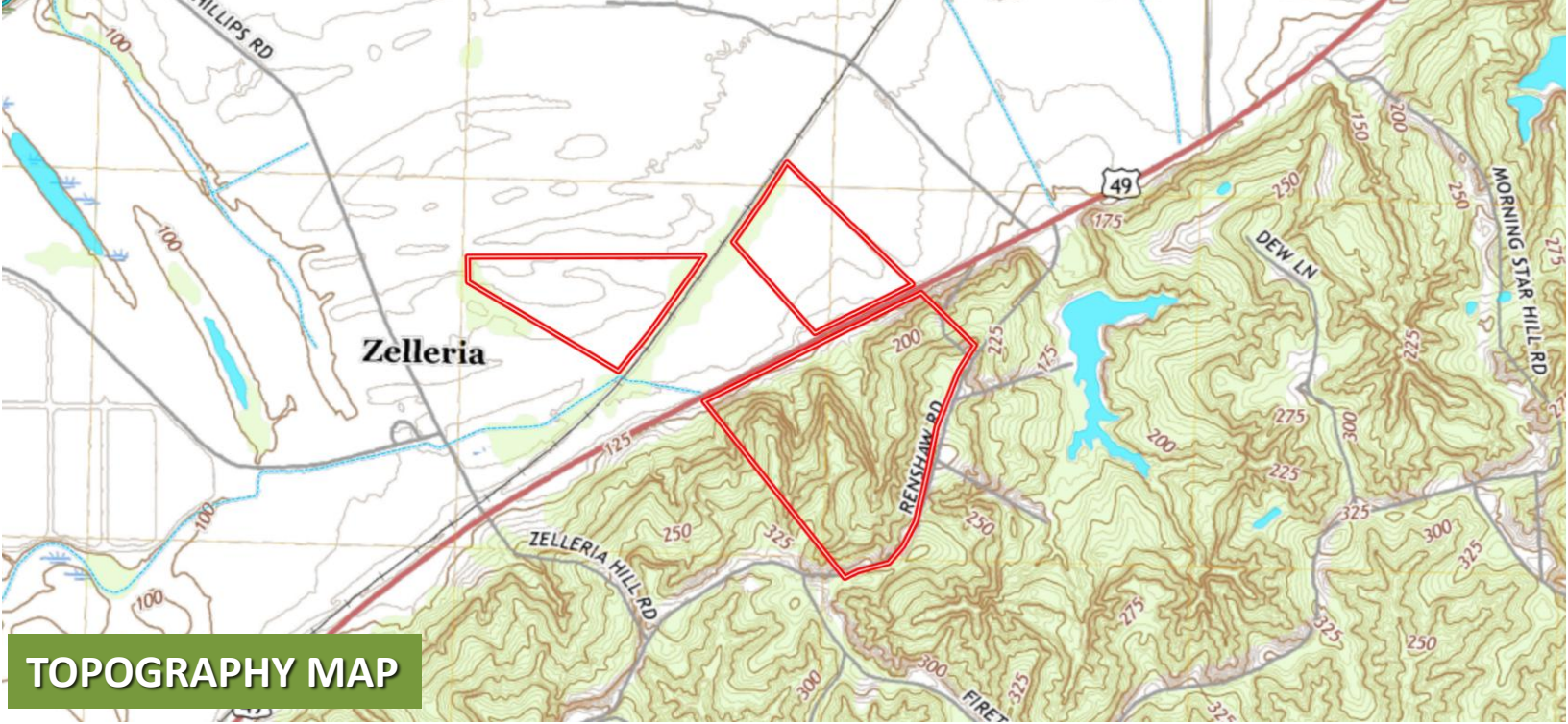
CHARLIE HEINSZ
REALTOR®
Office: 662.441.2500
Cell: 662.719.7218
Charlie@TomSmithLand.com



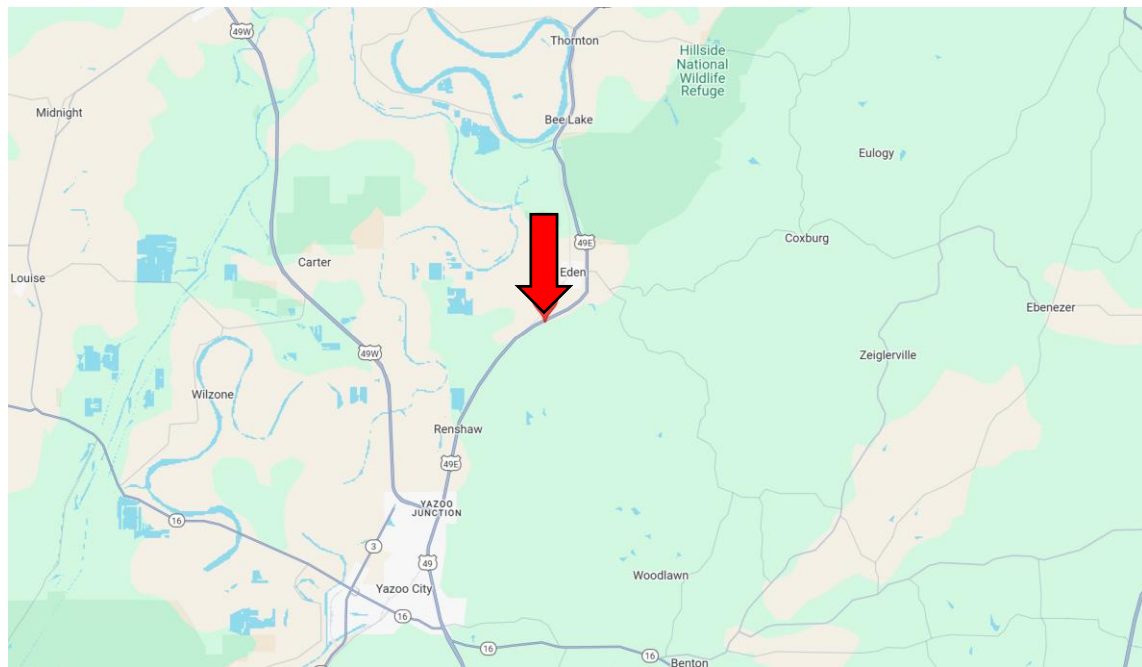
A Real Estate Expert You Can Trust
TomSmithLandandHomes.com

Information is believed to be accurate but not guaranteed.





TOPOGRAPHY MAP



land id. [Click Here for the Interactive Map Link](#)

Directions from Hwy 49 & Haley Barbour Pkwy in Yazoo City, MS: Travel north on HWY 49 E for 0.7 miles. The property in the Hills will be on the right, and in 0.2 miles, the property in the Delta will be on the left. **Click for Google Maps.**



CHARLIE HEINSZ
 REALTOR®
 Office: 662.441.2500
 Cell: 662.719.7218
 Charlie@TomSmithLand.com



A Real Estate Expert You Can Trust
 TomSmithLandandHomes.com

Information is believed to be accurate but not guaranteed.

