

MOVE-IN READY MOBILE HOME NEAR GRENADA LAKE

85 Gum Rd, Coffeeville, MS 38922



\$149,999

This like-new mobile home offers comfort and convenience in Grenada County—just two minutes from Grenada Lake, perfect for fishing, boating, and outdoor activities. The home features an open floor plan with three bedrooms and two bathrooms. The living area seamlessly connects to the dining space and kitchen, creating an inviting setting for entertaining. The kitchen features a beautiful island, plenty of storage, a pantry, and a sliding glass door that opens to a deck, ideal for morning coffee or evening relaxation. The primary suite includes a spacious walk-in closet, while the primary bathroom offers a double vanity, a shower, and a bathtub for ultimate comfort. Contact Anthony Steen today to schedule a private showing and explore all this home has to offer!



**ANTHONY
STEEN**
REALTOR®

Office: 601.898.2772

Cell: 662.645.5151

Anthony@TomSmithLand.com



A Real Estate Expert You Can Trust

TomSmithLandandHomes.com

Information is believed to be accurate but not guaranteed.





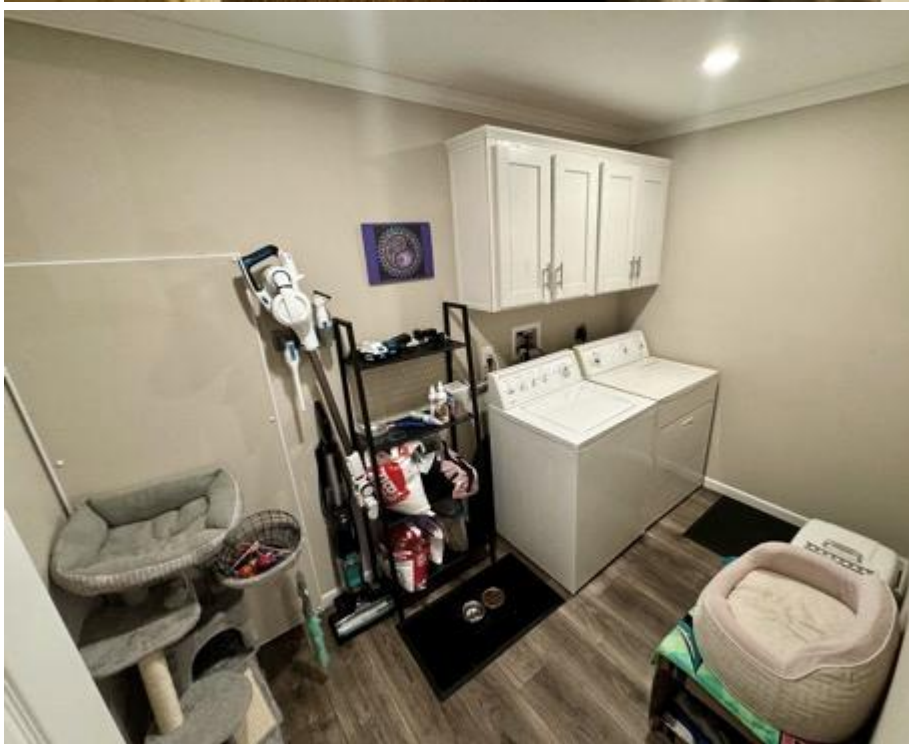
A Real Estate Expert
You Can Trust!

ANTHONY STEEN
REALTOR®
O: 601.898.2772 C: 662.645.5151
Anthony@TomSmithLand.com
TomSmithLandandHomes.com

Tom Smith
LAND AND HOMES
Expect More. Get More.

LandReport
2011-2024
BEST
BROKERAGES

Information is believed to be accurate but not guaranteed.



A Real Estate Expert
You Can Trust!

ANTHONY STEEN
REALTOR®
O: 601.898.2772 C: 662.645.5151
Anthony@TomSmithLand.com
TomSmithLandandHomes.com

Tom Smith
LAND AND HOMES
Expect More. Get More.

LandReport
2011-2024
BEST
BROKERAGES

Information is believed to be accurate but not guaranteed.



A Real Estate Expert
You Can Trust!

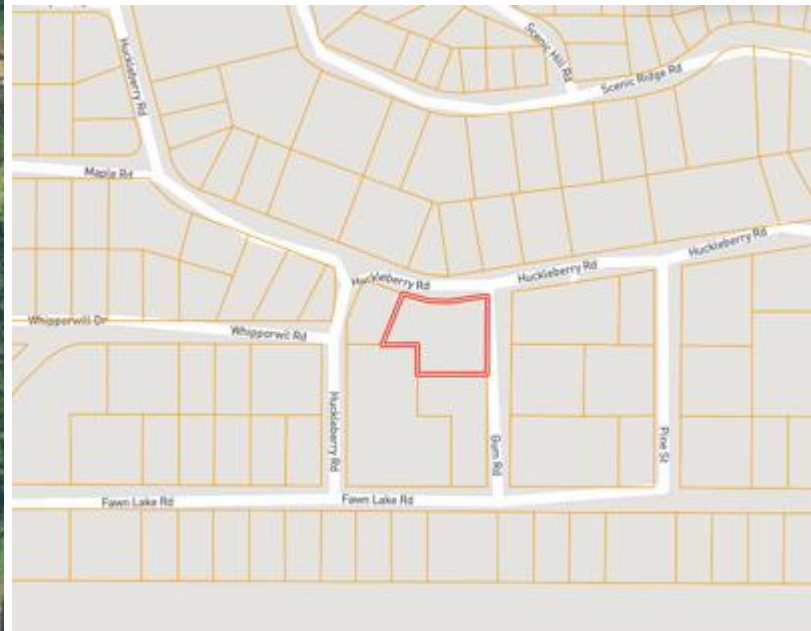
ANTHONY STEEN
REALTOR®
O: 601.898.2772 C: 662.645.5151
Anthony@TomSmithLand.com
TomSmithLandandHomes.com

Tom Smith
LAND AND
HOMES
Expect More. Get More.

LandReport
2011-2024
BEST
BROKERAGES

Information is believed to be accurate but not guaranteed.

MAPS / [Click for the Interactive Map](#)



Address: 85 Gum Rd, Coffeeville, MS 38922

Directions from I-55 in Grenada, MS:

Take exit 211 to merge onto Hwy 7 towards Coffeeville and travel 4.3 miles. Turn right onto MS-333 and travel 1.1 mile.

Turn left onto Wrights Rd. and travel 0.2 miles.

Take a slight right onto Huckleberry Rd. and travel 0.2 miles. Continue straight to stay on Huckleberry Rd. and travel 0.3 miles.

Keep right to stay on Huckleberry Rd. and travel 420 ft. Turn left onto Fawn Lake Rd. and travel 184 ft. Turn left onto Gum Rd. After 203 ft, the home will be on the left.

[Google Map Link](#)



**ANTHONY
STEEN**
REALTOR®

Office: 601.898.2772

Cell: 662.645.5151

Anthony@TomSmithLand.com



Expect More. Get More.

A Real Estate Expert You Can Trust

TomSmithLandandHomes.com

Information is believed to be accurate but not guaranteed.

