

# 91± Acre Hunting Tract in Leake County, MS



**\$159,250**

**This 91± acre hunting tract in Leake County, MS, just 5.2 miles east of Carthage, offers excellent deer and turkey hunting opportunities. The property features a 16x36 pole barn, standing 14 feet high, with a deck for a camper and a power pole installed for electricity. Lobutch Creek runs along the western boundary, providing great bass and catfish fishing and attracting ducks, making it a potential waterfowl hunting spot. The timber was cut last year, giving you a blank slate to design your road system and plan for a future timber investment for income. The property also includes three box blinds, available for purchase, and has a gated entrance with deeded easement access from Hwy 16. Give Kadero Edley a call to schedule your private viewing today!**



**KADERO  
EDLEY**

REALTOR®

Office: 601.898.2772

Cell: 601.488.7000

Kadero@TomSmithLand.com



Expect More. Get More.

**A Real Estate Expert You Can Trust**

TomSmithLandandHomes.com

Information is believed to be accurate but not guaranteed.







## A Real Estate Expert *You Can Trust!*

**KADERO EDLEY**  
REALTOR®

O: 601.898.2772 C: 601.488.7000

Kadero@TomSmithLand.com

TomSmithLandandHomes.com



Expect More. Get More.



Information is believed to be accurate but not guaranteed.





**A Real Estate Expert**  
*You Can Trust!*

**KADERO EDLEY**  
REALTOR®

O: 601.898.2772 C: 601.488.7000

Kadero@TomSmithLand.com

TomSmithLandandHomes.com



Expect More. Get More.



Information is believed to be accurate but not guaranteed.





## A Real Estate Expert You Can Trust!

**KADERO EDLEY**  
REALTOR®

O: 601.898.2772 C: 601.488.7000

Kadero@TomSmithLand.com

TomSmithLandandHomes.com



Expect More. Get More.



Information is believed to be accurate but not guaranteed.

# AERIAL MAP



[Click for the Interactive Map](#)

**A Real Estate Expert**  
*You Can Trust!*

**KADERO EDLEY**  
REALTOR®

O: 601.898.2772 C: 601.488.7000

Kadero@TomSmithLand.com

TomSmithLandandHomes.com



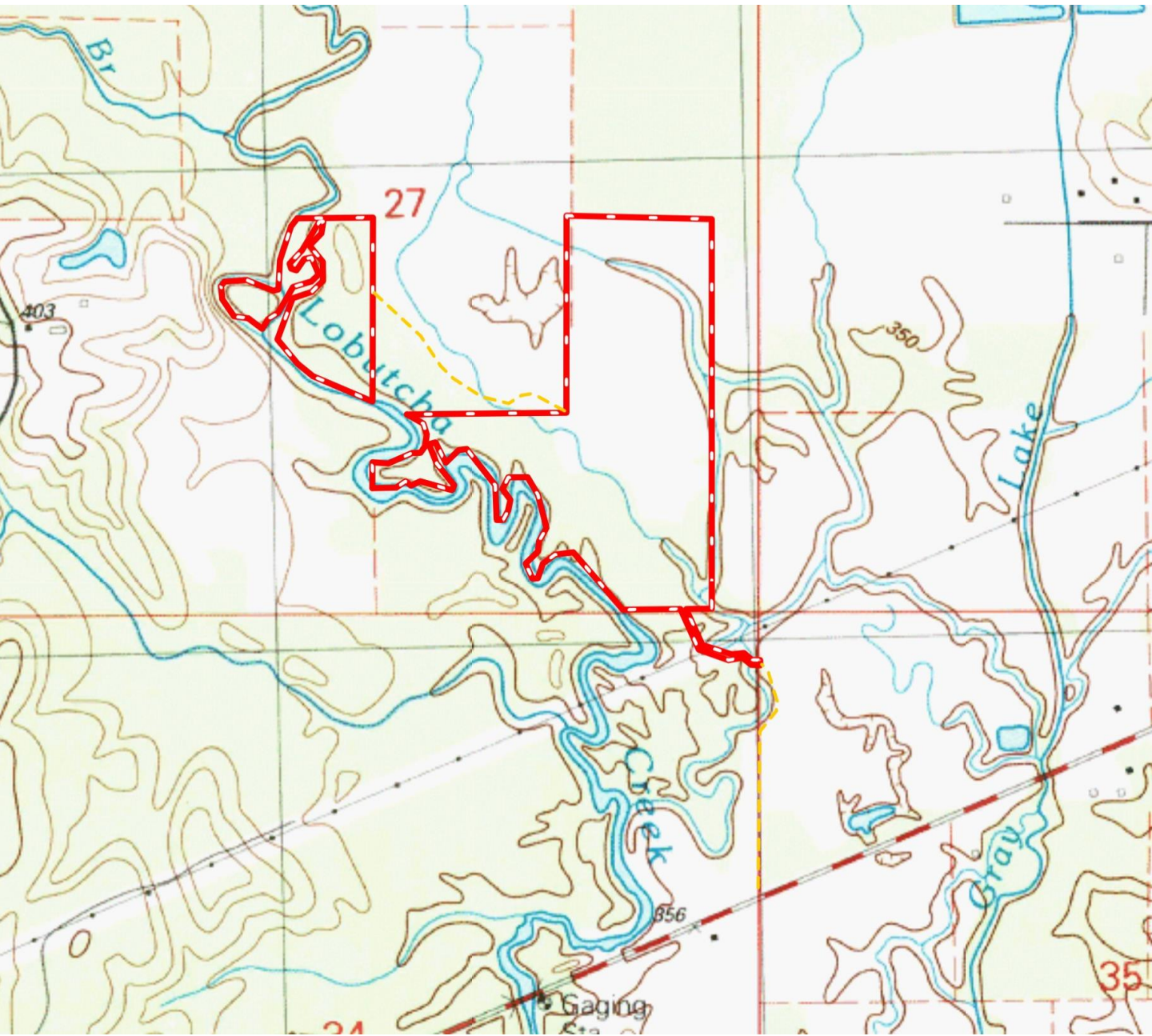
Expect More. Get More.



Information is believed to be accurate but not guaranteed.



# TOPOGRAPHY MAP



**A Real Estate Expert**  
*You Can Trust!*

**KADERO EDLEY**  
REALTOR®

O: 601.898.2772 C: 601.488.7000

Kadero@TomSmithLand.com

TomSmithLandandHomes.com

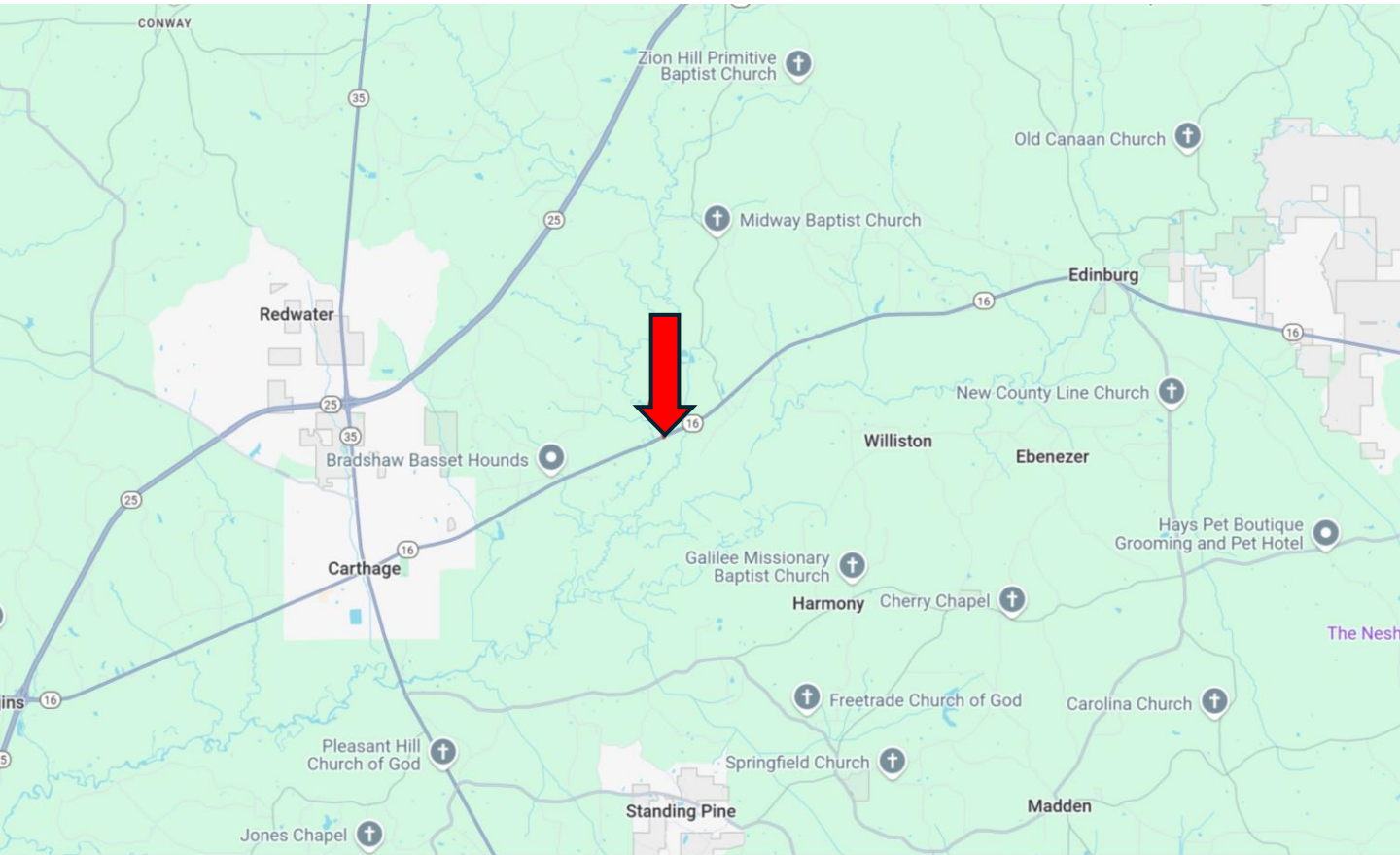


Expect More. Get More.

Information is believed to be accurate but not guaranteed.



# DIRECTIONAL MAP



**Directions from the intersection of Hwy 35 and Hwy 16 in Carthage, MS: Travel east on Hwy 16 E for 5.2 miles. The easement to the property will be on your left. [Google Maps Link](#)**



**KADERO  
EDLEY**

REALTOR®

Office: 601.898.2772

Cell: 601.488.7000

Kadero@TomSmithLand.com



Expect More. Get More.

**A Real Estate Expert You Can Trust**

TomSmithLandandHomes.com

Information is believed to be accurate but not guaranteed.

