

91± Acre Hunting Tract in Leake County, MS



\$172,900

This 91± acre hunting tract in Leake County, MS, just 5.2 miles east of Carthage, offers excellent deer and turkey hunting opportunities. The property features a 16x36 pole barn, standing 14 feet high, with a deck for a camper and a power pole installed for electricity. Lobutch Creek runs along the western boundary, providing great bass and catfish fishing and attracting ducks, making it a potential waterfowl hunting spot. The timber was cut last year, giving you a blank slate to design your road system and plan for a future timber investment for income. The property also includes three box blinds, available for purchase, and has a gated entrance with deeded easement access from Hwy 16. Give Kadero Edley a call to schedule your private viewing today!



**KADERO
EDLEY**

REALTOR®

Office: 601.898.2772

Cell: 601.488.7000

Kadero@TomSmithLand.com



Expect More. Get More.

A Real Estate Expert You Can Trust

TomSmithLandandHomes.com

Information is believed to be accurate but not guaranteed.





A Real Estate Expert *You Can Trust!*

KADERO EDLEY
REALTOR®

O: 601.898.2772 C: 601.488.7000

Kadero@TomSmithLand.com

TomSmithLandandHomes.com



Expect More. Get More.





A Real Estate Expert *You Can Trust!*

KADERO EDLEY
REALTOR®

O: 601.898.2772 C: 601.488.7000

Kadero@TomSmithLand.com

TomSmithLandandHomes.com



Expect More. Get More.





A Real Estate Expert *You Can Trust!*

KADERO EDLEY
REALTOR®

O: 601.898.2772 C: 601.488.7000

Kadero@TomSmithLand.com

TomSmithLandandHomes.com



Expect More. Get More.



AERIAL MAP



land **id.** [Click for the Interactive Map](#)

A Real Estate Expert
You Can Trust!

KADERO EDLEY
REALTOR®

O: 601.898.2772 C: 601.488.7000

Kadero@TomSmithLand.com

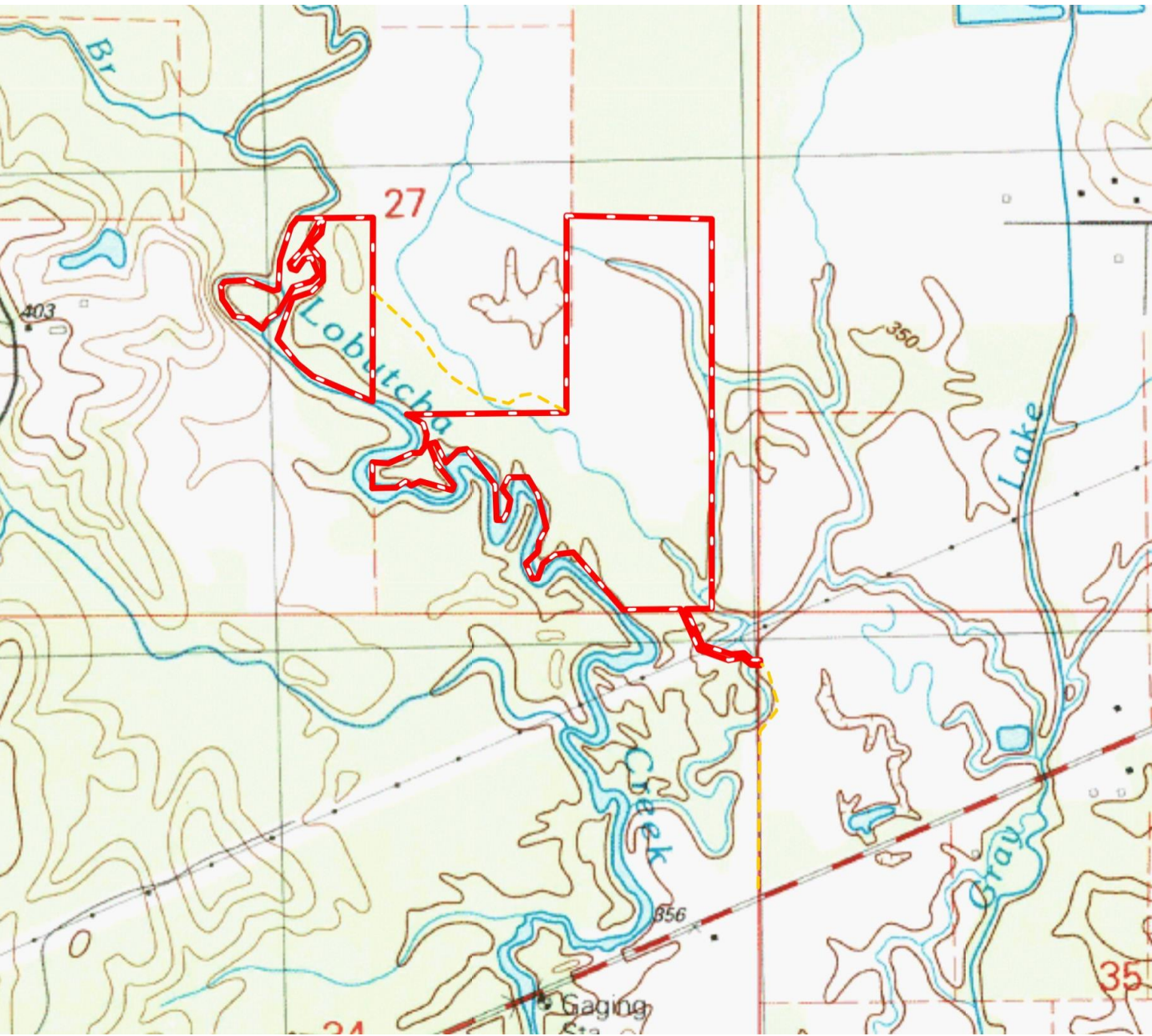
TomSmithLandandHomes.com



Expect More. Get More.



TOPOGRAPHY MAP



A Real Estate Expert
You Can Trust!

KADERO EDLEY
REALTOR®

O: 601.898.2772 C: 601.488.7000

Kadero@TomSmithLand.com

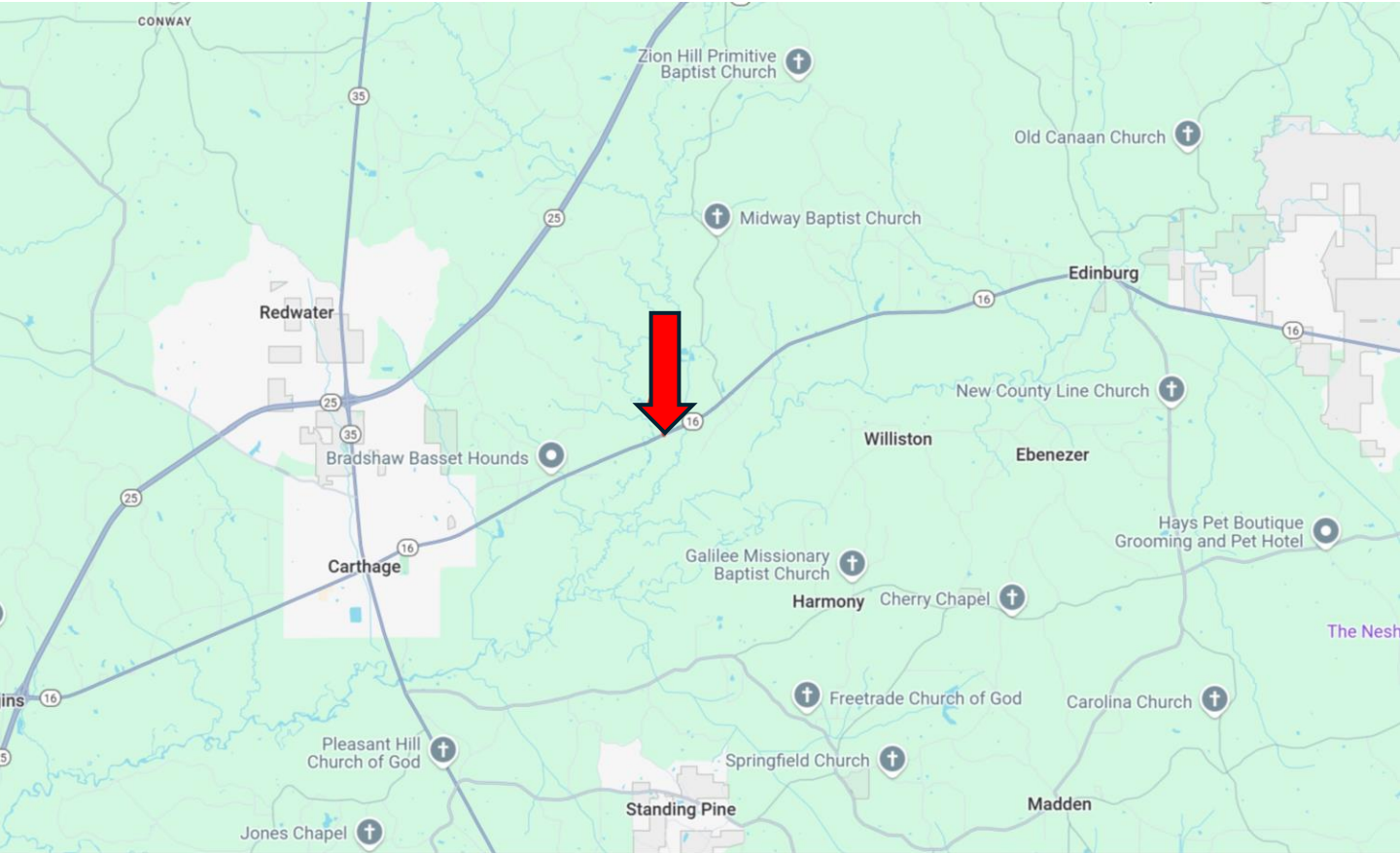
TomSmithLandandHomes.com



Expect More. Get More.



DIRECTIONAL MAP



Directions from the intersection of Hwy 35 and Hwy 16 in Carthage, MS: Travel east on Hwy 16 E for 5.2 miles. The easement to the property will be on your left. [Google Maps Link](#)



**KADERO
EDLEY**

REALTOR®

Office: 601.898.2772

Cell: 601.488.7000

Kadero@TomSmithLand.com



Expect More. Get More.

A Real Estate Expert You Can Trust

TomSmithLandandHomes.com

Information is believed to be accurate but not guaranteed.

