

SECLUDED RETREAT WITH A CHARMING CABIN on 19.5± Acres in Yalobusha County, MS



\$210,000

Located on 19.5± acres in Yalobusha County, MS, this charming 864 sq. ft. 1-bed, 1-bath cabin offers the perfect retreat for nature lovers, outdoor enthusiasts, and those seeking a peaceful escape. Ideally situated between three stunning lakes—Grenada, Enid, and Sardis—this property is a dream for outdoorsmen. The welcoming 54x12 front porch and outdoor patio provide the perfect spots to relax and take in the serene surroundings, while There's also a carport to keep you and your vehicles dry from the elements. Just east lies the Holly Springs National Forest, providing hunting opportunities. The land includes a fenced pasture, a small pond, and a 30x42 barn with four stalls and a tack room, making it ideal for livestock or equestrian use. This property is conveniently located 20 miles north of Grenada, 28 miles south of Batesville, and 44 miles southwest of Oxford, and offers seclusion and accessibility. With city water from Tillatoba and power through Tallahatchie Valley, it's ready for you to move in and enjoy the best of country living. Give Kadero Edley a call to schedule your private viewing today!



**KADERO
EDLEY**

REALTOR®

Office: 601.898.2772

Cell: 601.488.7000

Kadero@TomSmithLand.com



Expect More. Get More.

A Real Estate Expert You Can Trust

TomSmithLandandHomes.com

Information is believed to be accurate but not guaranteed.





A Real Estate Expert You Can Trust!

KADERO EDLEY
REALTOR®

O: 601.898.2772 C: 601.488.7000

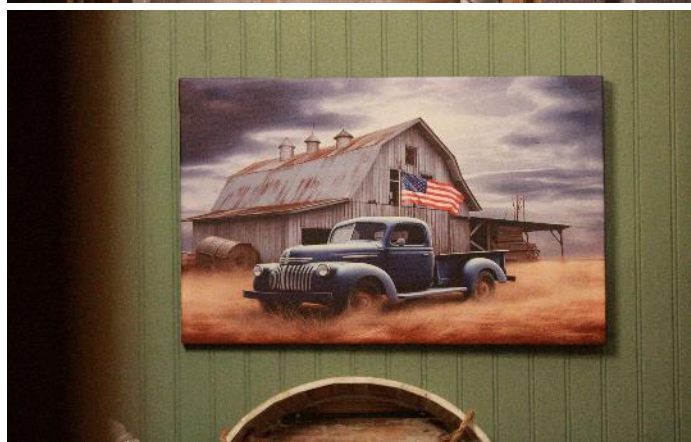
Kadero@TomSmithLand.com

TomSmithLandandHomes.com



Expect More. Get More.





A Real Estate Expert
You Can Trust!

KADERO EDLEY
REALTOR®

O: 601.898.2772 C: 601.488.7000

Kadero@TomSmithLand.com

TomSmithLandandHomes.com

**Tom
Smith
LAND AND
HOMES**

Expect More. Get More.

2011-2024
BEST
BROKER/AGTS

Information is believed to be accurate but not guaranteed.



A Real Estate Expert *You Can Trust!*

KADERO EDLEY
REALTOR®

O: 601.898.2772 C: 601.488.7000

Kadero@TomSmithLand.com

TomSmithLandandHomes.com



Expect More. Get More.



Information is believed to be accurate but not guaranteed.

AERIAL MAP



Click for Interactive Map

A Real Estate Expert
You Can Trust!

KADERO EDLEY
REALTOR®

O: 601.898.2772 C: 601.488.7000

Kadero@TomSmithLand.com

TomSmithLandandHomes.com

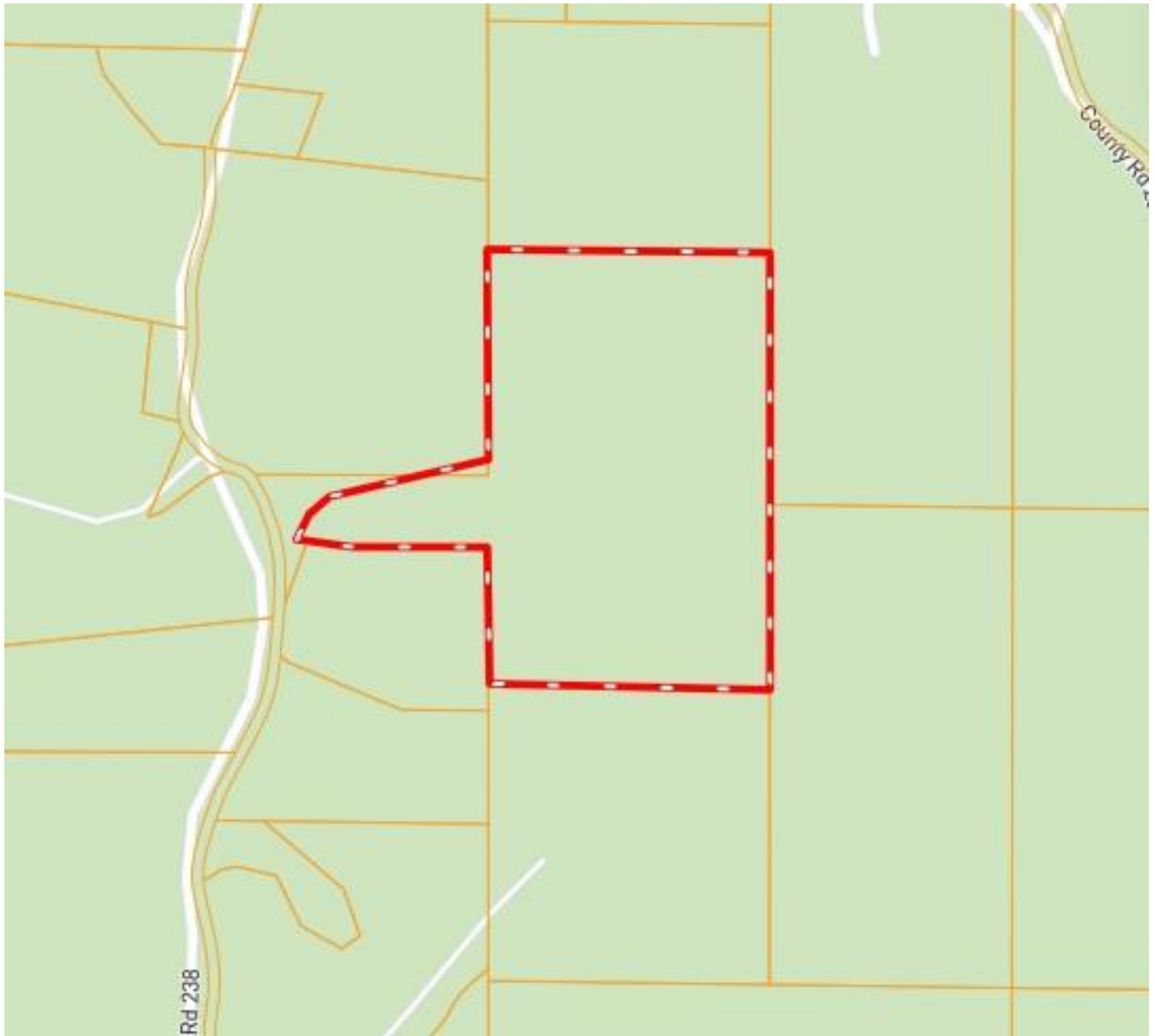


Expect More. Get More.



Information is believed to be accurate but not guaranteed.

OWNERSHIP MAP



A Real Estate Expert
You Can Trust!

KADERO EDLEY
REALTOR®

O: 601.898.2772 C: 601.488.7000

Kadero@TomSmithLand.com

TomSmithLandandHomes.com

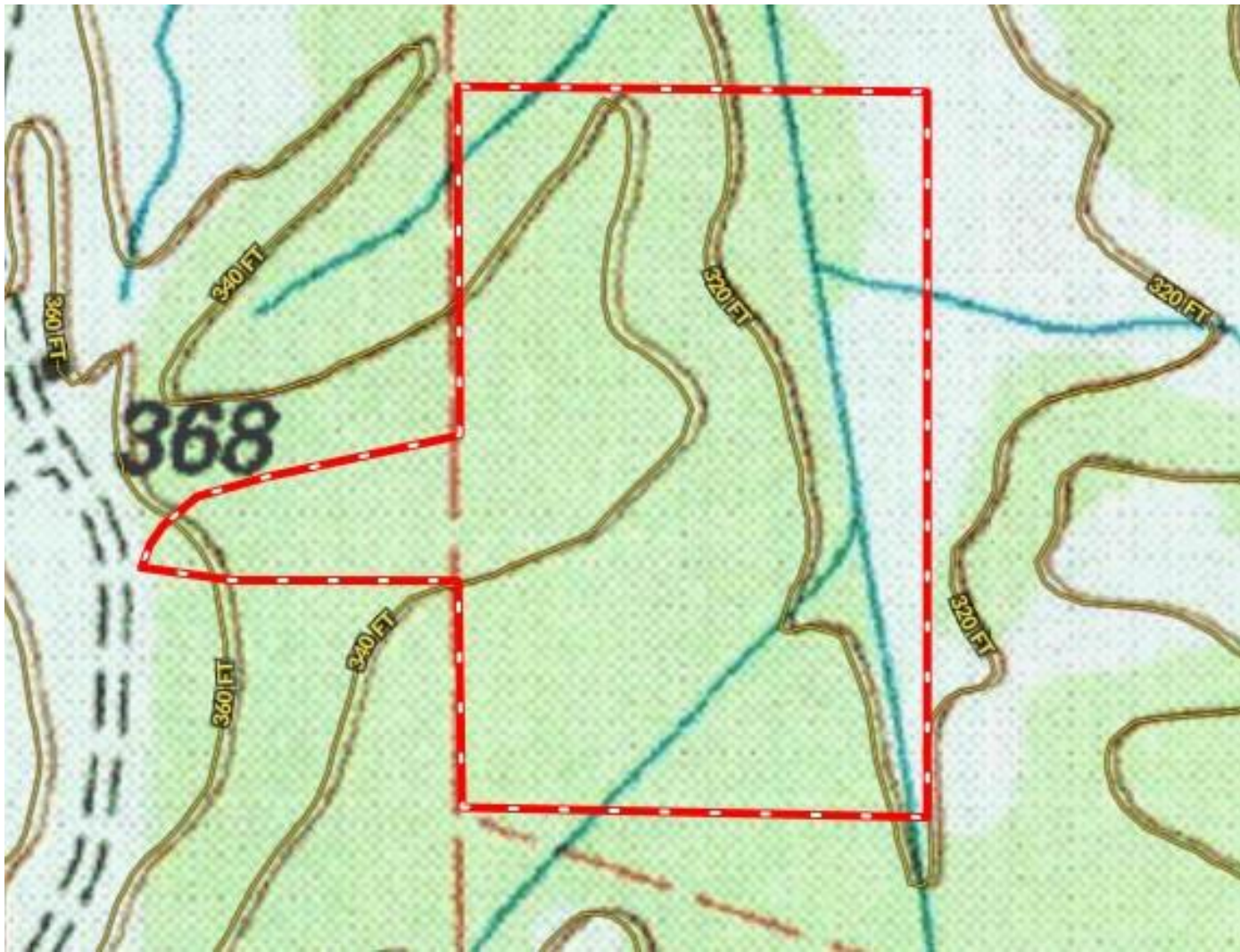


Expect More. Get More.



Information is believed to be accurate but not guaranteed.

TOPOGRAPHY MAP



A Real Estate Expert
You Can Trust!

KADERO EDLEY
REALTOR®

O: 601.898.2772 C: 601.488.7000

Kadero@TomSmithLand.com

TomSmithLandandHomes.com

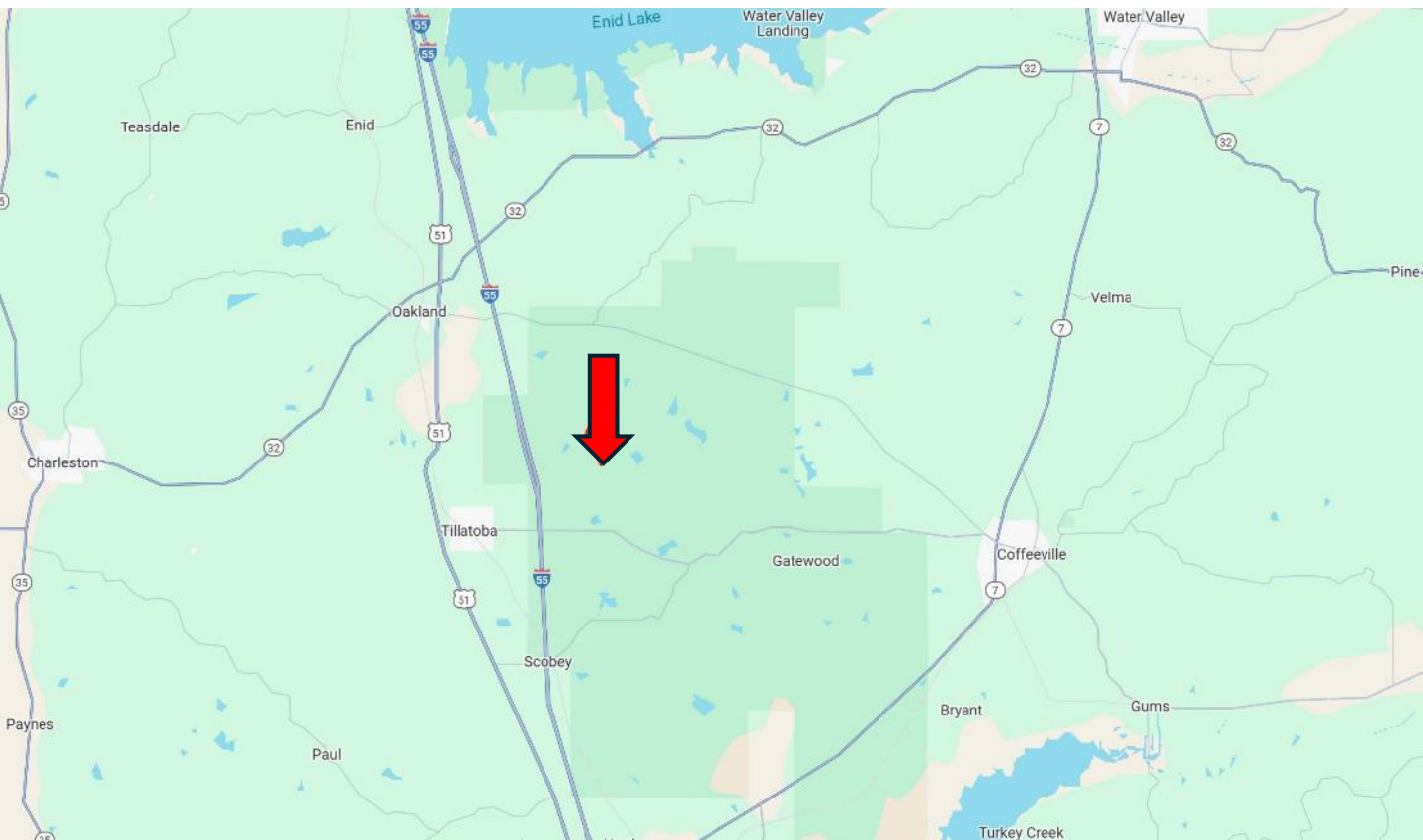


Expect More. Get More.



Information is believed to be accurate but not guaranteed.

DIRECTIONAL MAP



Directions from I-55 in Grenada, MS: Take exit 220 for Hwy 330/Tillatoba Road. Turn onto Hwy 330/Tillatoba Road and travel 0.2 miles. Turn left onto CR 154 and travel 1.7 miles. Turn left onto CR 238. After 0.9 miles, the property will be on your left.

[Google Maps Link](#)



**KADERO
EDLEY**

REALTOR®

Office: 601.898.2772

Cell: 601.488.7000

Kadero@TomSmithLand.com



Expect More. Get More.

A Real Estate Expert You Can Trust

TomSmithLandandHomes.com

Information is believed to be accurate but not guaranteed.

