

RECREATIONAL HUNTING HAVEN

172± Acres in Chickasaw County, MS



\$197,800

This 172± acre tract in Chickasaw County, MS, offers abundant deer and wildlife, making it an excellent hunting and recreational property. With 4,300± feet of gravel road frontage, creating your access is easy, and there are potential possibilities for development. Whether you want to establish food plots, trails, or a hunting camp, this land has tons of raw potential. Also, a creek bottom runs through the heart property, adding to the natural beauty and providing a great water source for wildlife. If you're looking for a versatile piece of land with excellent hunting, privacy, and room to make it your own, this is it. Don't miss this rare opportunity—contact Leland or Michael today for more details or to schedule a showing!



LELAND SELBY
REALTOR®

O: 662.268.6333 | C: 662.394.9876
Leland@TomSmithLand.com



MICHAEL HALFACRE
MANAGING BROKER

O: 662.268.6333 | C: 662.242.4220
MHalfacre@TomSmithLand.com

TomSmithLandandHomes.com

Information is believed to be accurate but not guaranteed.





LELAND SELBY
REALTOR®

O: 662.268.6333 | C: 662.394.9876
Leland@TomSmithLand.com



MICHAEL HALFACRE
MANAGING BROKER

O: 662.268.6333 | C: 662.242.4220
MHalfacre@TomSmithLand.com

TomSmithLandandHomes.com

Information is believed to be accurate but not guaranteed.



Aerial Map



[Click Here for the LandId Interactive Map Link](#)

LELAND SELBY
REALTOR®

O: 662.268.6333 | C: 662.394.9876
Leland@TomSmithLand.com



MICHAEL HALFACRE
MANAGING BROKER

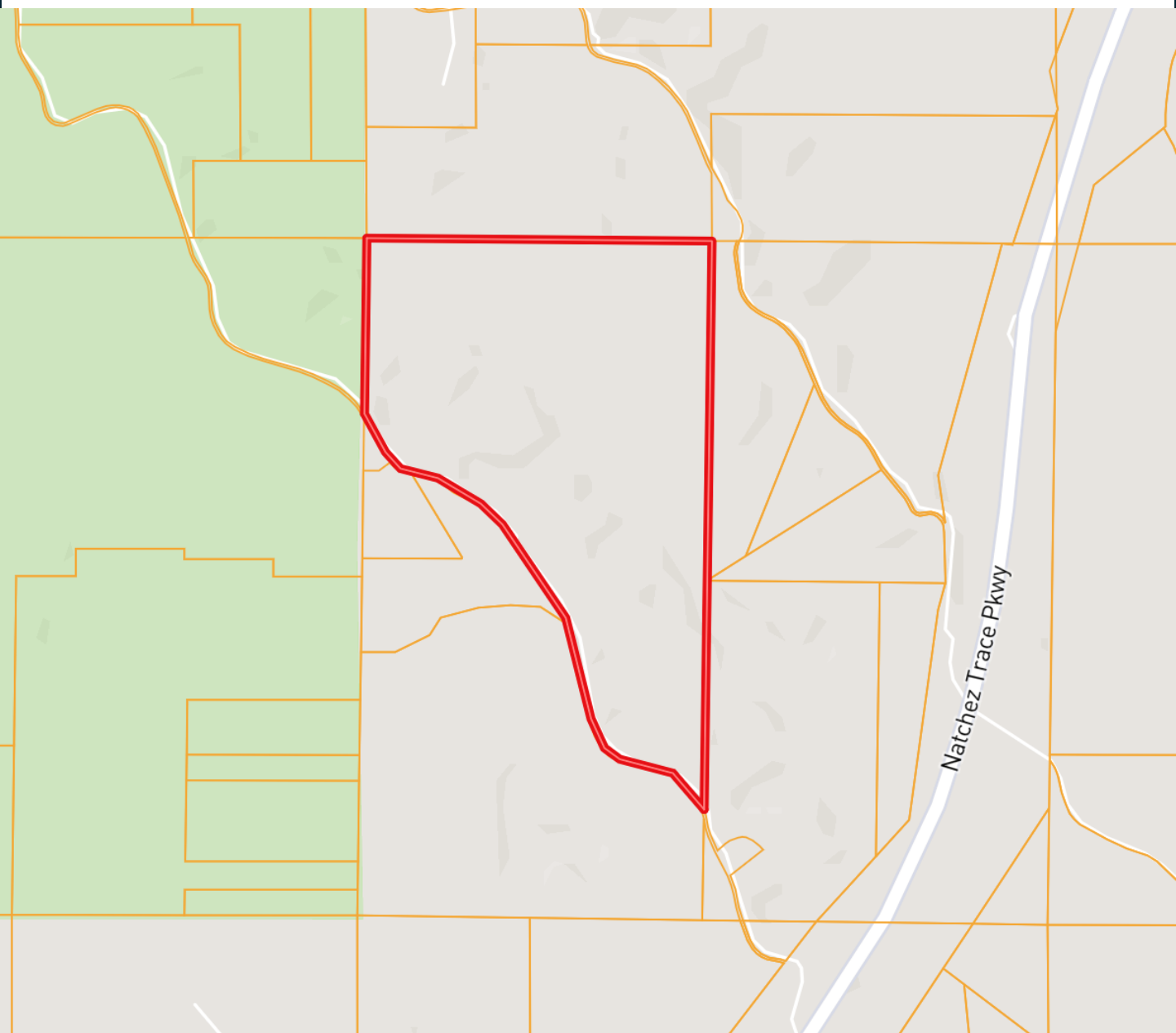
O: 662.268.6333 | C: 662.242.4220
MHalfacre@TomSmithLand.com

TomSmithLandandHomes.com

Information is believed to be accurate but not guaranteed.



Ownership Map



LELAND SELBY
REALTOR®

O: 662.268.6333 | C: 662.394.9876
Leland@TomSmithLand.com



MICHAEL HALFACRE
MANAGING BROKER

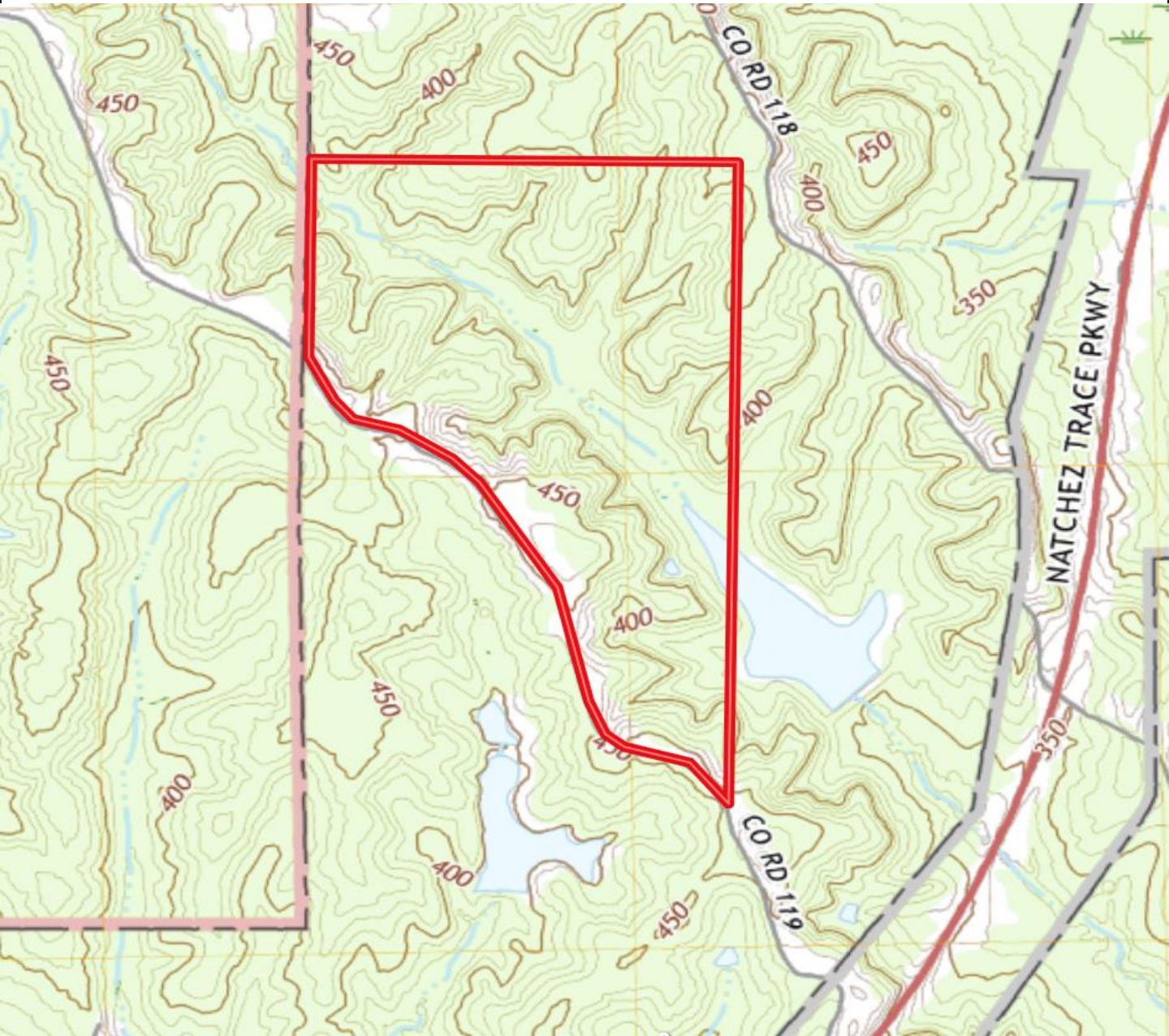
O: 662.268.6333 | C: 662.242.4220
MHalfacre@TomSmithLand.com

TomSmithLandandHomes.com

Information is believed to be accurate but not guaranteed.



Topographic Map



LELAND SELBY
REALTOR®

O: 662.268.6333 | C: 662.394.9876
Leland@TomSmithLand.com



MICHAEL HALFACRE
MANAGING BROKER

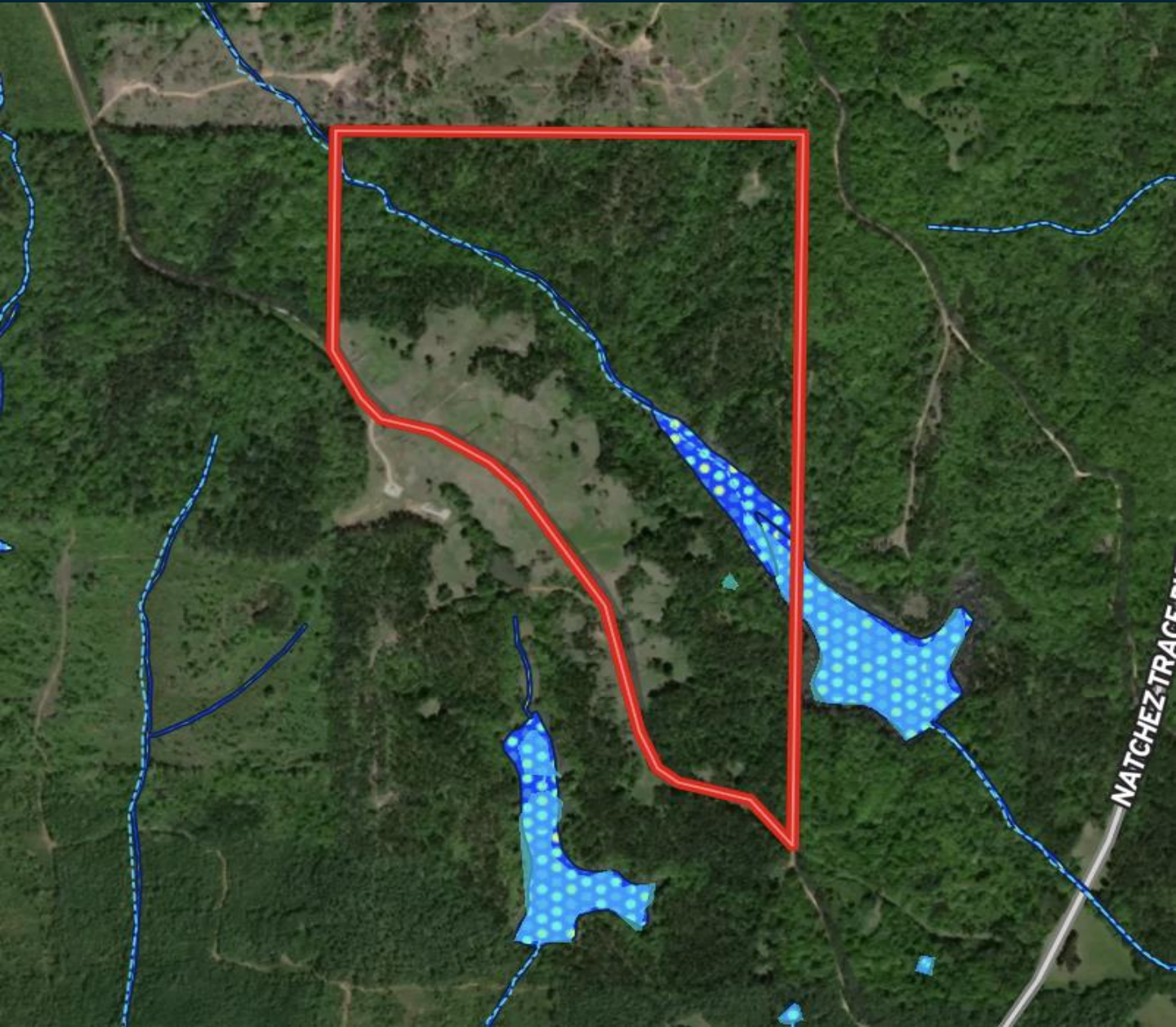
O: 662.268.6333 | C: 662.242.4220
MHalfacre@TomSmithLand.com

TomSmithLandandHomes.com

Information is believed to be accurate but not guaranteed.



FEMA/Wetlands Map



LELAND SELBY
REALTOR®

O: 662.268.6333 | C: 662.394.9876
Leland@TomSmithLand.com



MICHAEL HALFACRE
MANAGING BROKER

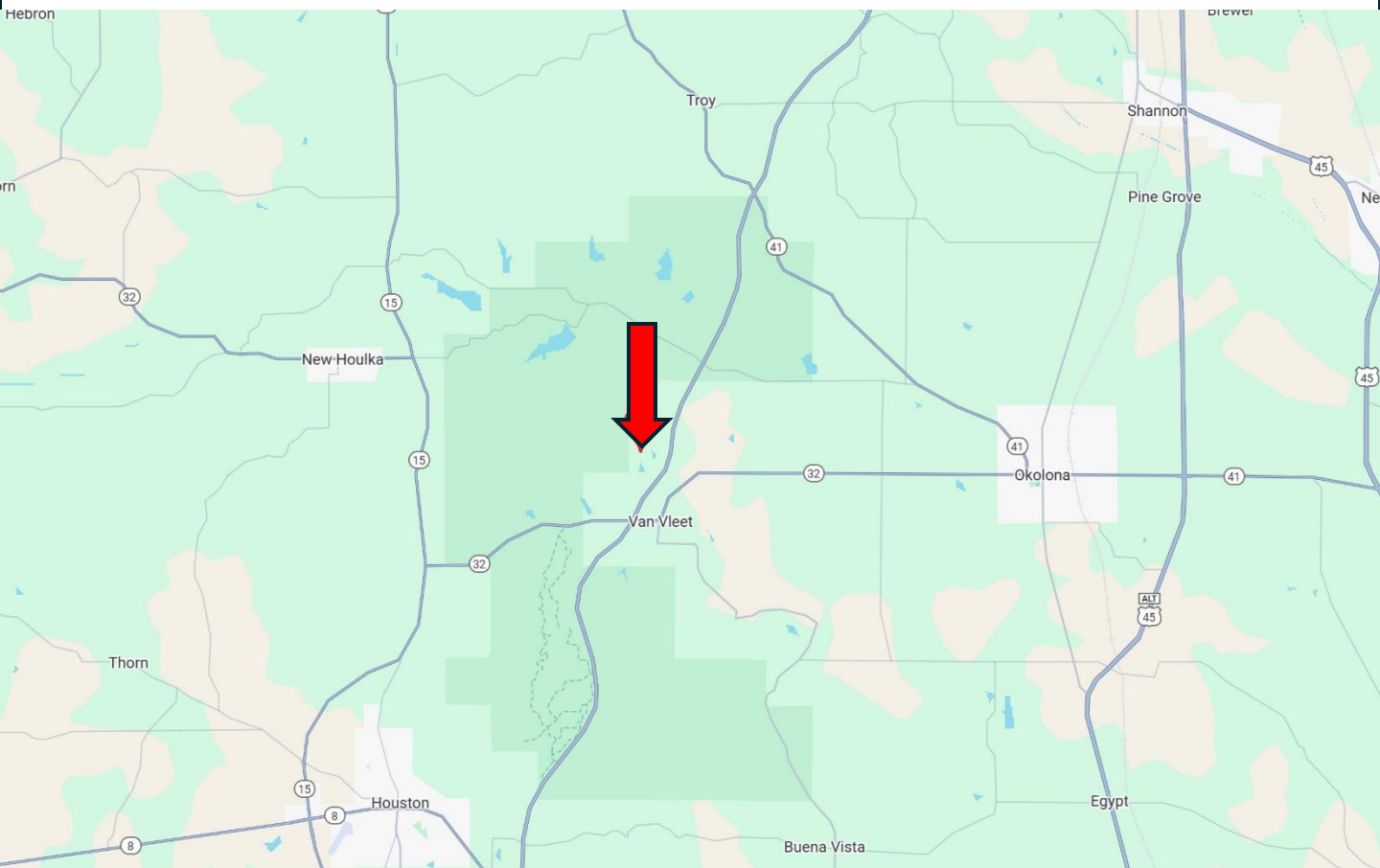
O: 662.268.6333 | C: 662.242.4220
MHalfacre@TomSmithLand.com

TomSmithLandandHomes.com

Information is believed to be accurate but not guaranteed.



Directional Map



Directions from the intersection of Hwy 8 and Hwy 15 in Houston, MS: Merge onto Hwy 15N/Houston Bypass and travel 6.7 miles. Turn right onto Hwy 32 E and travel 4.7 miles. Turn right onto the ramp for the Natchez Trace Parkway. Turn left onto the Natchez Trace Parkway and travel 1.1 miles. Turn left onto County Rd 119. After 0.8 miles, the property will be on the right.

[GOOGLE MAP LINK](#)



LELAND SELBY
REALTOR®

O: 662.268.6333 | C: 662.394.9876
Leland@TomSmithLand.com



Expect More. Get More.



MICHAEL HALFACRE
MANAGING BROKER

O: 662.268.6333 | C: 662.242.4220
MHalfacre@TomSmithLand.com

TomSmithLandandHomes.com

Information is believed to be accurate but not guaranteed.

