

PRIME HOMESTEAD OR INVESTMENT PROPERTY

8.11± Acres in Smith County, MS



\$60,825

This 8.11± acre property in Smith County offers a peaceful country setting along County Road 99, just one mile south of Sylavarena, and conveniently located an hour from three major Mississippi cities: Jackson, Meridian, and Hattiesburg. Recently thinned, the land now provides a clearer view of potential homesites along the natural ridge, making it easier to envision your dream home. With approximately 1,130 feet of road frontage, there's plenty of space for a private retreat, a workshop, or a future investment opportunity. Whether you are looking for a quiet escape or a place to put down roots, this property holds incredible potential. Don't miss out on this rare opportunity! Call Dale or David to schedule your tour today!



DALE WILDS
REALTOR®

O: 601.898.2772 | C: 662.715.7109
Dale@TomSmithLand.com



DAVID BELDEN
ALC®, REALTOR®

O: 601.898.2772 | C: 601.415.3884
DBelden@TomSmithLand.com

TomSmithLandandHomes.com

Information is believed to be accurate but not guaranteed.





DALE WILDS
REALTOR®

O: 601.898.2772 | C: 662.715.7109
Dale@TomSmithLand.com



DAVID BELDEN
ALC®, REALTOR®

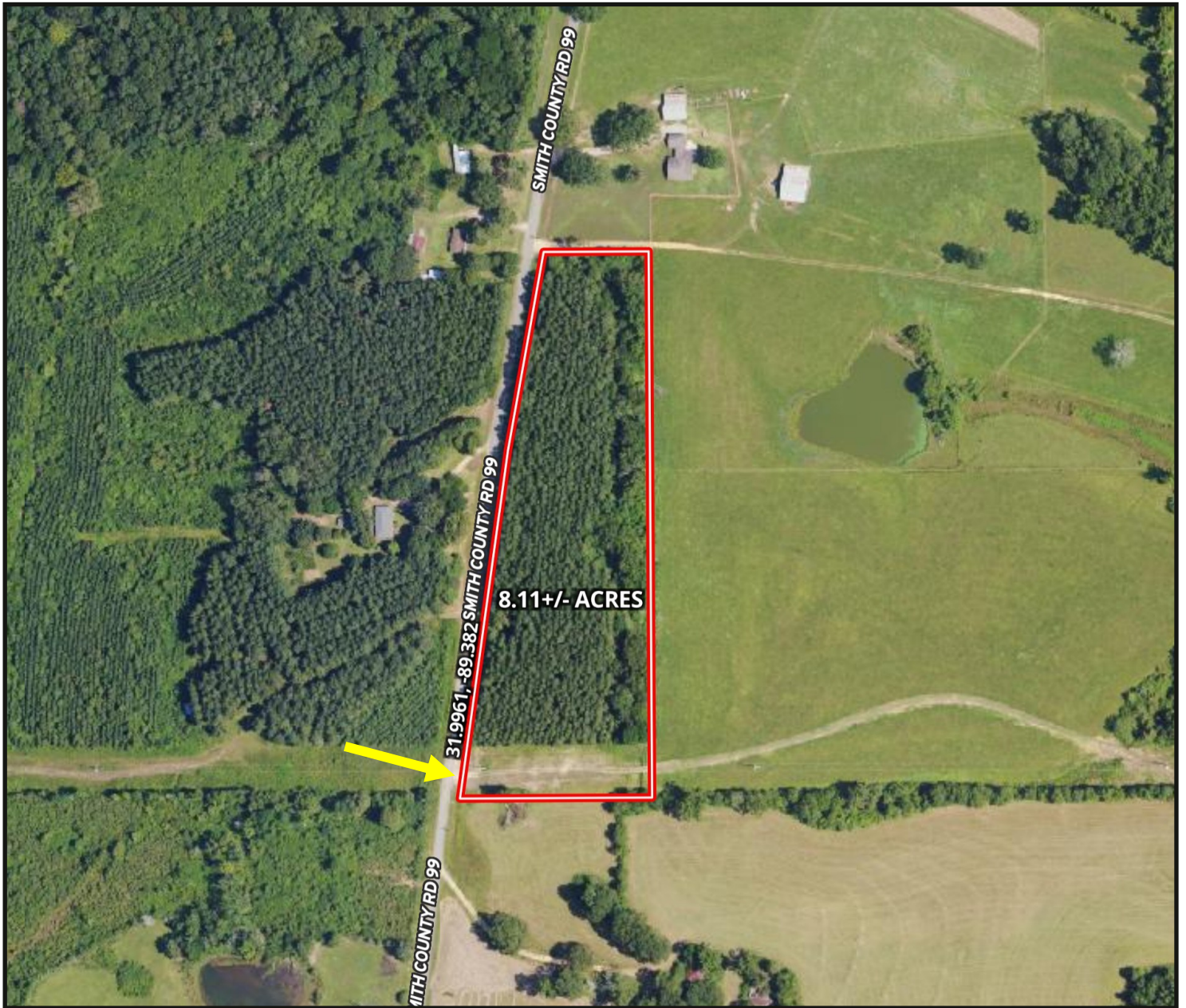
O: 601.898.2772 | C: 601.415.3884
DBelden@TomSmithLand.com

TomSmithLandandHomes.com

Information is believed to be accurate but not guaranteed.



AERIAL MAP



land **id.** [CLICK HERE FOR THE LANDID INTERACTIVE MAP](#)

DALE WILDS
REALTOR®

O: 601.898.2772 | C: 662.715.7109
Dale@TomSmithLand.com



DAVID BELDEN
ALC®, REALTOR®

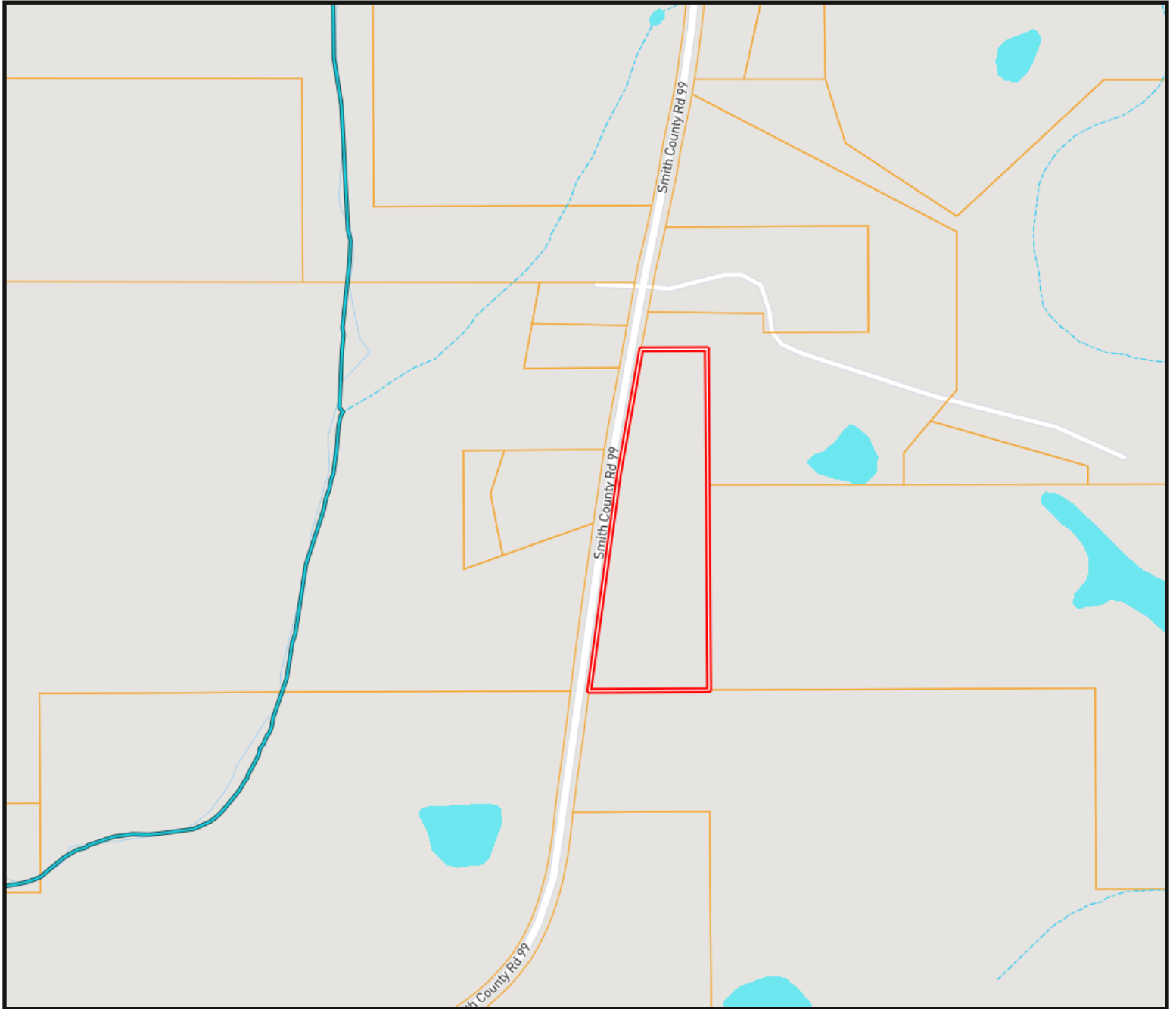
O: 601.898.2772 | C: 601.415.3884
DBelden@TomSmithLand.com

TomSmithLandandHomes.com

Information is believed to be accurate but not guaranteed.



OWNERSHIP MAP



DALE WILDS
REALTOR®

O: 601.898.2772 | C: 662.715.7109
Dale@TomSmithLand.com



DAVID BELDEN
ALC®, REALTOR®

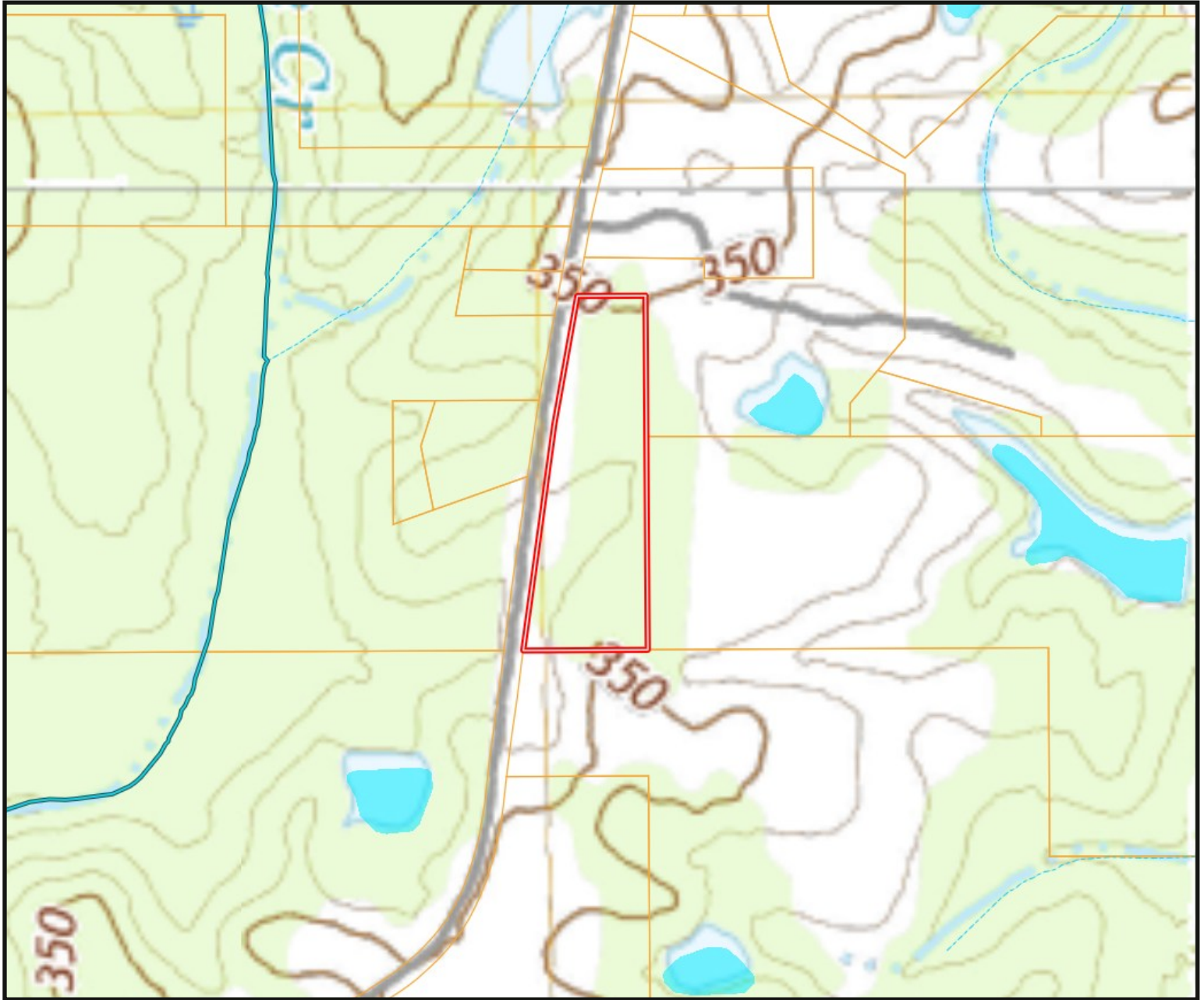
O: 601.898.2772 | C: 601.415.3884
DBelden@TomSmithLand.com

TomSmithLandandHomes.com

Information is believed to be accurate but not guaranteed.



TOPO MAP



DALE WILDS
REALTOR®

O: 601.898.2772 | C: 662.715.7109
Dale@TomSmithLand.com



DAVID BELDEN
ALC®, REALTOR®

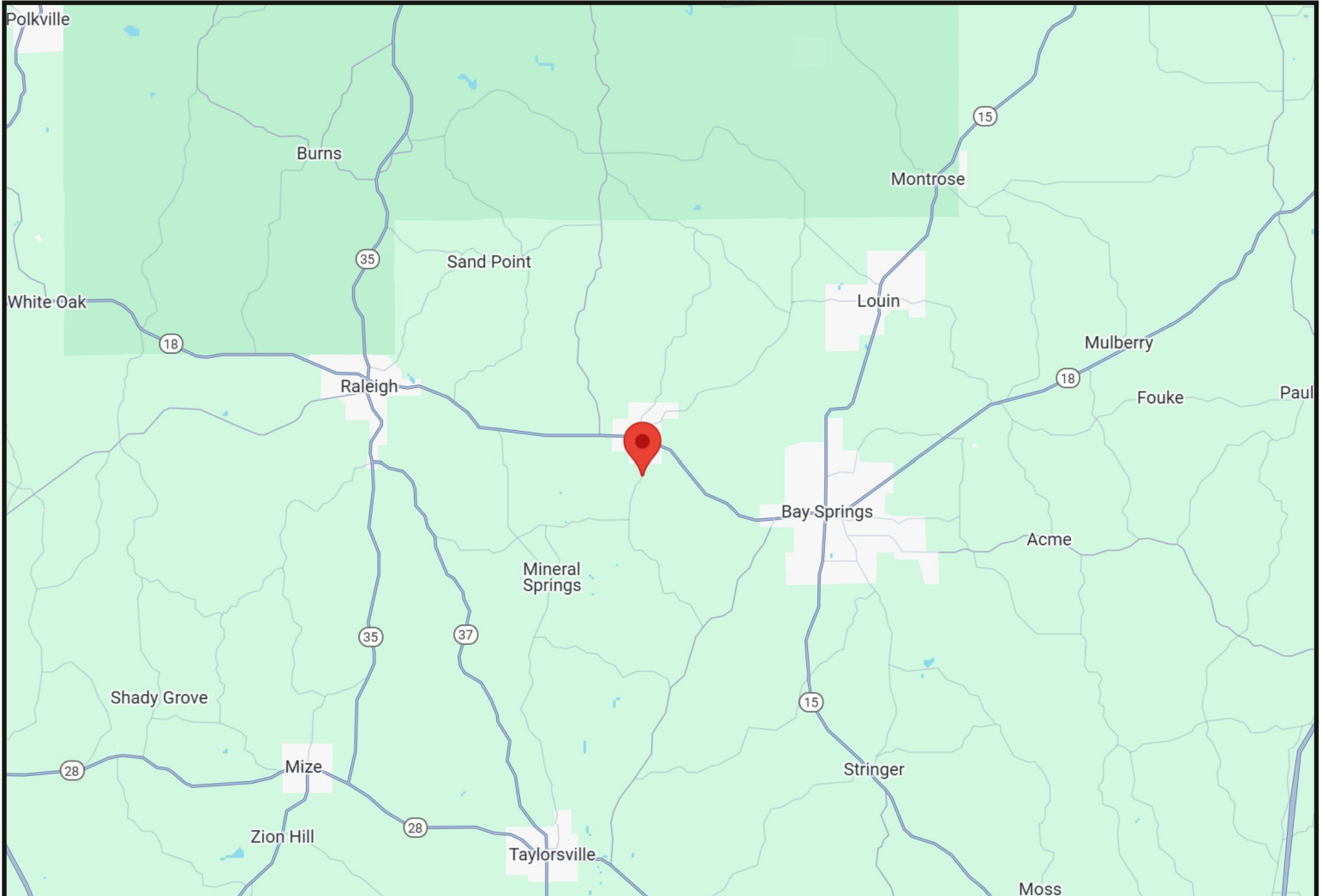
O: 601.898.2772 | C: 601.415.3884
DBelden@TomSmithLand.com

TomSmithLandandHomes.com

Information is believed to be accurate but not guaranteed.



DIRECTIONAL MAP



Directions from the Intersection of Hwy 18 and Hwy 35 in Raleigh, MS: Travel east on Hwy 18 for 8.8 miles. Turn right onto Smith County Road 99. After 0.9 miles, the property will be on the left.

[GOOGLE MAP LINK](#)



DALE WILDS
REALTOR®

O: 601.898.2772 | C: 662.715.7109
Dale@TomSmithLand.com



DAVID BELDEN
ALC®, REALTOR®

O: 601.898.2772 | C: 601.415.3884
DBelden@TomSmithLand.com

TomSmithLandandHomes.com

Information is believed to be accurate but not guaranteed.

