

28.8 ± ACRE HOMESITE JONES COUNTY, MS



\$280,000

This 28.8+/- acre property in Jones County, MS, is hard to find. This property is just outside Laurel, MS, and sits in the Jones County School District! This property features over 750 feet of road frontage on Lower Myrick Road, with power and water available. This property features multiple great homesites for someone looking to build their dream home. This tract consists of gently rolling hills and is completely fenced and cross-fenced. There is also a small stocked pond in the back of the property. If you are looking for a small recreational tract or somewhere to build and have some room to run, this 28.8+/- acres is what you are looking for! To schedule a private showing, call or text Walker today!



**WALKER
TRANUM**
REALTOR®

Office: 662.268.6333
Cell: 662.769.1442
Walker@TomSmithHomes.com



Expect More. Get More.

A Real Estate Expert You Can Trust

TomSmithLandandHomes.com

Information is believed to be accurate but not guaranteed.





A Real Estate Expert *You Can Trust!*

WALKER TRANUM

REALTOR®

O: 662.268.6333 C: 662.769.1442

Walker@TomSmithHomes.com

TomSmithLandandHomes.com



Expect More. Get More.



Aerial Map



Click [Here](#) for the Interactive Map Link

A Real Estate Expert
You Can Trust!

WALKER TRANUM

REALTOR®

O: 662.268.6333 C: 662.769.1442

Walker@TomSmithHomes.com

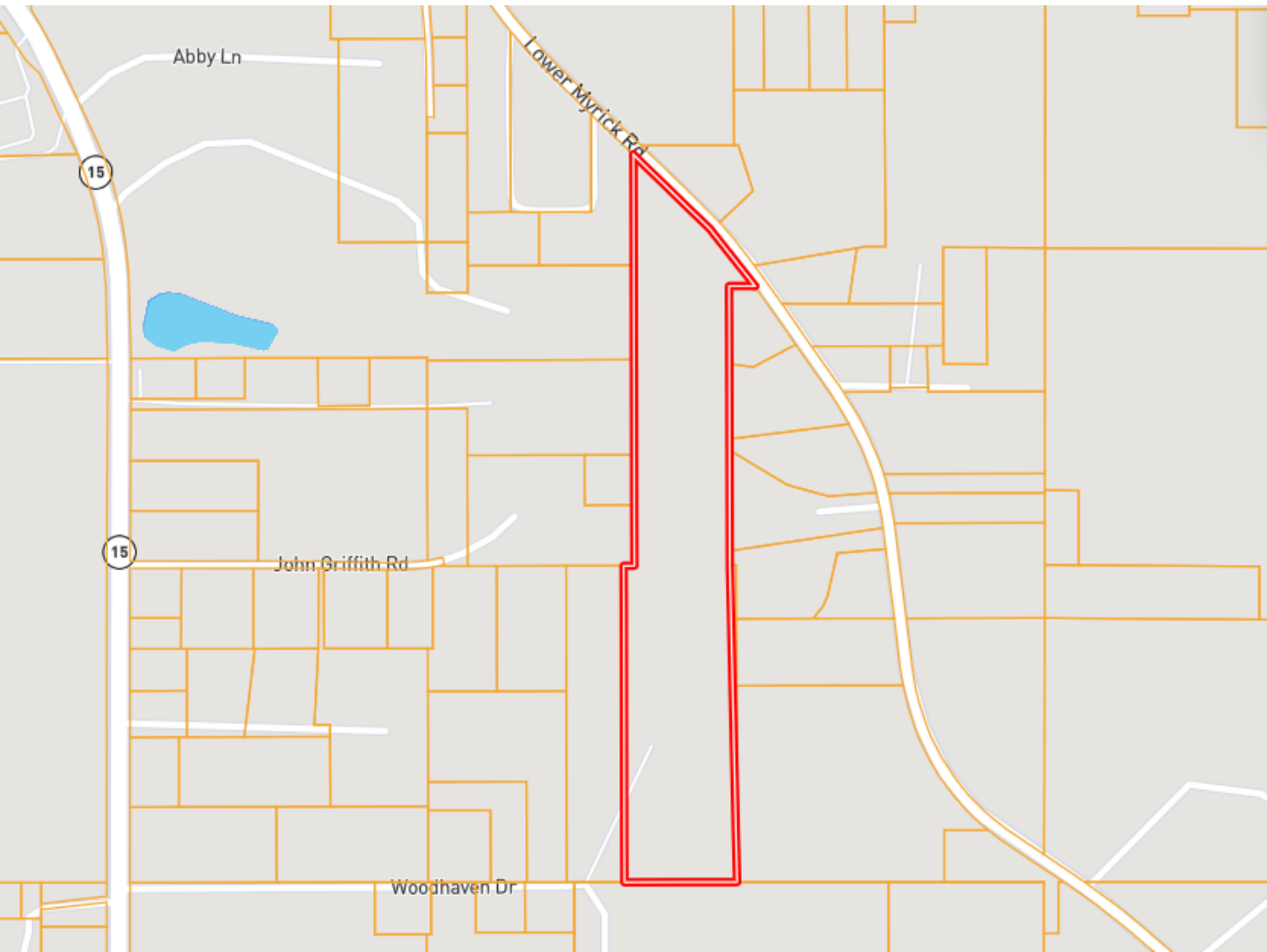
TomSmithLandandHomes.com



Expect More. Get More.



Ownership Map



A Real Estate Expert
You Can Trust!

WALKER TRANUM

REALTOR®

O: 662.268.6333 C: 662.769.1442

Walker@TomSmithHomes.com

TomSmithLandandHomes.com

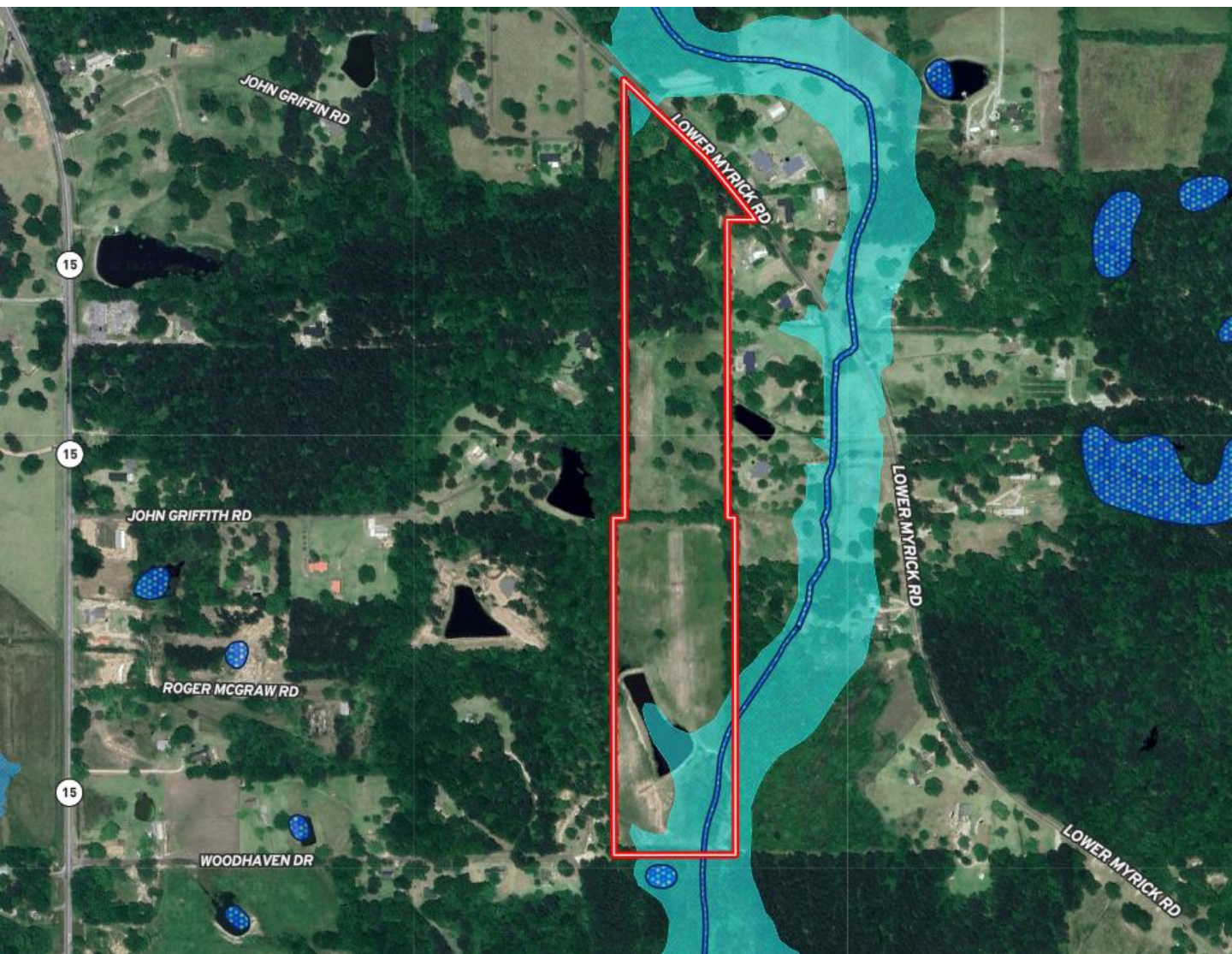


Expect More. Get More.



Information is believed to be accurate but not guaranteed.

Flood Map



**WALKER
TRANUM**
REALTOR®

Office: 662.268.6333
Cell: 662.769.1442
Walker@TomSmithHomes.com



Expect More. Get More.

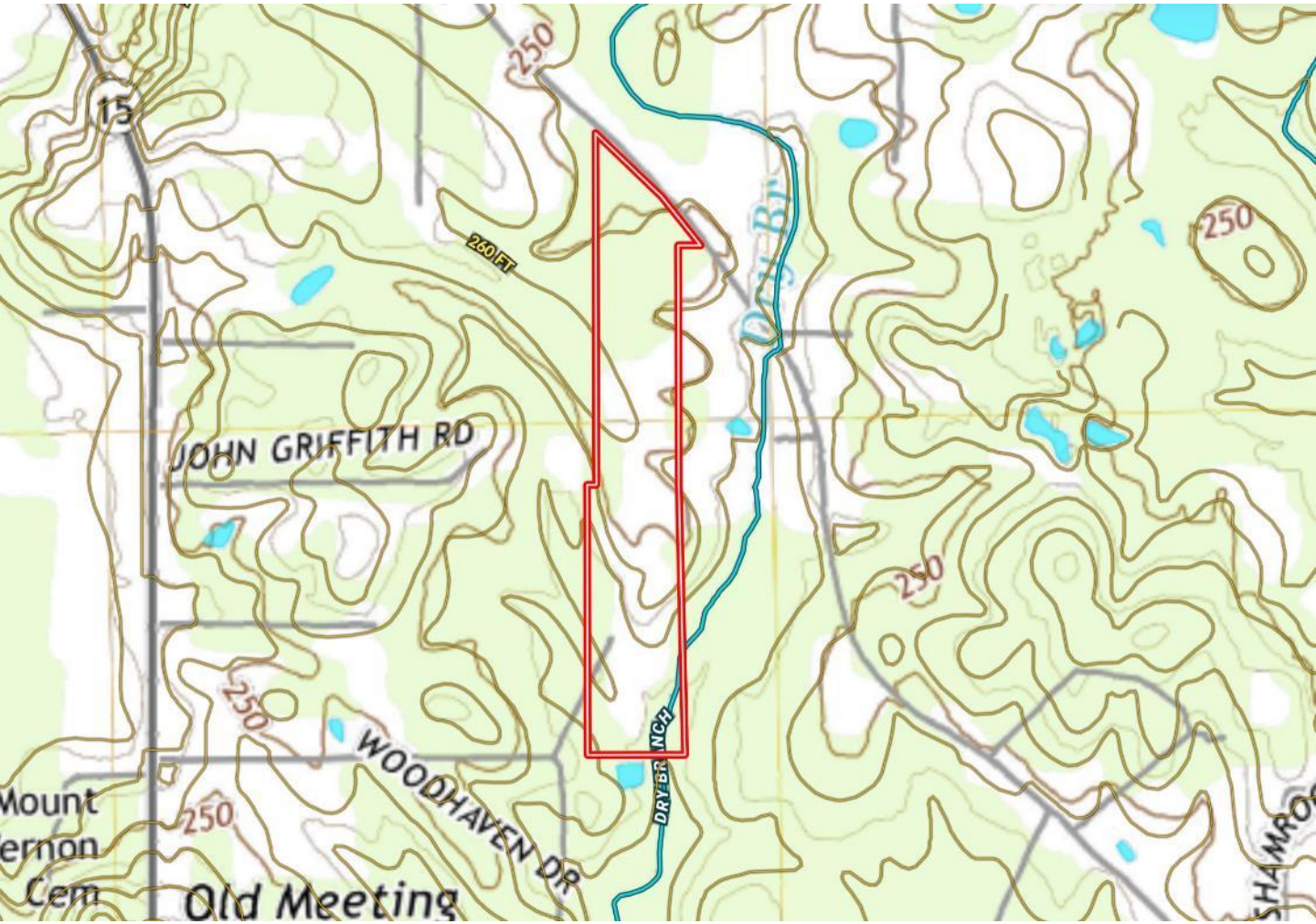
A Real Estate Expert You Can Trust

TomSmithLandandHomes.com

Information is believed to be accurate but not guaranteed.



Topo Map



**WALKER
TRANUM**
REALTOR®

Office: 662.268.6333

Cell: 662.769.1442

Walker@TomSmithHomes.com



Expect More. Get More.

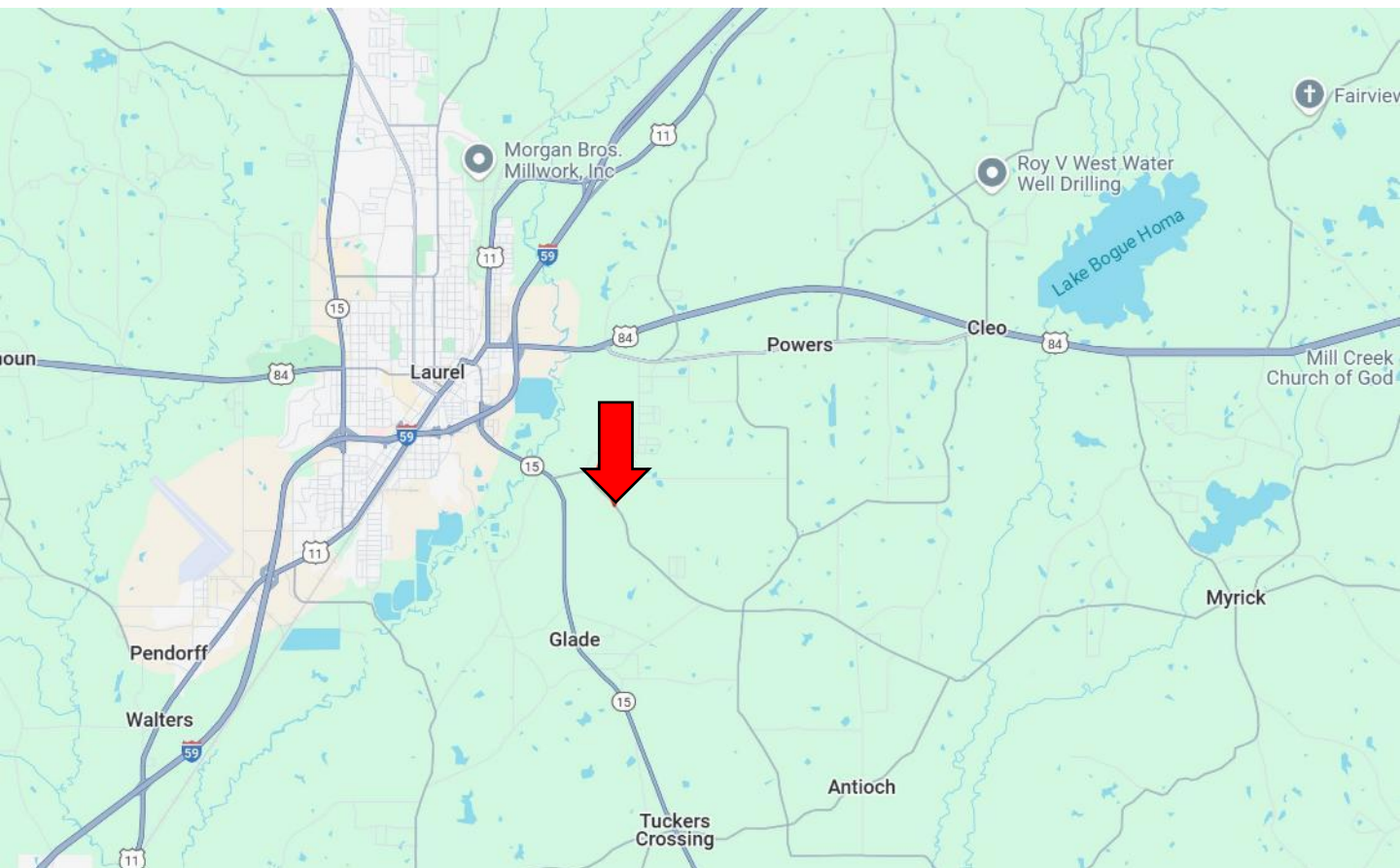
A Real Estate Expert You Can Trust

TomSmithLandandHomes.com

Information is believed to be accurate but not guaranteed.



Directional Map



Directions from I-59 and Hwy 15 in Laurel, MS: Take exit 96B for Hwy 15. Continue onto Hwy 15 and travel 0.8 miles. Turn left onto Free State Road/Lower Myrick Road. After 0.8 miles, the property will be on your right. [Google Map Link](#)



**WALKER
TRANUM**

REALTOR®

Office: 662.268.6333

Cell: 662.769.1442

Walker@TomSmithHomes.com



Expect More. Get More.

A Real Estate Expert You Can Trust

TomSmithLandandHomes.com

Information is believed to be accurate but not guaranteed.

