

8.4± Acre Homesite in Wayne County, MS



\$55,000

This 8.4± acre property in Wayne County, MS, offers a promising homesite location with available utilities and convenient gravel road frontage. The land is primarily covered with hardwoods and cedar, providing a natural and scenic setting. Deer signs were noted on the initial inspection, making it a good spot for hunting off your back porch. Ideally situated, the property is 16 miles east of Laurel, 14 miles west of Waynesboro, and 38 miles northeast of Hattiesburg, offering seclusion and accessibility to nearby towns. Give Kadero Edley a call to schedule your private viewing today!



**KADERO
EDLEY**

REALTOR®

Office: 601.898.2772

Cell: 601.488.7000

Kadero@TomSmithLand.com



Expect More. Get More.

A Real Estate Expert You Can Trust

TomSmithLandandHomes.com

Information is believed to be accurate but not guaranteed.





KADERO EDLEY

REALTOR®

Office: 601.898.2772

Cell: 601.488.7000

Kadero@TomSmithLand.com



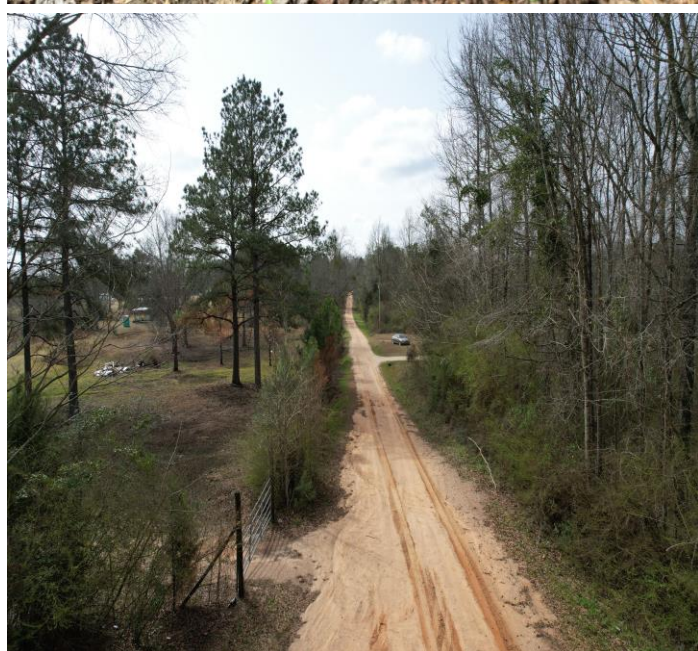
Expect More. Get More.

A Real Estate Expert You Can Trust

TomSmithLandandHomes.com

Information is believed to be accurate but not guaranteed.





KADERO EDLEY

REALTOR®

Office: 601.898.2772

Cell: 601.488.7000

Kadero@TomSmithLand.com



Expect More. Get More.

A Real Estate Expert You Can Trust

TomSmithLandandHomes.com

Information is believed to be accurate but not guaranteed.



AERIAL MAP



land **id.** [Click for Interactive Map](#)



**KADERO
EDLEY**

REALTOR®

Office: 601.898.2772

Cell: 601.488.7000

Kadero@TomSmithLand.com



Expect More. Get More.

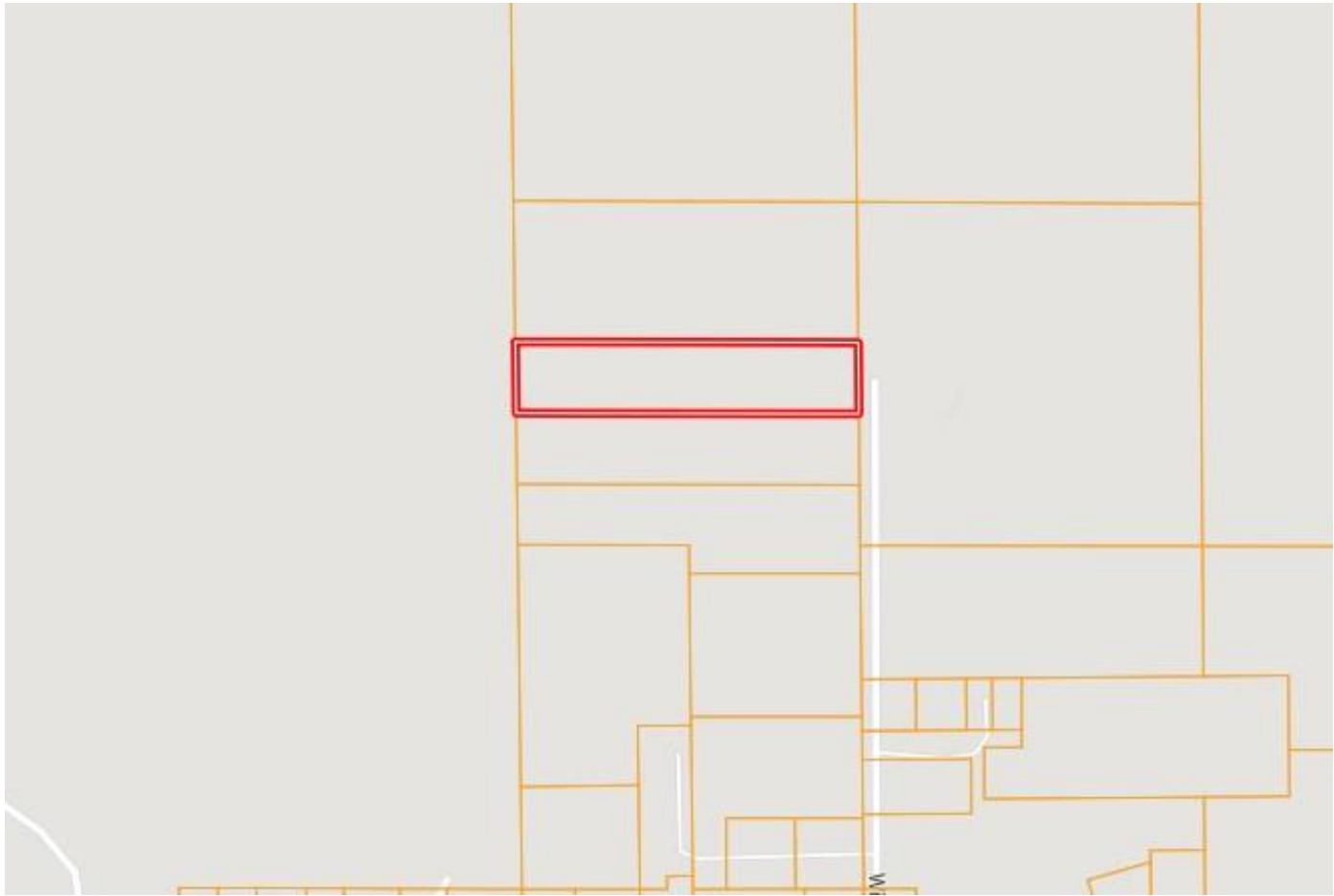
A Real Estate Expert You Can Trust

TomSmithLandandHomes.com

Information is believed to be accurate but not guaranteed.



OWNERSHIP MAP



**KADERO
EDLEY**

REALTOR®

Office: 601.898.2772

Cell: 601.488.7000

Kadero@TomSmithLand.com



Expect More. Get More.

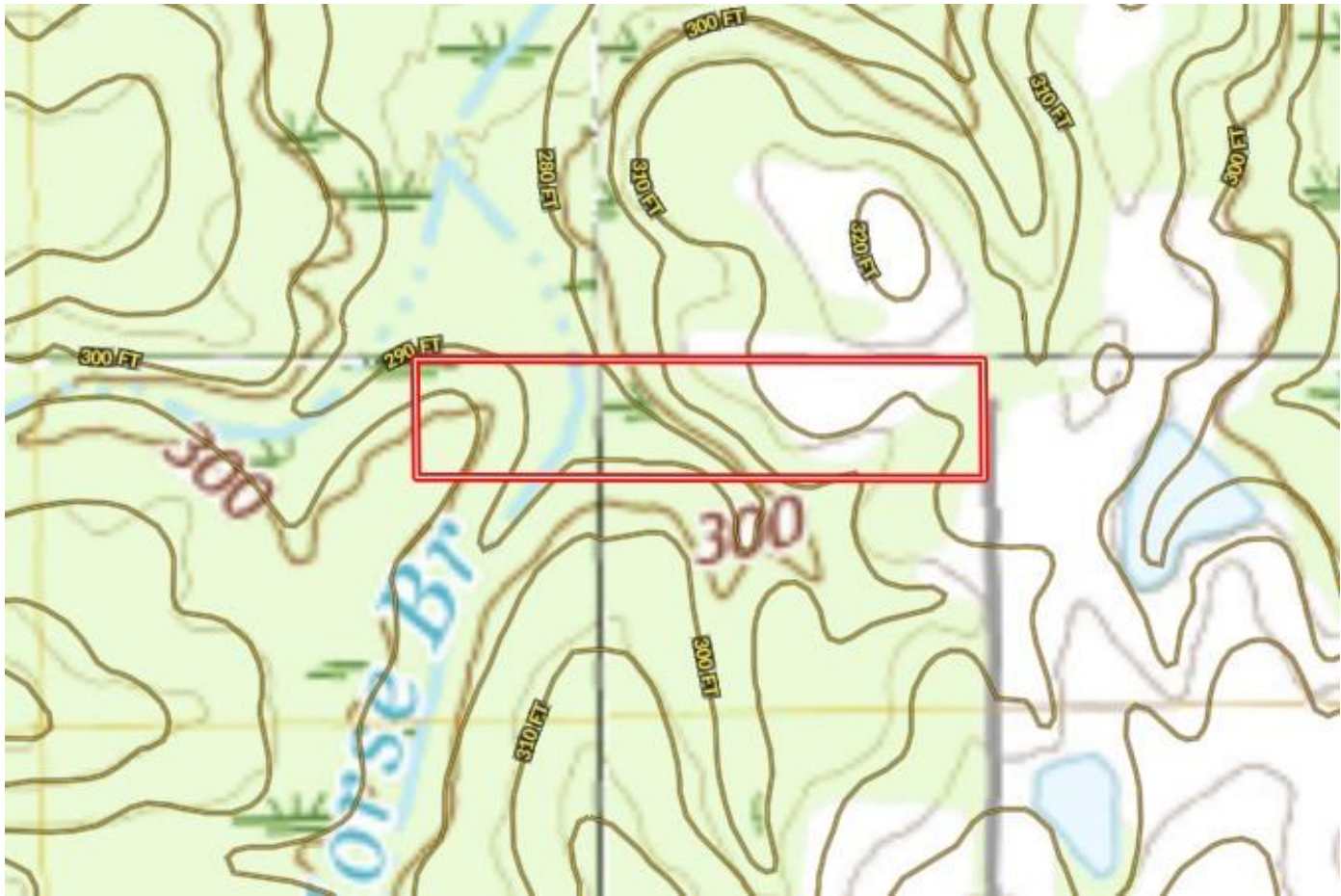
A Real Estate Expert You Can Trust

TomSmithLandandHomes.com

Information is believed to be accurate but not guaranteed.



TOPOGRAPHY MAP



**KADERO
EDLEY**

REALTOR®

Office: 601.898.2772

Cell: 601.488.7000

Kadero@TomSmithLand.com



Expect More. Get More.

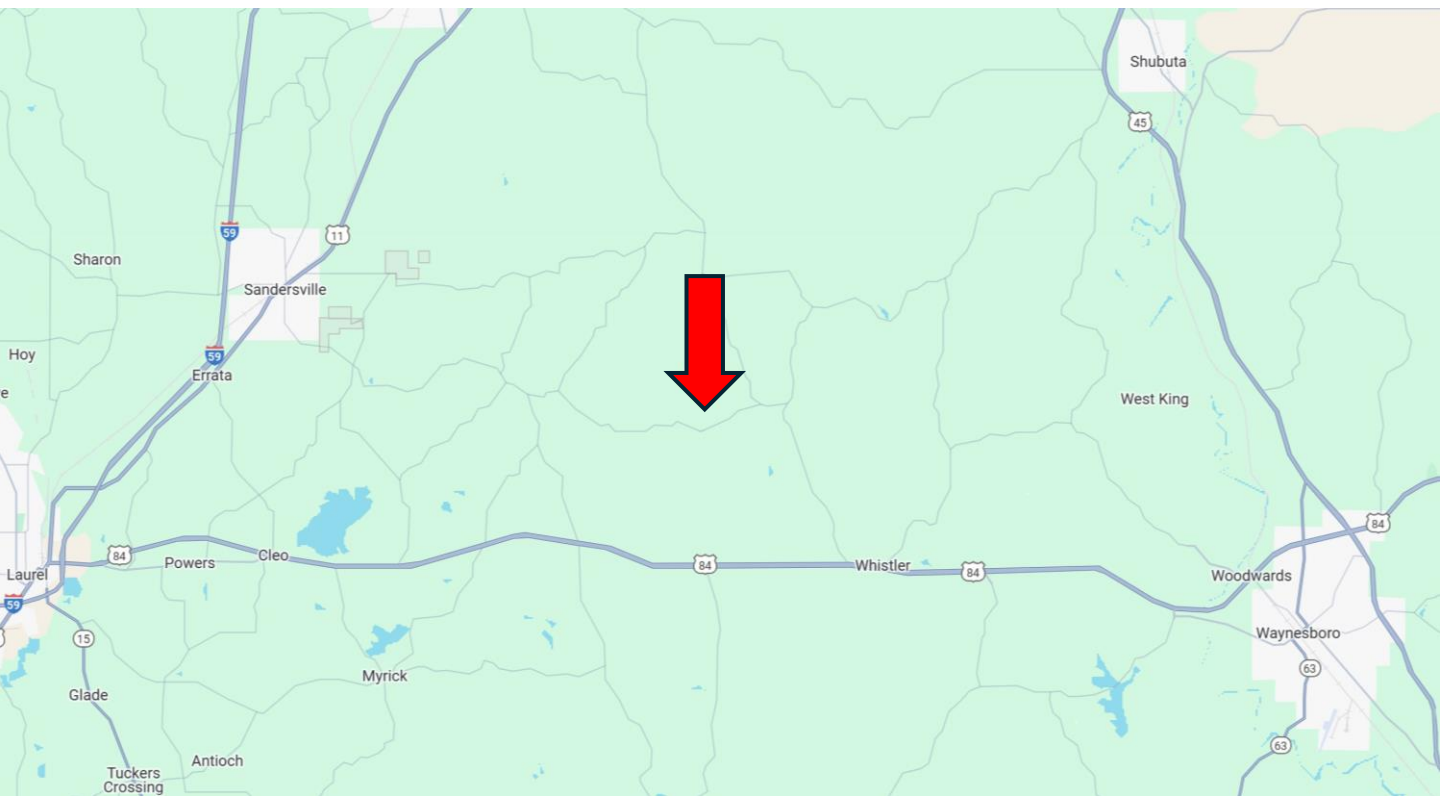
A Real Estate Expert You Can Trust

TomSmithLandandHomes.com

Information is believed to be accurate but not guaranteed.



DIRECTIONAL MAP



Directions from Hwy 45 and Hwy 84 W in Waynesboro, MS: Travel Hwy 84 W for 12.5 miles. Turn right onto Eucutta Rd and travel 4.1 miles. Turn left onto Pleasant Grove Altair Rd and travel 1.3 miles. Turn right onto Will Arrington Rd. After 0.5 miles, the property will be on the left.

[Google Maps Link](#)



**KADERO
EDLEY**

REALTOR®

Office: 601.898.2772

Cell: 601.488.7000

Kadero@TomSmithLand.com



Expect More. Get More.

A Real Estate Expert You Can Trust

TomSmithLandandHomes.com

Information is believed to be accurate but not guaranteed.

