

5.4± ACRE HOMESITE OKTIBBEHA COUNTY, MS



\$68,000

This 5.4+/- acre property in Oktibbeha County, MS, is a rare find. It is just a couple of minutes from Sturgis, 10 minutes from Starkville, and 10 minutes from Ackerman, MS! This property features over 580 feet of road frontage on Maben-Sturgis Road, and all utilities are available. This would make a good home site for someone looking to get out of the city. To schedule a private showing, call or text Walker today!



**WALKER
TRANUM**
REALTOR®

Office: 662.268.6333

Cell: 662.769.1442

Walker@TomSmithHomes.com



Expect More. Get More.

A Real Estate Expert You Can Trust

TomSmithLandandHomes.com

Information is believed to be accurate but not guaranteed.





A Real Estate Expert
You Can Trust!

WALKER TRANUM

REALTOR®

O: 662.268.6333 C: 662.769.1442

Walker@TomSmithHomes.com

TomSmithLandandHomes.com



Expect More. Get More.



Information is believed to be accurate but not guaranteed.

Aerial Map



Click [Here](#) for the Interactive Map Link

A Real Estate Expert
You Can Trust!

WALKER TRANUM

REALTOR®

O: 662.268.6333 C: 662.769.1442

Walker@TomSmithHomes.com

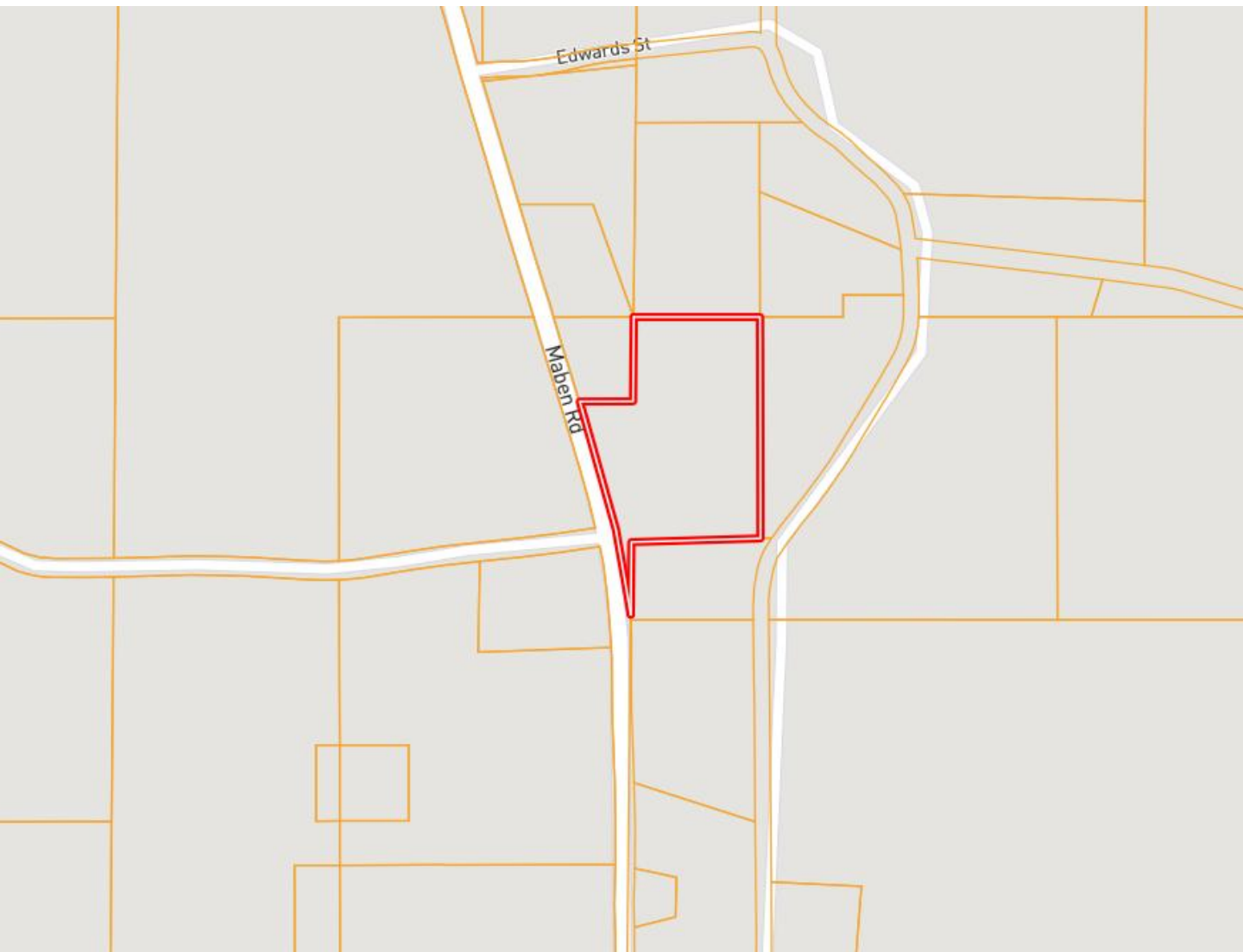
TomSmithLandandHomes.com



Expect More. Get More.



Ownership Map



A Real Estate Expert
You Can Trust!

WALKER TRANUM

REALTOR®

O: 662.268.6333 C: 662.769.1442

Walker@TomSmithHomes.com

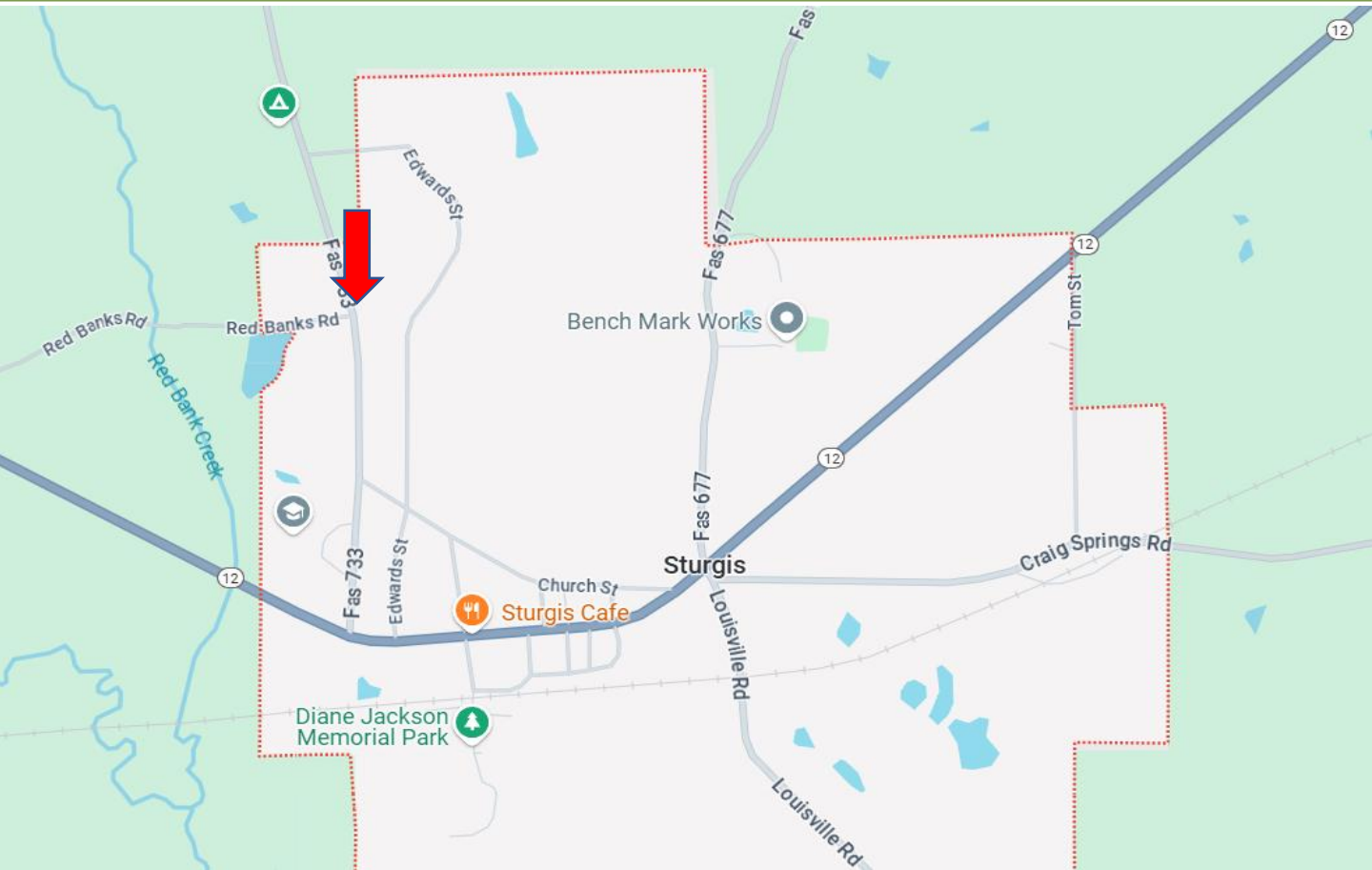
TomSmithLandandHomes.com



Expect More. Get More.



Directional Map



Directions from Sturgis, MS: Travel southwest on Hwy 12 towards Louisville Road. Turn right onto Maben Sturgis Road/Fas 733. After 0.5 miles, the property will be on your right.

[Google Map Link](#)



**WALKER
TRANUM**

REALTOR®

Office: 662.268.6333

Cell: 662.769.1442

Walker@TomSmithHomes.com



Expect More. Get More.

A Real Estate Expert You Can Trust

TomSmithLandandHomes.com

Information is believed to be accurate but not guaranteed.

