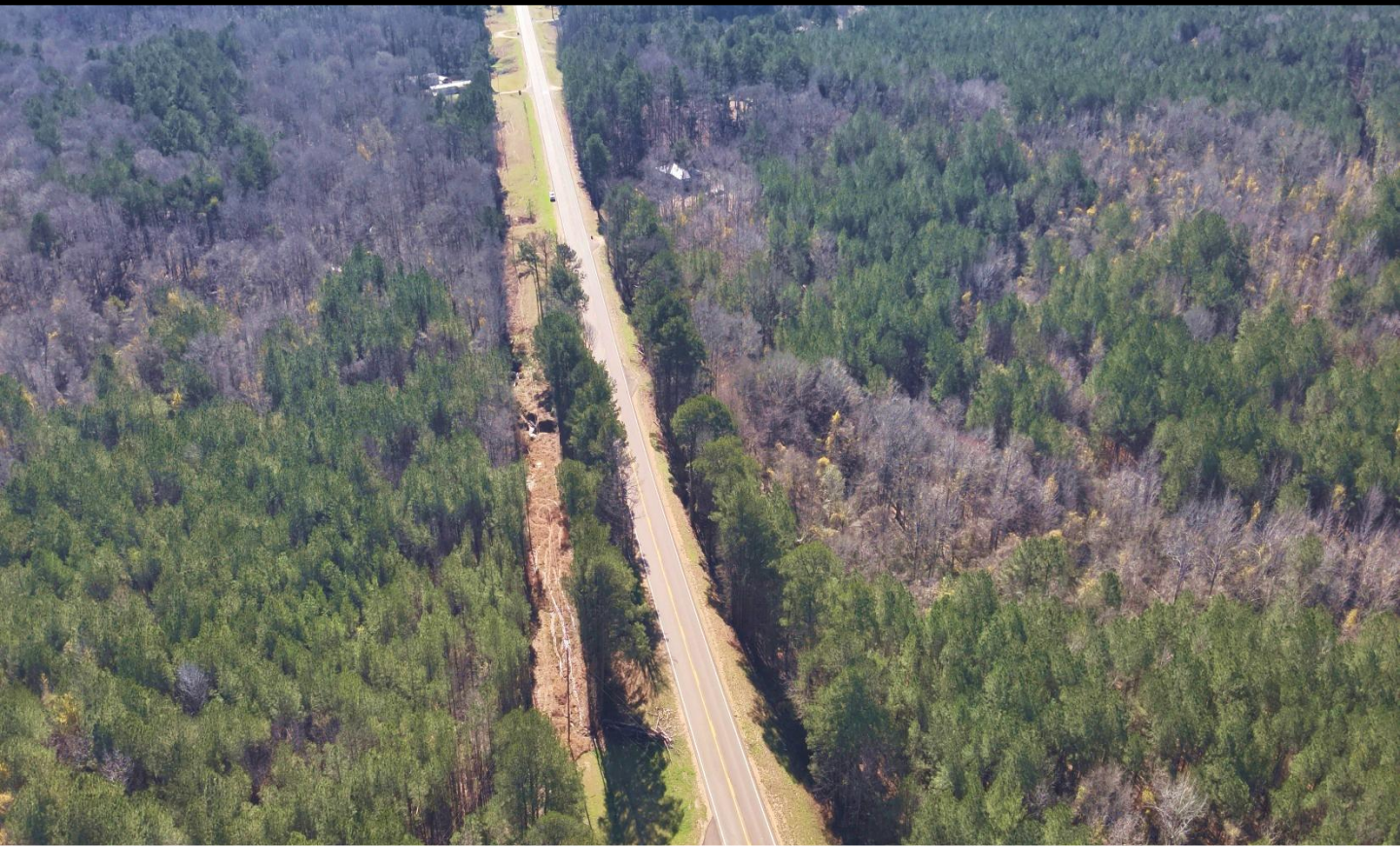


20.76± Acre Multi-Use Property in Copiah County, MS | \$68,000



This 20.76± acre property in Crystal Springs, Mississippi, offers the perfect blend of nature and potential. Tucked away in Copiah County, it's primarily wooded, making it an excellent spot for outdoor activities, hunting, or just enjoying some peace and quiet. With road frontage along MS Highway 27, you get easy access while still having a private, serene setting. The land consists of 32 acres, split into two parcels—one 20.76 acres and another 10.62 acres—and the seller is open to selling them separately or together, depending on what works best for you. Whether you are looking for a place to build your dream home or a private recreational retreat, this property has endless possibilities.

**ELLEN
SMITH**

MANAGING BROKER

Office: 601.898.2772

Cell: 601.954.9395

Ellen@TomSmithHomes.com



Expect More. Get More.

A Real Estate Expert You Can Trust

TomSmithLandandHomes.com

Information is believed to be accurate but not guaranteed.





A Real Estate Expert
You Can Trust!

ELLEN SMITH

MANAGING BROKER

O: 601.898.2772 C: 601.954.9395

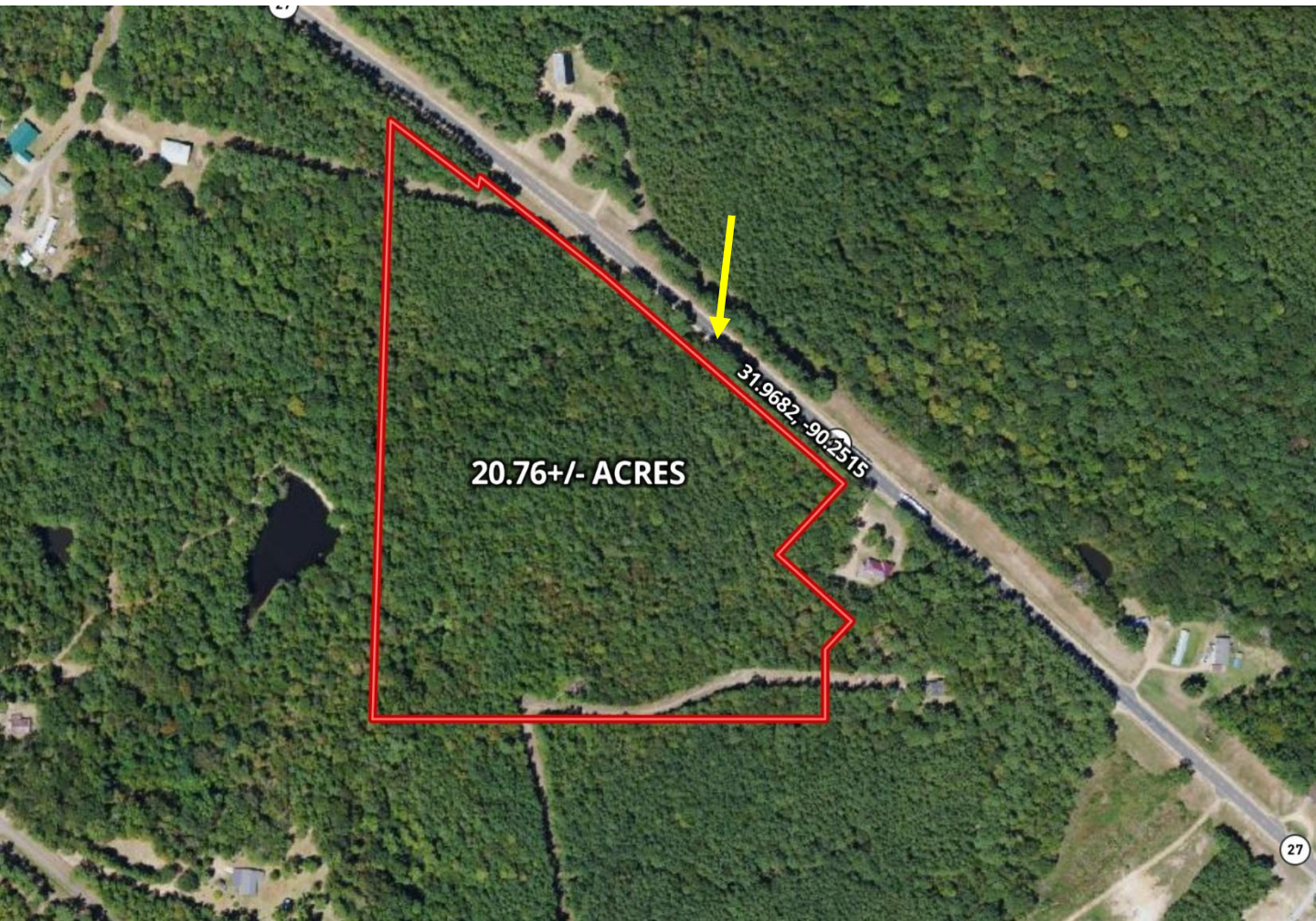
Ellen@TomSmithHomes.com

TomSmithLandandHomes.com



Information is believed to be accurate but not guaranteed.

Aerial Map



[Click Here for the Landid Interactive Map Link](#)

A Real Estate Expert
You Can Trust!

ELLEN SMITH

MANAGING BROKER

O: 601.898.2772 C: 601.954.9395

Ellen@TomSmithHomes.com

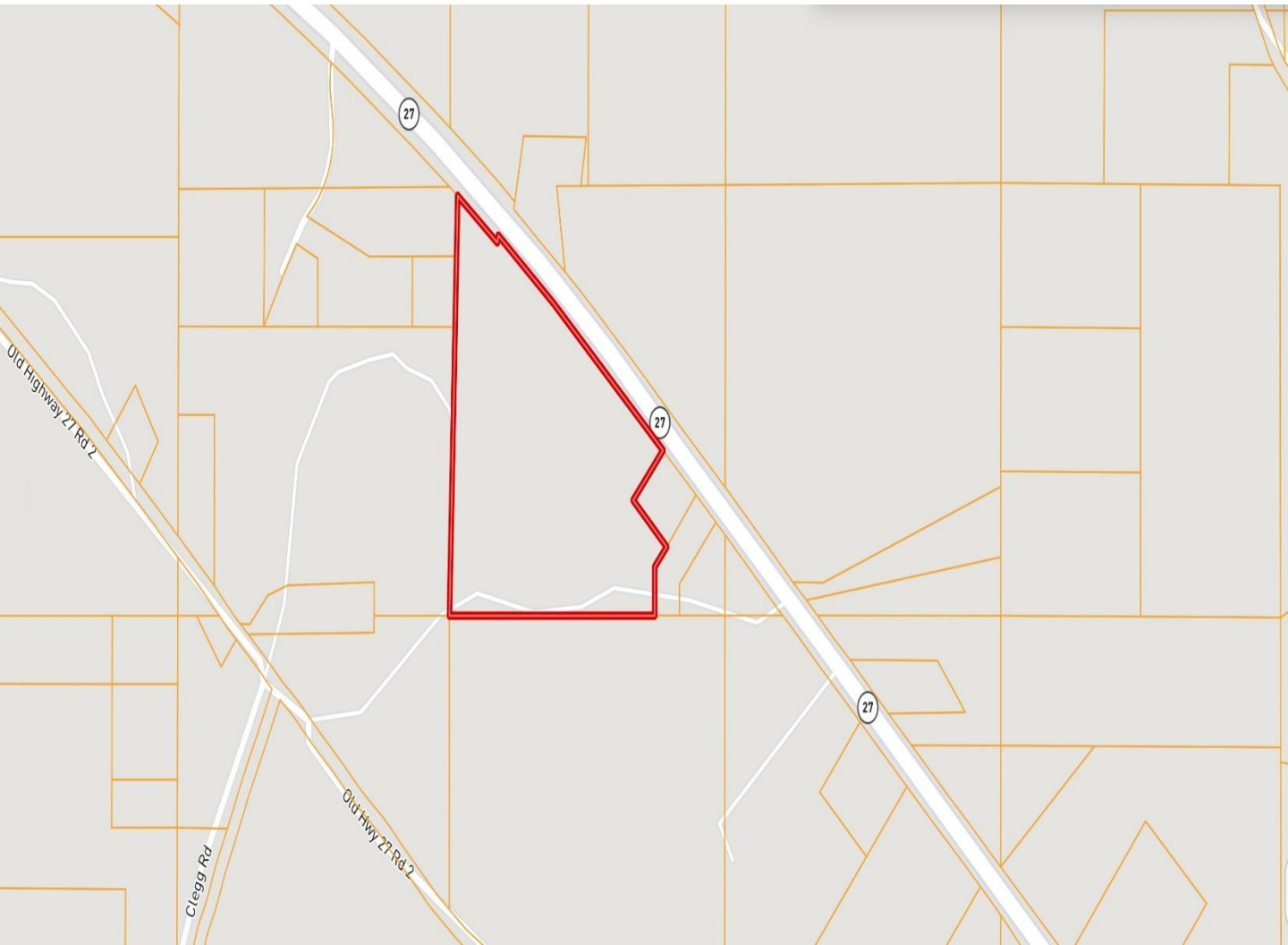
TomSmithLandandHomes.com



Information is believed to be accurate but not guaranteed.



Ownership Map



A Real Estate Expert
You Can Trust!

ELLEN SMITH

MANAGING BROKER

O: 601.898.2772 C: 601.954.9395

Ellen@TomSmithHomes.com

TomSmithLandandHomes.com



Information is believed to be accurate but not guaranteed.



Topo Map



A Real Estate Expert
You Can Trust!

ELLEN SMITH

MANAGING BROKER

O: 601.898.2772 C: 601.954.9395

Ellen@TomSmithHomes.com

TomSmithLandandHomes.com



Information is believed to be accurate but not guaranteed.



Soil Map



SOIL CODE	SOIL DESCRIPTION	ACRES	%	CPI	NCCPI	CAP
SmE	Smithdale sandy loam, 12 to 17 percent slopes	7.76	37.38	0	51	6e
PrB2	Providence silt loam, 2 to 5 percent slopes, eroded	4.81	23.17	0	28	2e
Gb	Gillsburg silt loam	4.31	20.76	0	50	2w
LrE	Lorman fine sandy loam, 12 to 35 percent slopes	3.61	17.39	0	26	7e
KoC2	Kolin silt loam, 5 to 8 percent slopes, eroded	0.27	1.3	0	57	4e
TOTALS		20.76(*)	100%	-	41.19	4.39

A Real Estate Expert
You Can Trust!

ELLEN SMITH

MANAGING BROKER

O: 601.898.2772 C: 601.954.9395

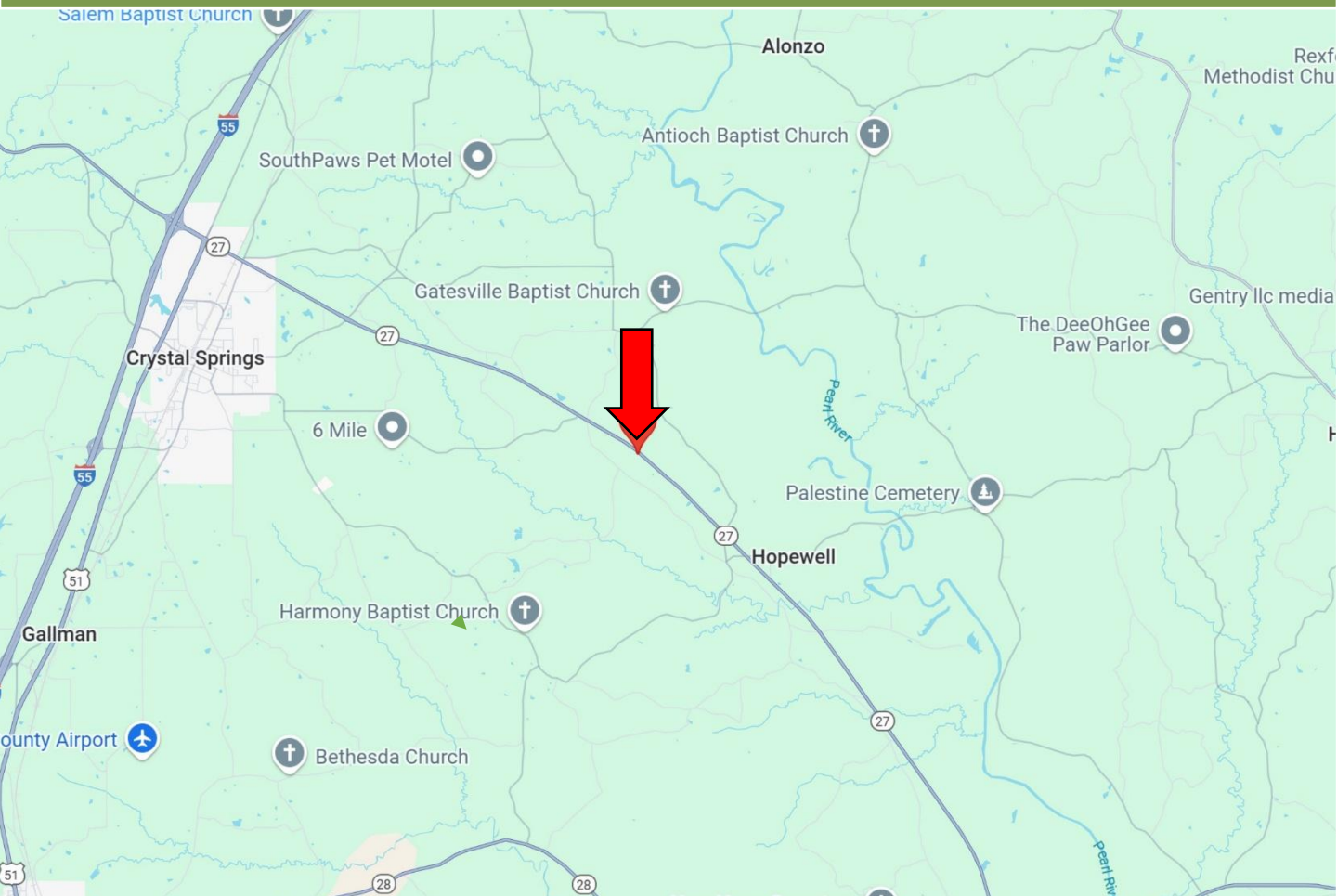
Ellen@TomSmithHomes.com

TomSmithLandandHomes.com



Information is believed to be accurate but not guaranteed.

Directional Map



Directions from I-55 in Crystal Springs, MS: Take exit 72 for US-51N/MSW-27 S towards Crystal Springs/Utica. Travel MS-27 S. for 2.9 miles. At the traffic circle, take the 2nd exit to continue onto MS-27. After 4.5 miles, the property will be on the right.
[GOOGLE MAP LINK](#)

**ELLEN
SMITH**

MANAGING BROKER

Office: 601.898.2772

Cell: 601.954.9395

Ellen@TomSmithHomes.com



Expect More. Get More.

A Real Estate Expert You Can Trust

TomSmithLandandHomes.com

Information is believed to be accurate but not guaranteed.

