

# Spacious 4-Bedroom, 3-Bathroom Home in Cleveland

## 100 Ashley Street, Cleveland, MS 38732



**\$215,000**



**100 Ashley Street** in Cleveland, Bolivar County, MS, is a 4-bedroom, 3-bathroom home, which is a rarity for this location! The two living areas offer plenty of space for friends and family to gather, or you can step outside to the concrete patio for outdoor entertaining. The galley kitchen has many recent updates, including a stainless-steel refrigerator. The home features beautiful hardwood floors, updated LVP, and carpet. Built-in cabinets and shelves around the gas fireplace make the spacious room cozy. Two of the three bathrooms feature walk-in showers, while the other has a shower-tub combo. For more details and to schedule your private showing, call Tracey!



**TRACEY  
BELL**

MANAGING BROKER

Office: 662.441.2500

Cell: 662.719.4720

Tracey@TomSmithLand.com



Expect More. Get More.

## A Real Estate Expert You Can Trust

TomSmithLandandHomes.com

Information is believed to be accurate but not guaranteed.







**A Real Estate Expert**  
*You Can Trust!*

**TRACEY BELL**

MANAGING BROKER

O: 662.441.2500 C: 662.719.4720

Tracey@TomSmithLand.com

TomSmithLandandHomes.com

**Tom  
Smith  
LAND AND  
HOMES**  
Expect More. Get More.

2011-2024  
**BEST**  
BROKERAGES

Information is believed to be accurate but not guaranteed.





Two of the four bedrooms feature en-suite bathrooms with walk-in showers.



**A Real Estate Expert**  
*You Can Trust!*

**TRACEY BELL**

MANAGING BROKER

O: 662.441.2500 C: 662.719.4720

Tracey@TomSmithLand.com

TomSmithLandandHomes.com

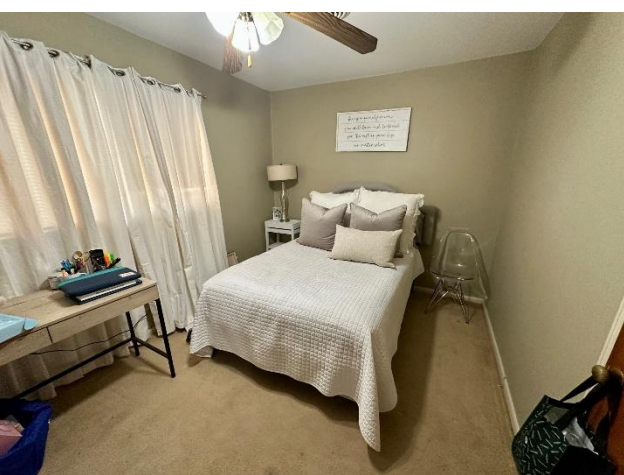
**Tom  
Smith  
LAND AND  
HOMES**

Expect More. Get More.

2011-2024  
**BEST**  
BROKERAGES

Information is believed to be accurate but not guaranteed.





**A Real Estate Expert**  
*You Can Trust!*

**TRACEY BELL**

MANAGING BROKER

O: 662.441.2500 C: 662.719.4720

Tracey@TomSmithLand.com

TomSmithLandandHomes.com

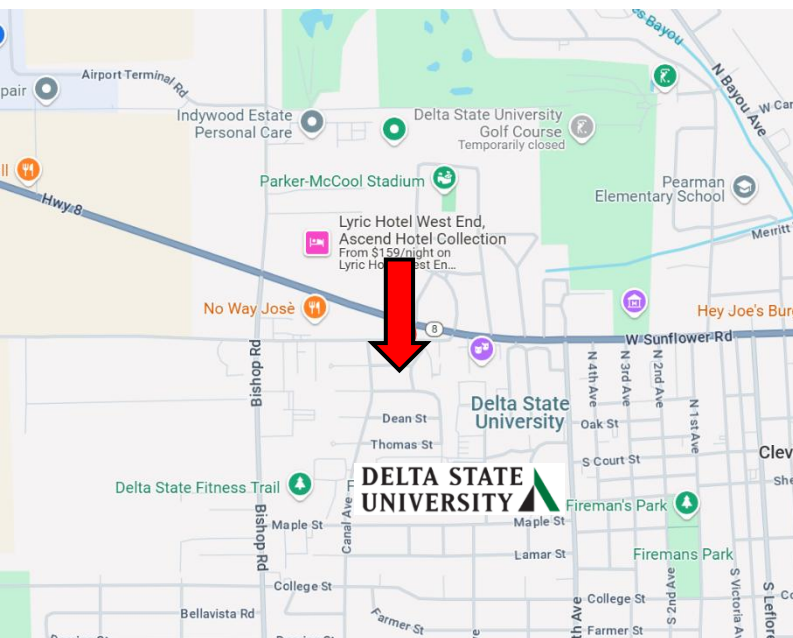
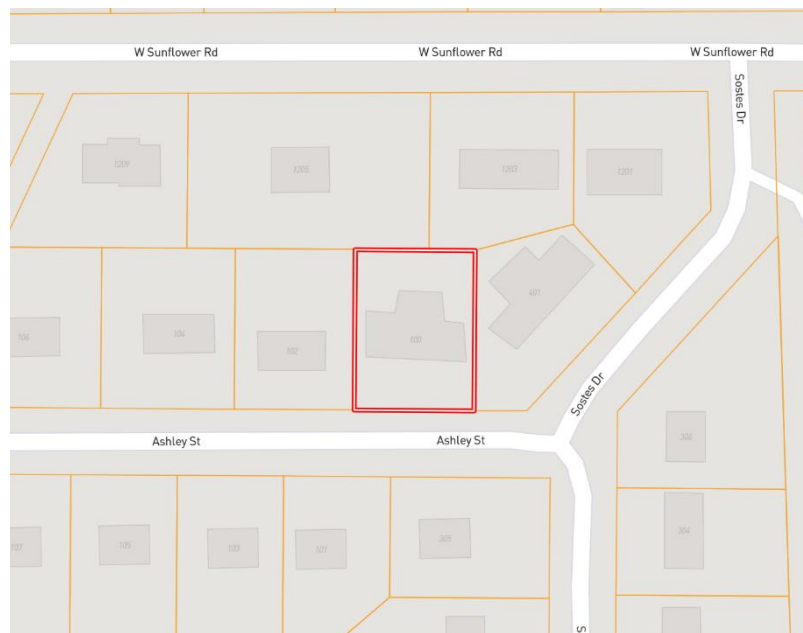
**Tom  
Smith  
LAND AND  
HOMES**

Expect More. Get More.

2011-2024  
**BEST**  
BROKERAGES

Information is believed to be accurate but not guaranteed.





**Directions from Hwy 8 & Hwy 61 in Cleveland, MS:** Travel west on HWY 8 for 1.3 miles. Turn left onto W. Sunflower Road and travel 417 feet. Turn left on Sostes Drive and travel 344 feet before turning right on Ashley Street. After 115 feet, the home will be on the right.

### **Address:**

100 Ashley Street, Cleveland, MS 38732

[Google Maps Link](#)



**TRACEY  
BELL**

MANAGING BROKER

Office: 662.441.2500

Cell: 662.719.4720

[Tracey@TomSmithLand.com](mailto:Tracey@TomSmithLand.com)



Expect More. Get More.

**A Real Estate Expert You Can Trust**

[TomSmithLandandHomes.com](http://TomSmithLandandHomes.com)

Information is believed to be accurate but not guaranteed.

