

3 Bedroom, 3.5 Bathroom - Townhome 391 Kirk Cauldy Drive, Starkville, MS \$195,500



If you're searching for a townhome in Starkville, Oktibbeha County, MS, whether for personal use or to enhance your investment portfolio, this is an opportunity you do not want to miss. Located just 3.9 miles from The Mississippi State University Football Stadium, this 3-bedroom, 3.5-bathroom townhome features a spacious open-concept living area. With ample parking in the gated community, this townhome offers you and your guests excellent amenities. For more details about this opportunity, contact Tracey today! *Agent Owned



TRACEY BELL
MANAGING BROKER

O: 662.441.2500 | C: 662.719.4720
Tracey@TomSmithLand.com



Expect More. Get More.



LELAND SELBY
REALTOR®

O: 662.268.6333 | C: 662.394.9876
Leland@TomSmithLand.com

TomSmithLandandHomes.com

Information is believed to be accurate but not guaranteed.





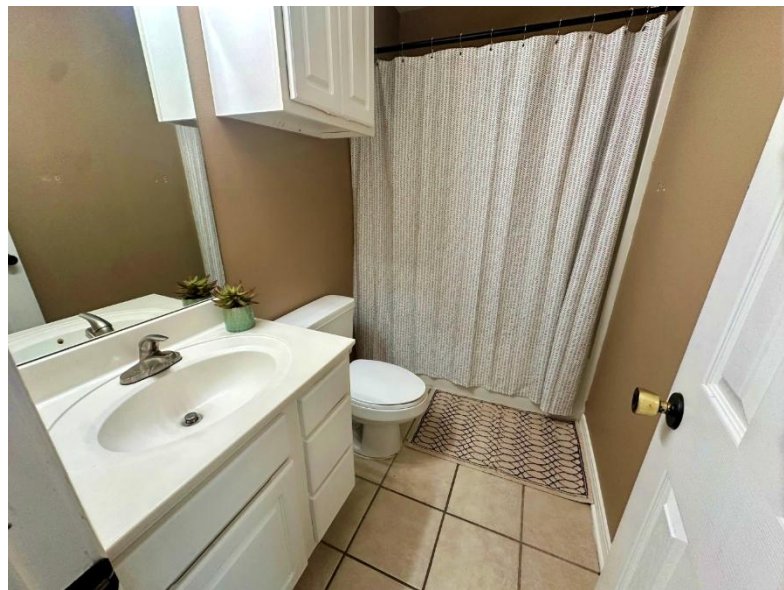
- Open-Concept Kitchen & Living Area
- 3 Bedrooms & 3 Bathrooms Upstairs
- Half Bathroom Downstairs
- Large Kitchen Bar
- Walk-In Pantry
- Laundry Room Downstairs
- New Roof
- New Carpet
- Fresh Paint
- New Dishwasher
- New Front Door
- New Ceiling Fans



TRACEY BELL
 MANAGING BROKER
 O: 662.441.2500 | C: 662.719.4720
 Tracey@TomSmithLand.com



LELAND SELBY
 REALTOR®
 O: 662.268.6333 | C: 662.394.9876
 Leland@TomSmithLand.com



TRACEY BELL
MANAGING BROKER

O: 662.441.2500 | C: 662.719.4720
Tracey@TomSmithLand.com

LELAND SELBY
REALTOR®

O: 662.268.6333 | C: 662.394.9876
Leland@TomSmithLand.com

TomSmithLandandHomes.com

Information is believed to be accurate but not guaranteed.

2011-2024
BEST
BROKERAGES



TRACEY BELL
MANAGING BROKER

O: 662.441.2500 | C: 662.719.4720
Tracey@TomSmithLand.com



LELAND SELBY
REALTOR®

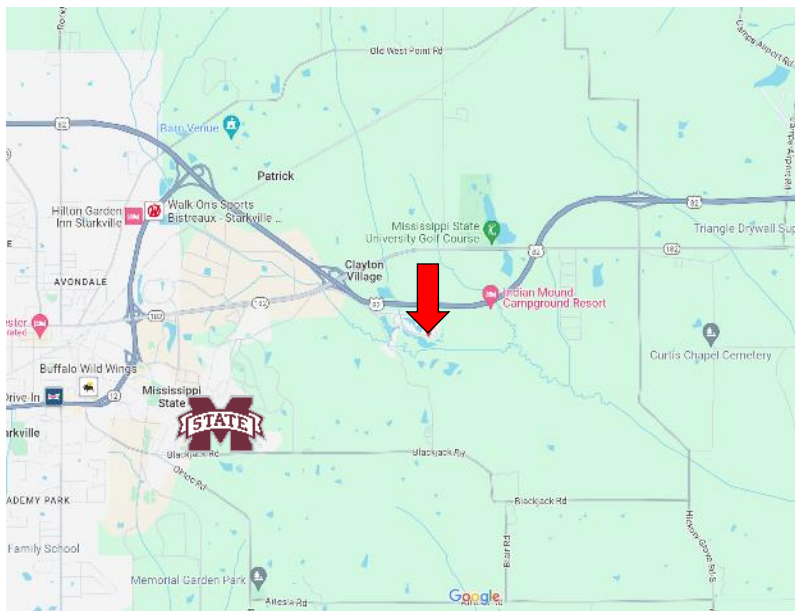
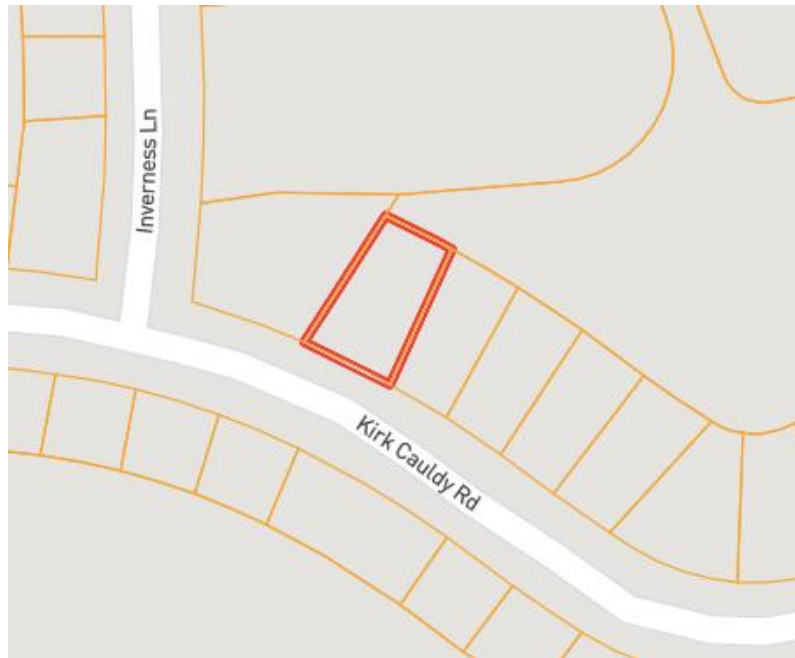
O: 662.268.6333 | C: 662.394.9876
Leland@TomSmithLand.com

TomSmithLandandHomes.com

Information is believed to be accurate but not guaranteed.

Entrepreneur
2011-2024
BEST
BROKERAGES

MAPS | [Click Here For an Interactive Map](#)



Address: 391 Kirk Caudy Drive,
Starkville, MS 39759

**Directions from Hwy 182 and Hwy 82
East of Starkville, MS:**

Take the MS-182 exit toward Clayton Village. Turn left onto Mayhew Rd., and then take an immediate left onto St. Andrews Lane. Travel 1 mile, then turn right onto Links Lane. After half a mile, the property will be on your left.

[Click for Google Maps](#)



TRACEY BELL
MANAGING BROKER

O: 662.441.2500 | C: 662.719.4720
Tracey@TomSmithLand.com



Expect More. Get More.



LELAND SELBY
REALTOR®

O: 662.268.6333 | C: 662.394.9876
Leland@TomSmithLand.com