

3 Bedroom, 3.5 Bathroom - Townhome 391 Kirk Cauldy Drive, Starkville, MS \$195,500



If you're searching for a townhome in Starkville, Oktibbeha County, MS, whether for personal use or to enhance your investment portfolio, this is an opportunity you do not want to miss. Located just 3.9 miles from The Mississippi State University Football Stadium, this 3-bedroom, 3.5-bathroom townhome features a spacious open-concept living area. With ample parking in the gated community, this townhome offers you and your guests excellent amenities. For more details about this opportunity, contact Tracey today! *Agent Owned



**TRACEY
BELL**

MANAGING BROKER

Office: 662.441.2500

Cell: 662.719.4720

Tracey@TomSmithLand.com



Expect More. Get More.

A Real Estate Expert You Can Trust

TomSmithLandandHomes.com

Information is believed to be accurate but not guaranteed.

LandReport
2011-2023
AMERICA'S
BEST
BROKERAGES



- Open-Concept Kitchen & Living Area
- 3 Bedrooms & 3 Bathrooms Upstairs
- Half Bathroom Downstairs
- Large Kitchen Bar
- Walk-In Pantry
- Laundry Room Downstairs
- New Roof
- New Carpet
- Fresh Paint
- New Dishwasher
- New Front Door
- New Ceiling Fans

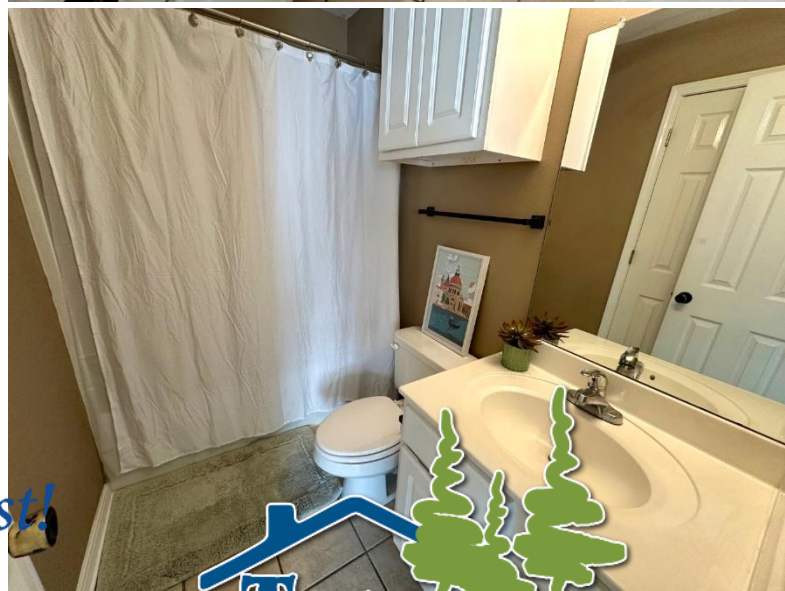


A Real Estate Expert
You Can Trust!

TRACEY BELL
MANAGING BROKER
O: 662.441.2500 C: 662.719.4720
Tracey@TomSmithLand.com
TomSmithLandandHomes.com

Tom Smith
LAND AND HOMES
Expect More. Get More.





*A Real Estate Expert
You Can Trust!*

TRACEY BELL

MANAGING BROKER

O: 662.441.2500 C: 662.719.4720

Tracey@TomSmithLand.com

TomSmithLandandHomes.com

**Tom
Smith
LAND AND
HOMES**

Expect More. Get More.



Information is believed to be accurate but not guaranteed.



**A Real Estate Expert
You Can Trust!**

TRACEY BELL

MANAGING BROKER

O: 662.441.2500 C: 662.719.4720

Tracey@TomSmithLand.com

TomSmithLandandHomes.com

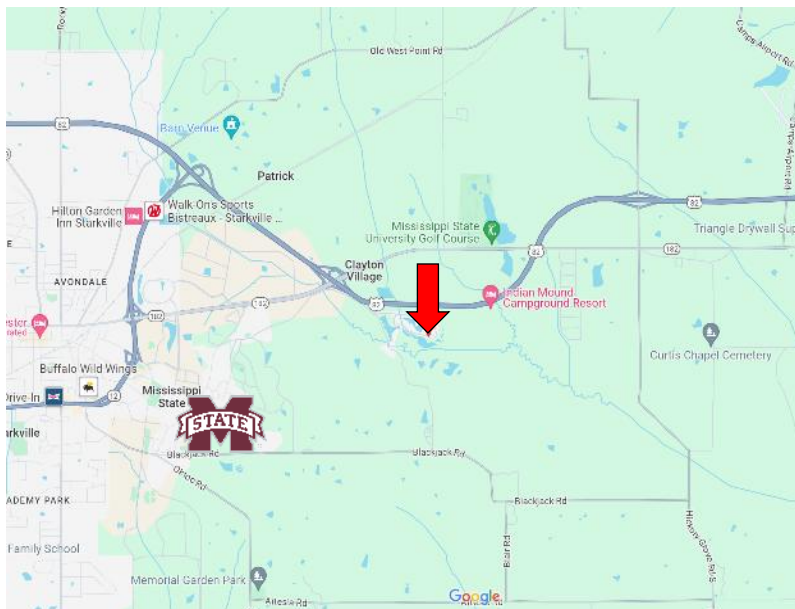
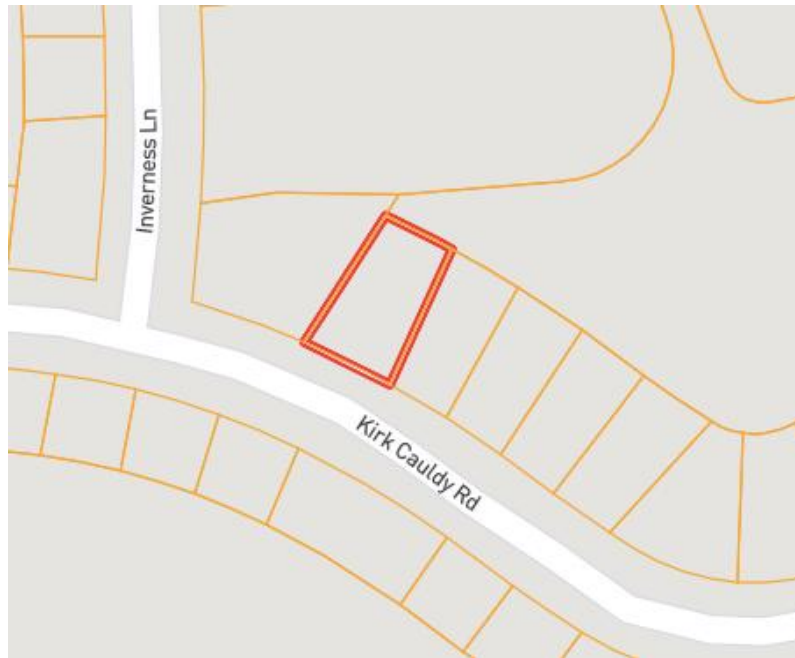
**Tom
Smith
LAND AND
HOMES**

Expect More. Get More.

LandReport
2011-2024
BEST
BROKERAGES

Information is believed to be accurate but not guaranteed.

MAPS | [Click Here For an Interactive Map](#)



Address: 391 Kirk Caudy Drive,
Starkville, MS 39759

**Directions from Hwy 182 and Hwy 82
East of Starkville, MS:**

Take the MS-182 exit toward Clayton Village. Turn left onto Mayhew Rd., and then take an immediate left onto St. Andrews Lane. Travel 1 mile, then turn right onto Links Lane. After half a mile, the property will be on your left.

[Click for Google Maps](#)



**TRACEY
BELL**

MANAGING BROKER

Office: 662.441.2500

Cell: 662.719.4720

Tracey@TomSmithLand.com



Expect More. Get More.

A Real Estate Expert You Can Trust

TomSmithLandandHomes.com

Information is believed to be accurate but not guaranteed.

